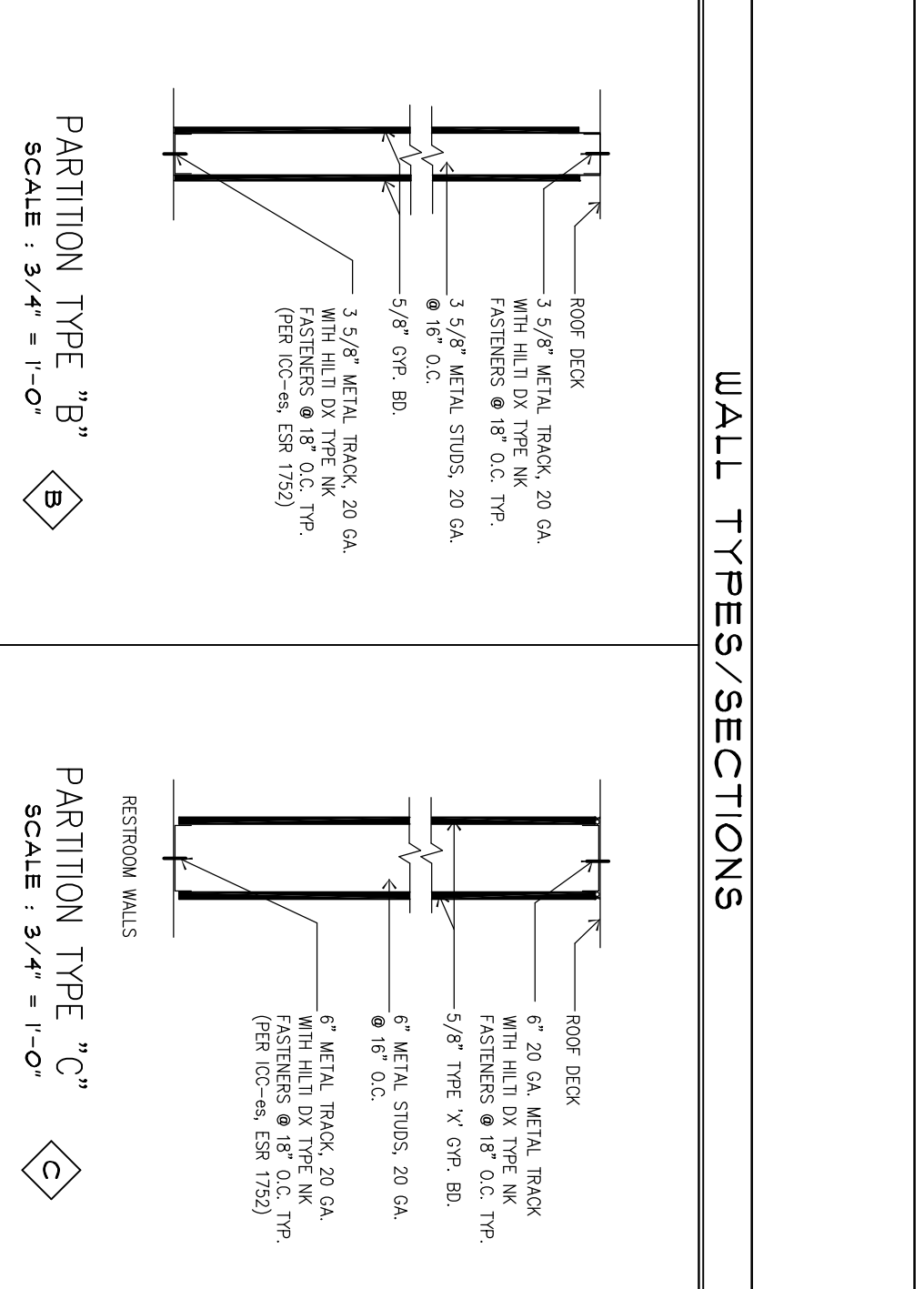


**SECURITY/SURVEILLANCE REQUIREMENTS**

- R 333.235 SECURITY MEASURES; REQUIRED PLAN; VIDEO SURVEILLANCE SYSTEM;
  - (1) THE APPLICANT FOR A LICENSE TO OPERATE A LICENSED FACILITY SHALL ENSURE THAT THE PERSON AT THE LICENSED FACILITY IS TRAINED IN THE REQUIREMENTS OF THIS RULE.
  - (2) A LICENSEE SHALL ENSURE THAT ANY PERSON AT THE LICENSED FACILITY IS TRAINED IN THE REQUIREMENTS OF THIS RULE.
  - (3) A LICENSEE SHALL ENSURE THAT ANY PERSON AT THE LICENSED FACILITY IS TRAINED IN THE REQUIREMENTS OF THIS RULE.
  - (4) A LICENSEE SHALL ENSURE THAT ANY PERSON AT THE LICENSED FACILITY IS TRAINED IN THE REQUIREMENTS OF THIS RULE.
  - (5) A LICENSEE SHALL ENSURE THAT ANY PERSON AT THE LICENSED FACILITY IS TRAINED IN THE REQUIREMENTS OF THIS RULE.
  - (6) A LICENSEE SHALL ENSURE THAT ANY PERSON AT THE LICENSED FACILITY IS TRAINED IN THE REQUIREMENTS OF THIS RULE.
  - (7) A LICENSEE SHALL ENSURE THAT ANY PERSON AT THE LICENSED FACILITY IS TRAINED IN THE REQUIREMENTS OF THIS RULE.
  - (8) A LICENSEE SHALL ENSURE THAT ANY PERSON AT THE LICENSED FACILITY IS TRAINED IN THE REQUIREMENTS OF THIS RULE.
  - (9) A LICENSEE SHALL ENSURE THAT ANY PERSON AT THE LICENSED FACILITY IS TRAINED IN THE REQUIREMENTS OF THIS RULE.
  - (10) A LICENSEE SHALL ENSURE THAT ANY PERSON AT THE LICENSED FACILITY IS TRAINED IN THE REQUIREMENTS OF THIS RULE.
  - (11) A LICENSEE SHALL ENSURE THAT ANY PERSON AT THE LICENSED FACILITY IS TRAINED IN THE REQUIREMENTS OF THIS RULE.
  - (12) A LICENSEE SHALL ENSURE THAT ANY PERSON AT THE LICENSED FACILITY IS TRAINED IN THE REQUIREMENTS OF THIS RULE.
  - (13) A LICENSEE SHALL ENSURE THAT ANY PERSON AT THE LICENSED FACILITY IS TRAINED IN THE REQUIREMENTS OF THIS RULE.
  - (14) A LICENSEE SHALL ENSURE THAT ANY PERSON AT THE LICENSED FACILITY IS TRAINED IN THE REQUIREMENTS OF THIS RULE.
  - (15) A LICENSEE SHALL ENSURE THAT ANY PERSON AT THE LICENSED FACILITY IS TRAINED IN THE REQUIREMENTS OF THIS RULE.
  - (16) A LICENSEE SHALL ENSURE THAT ANY PERSON AT THE LICENSED FACILITY IS TRAINED IN THE REQUIREMENTS OF THIS RULE.
  - (17) A LICENSEE SHALL ENSURE THAT ANY PERSON AT THE LICENSED FACILITY IS TRAINED IN THE REQUIREMENTS OF THIS RULE.
  - (18) A LICENSEE SHALL ENSURE THAT ANY PERSON AT THE LICENSED FACILITY IS TRAINED IN THE REQUIREMENTS OF THIS RULE.
  - (19) A LICENSEE SHALL ENSURE THAT ANY PERSON AT THE LICENSED FACILITY IS TRAINED IN THE REQUIREMENTS OF THIS RULE.
  - (20) A LICENSEE SHALL ENSURE THAT ANY PERSON AT THE LICENSED FACILITY IS TRAINED IN THE REQUIREMENTS OF THIS RULE.
  - (21) A LICENSEE SHALL ENSURE THAT ANY PERSON AT THE LICENSED FACILITY IS TRAINED IN THE REQUIREMENTS OF THIS RULE.
  - (22) A LICENSEE SHALL ENSURE THAT ANY PERSON AT THE LICENSED FACILITY IS TRAINED IN THE REQUIREMENTS OF THIS RULE.
  - (23) A LICENSEE SHALL ENSURE THAT ANY PERSON AT THE LICENSED FACILITY IS TRAINED IN THE REQUIREMENTS OF THIS RULE.
  - (24) A LICENSEE SHALL ENSURE THAT ANY PERSON AT THE LICENSED FACILITY IS TRAINED IN THE REQUIREMENTS OF THIS RULE.
  - (25) A LICENSEE SHALL ENSURE THAT ANY PERSON AT THE LICENSED FACILITY IS TRAINED IN THE REQUIREMENTS OF THIS RULE.
  - (26) A LICENSEE SHALL ENSURE THAT ANY PERSON AT THE LICENSED FACILITY IS TRAINED IN THE REQUIREMENTS OF THIS RULE.
  - (27) A LICENSEE SHALL ENSURE THAT ANY PERSON AT THE LICENSED FACILITY IS TRAINED IN THE REQUIREMENTS OF THIS RULE.
  - (28) A LICENSEE SHALL ENSURE THAT ANY PERSON AT THE LICENSED FACILITY IS TRAINED IN THE REQUIREMENTS OF THIS RULE.
  - (29) A LICENSEE SHALL ENSURE THAT ANY PERSON AT THE LICENSED FACILITY IS TRAINED IN THE REQUIREMENTS OF THIS RULE.
  - (30) A LICENSEE SHALL ENSURE THAT ANY PERSON AT THE LICENSED FACILITY IS TRAINED IN THE REQUIREMENTS OF THIS RULE.
  - (31) A LICENSEE SHALL ENSURE THAT ANY PERSON AT THE LICENSED FACILITY IS TRAINED IN THE REQUIREMENTS OF THIS RULE.
  - (32) A LICENSEE SHALL ENSURE THAT ANY PERSON AT THE LICENSED FACILITY IS TRAINED IN THE REQUIREMENTS OF THIS RULE.
  - (33) A LICENSEE SHALL ENSURE THAT ANY PERSON AT THE LICENSED FACILITY IS TRAINED IN THE REQUIREMENTS OF THIS RULE.
  - (34) A LICENSEE SHALL ENSURE THAT ANY PERSON AT THE LICENSED FACILITY IS TRAINED IN THE REQUIREMENTS OF THIS RULE.
  - (35) A LICENSEE SHALL ENSURE THAT ANY PERSON AT THE LICENSED FACILITY IS TRAINED IN THE REQUIREMENTS OF THIS RULE.
  - (36) A LICENSEE SHALL ENSURE THAT ANY PERSON AT THE LICENSED FACILITY IS TRAINED IN THE REQUIREMENTS OF THIS RULE.
  - (37) A LICENSEE SHALL ENSURE THAT ANY PERSON AT THE LICENSED FACILITY IS TRAINED IN THE REQUIREMENTS OF THIS RULE.
  - (38) A LICENSEE SHALL ENSURE THAT ANY PERSON AT THE LICENSED FACILITY IS TRAINED IN THE REQUIREMENTS OF THIS RULE.
  - (39) A LICENSEE SHALL ENSURE THAT ANY PERSON AT THE LICENSED FACILITY IS TRAINED IN THE REQUIREMENTS OF THIS RULE.
  - (40) A LICENSEE SHALL ENSURE THAT ANY PERSON AT THE LICENSED FACILITY IS TRAINED IN THE REQUIREMENTS OF THIS RULE.
  - (41) A LICENSEE SHALL ENSURE THAT ANY PERSON AT THE LICENSED FACILITY IS TRAINED IN THE REQUIREMENTS OF THIS RULE.
  - (42) A LICENSEE SHALL ENSURE THAT ANY PERSON AT THE LICENSED FACILITY IS TRAINED IN THE REQUIREMENTS OF THIS RULE.
  - (43) A LICENSEE SHALL ENSURE THAT ANY PERSON AT THE LICENSED FACILITY IS TRAINED IN THE REQUIREMENTS OF THIS RULE.
  - (44) A LICENSEE SHALL ENSURE THAT ANY PERSON AT THE LICENSED FACILITY IS TRAINED IN THE REQUIREMENTS OF THIS RULE.
  - (45) A LICENSEE SHALL ENSURE THAT ANY PERSON AT THE LICENSED FACILITY IS TRAINED IN THE REQUIREMENTS OF THIS RULE.
  - (46) A LICENSEE SHALL ENSURE THAT ANY PERSON AT THE LICENSED FACILITY IS TRAINED IN THE REQUIREMENTS OF THIS RULE.
  - (47) A LICENSEE SHALL ENSURE THAT ANY PERSON AT THE LICENSED FACILITY IS TRAINED IN THE REQUIREMENTS OF THIS RULE.
  - (48) A LICENSEE SHALL ENSURE THAT ANY PERSON AT THE LICENSED FACILITY IS TRAINED IN THE REQUIREMENTS OF THIS RULE.
  - (49) A LICENSEE SHALL ENSURE THAT ANY PERSON AT THE LICENSED FACILITY IS TRAINED IN THE REQUIREMENTS OF THIS RULE.
  - (50) A LICENSEE SHALL ENSURE THAT ANY PERSON AT THE LICENSED FACILITY IS TRAINED IN THE REQUIREMENTS OF THIS RULE.
  - (51) A LICENSEE SHALL ENSURE THAT ANY PERSON AT THE LICENSED FACILITY IS TRAINED IN THE REQUIREMENTS OF THIS RULE.
  - (52) A LICENSEE SHALL ENSURE THAT ANY PERSON AT THE LICENSED FACILITY IS TRAINED IN THE REQUIREMENTS OF THIS RULE.
  - (53) A LICENSEE SHALL ENSURE THAT ANY PERSON AT THE LICENSED FACILITY IS TRAINED IN THE REQUIREMENTS OF THIS RULE.
  - (54) A LICENSEE SHALL ENSURE THAT ANY PERSON AT THE LICENSED FACILITY IS TRAINED IN THE REQUIREMENTS OF THIS RULE.
  - (55) A LICENSEE SHALL ENSURE THAT ANY PERSON AT THE LICENSED FACILITY IS TRAINED IN THE REQUIREMENTS OF THIS RULE.
  - (56) A LICENSEE SHALL ENSURE THAT ANY PERSON AT THE LICENSED FACILITY IS TRAINED IN THE REQUIREMENTS OF THIS RULE.
  - (57) A LICENSEE SHALL ENSURE THAT ANY PERSON AT THE LICENSED FACILITY IS TRAINED IN THE REQUIREMENTS OF THIS RULE.
  - (58) A LICENSEE SHALL ENSURE THAT ANY PERSON AT THE LICENSED FACILITY IS TRAINED IN THE REQUIREMENTS OF THIS RULE.
  - (59) A LICENSEE SHALL ENSURE THAT ANY PERSON AT THE LICENSED FACILITY IS TRAINED IN THE REQUIREMENTS OF THIS RULE.
  - (60) A LICENSEE SHALL ENSURE THAT ANY PERSON AT THE LICENSED FACILITY IS TRAINED IN THE REQUIREMENTS OF THIS RULE.
  - (61) A LICENSEE SHALL ENSURE THAT ANY PERSON AT THE LICENSED FACILITY IS TRAINED IN THE REQUIREMENTS OF THIS RULE.
  - (62) A LICENSEE SHALL ENSURE THAT ANY PERSON AT THE LICENSED FACILITY IS TRAINED IN THE REQUIREMENTS OF THIS RULE.
  - (63) A LICENSEE SHALL ENSURE THAT ANY PERSON AT THE LICENSED FACILITY IS TRAINED IN THE REQUIREMENTS OF THIS RULE.
  - (64) A LICENSEE SHALL ENSURE THAT ANY PERSON AT THE LICENSED FACILITY IS TRAINED IN THE REQUIREMENTS OF THIS RULE.
  - (65) A LICENSEE SHALL ENSURE THAT ANY PERSON AT THE LICENSED FACILITY IS TRAINED IN THE REQUIREMENTS OF THIS RULE.
  - (66) A LICENSEE SHALL ENSURE THAT ANY PERSON AT THE LICENSED FACILITY IS TRAINED IN THE REQUIREMENTS OF THIS RULE.
  - (67) A LICENSEE SHALL ENSURE THAT ANY PERSON AT THE LICENSED FACILITY IS TRAINED IN THE REQUIREMENTS OF THIS RULE.
  - (68) A LICENSEE SHALL ENSURE THAT ANY PERSON AT THE LICENSED FACILITY IS TRAINED IN THE REQUIREMENTS OF THIS RULE.
  - (69) A LICENSEE SHALL ENSURE THAT ANY PERSON AT THE LICENSED FACILITY IS TRAINED IN THE REQUIREMENTS OF THIS RULE.
  - (70) A LICENSEE SHALL ENSURE THAT ANY PERSON AT THE LICENSED FACILITY IS TRAINED IN THE REQUIREMENTS OF THIS RULE.
  - (71) A LICENSEE SHALL ENSURE THAT ANY PERSON AT THE LICENSED FACILITY IS TRAINED IN THE REQUIREMENTS OF THIS RULE.
  - (72) A LICENSEE SHALL ENSURE THAT ANY PERSON AT THE LICENSED FACILITY IS TRAINED IN THE REQUIREMENTS OF THIS RULE.
  - (73) A LICENSEE SHALL ENSURE THAT ANY PERSON AT THE LICENSED FACILITY IS TRAINED IN THE REQUIREMENTS OF THIS RULE.
  - (74) A LICENSEE SHALL ENSURE THAT ANY PERSON AT THE LICENSED FACILITY IS TRAINED IN THE REQUIREMENTS OF THIS RULE.
  - (75) A LICENSEE SHALL ENSURE THAT ANY PERSON AT THE LICENSED FACILITY IS TRAINED IN THE REQUIREMENTS OF THIS RULE.
  - (76) A LICENSEE SHALL ENSURE THAT ANY PERSON AT THE LICENSED FACILITY IS TRAINED IN THE REQUIREMENTS OF THIS RULE.
  - (77) A LICENSEE SHALL ENSURE THAT ANY PERSON AT THE LICENSED FACILITY IS TRAINED IN THE REQUIREMENTS OF THIS RULE.
  - (78) A LICENSEE SHALL ENSURE THAT ANY PERSON AT THE LICENSED FACILITY IS TRAINED IN THE REQUIREMENTS OF THIS RULE.
  - (79) A LICENSEE SHALL ENSURE THAT ANY PERSON AT THE LICENSED FACILITY IS TRAINED IN THE REQUIREMENTS OF THIS RULE.
  - (80) A LICENSEE SHALL ENSURE THAT ANY PERSON AT THE LICENSED FACILITY IS TRAINED IN THE REQUIREMENTS OF THIS RULE.
  - (81) A LICENSEE SHALL ENSURE THAT ANY PERSON AT THE LICENSED FACILITY IS TRAINED IN THE REQUIREMENTS OF THIS RULE.
  - (82) A LICENSEE SHALL ENSURE THAT ANY PERSON AT THE LICENSED FACILITY IS TRAINED IN THE REQUIREMENTS OF THIS RULE.
  - (83) A LICENSEE SHALL ENSURE THAT ANY PERSON AT THE LICENSED FACILITY IS TRAINED IN THE REQUIREMENTS OF THIS RULE.
  - (84) A LICENSEE SHALL ENSURE THAT ANY PERSON AT THE LICENSED FACILITY IS TRAINED IN THE REQUIREMENTS OF THIS RULE.
  - (85) A LICENSEE SHALL ENSURE THAT ANY PERSON AT THE LICENSED FACILITY IS TRAINED IN THE REQUIREMENTS OF THIS RULE.
  - (86) A LICENSEE SHALL ENSURE THAT ANY PERSON AT THE LICENSED FACILITY IS TRAINED IN THE REQUIREMENTS OF THIS RULE.
  - (87) A LICENSEE SHALL ENSURE THAT ANY PERSON AT THE LICENSED FACILITY IS TRAINED IN THE REQUIREMENTS OF THIS RULE.
  - (88) A LICENSEE SHALL ENSURE THAT ANY PERSON AT THE LICENSED FACILITY IS TRAINED IN THE REQUIREMENTS OF THIS RULE.
  - (89) A LICENSEE SHALL ENSURE THAT ANY PERSON AT THE LICENSED FACILITY IS TRAINED IN THE REQUIREMENTS OF THIS RULE.
  - (90) A LICENSEE SHALL ENSURE THAT ANY PERSON AT THE LICENSED FACILITY IS TRAINED IN THE REQUIREMENTS OF THIS RULE.
  - (91) A LICENSEE SHALL ENSURE THAT ANY PERSON AT THE LICENSED FACILITY IS TRAINED IN THE REQUIREMENTS OF THIS RULE.
  - (92) A LICENSEE SHALL ENSURE THAT ANY PERSON AT THE LICENSED FACILITY IS TRAINED IN THE REQUIREMENTS OF THIS RULE.
  - (93) A LICENSEE SHALL ENSURE THAT ANY PERSON AT THE LICENSED FACILITY IS TRAINED IN THE REQUIREMENTS OF THIS RULE.
  - (94) A LICENSEE SHALL ENSURE THAT ANY PERSON AT THE LICENSED FACILITY IS TRAINED IN THE REQUIREMENTS OF THIS RULE.
  - (95) A LICENSEE SHALL ENSURE THAT ANY PERSON AT THE LICENSED FACILITY IS TRAINED IN THE REQUIREMENTS OF THIS RULE.
  - (96) A LICENSEE SHALL ENSURE THAT ANY PERSON AT THE LICENSED FACILITY IS TRAINED IN THE REQUIREMENTS OF THIS RULE.
  - (97) A LICENSEE SHALL ENSURE THAT ANY PERSON AT THE LICENSED FACILITY IS TRAINED IN THE REQUIREMENTS OF THIS RULE.
  - (98) A LICENSEE SHALL ENSURE THAT ANY PERSON AT THE LICENSED FACILITY IS TRAINED IN THE REQUIREMENTS OF THIS RULE.
  - (99) A LICENSEE SHALL ENSURE THAT ANY PERSON AT THE LICENSED FACILITY IS TRAINED IN THE REQUIREMENTS OF THIS RULE.
  - (100) A LICENSEE SHALL ENSURE THAT ANY PERSON AT THE LICENSED FACILITY IS TRAINED IN THE REQUIREMENTS OF THIS RULE.

**WALL TYPES/SECTIONS**



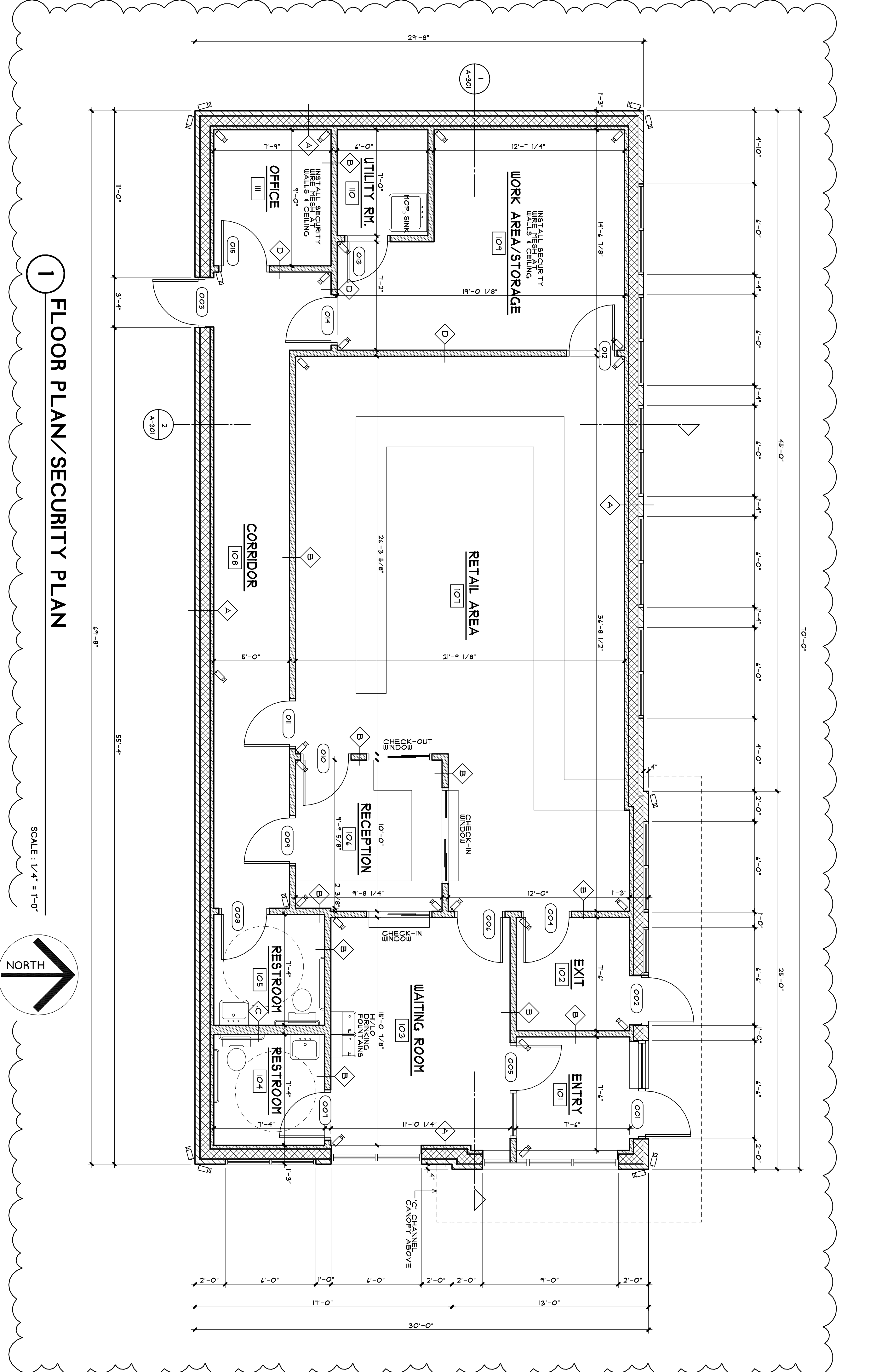
WALL TYPE	SECTION
PARTITION TYPE "B"	SECTION B
PARTITION TYPE "C"	SECTION C
PARTITION TYPE "D"	SECTION D

SYMBOL KEY:	DESCRIPTION
[Symbol]	VIDEO SURVEILLANCE REQUIREMENTS
[Symbol]	SEE STRUCTURAL DRAWINGS FOR ADDITIONAL INFORMATION, DETAILS, NOTES, ETC.

WALL LEGEND:	DESCRIPTION
[Symbol]	1" BRICK 1/2" AIR SPACE 1 ADJUSTABLE BRICK TIES @ 4" O.C. VERTICAL AND 24" O.C. HORIZONTAL AND 5/8" BAR @ 48" O.C. VERT. GROUT SOLID @ 1/2" THE FINAL FINISHING W/ 1/2" GYP. BD.
[Symbol]	3/4" METAL STUDS (8GA) W/ 1/2" FLANGE AT 1/2" O.C. W/ 5/8" GYP. BD. ON EACH SIDE EXTENDING TO UNDERSIDE OF DECK CONCRETE OVER INSULATION.
[Symbol]	1/2" METAL STUDS (8GA) W/ 1/2" FLANGE AT 1/2" O.C. W/ 5/8" GYP. BD. ON EACH SIDE EXTENDING TO UNDERSIDE OF DECK CONCRETE OVER INSULATION.
[Symbol]	SAVE AS WALL TYPE 'B'. ADD SECURITY WIRE MESH

SHEET NOTES:
1. ALL INTERIOR & EXTERIOR DOORS & OPERABLE WINDOWS TO HAVE COMMERCIAL DOOR LOCKS.
2. THE VENTILATION DOORS TO HAVE A OTHER LOCK DIFFERENT THAN ALL OTHER DOORS.
3. SAVE STORAGE ROOM MUST HAVE A OTHER LOCK DIFFERENT THAN ALL OTHER DOORS.
4. WHOLE BUILDING AND APPLIANCES TO BE ENERGY STAR CERTIFIED (WATER HEATER, REFRIGERATOR, ETC).
5. ALL INTERIOR FIXTURES TO USE CARBON DIOXIDE/SCORBBER FOR ODOR CONTROL TO BE USED.

SQUARE FOOTAGE
TOTAL GROSS FLOOR AREA 2,079 SQ. FT.
USABLE FLOOR AREA (UFA) 1,054 SQ. FT.
EXCLUDES RESTROOMS, UTILITY RM., AND CORRIDORS.
DO NOT SCALE THESE DRAWINGS. USE CALCULATED DIMENSIONS.
IF VARIATIONS OCCUR CONTACT ARCHITECT FOR CLARIFICATION.
SCREENING SIZES FROM WINDOWS/DOOR SCHEDULE



**GENERAL CONSTRUCTION NOTES:**

1. THESE DRAWINGS ARE INTENDED TO OUTLINE THE GENERAL SCOPE OF THE WORK. EACH CONTRACTOR SHALL FIELD VERIFY ALL EXISTING CONDITIONS AND DIMENSIONS ON ALL DRAWINGS AND IN FIELD PRIOR TO BIDDING BEFORE STARTING ANY WORK. CONTRACTORS SHALL ALSO BE RESPONSIBLE FOR ADHERING TO ALL APPLICABLE CODES AND GENERALLY ACCEPTED TRADE PRACTICES, AND ALL REGULATORY AGENCIES.
2. EACH CONTRACTOR SHALL VERIFY EXISTING CONDITIONS AND SHALL REPORT ANY DISCREPANCIES TO THE DESIGNER PRIOR TO CONSTRUCTION.
3. DO NOT SCALE DRAWINGS. DIMENSIONS GOVERN. LARGER SCALE DETAILS OVER SMALL SCALE. GENERAL & SPECIFIC NOTES TAKE PRECEDENCE.
4. GENERAL CONTRACTOR WILL SEE THAT ALL SUBCONTRACTORS RECEIVE COMPLETE SETS OF WORKING DRAWINGS.
5. NOT USED.
6. ALL DIMENSIONS ARE FROM FACE TO FACE OF FINISHED WALL UNLESS NOTED OTHERWISE.
7. ALL DOORS SHALL BE 4" FROM PERPENDICULAR WALL UNLESS NOTED OTHERWISE.
8. CONTRACTOR TO ALLOW FOR UNIFORM FLOOR CONDITIONS PRIOR TO FLOORING.
9. INSTALLATION, ADJUST DOORS AND FRAMES AS REQUIRED.
10. PROVIDE NECESSARY ALLOWING WHERE TREATED, CONCEALED WITHIN THE CONSTRUCTION, AS REQUIRED FOR ANY 1. ALL ITEMS THAT MUST BE SECURED TO THE WALL.
11. NOT USED.
12. ALL SURFACES TO BE PROPERLY PREPARED TO RECEIVE NEW FINISHES. ALL BANDING SHALL EMPLOY THE USE OF A VACUUM ATTACHED SANDER.
13. ALL FINISHES TO BE APPLIED IN ACCORDANCE WITH THE MANUFACTURER'S SPECIFICATIONS FOR A PARTICULAR FINISH. THE MANUFACTURER'S SPECIFICATIONS TO BE APPLIED TO ALL FINISHES INCLUDING, BUT NOT LIMITED TO, PAINTS, STAINING, ETC.
14. GENERAL CONTRACTOR TO VERIFY THE LOCATION, AND CHARACTERISTICS OF ALL WORK AND EQUIPMENT PRIOR TO THE START OF RELATED WORK.
15. CONTRACTOR TO COORDINATE ALL POWER & COMMUNICATION INSTALLATION WITH TENANT FOR PROPER PLACEMENT.
16. FINISH COMPLETE SHOP AND INSTALLATION DRAWINGS OF ALL FINISHES, CABINETRY, FINISH CARPENTRY ITEMS TO THE DESIGNER FOR REVIEW PRIOR TO FABRICATION OF ANY ITEMS. SHOP DRAWINGS SHALL SHOW IN DETAIL ALL JOINING, ANCHORAGE, SIZE, FINISH, SEAMS, AND ALL OTHER PERTINENT INFORMATION.
17. NOT USED.
18. ALL NEW CONSTRUCTION TO MEET A.D.A. COMPLIANCE.
19. ALL TRADES RESPONSIBLE FOR MATERIAL DELIVERY TO SITE. PROPER STORAGE SHALL NOT HINDER OWNERS' ACTIVITIES.

SHEET NO. A-101	REVISIONS:	REVIEW SET:	DATE:	SHEET INFORMATION:	CLIENT/PROJECT:			
				<b>FLOOR PLAN</b> CAD FILE: MATURE FINISH DATE: 01-26-16 02-06-16 02-06-16	NATURE'S FINEST PROVISIONING CENTER 625 NORTH AVENUE BATTLE CREEK, MICHIGAN 49017	DAZ ARCHITECTURAL DESIGN, INC.	GREEN-BUILDING	LEED