

# COLLEGE PARKWAY OFFICE

## PRIME BUSINESS CORRIDOR



### FOR LEASE

8191 COLLEGE PARKWAY, FORT MYERS, FL 33919



UNIT	SIZE (SF)	LEASE RATE (PSF)	MONTHLY BASE RENT	AVAILABILITY
202	4,000	\$18.00	\$6,000.00	Immediately
205	887	\$22.00	\$1,626.17	Immediately
300	612	\$22.00	\$1,122.00	Immediately

- PRICE:** \$18.00 - \$22.00 PSF Modified Gross
- LOCATION:** On College Parkway, just west of Summerlin Road
- ZONING:** CT - Tourist Commercial (Lee County)
- YEAR BUILT:** 1987 (Renovated 2021)
- PARKING:** 131 Spaces (1 Reserved Covered Space Per Tenant)

This office property offers an exceptional opportunity for businesses seeking a prime location in Southwest Florida. Situated along College Parkway—one of the area’s most prominent business corridors—it provides excellent visibility and accessibility. Suites feature well-designed layouts with private offices, open workspaces, and abundant natural light. Tenants enjoy ample parking, including one reserved covered space per suite, along with professional onsite management. Conveniently located next to Canterbury School and near Florida SouthWestern State College (FSW), this property offers easy access to major roadways, making it an ideal choice for general office or medical office users.



**CONTACT**  
**ENN LUTHRINGER, CCIM**  
Partner  
239.481.3800 x206  
enn.luthringer@creconsultants.com

12140 Carissa Commerce Ct, Suite 102  
Fort Myers, FL 33966  
1100 Fifth Ave. S, Suite 404  
Naples, FL 34102

The information contained herein was obtained from sources believed reliable. CRE Consultants makes no guarantees, warranties or representations as to the completeness or accuracy thereof, and is subject to errors, omissions, change of price or conditions prior to sale or lease, or withdrawal without notice. 03/16/26

# COLLEGE PARKWAY OFFICE

## PRIME BUSINESS CORRIDOR



### FOR LEASE

8191 COLLEGE PARKWAY, FORT MYERS, FL 33919



### HIGHLIGHTS

- Prime Location on College Parkway, next to Canterbury School and near FSW
- Convenient Parking with ample parking and one reserved covered space per tenant
- High Traffic / Access to Markets: The property's location offers strong access to major markets and routes within Southwest Florida, amplifying visibility and business reach.
- Professional On-Site Management: Tenants benefit from managed services and a multi-tenant office environment that blends visibility with flexibility.



### CONTACT

**ENN LUTHRINGER, CCIM**

Partner

239.481.3800 x206

[enn.luthringer@creconsultants.com](mailto:enn.luthringer@creconsultants.com)

The information contained herein was obtained from sources believed reliable. CRE Consultants makes no guarantees, warranties or representations as to the completeness or accuracy thereof, and is subject to errors, omissions, change of price or conditions prior to sale or lease, or withdrawal without notice.

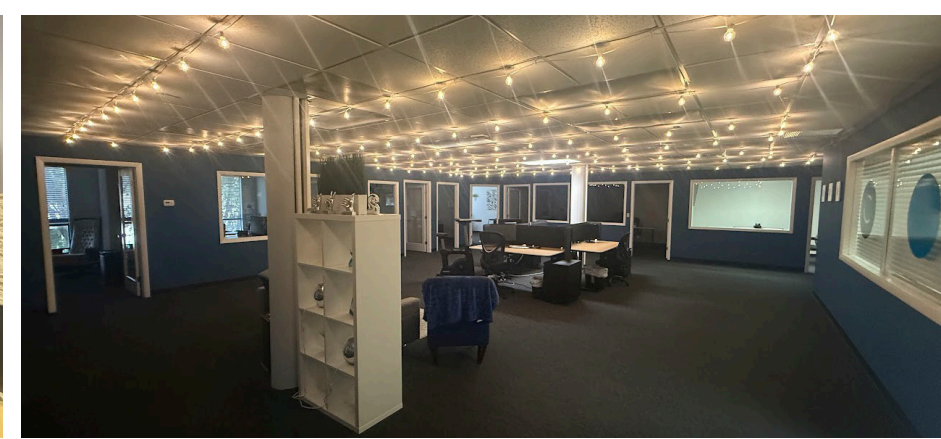
# COLLEGE PARKWAY OFFICE

## PRIME BUSINESS CORRIDOR



### FOR LEASE

8191 COLLEGE PARKWAY, FORT MYERS, FL 33919



**CONTACT**  
**ENN LUTHRINGER, CCIM**  
Partner  
239.481.3800 x206  
enn.luthringer@creconsultants.com  
12140 Carissa Commerce Ct, Suite 102  
Fort Myers, FL 33966  
1100 Fifth Ave. S, Suite 404  
Naples, FL 34102

# COLLEGE PARKWAY OFFICE

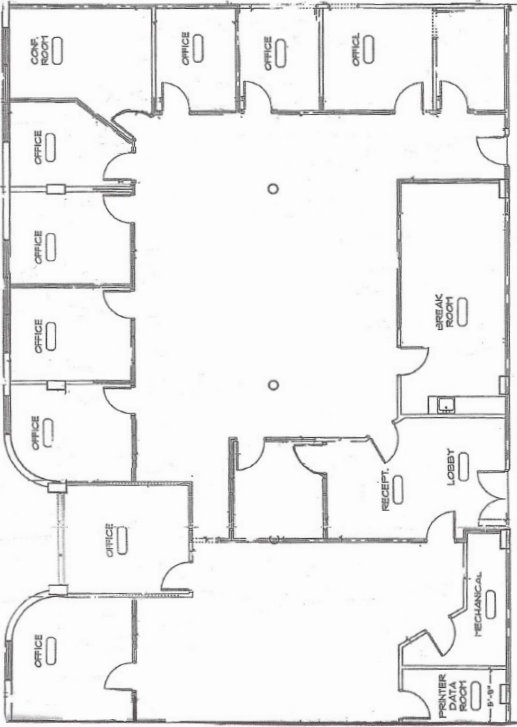
## PRIME BUSINESS CORRIDOR

### FOR LEASE

8191 COLLEGE PARKWAY, FORT MYERS, FL 33919

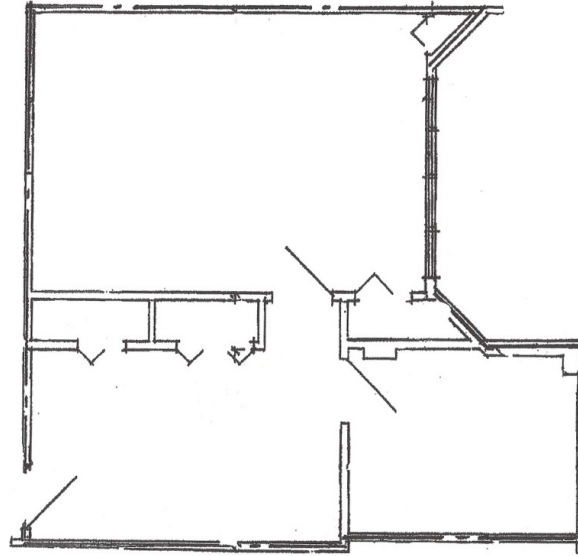
## SUITE 202

**4,000± SF**



## SUITE 300

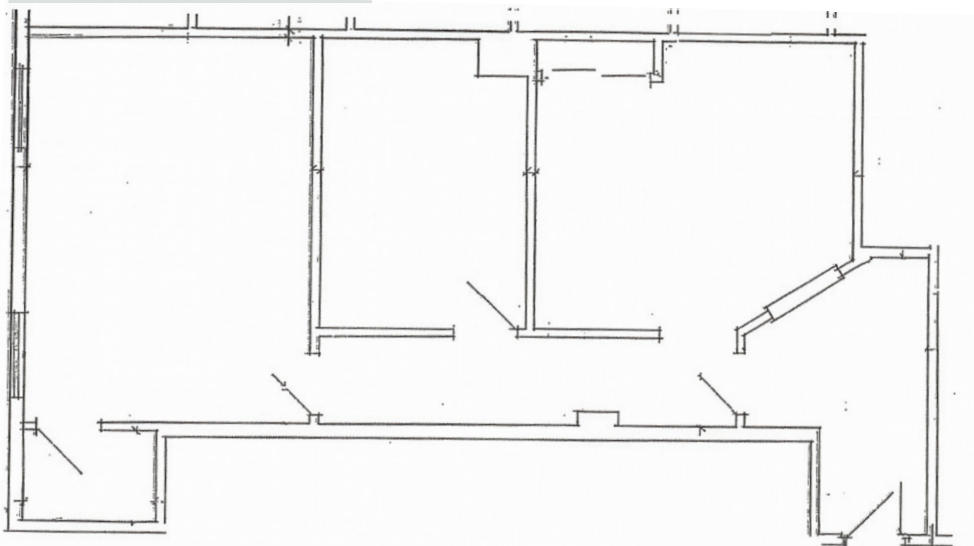
**612± SF**



## FLOOR PLANS

## SUITE 205

**887± SF**



### HIGHLIGHTS

- Premier Corridor Location: Positioned along the high-visibility business corridor of College Parkway, one of Southwest Florida's most prominent professional thoroughfares.
- Proximity to Educational Anchors: Directly adjacent to Canterbury School (8141 College Parkway) and near Florida SouthWestern State College (FSW), supporting daytime population and prestige.
- Recent Renovation / Modernization: Built in 1987, the building underwent renovation in 2021—enhancing building systems and aesthetics
- Ideal for Medical or General Office Users: The layout and finish are suited to medical, professional services, or corporate office tenants seeking a strategic Southwest Florida presence.

### CONTACT

**ENN LUTHRINGER, CCIM**

Partner

239.481.3800 x206

[enn.luthringer@creconsultants.com](mailto:enn.luthringer@creconsultants.com)

12140 Carissa Commerce Ct, Suite 102  
Fort Myers, FL 33966

1100 Fifth Ave. S, Suite 404  
Naples, FL 34102