

COLONIAL EXECUTIVE PARK

BUILT-OUT OFFICE



FOR SUBLEASE/DIRECT LEASE

3850-3860 COLONIAL BOULEVARD, FORT MYERS, FL 33966



BLDG	UNIT	SIZE (SF)	LEASE RATE (PSF)	MONTHLY RENT	OpEx (PSF)	MONTHLY OpEx	MONTHLY TOTAL	AVAILABLE
3850	200	3250	\$18.00	\$4,875.00	\$8.50	\$2,302.08	\$7,177.08	06/01/2026

- LEASE RATE:** \$18.00 PSF NNN
- OPEX:** \$8.50 PSF (2026)
- SIZE:** 1,480 -3,250 ± SF
- LOCATION:** On Colonial Boulevard, between Metro Parkway and Winkler Avenue
- YEAR BUILT:** 2005

COLONIAL EXECUTIVE PARK

This well-maintained Class A building with monument signage on Colonial Boulevard is the perfect location for any business looking for excellent exposure and access to all major markets in Southwest Florida. This area is experiencing explosive residential and commercial growth with many single-family and apartment developments such as Eagle Reserve by Pulte and Heritage Palms Golf & Country Club, just moments away. High retail concentration area with a mix of top national brands offering shopping, dining and entertainment venues such as; Top Golf, Walmart, Target, Kohl's, Lowe's, Home Depot, Bealls, Publix, TJ Maxx, Hobby Lobby, BJ's Wholesale, Chick-fil-A, Dunkin', Chipotle, Chili's, First Watch, and Lee Health Hospital.

CONTACT
ENN LUTHRINGER, CCIM
 Partner
 239.481.3800 x206
 enn.luthringer@creconsultants.com

12140 Carissa Commerce Ct, Suite 102
 Fort Myers, FL 33966
 1100 Fifth Ave. S, Suite 404
 Naples, FL 34102

The information contained herein was obtained from sources believed reliable. CRE Consultants makes no guarantees, warranties or representations as to the completeness or accuracy thereof, and is subject to errors, omissions, change of price or conditions prior to sale or lease, or withdrawal without notice. 03/16/26

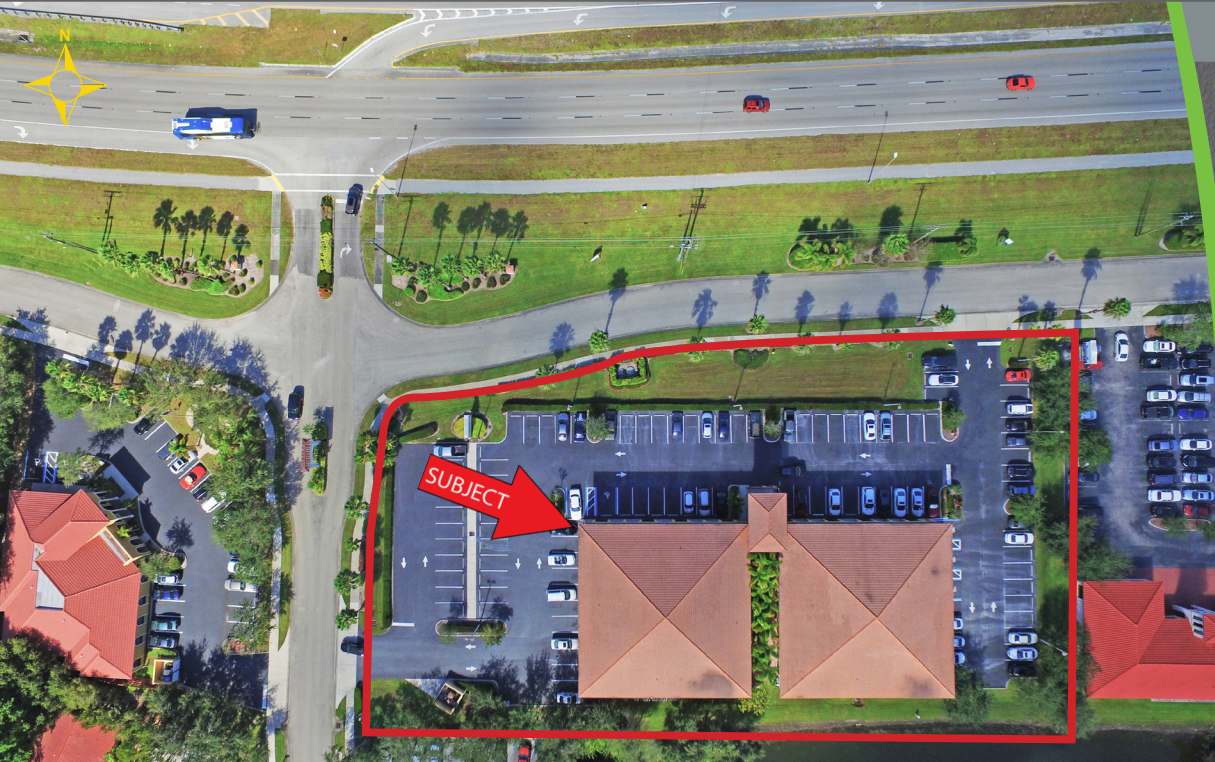
COLONIAL EXECUTIVE PARK

BUILT-OUT OFFICE



FOR SUBLEASE/DIRECT LEASE

3850-3860 COLONIAL BOULEVARD, FORT MYERS, FL 33966

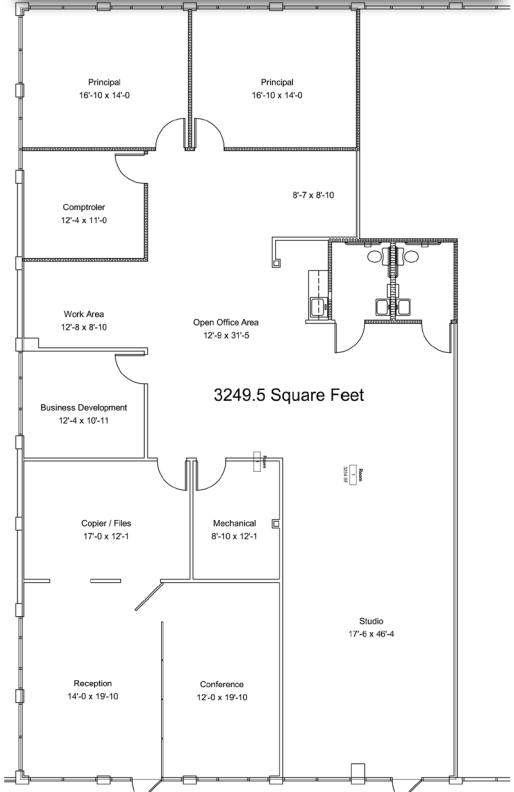


HIGHLIGHTS

- Signalized intersection
- Highly visible with frontage on Colonial Boulevard
- Ample parking
- Pylon signage
- Easy access to all major roads with I-75 just minutes away

SUITE 200

3,250± SF



CONTACT
ENN LUTHRINGER, CCIM
 Partner
 239.481.3800 x206
 enn.luthringer@creconsultants.com

The information contained herein was obtained from sources believed reliable. CRE Consultants makes no guarantees, warranties or representations as to the completeness or accuracy thereof, and is subject to errors, omissions, change of price or conditions prior to sale or lease, or withdrawal without notice.