

504 Northwest Highway

Cary, IL 60013

For Lease

MLS #12081168

RETAIL



RETAIL END CAP 4,603 SF

\$7,000/MO. \$18.25 PSF (GROSS)

Property Description

**END CAP SPACE
4,603 SF**

Highly visible retail space at the signalized intersection of Route 14 (Northwest Highway) and Cary-Algonquin Road in the 26,000 SF Walgreens anchored strip center.

4,603 SF end cap, former Anytime Fitness features high ceilings, mirrored walls, 2 training rooms, 4 bathrooms (2 w/showers) , break room w/ laundry, office and reception area. Large window lined open area and ±400 SF studio area with mirrors for yoga or dance space. Monument signage available. Owner offers 2 months free rent.

Specifications

Strip Center Size:	26,015 SF
Year Built:	1996
HVAC System:	GFA/ Central Air
Washrooms:	4 (2 w/showers)
Sprinklers:	Yes
Ceiling Height:	12 ft
Parking:	53 (common)
Sewer/Water:	City
Zoning:	B2
Utilities:	Tenant Responsibility
CAM & Taxes	Included
Electrical:	200 amp
PIN #:	19-12-382-001

Demographics	1 Mile	3 Miles	5 Miles
Total Population	9,617	39,035	101,649
Average HH Income	\$123,780	\$137,517	\$133,244

[CLICK HERE TO VIEW OUR WEBSITE](#)

No warranty or representation is made as to the accuracy of the foregoing information. Terms of sale or lease and availability are subject to change or withdrawal without notice. This document is for information purposes only. No offer of sub-agency is being made.



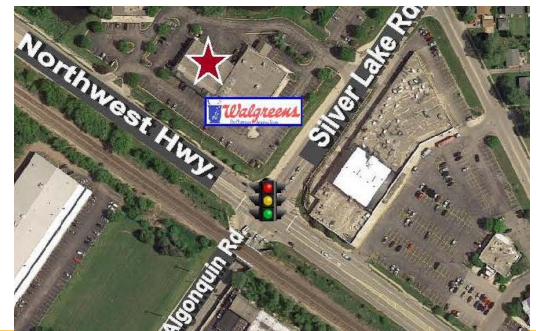
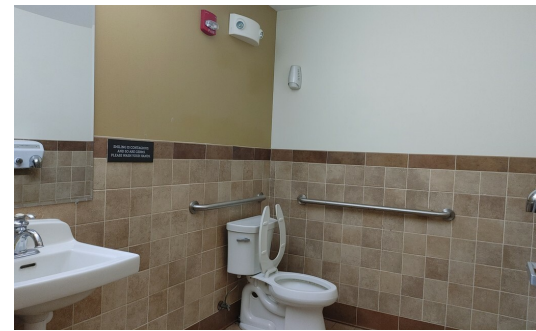
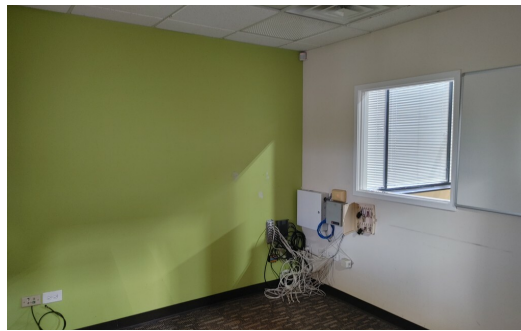
Bruce Kaplan
Senior Broker
BruceK@PremierCommercialRealty.com
O: 847.854.2300 x20 C: 847.507.1759

Shari Haefner
Broker Associate
ShariH@premiercommercialrealty.com
O: 847.854.2300 x18 C: 312.671.3600

504 Northwest Highway
Cary, IL 60013

For Lease

RETAIL



[CLICK HERE TO VIEW OUR WEBSITE](#)

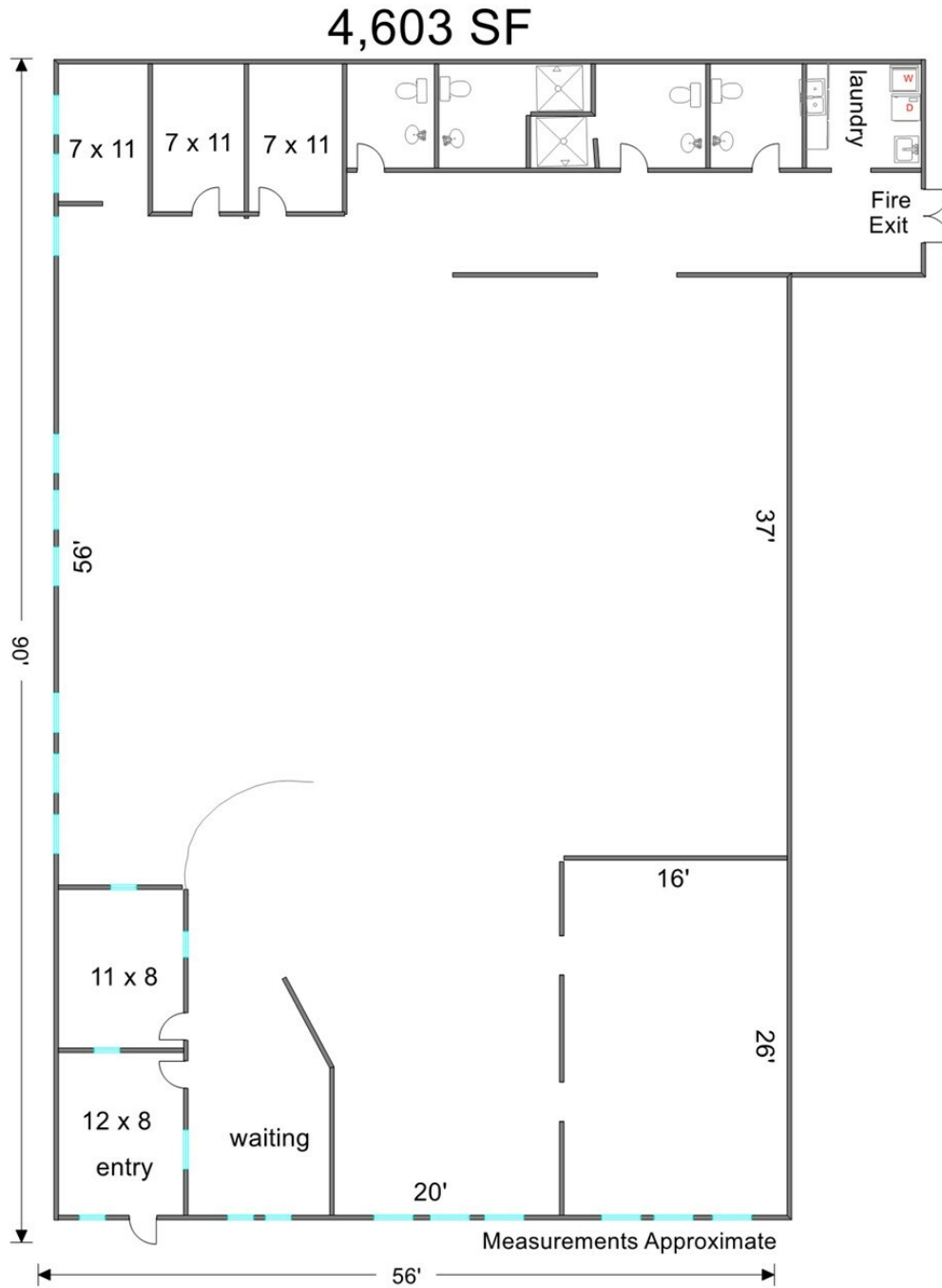
No warranty or representation is made as to the accuracy of the foregoing information. Terms of sale or lease and availability are subject to change or withdrawal without notice. This document is for information purposes only. No offer of sub-agency is being made.



Bruce Kaplan
Senior Broker
BruceK@PremierCommercialRealty.com
O: 847.854.2300 x20 C: 847.507.1759

Shari Haefner
Broker Associate
ShariH@premiercommercialrealty.com
O: 847.854.2300 x18 C: 312.671.3600

RETAIL



[CLICK HERE TO VIEW OUR WEBSITE](#)

No warranty or representation is made as to the accuracy of the foregoing information. Terms of sale or lease and availability are subject to change or withdrawal without notice. This document is for information purposes only. No offer of sub-agency is being made.



Bruce Kaplan
Senior Broker

BruceK@PremierCommercialRealty.com
O: 847.854.2300 x20 C: 847.507.1759

Shari Haefner
Broker Associate

ShariH@premiercommercialrealty.com
O: 847.854.2300 x18 C: 312.671.3600