

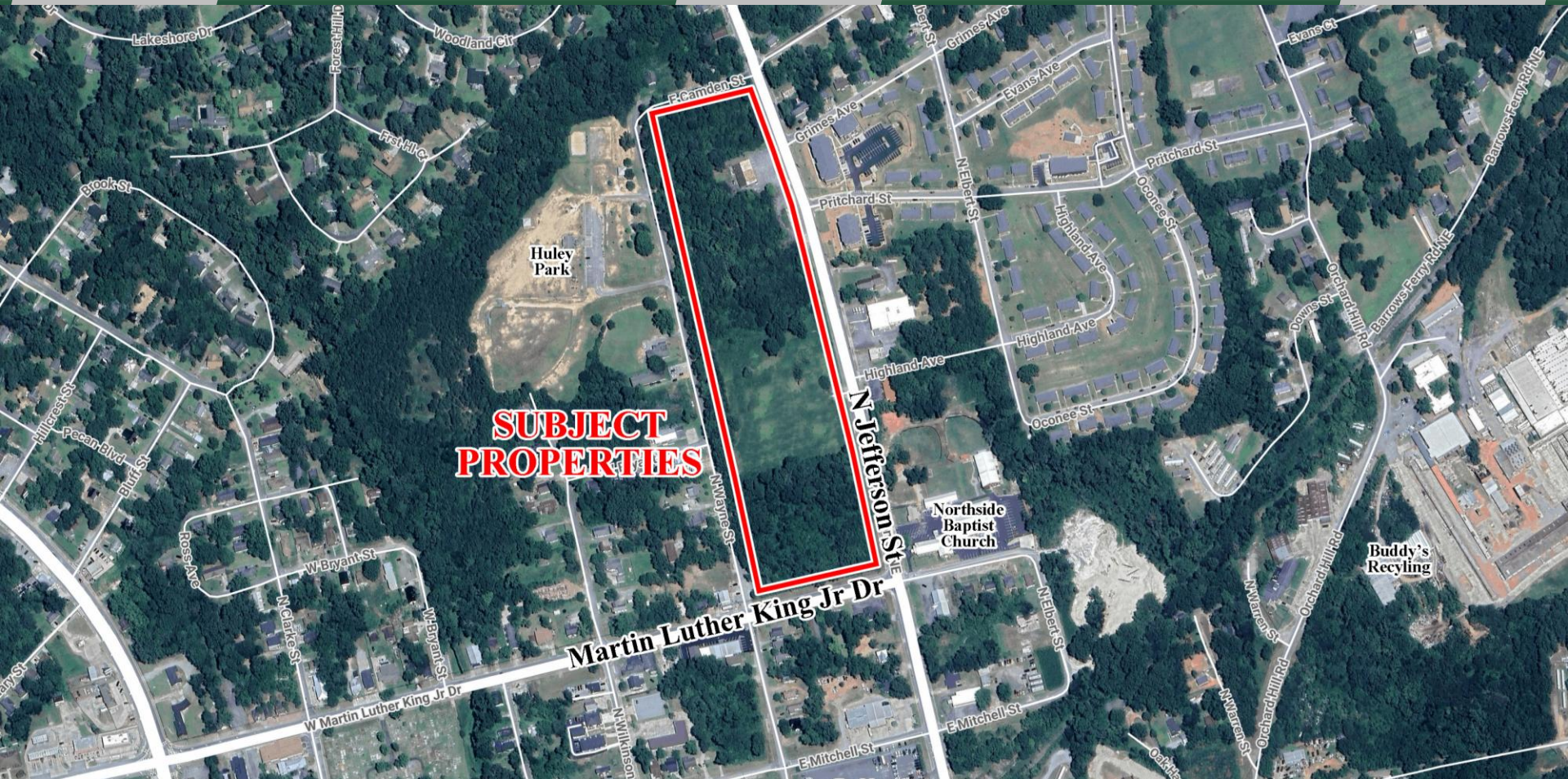
Commercial Lot Available - 3 Parcels Sold Together 1000, 1100, & 1212 North Jefferson Street Milledgeville, GA 31061



Summary

Area Info

Aerial



**SUBJECT
PROPERTIES**

Martin Luther King Jr Dr

N Jefferson St

CONTACT

Patty Burns, CCIM, ALC
478-746-9421 Office
478-951-5100 Cell
patty@fickling.com
www.georgiacommercialrealestate.net

Trip Wilhoit, CCIM, ALC
478-746-9421 Office
478-960-4080 Cell
trip@fickling.com

Jonathan Schuemann
478-746-9421 Office
561-676-4633 Cell
jonathan@fickling.com



577 Mulberry St, Suite 1100
Macon, GA 31201
478.746.9421 Office
<https://commercial.fickling.com>

This information is from resources deemed to be reliable and is subject to change without notice. No warranties or guarantees for accuracy are made by Fickling and Company.

Commercial Lot Available - 3 Parcels Sold Together
1000, 1100, & 1212 North Jefferson Street
Milledgeville, GA 31061



PROPERTY INFORMATION

BUILDING	
Property Address:	1000, 1100, & 1212 North Jefferson St Milledgeville, GA 31061
County:	Baldwin
Topography:	Flat
Frontage:	North Jefferson Street - 1,316'± MLK Jr Drive - 418'±
Utilities:	All Available
Taxes:	\$2,024.68 (2025 City & County)
Traffic Count:	North Jefferson Street -10,800 VPD MLK Jr Drive - 10,100 VPD

SITE	
Site Sizes:	1100 North Jefferson Street: ±10 Acres 1000 North Jefferson Street: ±4 Acres 1212 North Jefferson Street: ±2 Acres
Parcel IDs:	1100 & 1212 North Jefferson Street: M79 131 1000 North Jefferson Street: M79 125
Zoning:	Community Commercial

Demographics 2025	3 Miles	5 Miles	10 Miles
Population	18,553	29,995	46,526
Avg HH Income	\$83,660	\$90,805	\$94,046
Median Age	30.7	34.7	38.4

REDUCED: \$998,000.00 SALE PRICE: ~~\$1,500,000.00~~

CONTACT

Patty Burns, CCIM, ALC

478-746-9421 Office

478-951-5100 Cell

patty@fickling.com

www.georgiacommercialrealestate.net

Trip Wilhoit, CCIM, ALC

478-746-9421 Office

478-960-4080 Cell

trip@fickling.com

Jonathan Schuemann

478-746-9421 Office

561-676-4633 Cell

jonathan@fickling.com

577 Mulberry St, Suite 1100

Macon, GA 31201

478.746.9421 Office

https://commercial.fickling.com

This information is from resources deemed to be reliable and is subject to change without notice. No warranties or guarantees for accuracy are made by Fickling and Company.

Commercial Lot Available - 3 Parcels Sold Together 1000, 1100, & 1212 North Jefferson Street Milledgeville, GA 31061



Summary

Area Info

Aerial

AREA INFORMATION

PROPERTY

This property is three parcels sold together. 1000 North Jefferson Street is a ± 4 Acre corner lot, 1100 North Jefferson Street is a ± 10 Acre lot adjacent, and 1212 North Jefferson Street is a ± 2 Acre lot. Lots are situated in a high traffic area with great visibility. Properties have flat topography, with all utilities available to site. Ideal location for retail, restaurant or office.

LOCATION

Convenient to Georgia College & State University, Georgia Military College, downtown Milledgeville, the Milledgeville Mall, and many restaurants, banks and retail.

NOTES

There is a small store on 1212 North Jefferson Street that has a lease until October 2026.

CONTACT

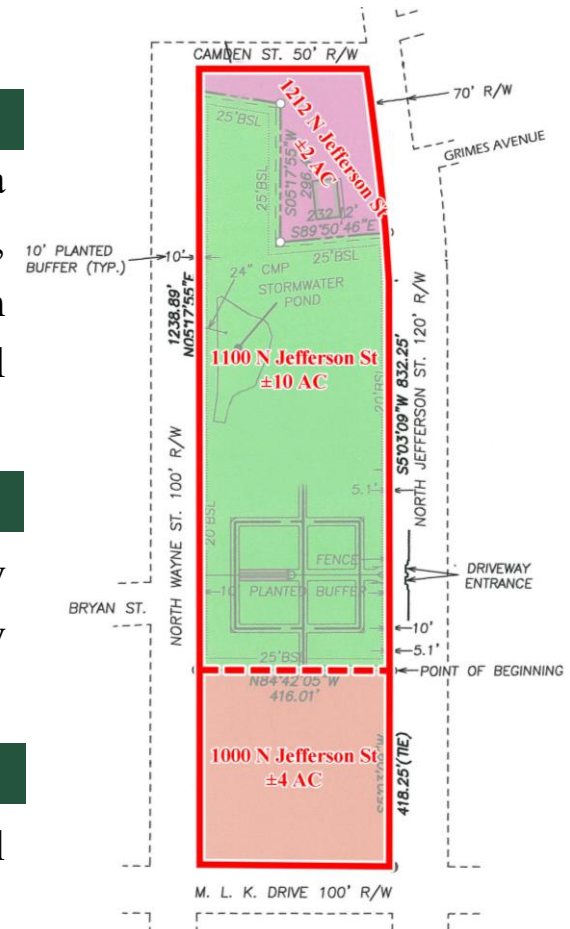
Patty Burns, CCIM, ALC
478-746-9421 Office
478-951-5100 Cell
patty@fickling.com
www.georgiacommercialrealestate.net

Trip Wilhoit, CCIM, ALC
478-746-9421 Office
478-960-4080 Cell
trip@fickling.com

Jonathan Schuemann
478-746-9421 Office
561-676-4633 Cell
jonathan@fickling.com



577 Mulberry St, Suite 1100
Macon, GA 31201
478.746.9421 Office
https://commercial.fickling.com



Commercial Lot Available - 3 Parcels Sold Together 1000, 1100, & 1212 North Jefferson Street Milledgeville, GA 31061

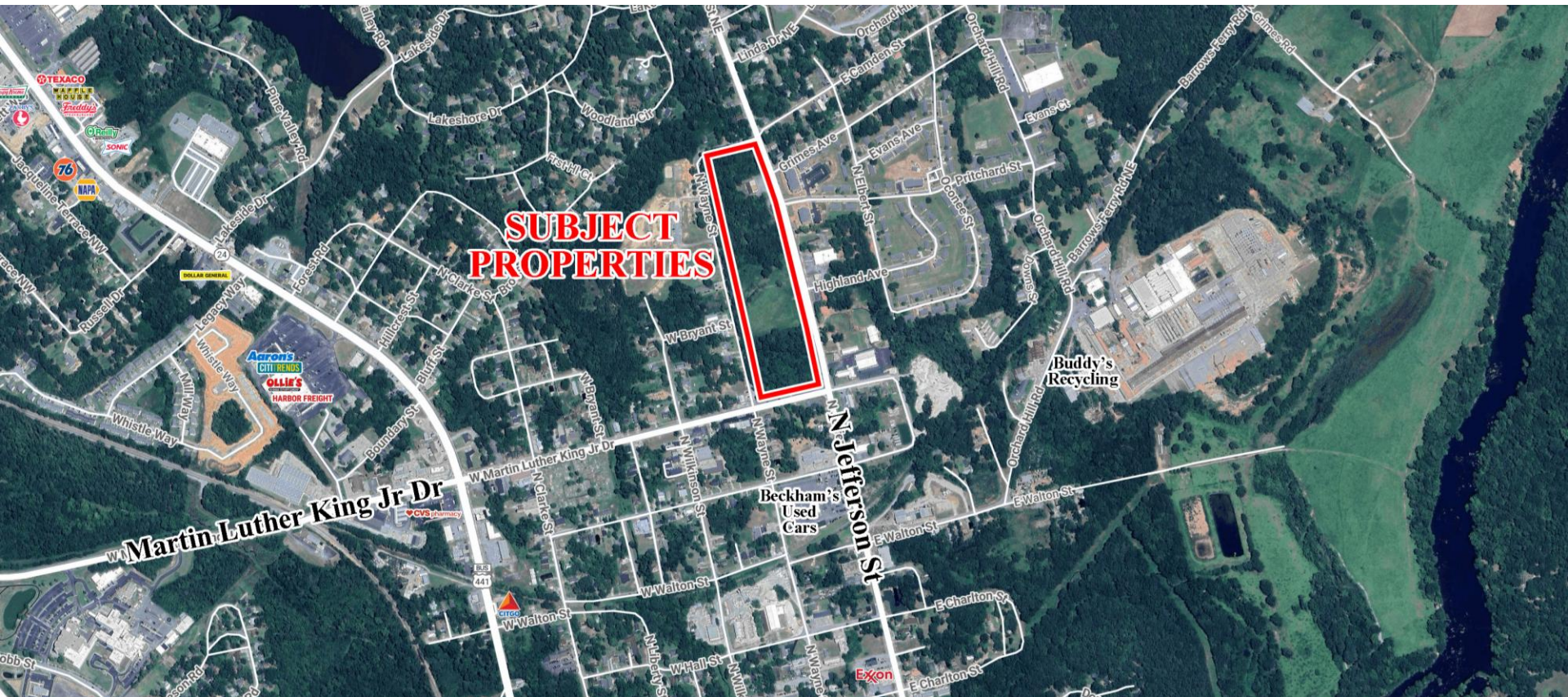


Summary

Area Info

Aerial

AERIAL



CONTACT

Patty Burns, CCIM, ALC
478-746-9421 Office
478-951-5100 Cell
patty@fickling.com
www.georgiacommercialrealestate.net

Trip Wilhoit, CCIM, ALC
478-746-9421 Office
478-960-4080 Cell
trip@fickling.com

Jonathan Schuemann
478-746-9421 Office
561-676-4633 Cell
jonathan@fickling.com



577 Mulberry St, Suite 1100
Macon, GA 31201
478.746.9421 Office
<https://commercial.fickling.com>

This information is from resources deemed to be reliable and is subject to change without notice. No warranties or guarantees for accuracy are made by Fickling and Company.