

Highly Improved. Fantastic Amenities. Excellent Location.



# MIZNER PLACE

Premier Destination for  
Wellington Professionals

OFFICE | MEDICAL | RETAIL



**Jason L. Sundook, SIOR**  
561 471 8000 | [www.mhcreal.com](http://www.mhcreal.com)



±1,512-5,100 SF  
Class-A Office/Retail Space  
in the Heart of Wellington



**MIZNER PLACE | 12300 South Shore Boulevard, Wellington, Florida 33414**

## Property Features

- Highly improved and well-maintained building
- Lush landscaping and Mediterranean inspired architecture
- Signage, improvement allowance and covered parking available
- Located in the Winter Equestrian Capital of the World, with a mecca of programs, activities and events
- In the heart of Wellington, adjacent to Palm Beach Polo, and minutes from the Florida Turnpike, US-441, the Mall at Wellington Green, and more

For more information:

**Jason L. Sundook, SIOR**

Principal | [jsundook@mhcreal.com](mailto:jsundook@mhcreal.com)

## Key Features:



**Mixed-use building with office, medical and retail space for lease**



**Signage opportunities**



**Ground-floor restaurant/retail space available**



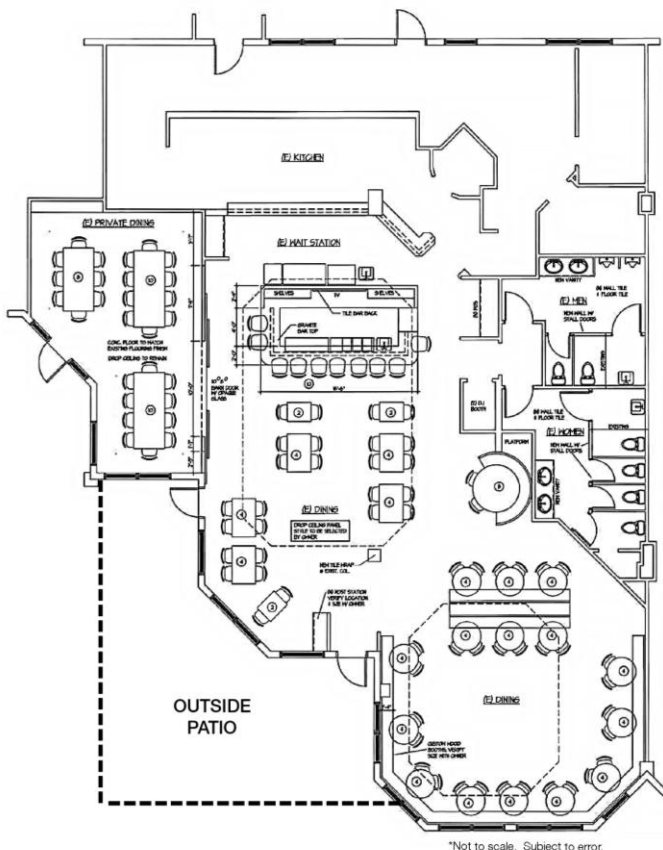
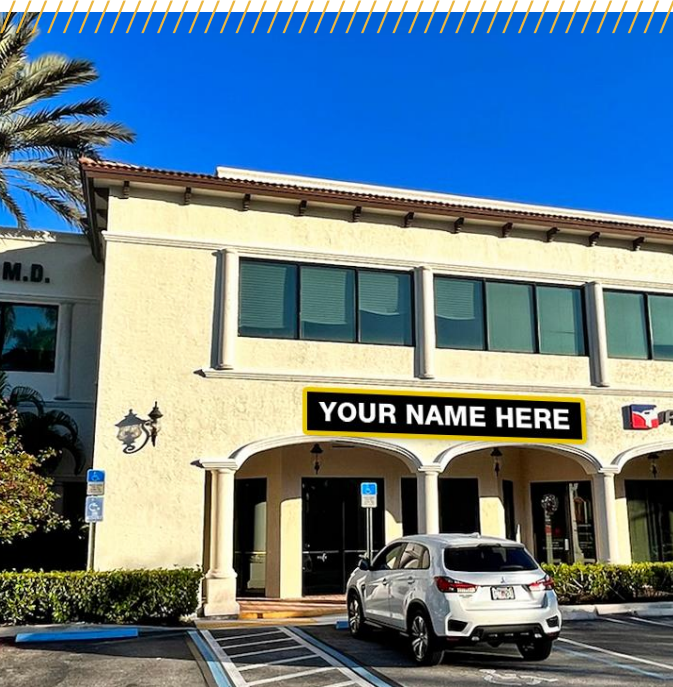
**Equestrian community in the heart of Wellington**





## RESTAURANT, RETAIL AND BEYOND

# Ground-Floor Space with Patio & Courtyard Views



### Suite 110

±5,100 SF | divisible from ±2,500

- Ground-floor location with high visibility, direct entry, and signage opportunities
- 2<sup>nd</sup> generation restaurant space with the option to customize/divide space for your unique needs
- Covered patio & scenic courtyard with fountain views
- Highly desirable & strategic retail/restaurant location, with unbeatable demographics

**EXPLORE THE POSSIBILITIES**  
**561 471 8000**

**Jason L. Sundook, SIOR**  
[jsundook@mhcreal.com](mailto:jsundook@mhcreal.com)

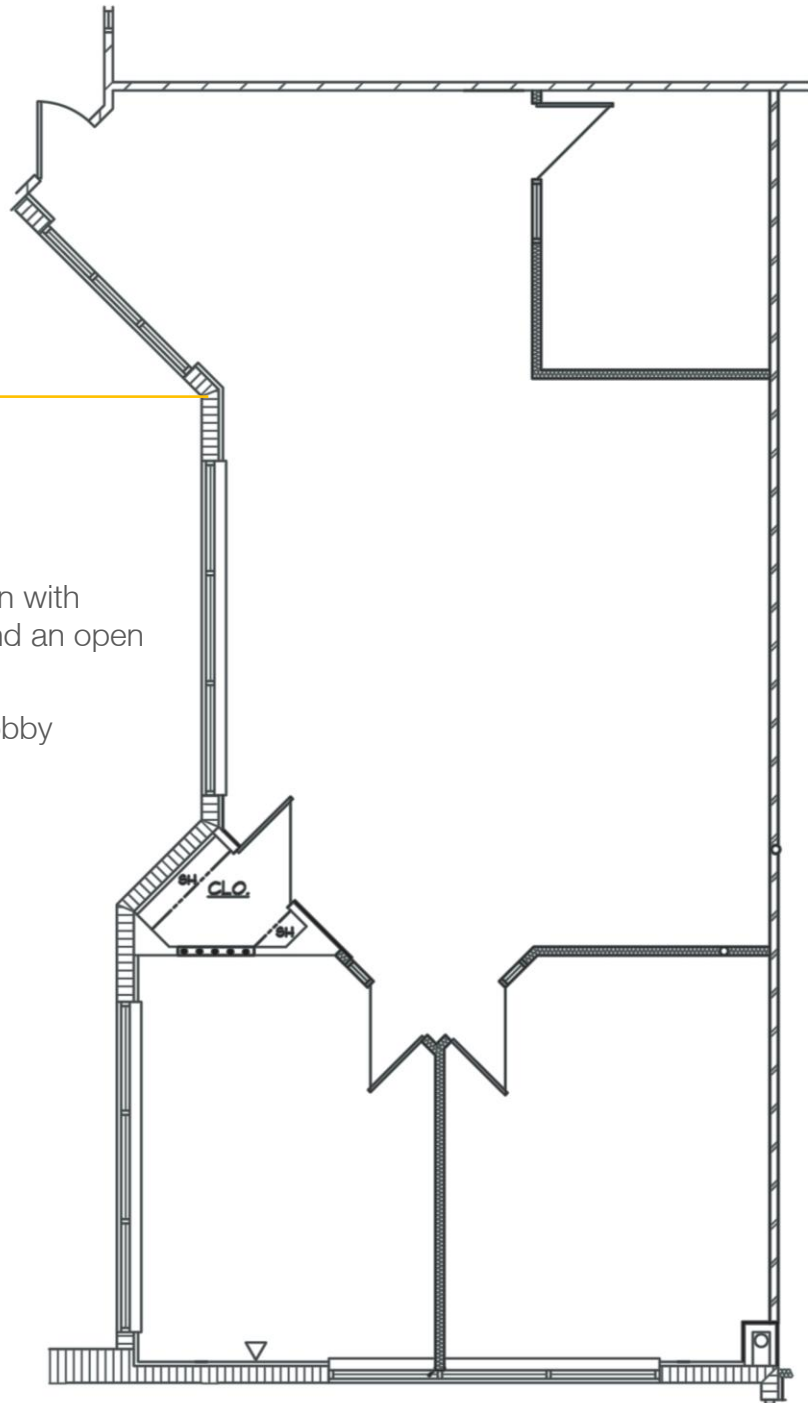
**FOR LEASE: MIZNER PLACE, WELLINGTON, FL**

## Fantastic Workspace in an Equestrian Paradise

### Suite 200

±1,512 SF

- Efficient floor plan with private offices and an open work area
- Direct elevator lobby exposure



\*Not to scale. Subject to error.

**LET'S SCHEDULE YOUR TOUR TODAY!**

**561 471 8000**