

# FOR LEASE

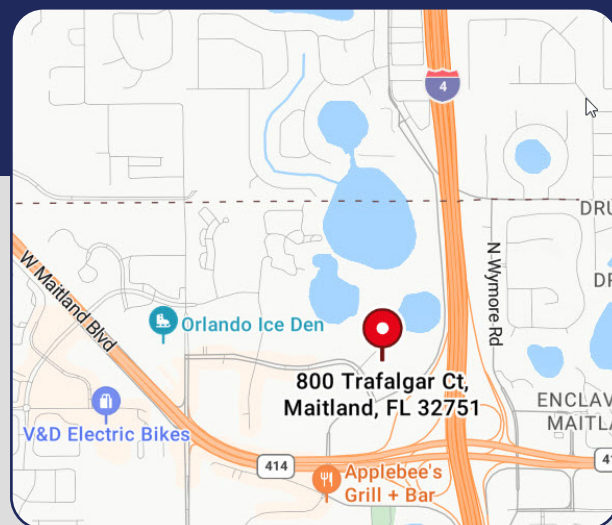


## OFFICE SPACE

800 Trafalgar Court, Maitland, FL 32751

### 3,670 - 4,200 SF AVAILABLE

- > Divisible space in a corner location on the 3rd Floor
- > Large training room and meeting room (50' x 36') available upon request
- > Multiple break rooms and covered exterior break area
- > Street facing marquee signage available
- > On-site management
- > After-hours access
- > Excellent parking includes covered area; property can accommodate a heavy parking demand
- > Easy to find location at the corner of Maitland Center Parkway and Lake Destiny Drive
- > **\$20.50/SF, Full Service**



**Bill Bywater, CCIM**

D 407.206.5736

O 407.206.7300

bill@bywater.com

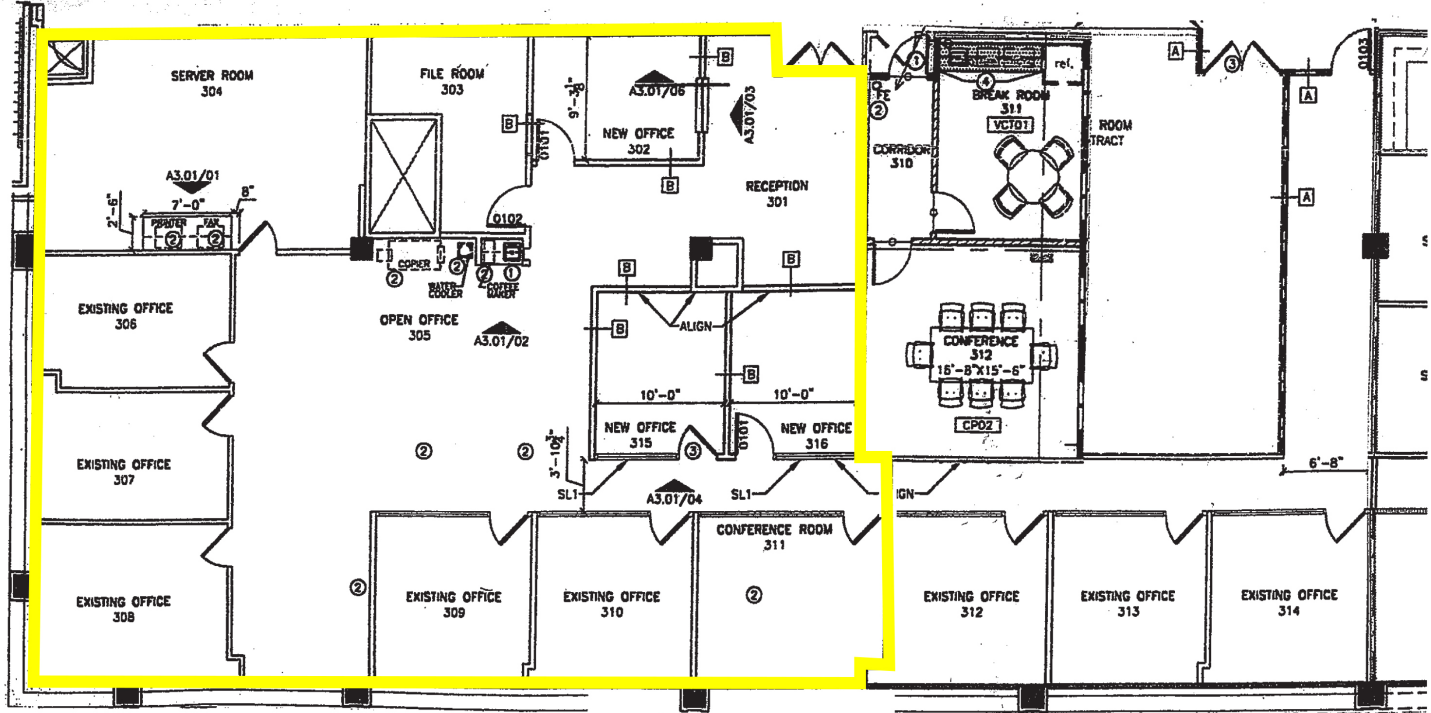


1209 Edgewater Drive  
Suite 100  
Orlando, FL 32804  
407.206.7300 Main  
www.bywater.com

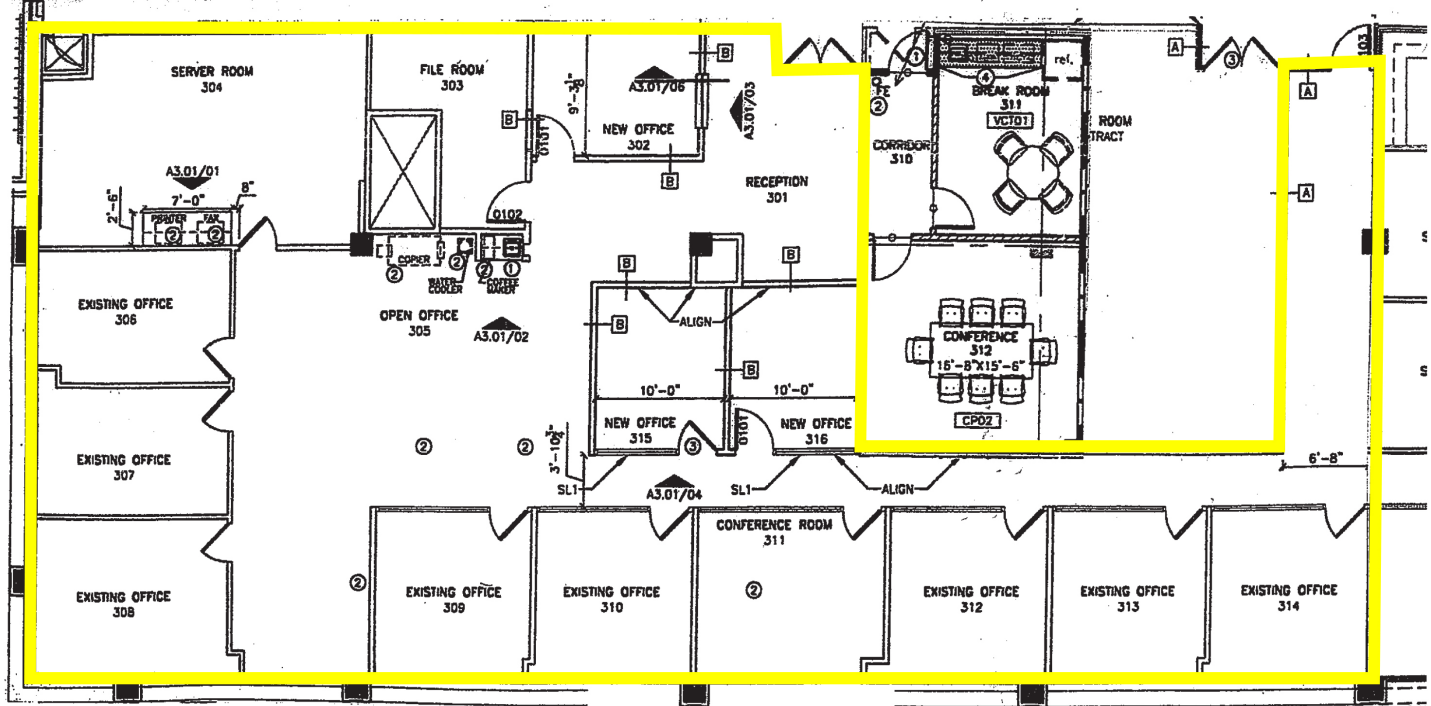
# OFFICE SPACE

800 Trafalgar Court, Maitland, FL 32751

3,670 SF Floor Plan



4,200 SF Floor Plan



1209 Edgewater Drive, Suite 100 | Orlando, FL 32804 | 407.206.7300 | [www.bywater.com](http://www.bywater.com)

The information contained herein was obtained from sources deemed reliable and is assumed to be correct. It is not guaranteed by The Bywater Company.

# OFFICE SPACE

800 Trafalgar Court, Maitland, FL 32751



1209 Edgewater Drive, Suite 100 | Orlando, FL 32804 | 407.206.7300 | [www.bywater.com](http://www.bywater.com)

The information contained herein was obtained from sources deemed reliable and is assumed to be correct. It is not guaranteed by The Bywater Company.