



For Sale
Commercial Property
 1.38 Acres | \$275,000 / Acre

South of Fox Lake Road & Hwy 405

Titusville, Florida 32780

Property Highlights

- Great opportunity - excellent commercial visibility
- 1.38± acre site in a high density residential area
- Signalized corner of Fox Lake Road and Hwy 405
- Frontage on Hwy 405
- Traffic counts: 18,000 AADT
- Less than a mile east of I-95
- 7 minutes to I-95 / Cheney Hwy interchange
- Adjacent 1± acre parcel to the north also available

Map data ©2026 Imagery ©2026 Airbus

DEMOGRAPHICS

Stats	Population	Avg. HH Income
5 Miles	59,442	\$81,917
10 Miles	102,117	\$90,242
15 Miles	141,886	\$96,798

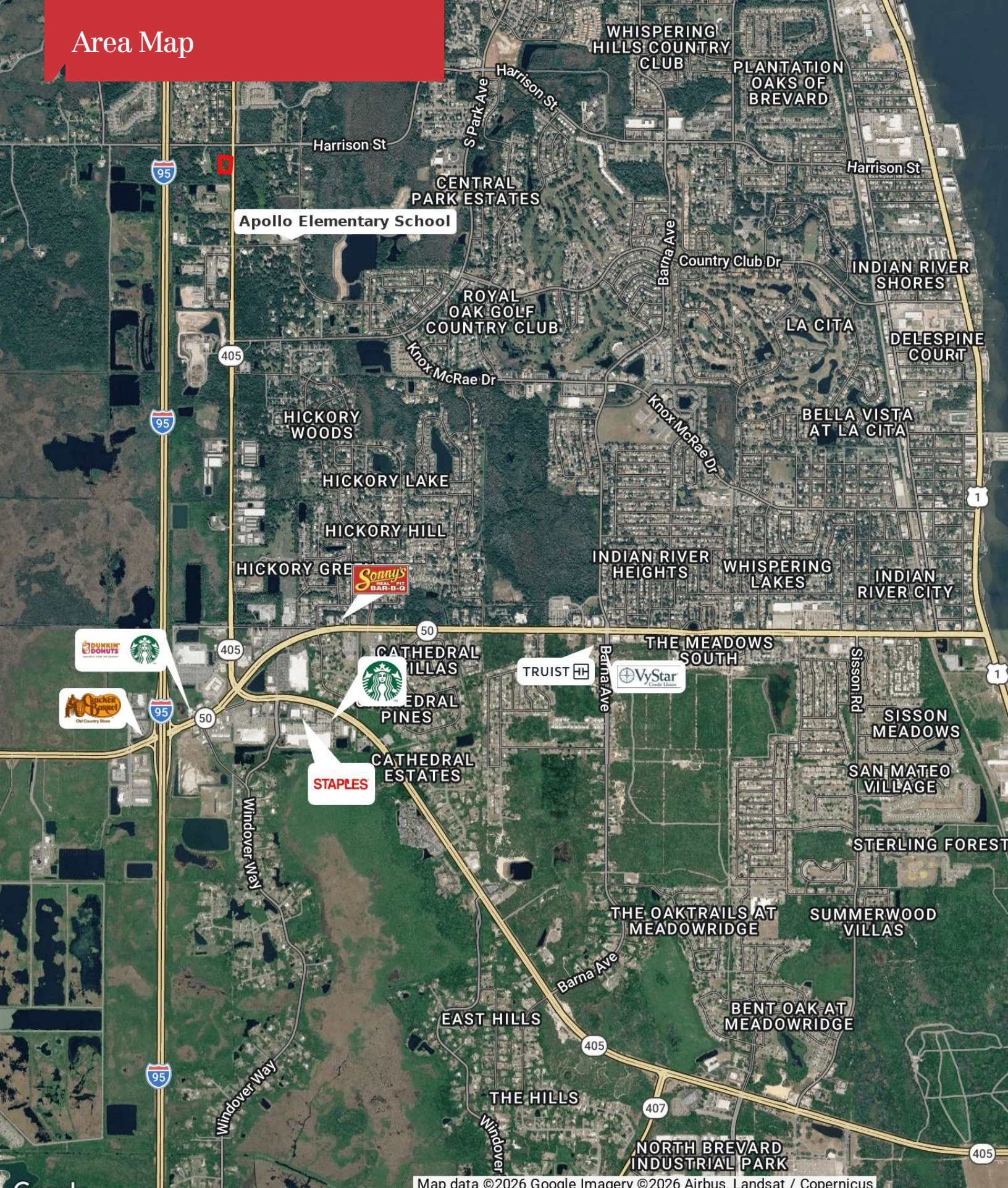


For more information

Brad Gifford

O: 386 506 0037
 bgifford@realvest.com

Area Map



Map data ©2026 Google Imagery ©2026 Airbus. Landsat / Copernicus.

Property Photos



Location Maps

