



# 100% OCCUPIED CLASS “A” INVESTMENT OPPORTUNITY

Building 7 within Cross Ridge Exchange

## OFFERING MEMORANDUM

First Capital Property Group, as an exclusive broker, is pleased to offer the opportunity to acquire the fully-leased retail building located within the new Cross Ridge Exchange development in Clermont, FL.



**FIRST CAPITAL**  
**Property Group**  
*Commercial Real Estate Services*





# TABLE OF CONTENTS

## PROPERTY OVERVIEW

Executive Summary.....	3
Property Description.....	4
Tenants.....	5-6
Rent Roll.....	7
Lease Abstract.....	8-9
Location Overview.....	10
Demographic Profile.....	11
Site Map.....	12
The Neighborhood.....	13

## MARKET HIGHLIGHTS

Clermont, Florida Highlights.....	14-17
-----------------------------------	-------





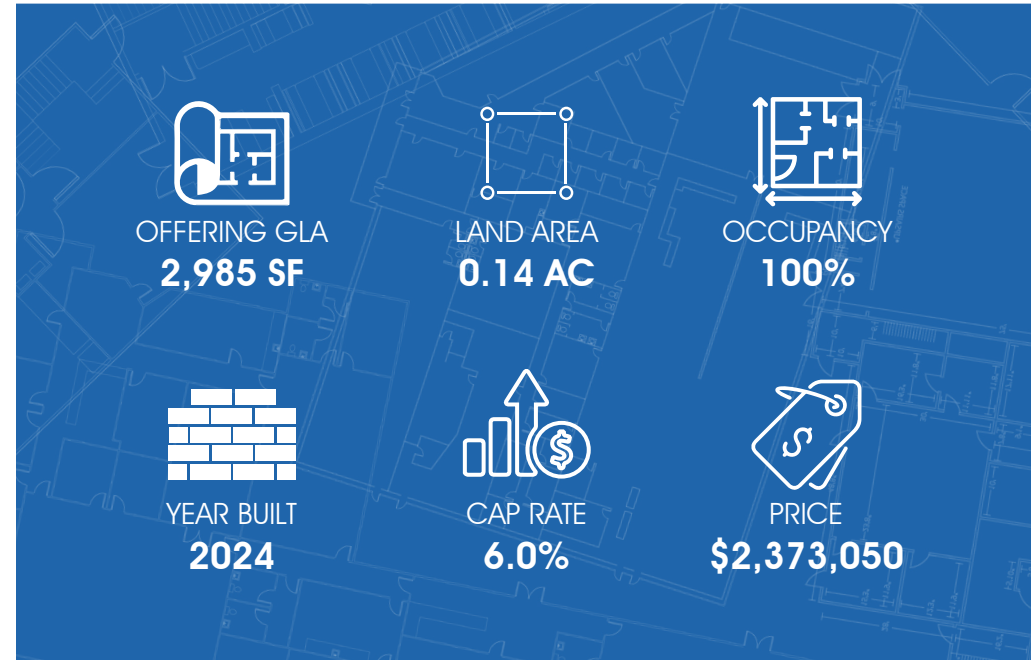
## EXECUTIVE SUMMARY

First Capital Property Group is pleased to present 2605 South Hwy 27 Clermont FL 34711; a premier, 100% occupied retail property located within the vibrant Cross Ridge Exchange development.

This asset is anchored by **Brooklyn Water Bagel**, a nationally recognized fast-causal bagel and café franchisor known for its proprietary water filtration process, authentic New York-style bagels, and strong brand loyalty with all-day breakfast appeal. The neighboring tenant is **Superiority Barbershop**, a hair-style destination with a loyal customer base, having another location in South Miami Heights Florida. Both Brooklyn Water Bagel's and Superiority Barbershop's long-term leases at this location reflect their strategic commitment to the growing Clermont market, offering investors stable, creditworthy income from a two-tenant, net-leased facility.

Positioned within the 17-building Cross Ridge Exchange, this property benefits from over 500 feet of direct frontage and excellent visibility from both US Highway 27 and Cross Ridge Road. With over 46,500 AADT, the location is ideally situated to attract strong and consistent traffic.

Strategically located between Walmart Supercenter and BJ's Wholesale Club, and less than one mile from Clermont's primary retail corridor, the property enjoys proximity to major national retailers and is just south of Clermont Landing, a 340,000 SF retail power center.



## HIGHLIGHTS

**New Construction** built in 2024 by Schmid Construction, voted "Best Builder/Contractor" for South Lake County

**High Average Income** of \$120,547 within 1 mile radius of property

**Rapidly Growing Submarket** with a projected annual growth rate 2.72% through 2028 within five miles of the Property.

**Clermont voted "Best City to Live in Central FL"** by Orlando Business Journal Readers Choice for 2017

**Largest City in Lake County** at a population of over 44,800 within the 19 square miles of city limits

**2nd Best State for Business** in the United States by Chief Executive Magazine (2021)

## PROPERTY DESCRIPTION

**Address:** 2605 US Highway 27  
Clermont, FL 34711

**County:** Lake County

**Zoning:** PUD

**Land Use Code:** 1610 - STRIP CENTER

**Parcel ID:** 32-22-26-2500-000-00700

**Land Size:** 6,150 SF / 0.14 acres

**Building Size:** ±2,985 SF

**Stories:** 1 Floor

**Year Built:** 2024

**Property Type:** Class "A" Retail Building

**Number of Suites:** 1 Suite

**Frontage:** ± 500 ft on US HWY 27

**Slab/Foundation:** Concrete Block Stucco

**Parking:** 524 Spaces Throughout Development

## PROPERTY SNAPSHOT

Brand new construction with concrete block within the highly desirable Cross Ridge Exchange mixed-use development. The building has two front double-doors, 3 back doors, and patio space in the rear.

Located within a property owners association, common area maintenance cost are shared throughout the association and professionally managed with licensed and insured vendors.



**TRAFFIC COUNT**  
**43,000 AADT**  
US Highway 27



**AVERAGE HOUSEHOLD**  
**INCOME**  
\$100,705  
(5 minute radius)



**EMPLOYMENT**  
**POPULATION**  
± 30,364  
(10 minute radius)



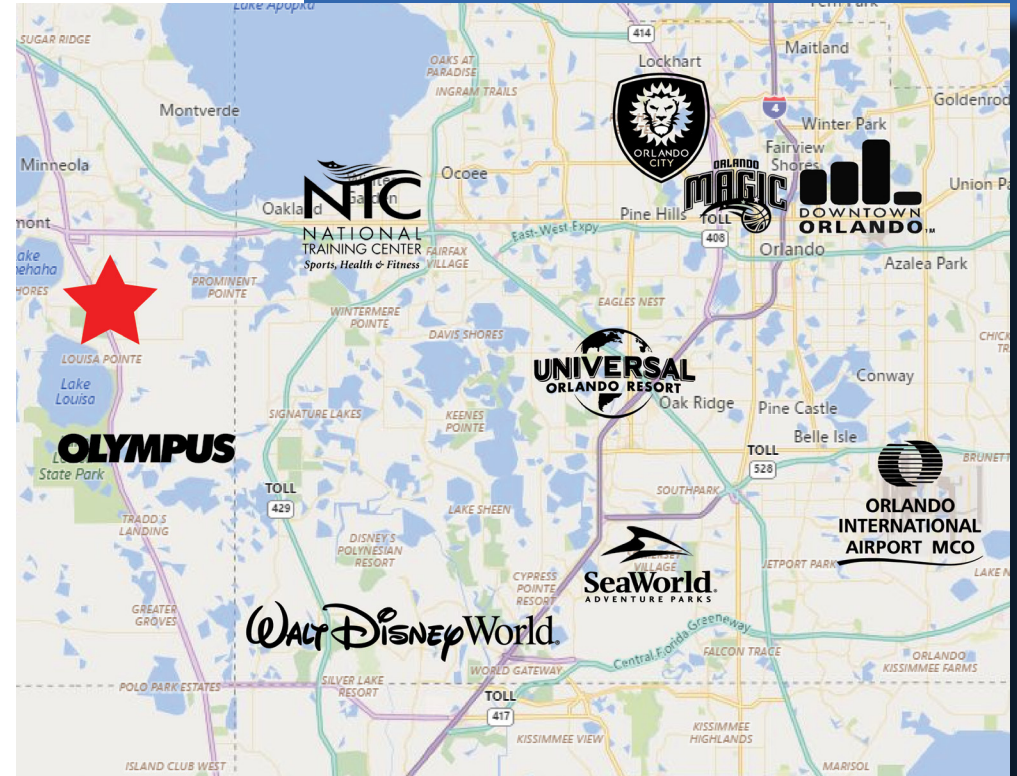
**DAYTIME**  
**POPULATION**  
± 61,811  
(10 minute radius)



# LOCATION OVERVIEW

## LOCATION HIGHLIGHTS

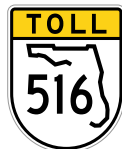
- **Prime Visibility & Accessibility:** Located along US Hwy 27 with over 46,500 AADT and 500+ feet of direct frontage, offering exceptional visibility and direct access from both US Highway 27 and Cross Ridge Road
- **Thriving Retail Corridor:** Positioned between Walmart Supercenter and BJ's Wholesale, less than a mile from Clermont's main retail corridor and just south of the 340,000 SF Clermont Landing retail power center
- **Dynamic Market Opportunity:** Situated in one of Central Florida's fastest-growing areas, Clermont, named the "Most Business-Friendly City in Central Florida" for smaller municipalities by WalletHub, providing a stable and high-demand investment environment



## DRIVE TIMES & TRAFFIC COUNTS



2 minutes  
(1.2 miles)



10 minutes  
(7.5 miles)



12 minutes  
(7.6 miles)



19 minutes  
(14.8 miles)



23 minutes  
(21 miles)



32 minutes  
(24.6 miles)

## Surrounding Businesses

2025	5 Mins	10 Mins	15 Mins
Retail Businesses	149	486	665
Food & Drink Businesses	66	180	223

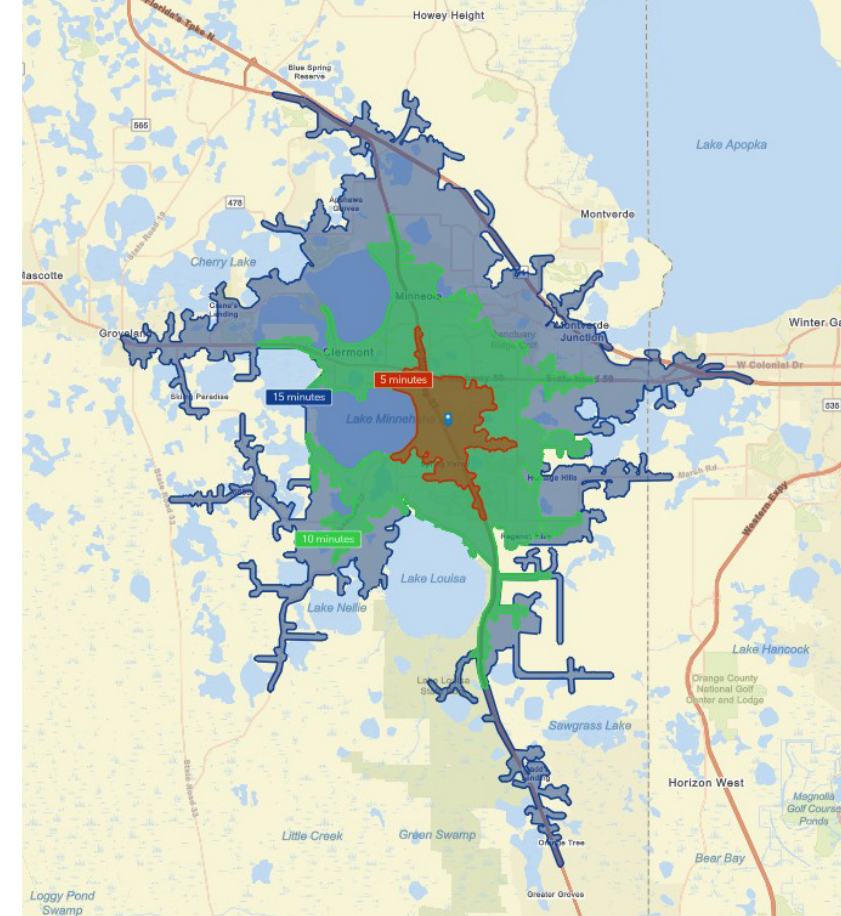
## Average Annual Daily Trips

2024	
Citrus Tower Park Blvd	14,900
US HWY 27	44,000



# DEMOGRAPHIC PROFILE

	5 MINS	10 MINS	15 MINS
TOTAL POPULATION	9,266	54,433	106,765
DAYTIME POPULATION	10,209	61,811	99,076
MEDIAN AGE	40.4	43.7	42.4
MALE POPULATION	49.0%	48.4%	48.6%
FEMALE POPULATION	51.0%	51.6%	51.4%
TOTAL HOUSEHOLDS	3,602	21,133	40,215
AVERAGE # OF PERSONS PER HH	2.76	3.00	3.04
AVERAGE HH INCOME	\$100,705	\$104,846	\$113,380
AVERAGE HOUSE VALUE	\$426,658	\$444,542	\$466,282
TOTAL BUSINESSES	652	2,527	3,469
TOTAL EMPLOYEES	6,742	30,364	37,329





# SITE MAP



Walmart 



# THE NEIGHBORHOOD





# WEST ORLANDO MARKET: CLERMONT

Clermont is the **largest city in Lake County** at a population of over 44,800 within the 19 square miles of city limits. Located just 20 minutes west of Orlando near major transportation networks, the **picturesque hills and pristine lakes** draw a diverse demographic.

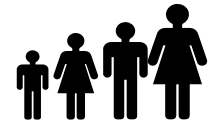
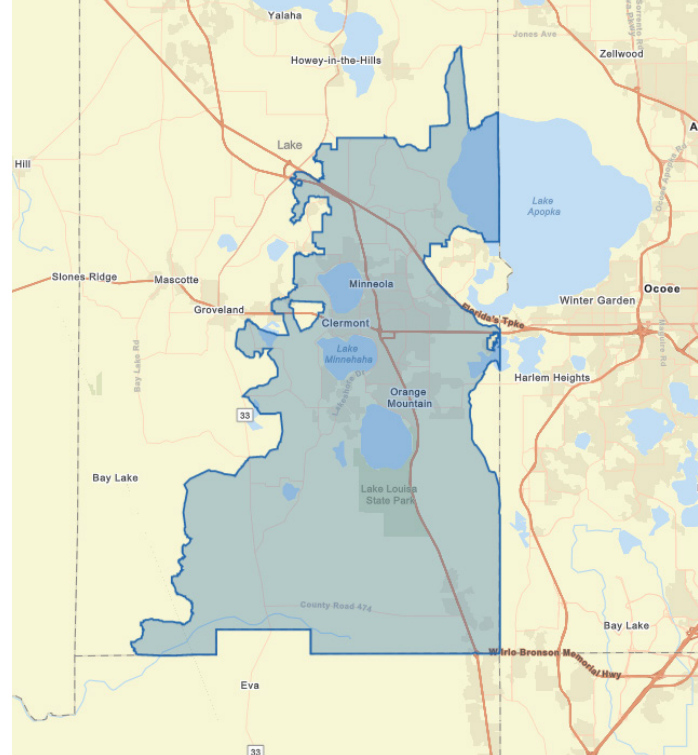
From those who want to be close to Orlando for work, enjoy being close to the **theme parks**, desire an abundance of **outdoor activity** options, want world-class **healthcare** options or top-notch **training opportunities**, Clermont has something for everyone.

Over 23 parks, 3.5 miles of paved trails, 4 piers, a boardwalk, splash pad and boat ramps are some of the **recreation programs, sports and activities** available in the Clermont area.

## GROWTH

The area's **low cost of living** coupled with the area's focus on **innovation**, including but not limited to the 18 miles of optical fiber and cutting edge healthcare service options, continues to drive an influx of people moving to the region.

**Advent Health invested \$35 million** into Clermont with their first facility in the region. Located at SR 50 and Citrus Tower Blvd, the campus includes a 19,000 SF ER with 24 patient rooms and a 36,000 SF health park with primary and specialty care practices. The campus helps to **fill the need for specialty physicians** in the area and provide a seamless experience with single check-in, single bill, online forms and overall more convenient experience.



**4.01% ANNUAL  
POPULATION  
INCREASE  
SINCE 2010  
(ESRI)**



**2,093 HOUSING UNITS  
UNDER CONSTRUCTION  
IN 2018/2019  
CLERMONTFL.GOV**

## DEMOGRAPHICS

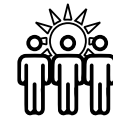
### Population



**POPULATION**  
± 136,290



**PROJECTED  
ANNUAL GROWTH**  
2.78%



**DAYTIME  
POPULATION**  
± 116,417



**MEDIAN AGE**  
± 41.3

### Income



**AVERAGE  
HOUSEHOLD INCOME**  
\$109,346



**AVERAGE  
DISPOSABLE INCOME**  
\$86,977



**AVERAGE NET  
WORTH**  
\$1,125,104

### Employment



**EMPLOYEES**  
40,276

### Housing

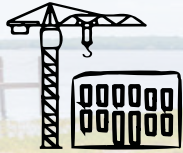


**HOUSEHOLDS**  
51,514



**AVERAGE HOME VALUE**  
\$462,063

# WEST ORLANDO MARKET: CLERMONT



± \$20,000,000  
INVESTMENT INTO  
DOWNTOWN  
MASTER-PLAN



± 100 EVENTS  
DOWNTOWN  
ANNUALLY



"TOP 25 PLACES  
TO RETIRE"  
BY MONEY MAGAZINE  
& FORBES (2016)



"MOST BUSINESS  
FRIENDLY CITY IN  
CENTRAL FL"  
BY WALLET HUB



"BEST CITY TO LIVE  
IN CENTRAL FL"  
ORLANDO BUSINESS JOURNAL  
READERS CHOICE, 2017



TOP 15 BEST LAKE  
TOWNS IN THE U.S.  
TRAVEL & LEISURE,  
2021

## DOWNTOWN MASTER PLAN

The City of Clermont is **investing over \$20 million into the award-winning Master Plan** to redevelop the Downtown core which includes over 32 projects. The Master Plan offers insight on how to keep the community growing and continue to maintain Clermont as one of the nations **top places to live and train for the world's elite athletes** tagging Clermont as the "Choice of Champions."



## CHOICE OF CHAMPIONS

Clermont is home to the National Training Center which draws athletes from around the world. In the 2020 Tokyo Summer Olympics, at least **eighteen athletes trained in Clermont** and represented ten different countries across various track and field events. These Olympians earned 8 medals.

If Lake County were an independent country, it would have finished in the top three in the final medal count at the 2016 Summer Olympics in Rio de Janeiro. Clermont is also home to the Special Olympics Florida Headquarters, and Sommer Sports, the oldest American owned multi-sport event company. A **10-mile clay loop** also attracts Olympians and residents alike with its scenic views and rolling hills.





# WEST ORLANDO MARKET: LAKE COUNTY

## REAL FLORIDA. REAL CLOSE.

Located 35 minutes to the West of Downtown Orlando, Lake County is 'real close' to all of the Orlando MSA attractions while providing over **1,400 named bodies of water with 10 miles of designated blueways, 950 acres of park land, over 14 miles of paved trails**, dozens of golf courses, unique-to-Florida hills and lake views throughout the county.

Lake County is comprised of four sections: Forest Gateway, Northwest Lake, Golden Triangle and South Lake. South Lake, said to be **"a training ground for triathlons and a designated "Runner Friendly Community," bustling South Lake's hills make it a hot spot for athletes"** is within the West Orlando Market and includes Wellness Way and Olympus.

## UNIQUE ADVENTURES

**Sugarloaf Mountain**, the highest point in peninsular Florida is located in South Lake County. This provides unique-to-Florida terrain for runners and bikers, and unique views over the area from the 312 feet above sea level summit.

Lake County has many **adventure options** including: ecotourism, fishing, sea planes, hot air balloons, off-road courses, agritourism (wineries, u-pick farms, and citrus groves), art & museums, antiques & shopping, golfing, equestrian, theatre, spas and more.

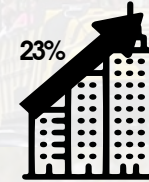
## BUSINESS FRIENDLY

Lake County is dedicated to being a **premiere destination in Florida for business and industry**. Elevate Lake, the Department of Economic Development, has created an extensive business support system that is aimed at improving business retention and expansion through **assisting businesses in achieving their goals**.

The dedication to ensuring that businesses in Lake County also have a large workforce that is well-trained and highly-skilled drove Elevate Lake to establish a **well built-out partnership program with local training facilities, educational institutions and regional CareerSource** Central Florida representatives. Lake County offers numerous, attractive incentives for new businesses.



**16.2%**  
INCREASE IN JOBS  
IN LAKE COUNTY  
(2013 - 2018)



**TOP 3**  
FASTEST GROWING  
COUNTIES IN FL (23%  
GROWTH BY 2030)



**5TH**  
BEST COUNTY FOR  
INCOME INVESTMENT



Lake County's **population is expected to grow 28%** by 2030, according to the University of Florida Bureau of Economic and Business Research.



Lake County has **14 municipalities** account for over 50% of county's population.



Located 60 miles from **4 international airports** or executive airports and within 1.5 hr drive of **3 seaports**.



More than **500,000 students** enrolled in higher education within 100 mile radius of Lake County.



Lake County's **millage rate is one of the lowest** in the region making it appealing to existing and prospective business owners.



# SURROUNDING MARKET INFORMATION



**West Orlando Market - Florida**  
WINDERMERE, OCCLEE, WHITE GARDEN, CLERMONT, LAKE COUNTY

First Capital Property Group / CORFAC International, is a full-service commercial real estate company serving all of Central Florida from the Gulf Coast to the Space Coast. Since 1995, FCPG has specialized in acquisition, disposition, leasing, property management & consultation for commercial owners & associations.



**LEARN MORE ABOUT THE SURROUNDING MARKET IN OUR “WHY WEST ORLANDO” PACKET**

[www.FCPG.com/Why-West-Orlando](http://www.FCPG.com/Why-West-Orlando)



**ORLANDO, FLORIDA**  
MARKET HIGHLIGHTS

First Capital Property Group / CORFAC International, is a full-service commercial real estate company serving all of Central Florida from the Gulf Coast to the Space Coast. Since 1995, FCPG has specialized in acquisition, disposition, leasing & property management & consultation for commercial owners & associations.



**LEARN MORE ABOUT THE ORLANDO MARKET IN OUR “WHY ORLANDO” PACKET**

[www.FCPG.com/WhyOrlando](http://www.FCPG.com/WhyOrlando)



**Seminole County - Florida**

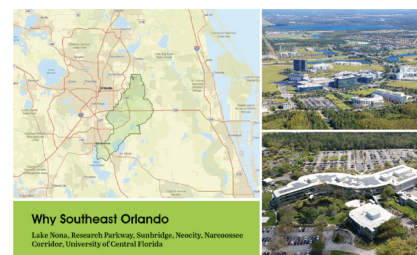
ALAMONTE SPRINGS, CASSELBERRY, LAKE MARY, LONGWOOD, OVIEDO, SANFORD, WINTER SPRINGS

First Capital Property Group / CORFAC International, is a full-service commercial real estate company serving all of Central Florida from the Gulf Coast to the Space Coast. Since 1995, FCPG has specialized in acquisition, disposition, leasing, property management & consultation for commercial owners & associations.



**LEARN ABOUT SEMINOLE COUNTY MARKET IN OUR “WHY SEMINOLE COUNTY” PACKET**

[www.FCPG.com/Why-Seminole-County](http://www.FCPG.com/Why-Seminole-County)



**Why Southeast Orlando**

Lake Nona, Research Parkway, Sunbridge, Novecity, Narcoossee Corridor, University of Central Florida

First Capital Property Group / CORFAC International, is a full-service commercial real estate company serving all of Central Florida from the Gulf Coast to the Space Coast. Since 1995, FCPG has specialized in acquisition, disposition, leasing, property management & consultation for commercial owners & associations.



**LEARN MORE ABOUT THE SURROUNDING MARKET IN OUR “WHY SOUTHEAST ORLANDO” PACKET**

[www.FCPG.com/Why-Southeast-Orlando](http://www.FCPG.com/Why-Southeast-Orlando)





**ASKING PRICE: \$2,373,050**  
**CAP RATE: 6.0%**



**Trey Gravenstein**  
*Vice President of  
 Brokerage Services*  
 407.872.0177 ext. 119  
 Trey@FCPG.com



**Michael Castrilli**  
*Vice President of  
 Brokerage Services*  
 407.872.0177 ext. 133  
 Michael@FCPG.com



**FIRST CAPITAL**  
**Property Group**  
*Commercial Real Estate Services*

**CORFAC**  
**INTERNATIONAL**  
*Affiliate Firm*  
LOCALLY OWNED. GLOBALLY CONNECTED.

615 E. Colonial Dr. Orlando, FL | [www.FCPG.com](http://www.FCPG.com)

This Offering Memorandum contains select information pertaining to the business and affairs of the above referenced Property. It has been prepared by First Capital Property Group (FCPG). This Offering Memorandum may not be all-inclusive or contain all of the information a prospective purchaser may desire. The information contained in this Offering Memorandum is confidential and furnished solely for the purpose of a review by a prospective purchaser of the Property. It is not to be used for any other purpose or made available to any other person without the written consent of Seller and FCPG. The material is based in part upon information supplied by the Seller and in part upon financial information obtained by FCPG from sources it deems reliable. Owner, nor their officers, employees, or agents makes any representation or warranty, express or implied, as to the accuracy or completeness or this Offering Memorandum or any of its contents and no legal liability is assumed or shall be implied with respect thereto. Prospective purchasers should make their own projections and form their own conclusions without reliance upon the material contained herein and conduct their own due diligence.