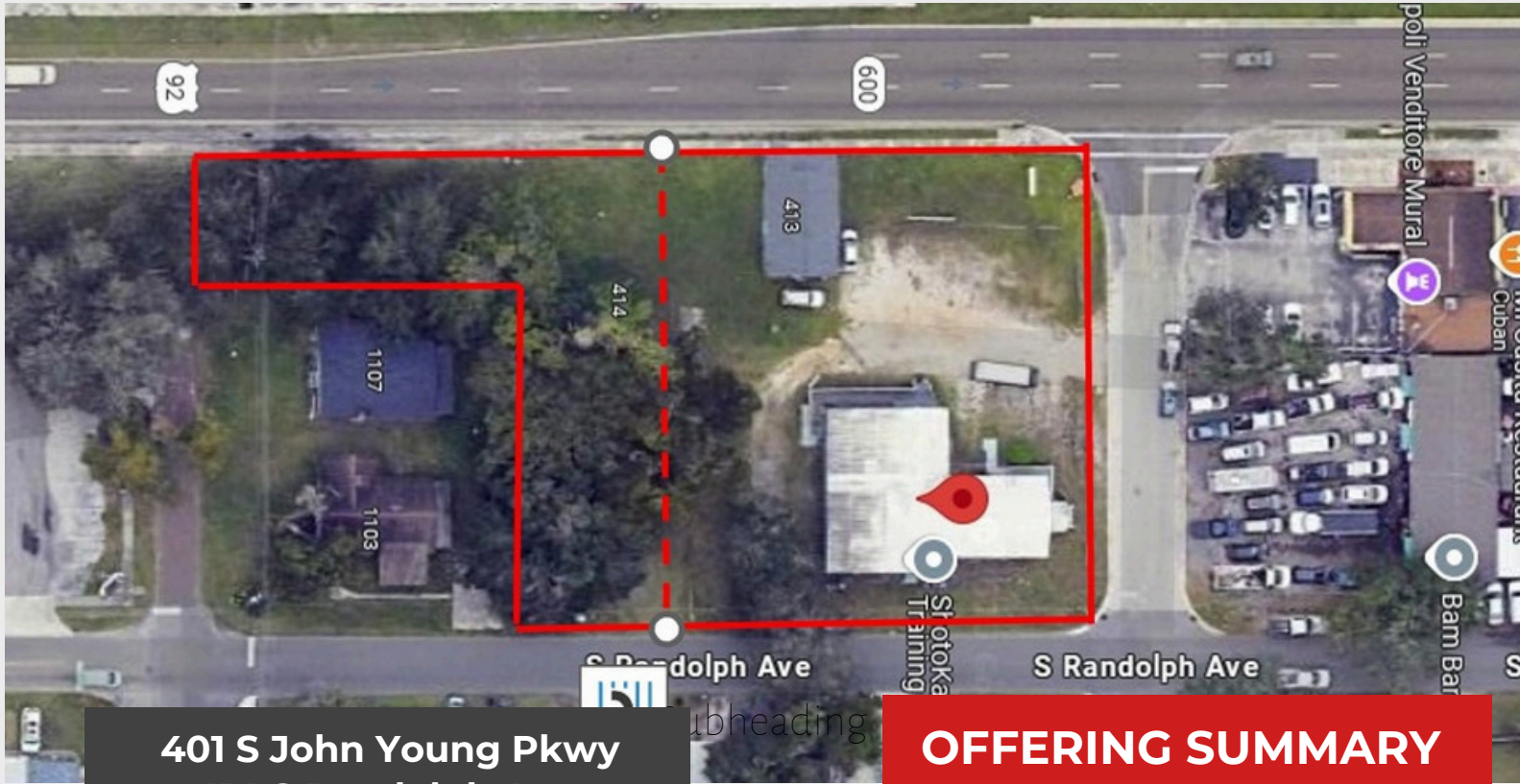


GREAT LOCATION FOR REDEVELOPMENT PROPERTY FOR SALE

Kissimmee, FL



**401 S John Young Pkwy
414 S Randolph Ave.
413 S John Young Pkwy
KISSIMMEE, FL**

OFFERING SUMMARY

4,596 total SF/ .82 acres

\$1,250,000

Property Highlights

- Centrally Located
- High Traffic Count
- Next to Major Road
- Great Redevelopment Opportunity
- Zoned T5-U
- Multiple Parcels (Retail and Land)
- Parcel ID: 282529192000220010 and 282529192000220020
- Located in fast growing Osceola County

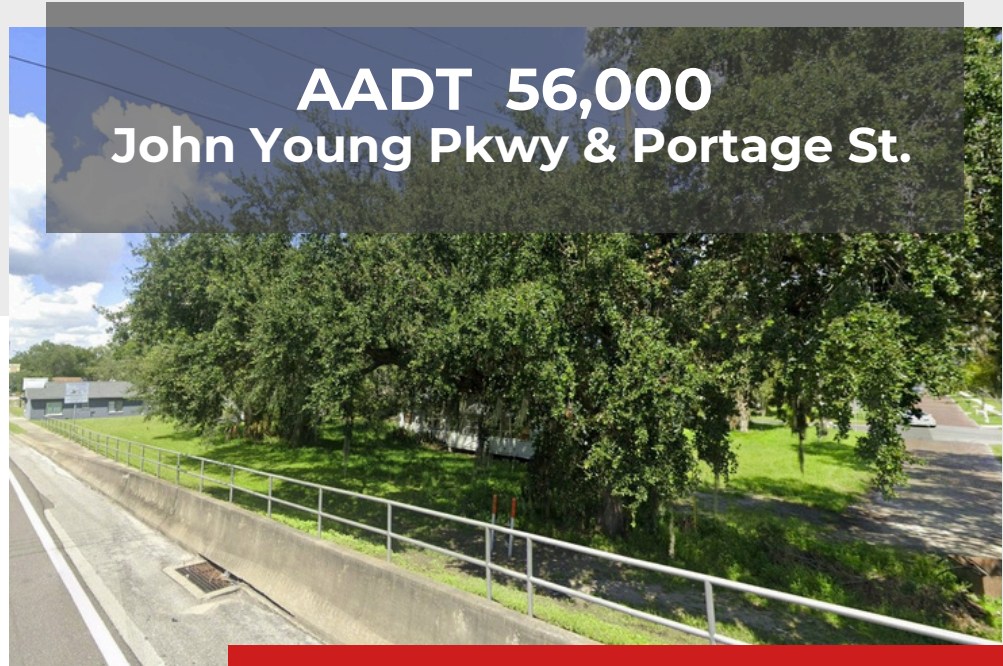
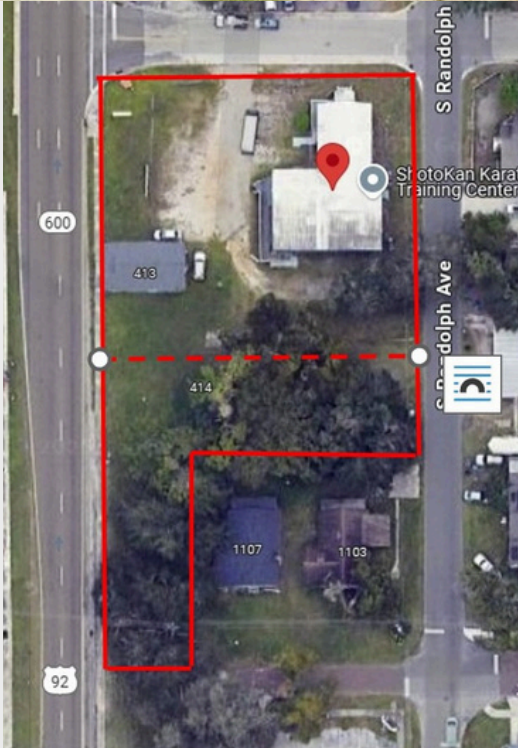
DEMOGRAPHICS

2024 Summary

Radius	Population	Average HH Income
1 mile	6,676	\$63,764
3 miles	73,014	\$67,626
5 miles	189,597	\$76,159

GREAT LOCATION FOR REDEVELOPMENT PROPERTY FOR SALE

Kissimmee, FL



AADT 56,000
John Young Pkwy & Portage St.

401 S John Young Pkwy
414 S Randolph Ave.
413 S John Young Pkwy
KISSIMMEE, FL

OFFERING SUMMARY

4,596 total SF/ .82 acres

\$1,250,000