



**2540 Midpark Drive  
Montgomery, AL 36109**

**FOR LEASE**

<b>Lease Price</b>	\$7.00 S.F.(NNN)
<b>Building Area</b>	+/- 14,040 S.F.
<b>Land Area</b>	+/- 1.42 Acres
<b>Loading Docks</b>	2 Grade Level, 1 Dock with Leveler
<b>Zoning</b>	M-1 (Light Industrial)
<b>Best Use</b>	Distribution/Service Business
<b>Visibility</b>	Good
<b>Possession</b>	Immediate
<b>Listing Type</b>	Exclusive

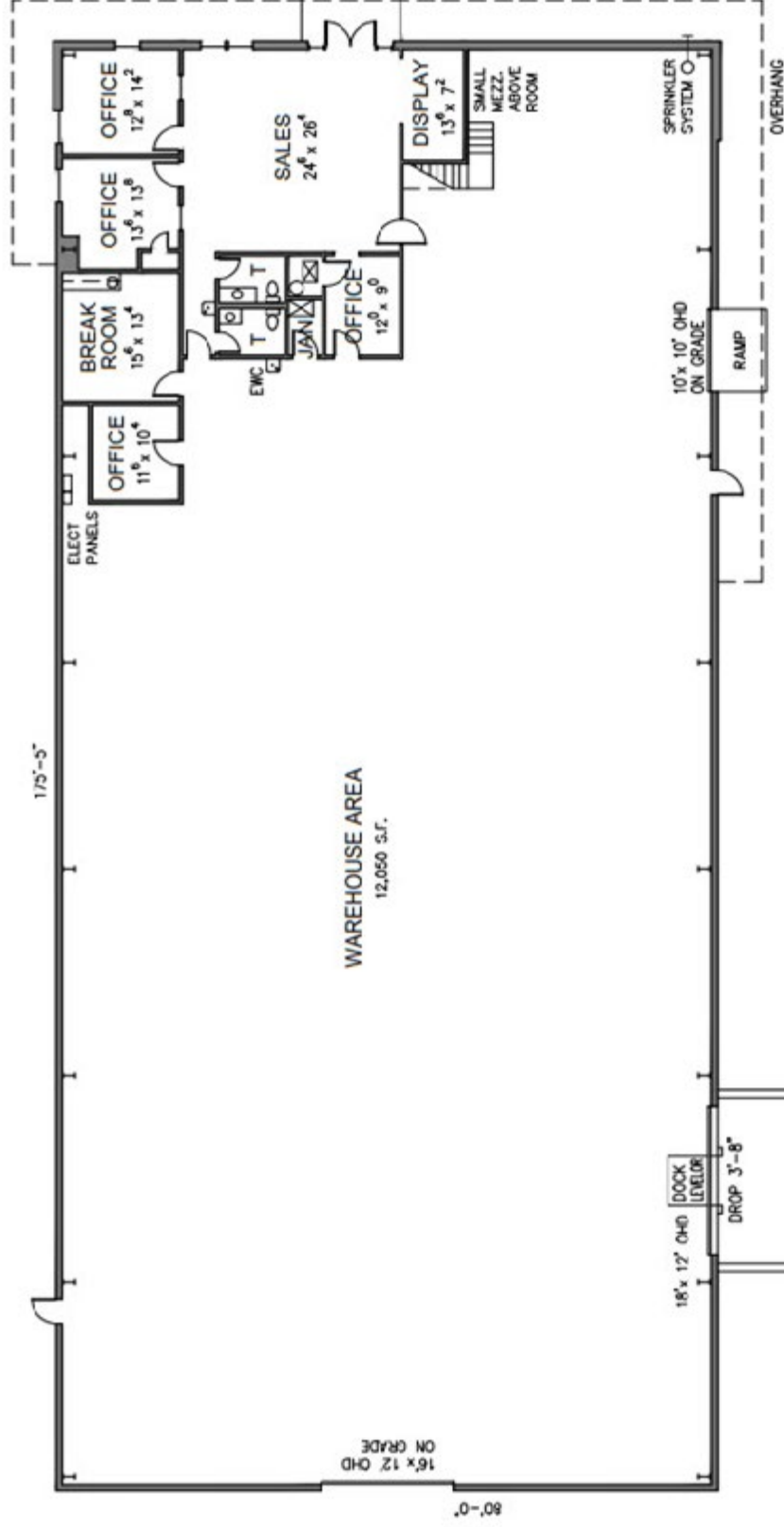
Excellent office/warehouse building with grade-level and dock-high loading doors. Located in Gunter Industrial Park. Contact Lee Meriwether, CCIM, for more information at (334) 398-1808.



**Lee W. Meriwether, CCIM**  
John Stanley & Associates, Inc.  
4747 Woodmere Blvd. ■ Montgomery, AL 36106  
(334) 271-2475 voice ■ (334) 398-1808 cell  
(334) 271-2421 fax  
[imeriwether@johnstanleyassociates.com](mailto:imeriwether@johnstanleyassociates.com)  
[www.johnstanleyassociates.com](http://www.johnstanleyassociates.com)



7/21/2025



### Building Data:

Gross Building Area	- 14,040 S.F.
Overhang Covered	- 840 S.F.
Office / Admin.	- 1,990 S.F.
Warehouse	- 12,050 S.F.

### Property Address:

2540 Midpark Drive  
Montgomery, Alabama





