



COMMERCIAL REAL ESTATE



2536 Midpark Drive  
Montgomery, AL 36109

FOR LEASE

<b>Lease Price</b>	\$8.00 S.F.(NNN)
<b>Building Area</b>	+/- 6,000 S.F.
<b>Land Area</b>	+/- 1.28 Acres
<b>Loading Docks</b>	2 Dock High, 1 Grade Level
<b>Zoning</b>	M-1 (Light Industrial)
<b>Best Use</b>	Office/Warehouse/Distribution/Service
<b>Visibility</b>	Good
<b>Possession</b>	Immediate
<b>Listing Type</b>	Exclusive

Excellent office/warehouse building with grade-level and dock-high loading doors. Located in Gunter Industrial Park. Contact Lee Meriwether, CCIM, for more information at (334) 398-1808.

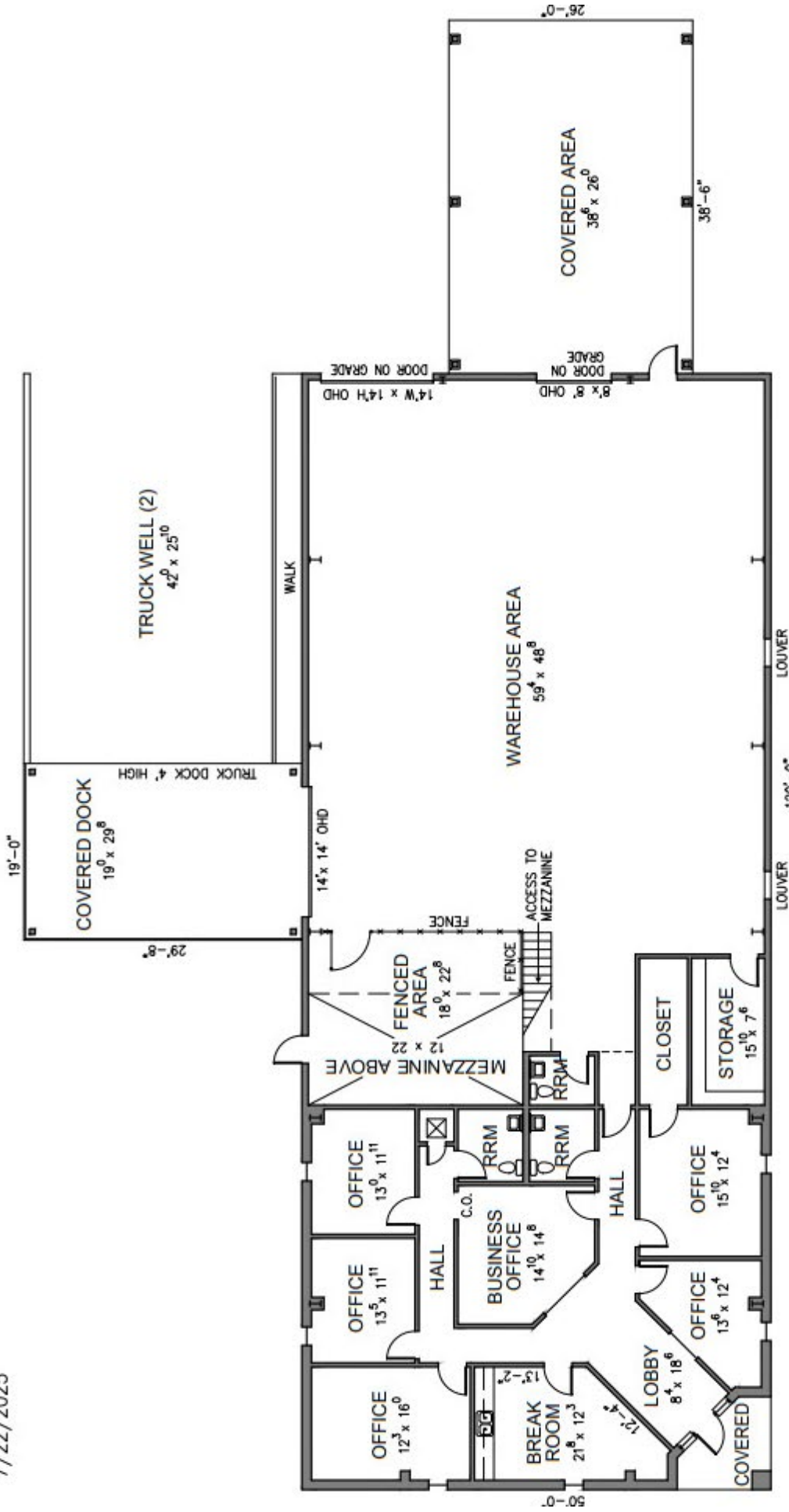


Lee W. Meriwether, CCIM  
John Stanley & Associates, Inc.  
4747 Woodmere Blvd. ■ Montgomery, AL 36106  
(334) 271-2475 voice ■ (334) 398-1808 cell  
(334) 271-2421 fax  
[imeriwether@johnstanleyassociates.com](mailto:imeriwether@johnstanleyassociates.com)  
[www.johnstanleyassociates.com](http://www.johnstanleyassociates.com)



All information is from sources deemed reliable, but no warranty is made as to the accuracy thereof and same is submitted subject to errors, omissions, change of price, or other conditions, such as prior sales or withdrawal without notice by John Stanley & Associates, Inc. or the Owner.

02/12/2026



### Building Data:

Gross Building Area	-	6,000 S.F.
Covered Dock	-	564 S.F.
Rear Side Covered	-	1,000 S.F.
Office / Admin.	-	2,812 S.F.
Warehouse	-	3,188 S.F.
Mezzanine	-	264 S.F.

Property Address:  
2536 Midpark Drive  
Montgomery, Alabama





