



RESIDENTIAL DEVELOPMENT

Fanning Bayou Dr, Southport, FL 32409

Contact: Jesse King
 Senior Sales & Leasing Associate

E: Jesse@FCPG.com
 P: 407.872.0177 ext.136

For Sale: \$5,000,000

Availability: ± 36.7 Acres

Parcel ID: 08426-030-000



AVERAGE HOME
 VALUE (5 MINS)
\$378,846

Waterfront development opportunity with R-2 zoning already in place, allowing for up to 89 units

Property offers deepwater access via Newman Bayou and North Bay, providing an ideal setting for waterfront living

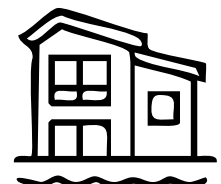
Conveniently located just 30 minutes from Panama City and Panama City Beach

Panama City Beach is experiencing unprecedented growth and recognition, forecasted by CNN's Money Magazine as the nation's fastest-growing city and ranked as one of the Top 3 Beaches in the U.S. by TripAdvisor

Readily available utilities and completed curb cuts for seamless roadway access



ZONING
R-2

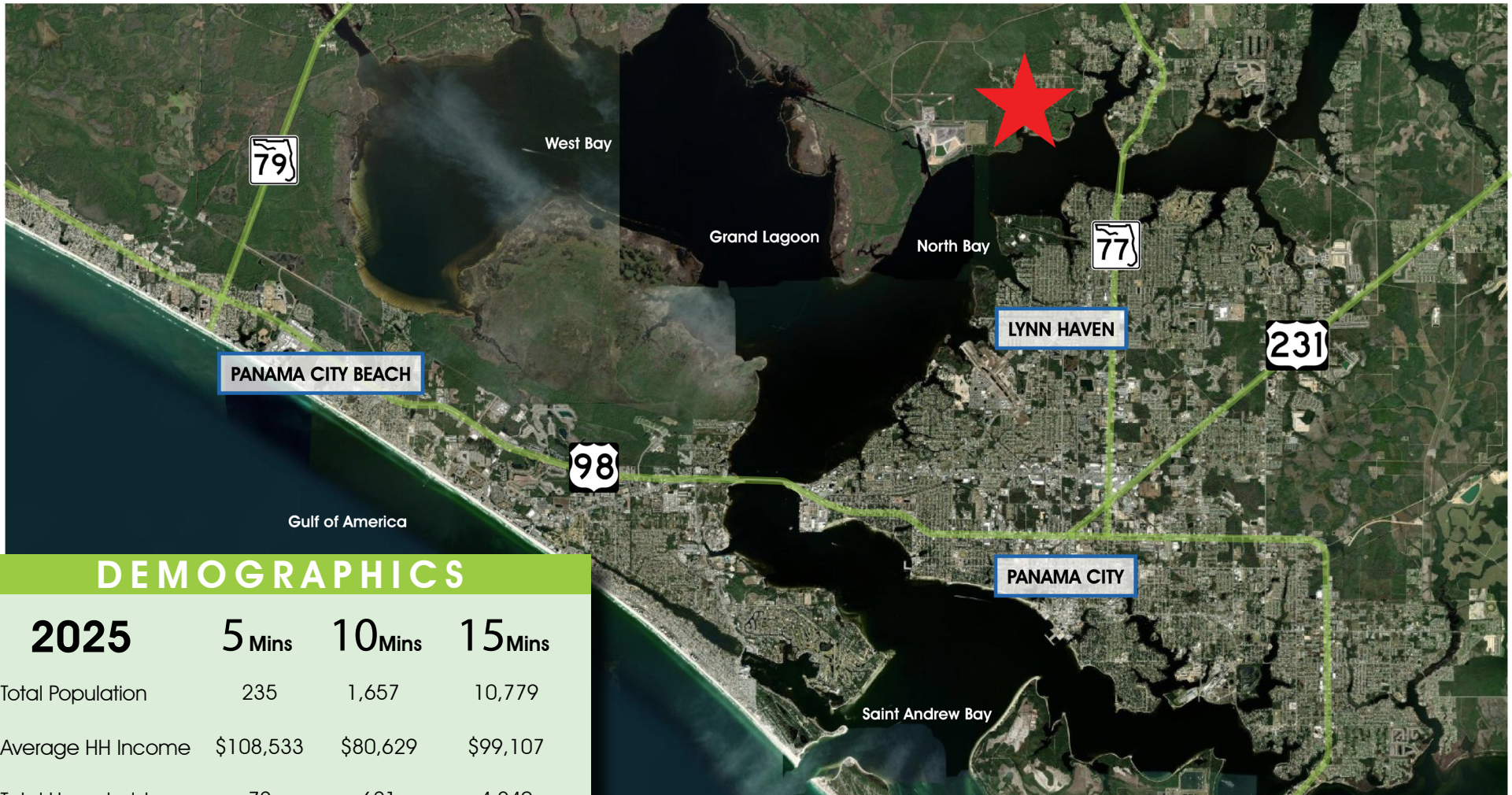


WATERFRONT
 DEVELOPMENT

■ 615 E. Colonial Dr., Orlando, FL 32803 ■ Phone: 407.872.0209 ■ www.FCPG.com ■

Information furnished regarding the subject property is believed to be accurate, but no guarantee or representation is made. References to square footage are approximate. This offering is subject to errors, omissions, prior sale or lease or withdrawal without notice. ©2026 First Capital Property Group, Licensed Real Estate Brokers & Managers.

NEIGHBORHOOD MAP



DEMOGRAPHICS

2025

5 Mins

10 Mins

15 Mins

Total Population	235	1,657	10,779
Average HH Income	\$108,533	\$80,629	\$99,107
Total Households	72	621	4,240

■ 615 E. Colonial Dr., Orlando, FL 32803 ■ Phone: 407.872.0209 ■ www.FCPG.com ■

Information furnished regarding the subject property is believed to be accurate, but no guarantee or representation is made. References to square footage are approximate. This offering is subject to errors, omissions, prior sale or lease or withdrawal without notice. ©2026 First Capital Property Group, Licensed Real Estate Brokers & Managers.



FIRST CAPITAL
Property Group

Commercial Real Estate Services

PANAMA CITY BEACH

A GROWING DESTINATION

Nestled along Florida's Emerald Coast, Panama City Beach is a vibrant coastal community known for its sugar-white sands, crystal-clear Gulf waters, and welcoming small-town charm. Originally a quiet fishing village, the area blossomed after World War II into one of the state's most sought-after beach destinations. Its rich history blends Southern hospitality with a relaxed coastal lifestyle, creating a place where generations have come to live, vacation, and invest.

Beyond its 27 miles of stunning shoreline, Panama City Beach continues to experience strong residential and commercial growth, fueled by tourism, redevelopment, and a thriving local economy. Families and retirees alike are drawn to its excellent schools, modern infrastructure, and outdoor amenities, from boating and fishing to dining, shopping, and festivals year-round. With continued investment in infrastructure and community development, Panama City Beach represents not just a beautiful place to live, but a prime opportunity for those looking to be part of the Gulf Coast's ongoing transformation.



0.93%
2024 - 2029
POPULATION GROWTH



43.1
MEDIAN AGE



80,708
TOTAL DAYTIME POPULATION



52,630
TOTAL EMPLOYEES



BUILDING FOR THE FUTURE

Panama City Beach is in the midst of a transformative phase, guided by the city's Community Redevelopment Agency initiatives that enhance connectivity, accessibility, and quality of life. Major investments are being made in pedestrian-friendly streetscapes, underground utilities, and improved stormwater systems along the Front Beach Road corridor, creating safer, more beautiful, and more efficient routes for residents and visitors alike. With projects like smart lighting, expanded beach access, and upgraded transportation infrastructure already underway, the city is actively shaping a modern, well-connected coastal community. These improvements not only strengthen property values but also ensure long-term sustainability, making Panama City Beach an exceptional place to invest, build, and call home.

