

For Sale
±2,610 SF
Flex/Warehouse Condo



Belvedere West Industrial Park

990 Stinson Way, Suite 213 & 214 | West Palm Beach, FL 33411

Property Features

- Two contiguous units located in a well-maintained, gated industrial park just west of the Turnpike
- Ownership will complete the existing buildout or deliver the space in shell condition to meet buyers needs
- Equipped with two (2) 10' x 12' electric roll-up doors and 100-amp, three-phase electrical
- Reserved on-site parking with quick access to nearby retail, dining, and everyday conveniences
- Minutes to SR-7/US-441 and the Western Communities, with easy connectivity to Palm Beach International Airport and West Palm Beach

Key Highlights



Dual 10' X 12' roll-up doors with 24' ceilings



Gated industrial condo park on Belvedere Road



Central Palm Beach County location just minutes from the Florida Turnpike

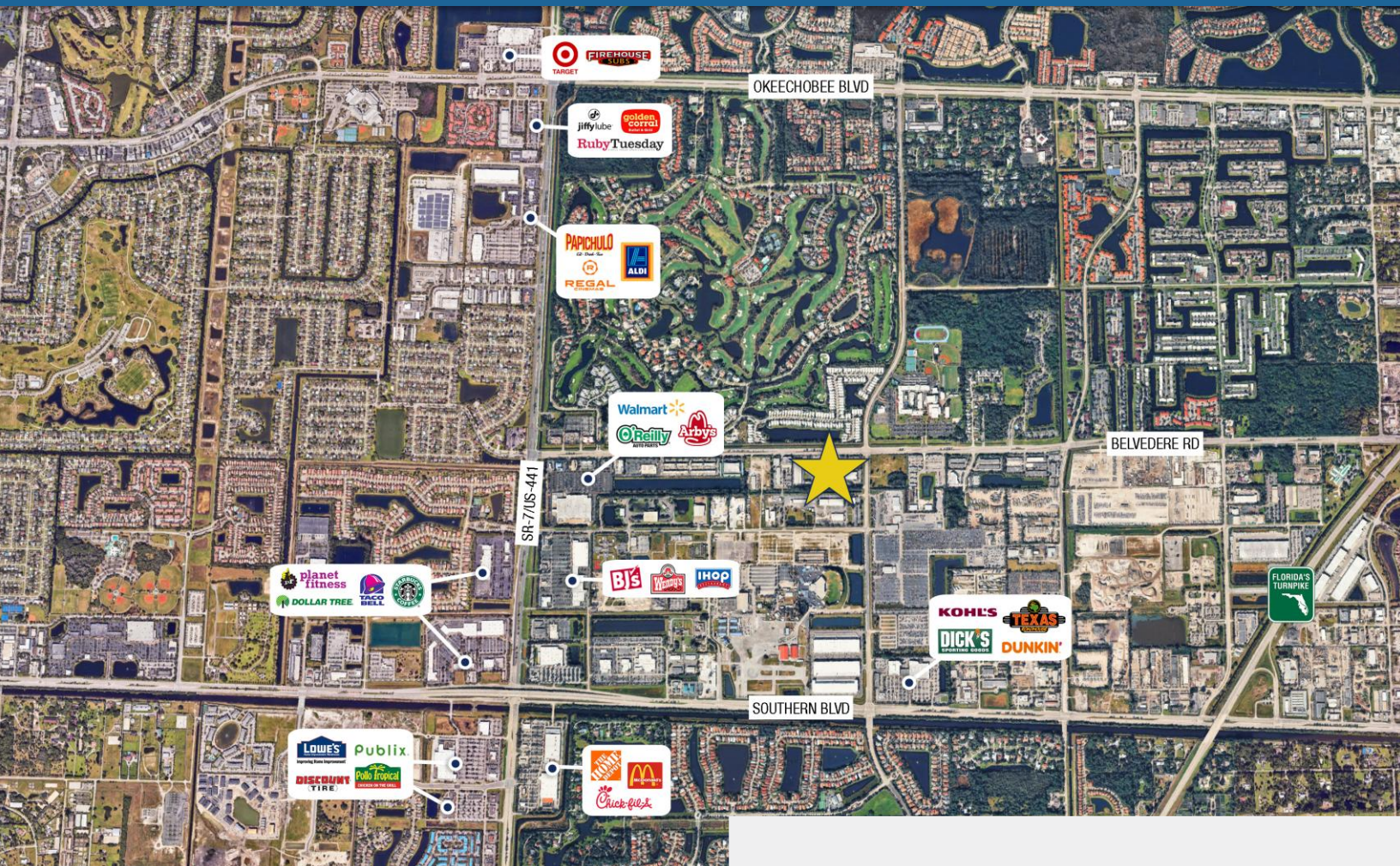
Patrick Almand, Associate
C: 443 370 8665 | palmand@mhcreal.com

Jason Sundook, SIOR, Principal
O: 561 471 8000 | jsundook@mhcreal.com



FOR SALE: BELVEDERE WEST INDUSTRIAL PARK, SUITES 213 & 214

Gated Industrial Condo Near the Florida Turnpike



Strong demographics paired with excellent access to major roadways and everyday conveniences.

Property: 990 Stinson Way, 213-214
West Palm Beach, FL 33411

Year Built: 2005

Use/Zoning: Warehouse/Condo
(IL) Light Industrial

Sales Price: \$850,000 (\$325.68/SF)

PID: 00-42-43-32-10-002-2130
Suite 213
00-42-43-32-10-002-2140
Suite 214

Demographics: 1 Mile 3 Miles 5 Miles

Total Population 7,412 65,788 227,775

Avg. HH Income \$96,954 \$132,874 \$110,878

Households 2,752 24,262 86,978

For More Information:

Patrick Almand | palmand@mhcreal.com

Jason Sundook | jsundook@mhcreal.com



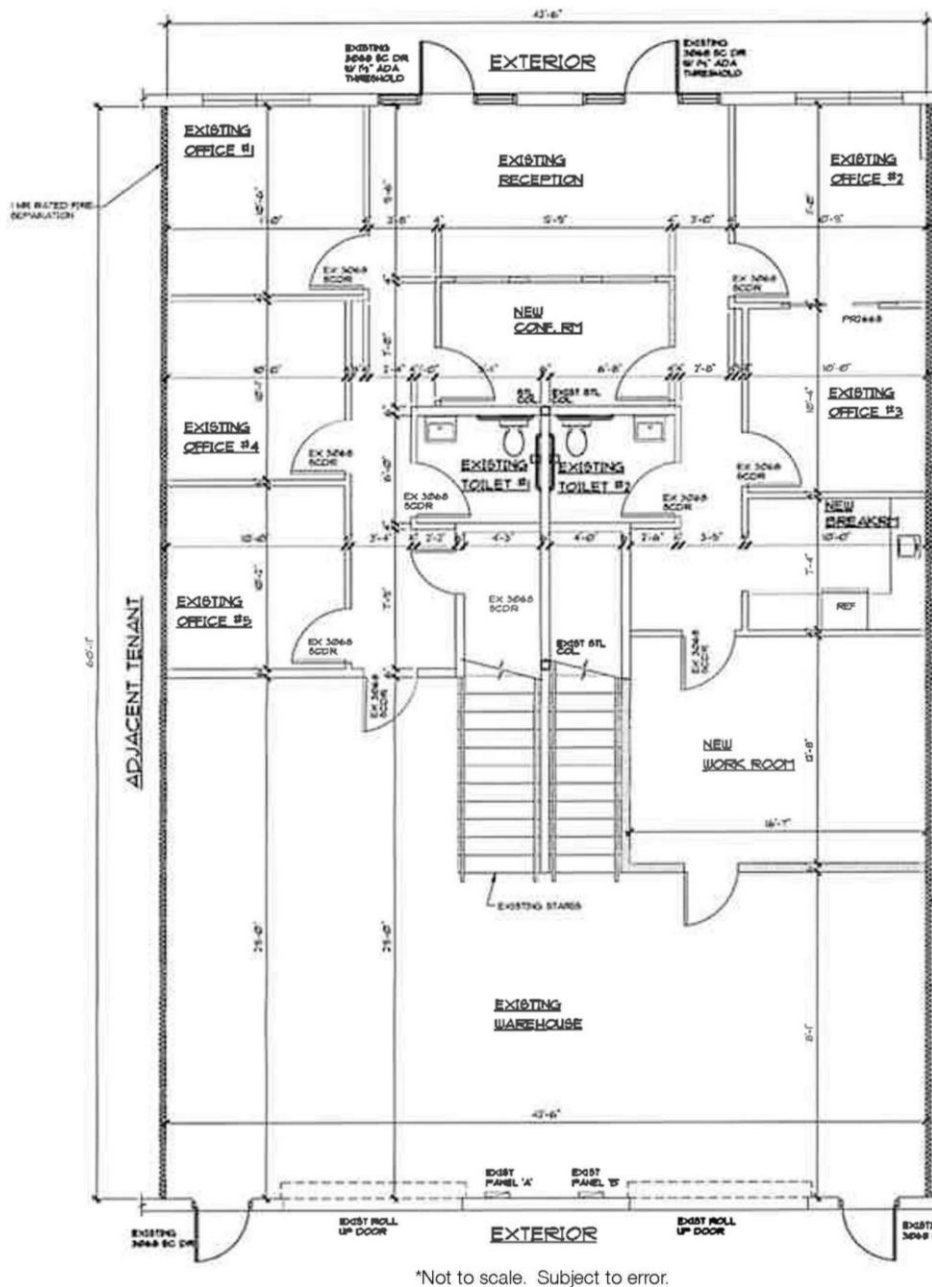
561 471 8000



www.mhcreal.com

FOR SALE: BELVEDERE WEST INDUSTRIAL PARK, SUITES 213 & 214


Office/Warehouse Space Available



Own with Confidence

A well-located industrial condo with framing in place, dual roll-up doors, and three-phase power. Positioned in a gated park with strong regional access and nearby amenities.

Patrick Almand, Associate
C: 443 370 8665 | palmand@mhcreal.com

Call today for more information!
 **561 471 8000**