

Maitland Center Office

1063 Maitland Center Commons Blvd, Maitland, FL 32751

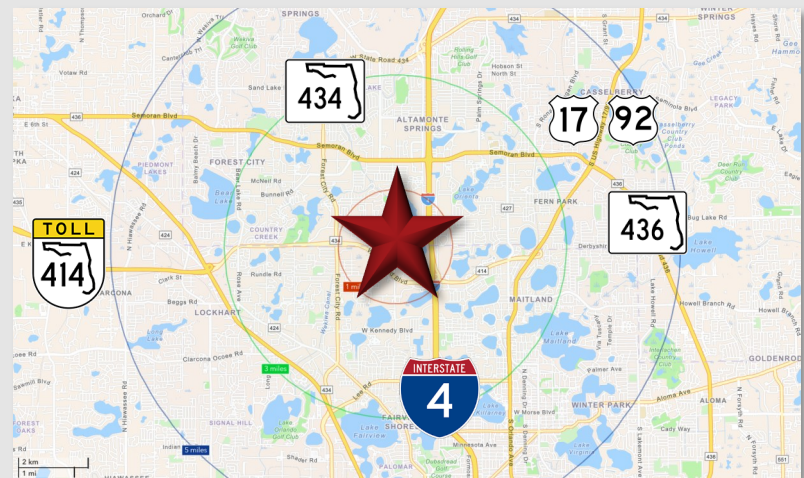
 **Palkiper**
Commercial Real Estate Services
Licensed Real Estate Broker



Lease Rate: \$20psf MG

LOCATION DETAILS

Conveniently located near Gateway Dr. and N Keller Rd., this property offers quick access to I-4 in under five minutes. Major thoroughfares such as SR 436, SR 434, and US 17-92 are nearby, providing excellent regional connectivity. A variety of local and national restaurants, cafés, and quick-service options line 17-92 and SR 434, with additional dining and shopping just minutes away in Uptown Altamonte and Maitland City Center.



LISTING DETAILS

- **±9,464 SF** 2-story office building in **excellent condition**
- Full build-out includes:
 - Lobby with elevator, waiting area, and reception desk
 - Breakroom with kitchen
 - 3 Conference rooms
 - 3 Work rooms / open areas
 - 12 Private offices and 6 open offices
- Ample shared parking

2025 DEMOGRAPHICS	1-MILE	3-MILE	5-MILE
Population	11,169	106,479	252,225
Average HH Income	\$103,469	\$100,545	\$113,202
Median HH Income	\$76,116	\$71,708	\$77,913

CONTACT FOR MORE INFORMATION

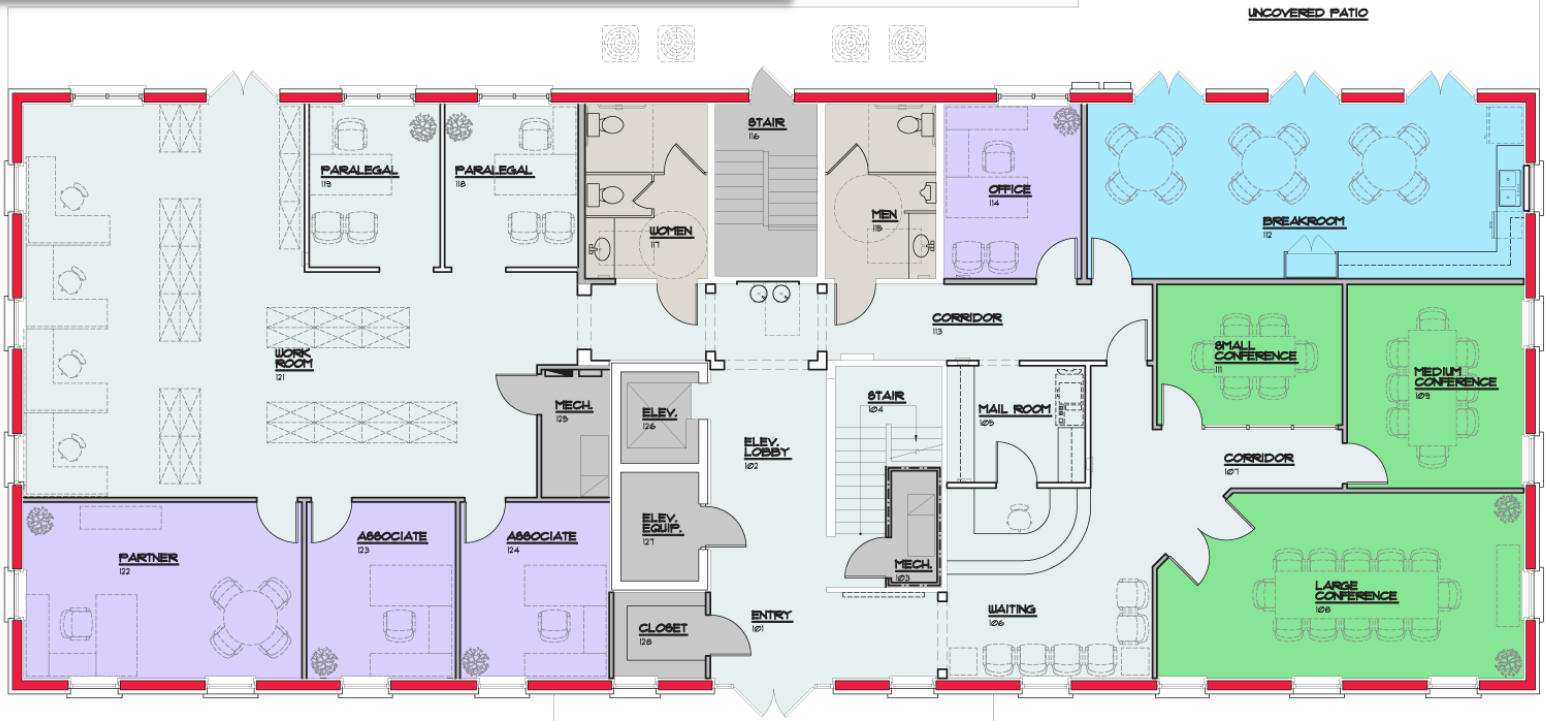
Marie Shorey, CCIM
(407) 383-8142
marie@palkiper.com

Palkiper has made every effort to obtain the information regarding this property from sources deemed reliable. However, we cannot warrant the complete accuracy thereof subject to errors, omissions, change of price, rental, or other conditions, prior sale, lease or financing or withdrawal without notice.
Licensed Real Estate Broker.

02/11/26 12:05

Maitland Center Office

1063 Maitland Center Commons Blvd, Maitland, FL 32751



1 FIRST FLOOR FINISH PLAN
SCALE: 3/16" = 1'-0"



2 SECOND FLOOR FINISH PLAN
SCALE: 3/16" = 1'-0"

CONTACT FOR MORE INFORMATION

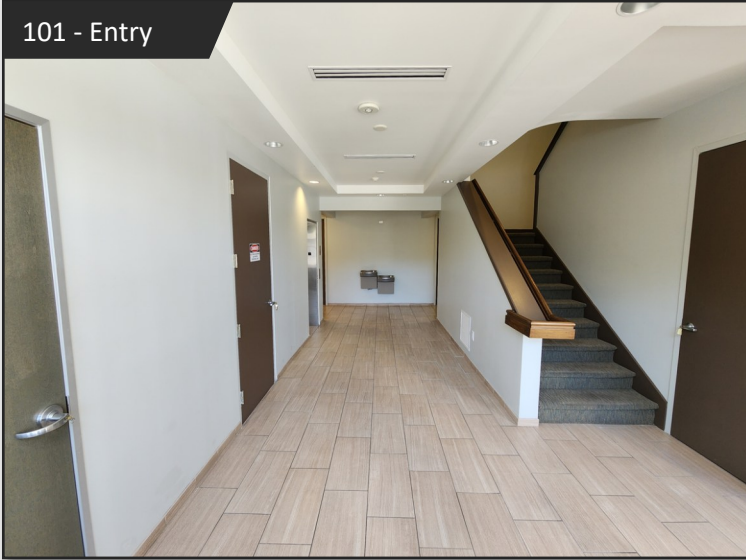
Marie Shorey, CCIM
(407) 383-8142
marie@palkiper.com

Maitland Center Office

1063 Maitland Center Commons Blvd, Maitland, FL 32751

 **Palkiper**
Commercial Real Estate Services
Licensed Real Estate Broker

101 - Entry



108 - Conference Room



105 - Mail Room



112 - Break Room



106-108 - Conferences



115 - Men's Restroom



CONTACT FOR MORE INFORMATION

Marie Shorey, CCIM

(407) 383-8142

marie@palkiper.com

Maitland Center Office

1063 Maitland Center Commons Blvd, Maitland, FL 32751

 **Palkiper**
Commercial Real Estate Services
Licensed Real Estate Broker

121 - Work Room



201 - Elev. Lobby



121 - Work Room



207 - Work Room



122 - Partner Office



207 - Work Room



CONTACT FOR MORE INFORMATION

Marie Shorey, CCIM

(407) 383-8142

marie@palkiper.com

Maitland Center Office

1063 Maitland Center Commons Blvd, Maitland, FL 32751

 **Palkiper**
Commercial Real Estate Services
Licensed Real Estate Broker

209 - Associate Office



224 - Work Room



223 - Partner Office



229 - Server Room



217 - Women's RR



CONTACT FOR MORE INFORMATION

Marie Shorey, CCIM

(407) 383-8142

marie@palkiper.com

Palkiper has made every effort to obtain the information regarding this property from sources deemed reliable. However, we cannot warrant the complete accuracy thereof subject to errors, omissions, change of price, rental, or other conditions, prior sale, lease or financing or withdrawal without notice.
Licensed Real Estate Broker.

02/11/26 12:05

Maitland Center Office

1063 Maitland Center Commons Blvd, Maitland, FL 32751

 **Palkiper**
Commercial Real Estate Services
Licensed Real Estate Broker



CONTACT FOR MORE INFORMATION

Marie Shorey, CCIM

(407) 383-8142

marie@palkiper.com

Palkiper has made every effort to obtain the information regarding this property from sources deemed reliable. However, we cannot warrant the complete accuracy thereof subject to errors, omissions, change of price, rental, or other conditions, prior sale, lease or financing or withdrawal without notice.
Licensed Real Estate Broker.

02/11/26 12:05