

FOR LEASE – Professional Office Space 13515 Bell Tower Dr., Fort Myers, FL 33907

2 nd Floor	\$22.00 PSF + \$8.75 CAM	7,080 SF
3 rd Floor	\$22.00 PSF + \$8.75 CAM	4,408 SF
\$25.00 PSF + \$8.75 CAM (Medical Use)		

Year Built: 1990

Strap: 24-45-24-00-00005.1050

Zoning: C-1

Property Description:

- Class “B” Office Building ideal for medical & healthcare admin or professional office use
- Located in the heart of Fort Myers off Daniels Pkwy. in the Bell Tower Shops anchored by Nordstrom Rack, Capital Grille, Dave & Buster’s, Ulta, The Fresh Market, Regal Belltower & ScreenX, Florida Trust & Wells Fargo Advisors
- Signalized Intersection, Dedicated turn lane
- Pylon Signage • 1 Elevator
- 91 Parking Spaces shared for both 13515 & 13525 Bell Tower Dr.

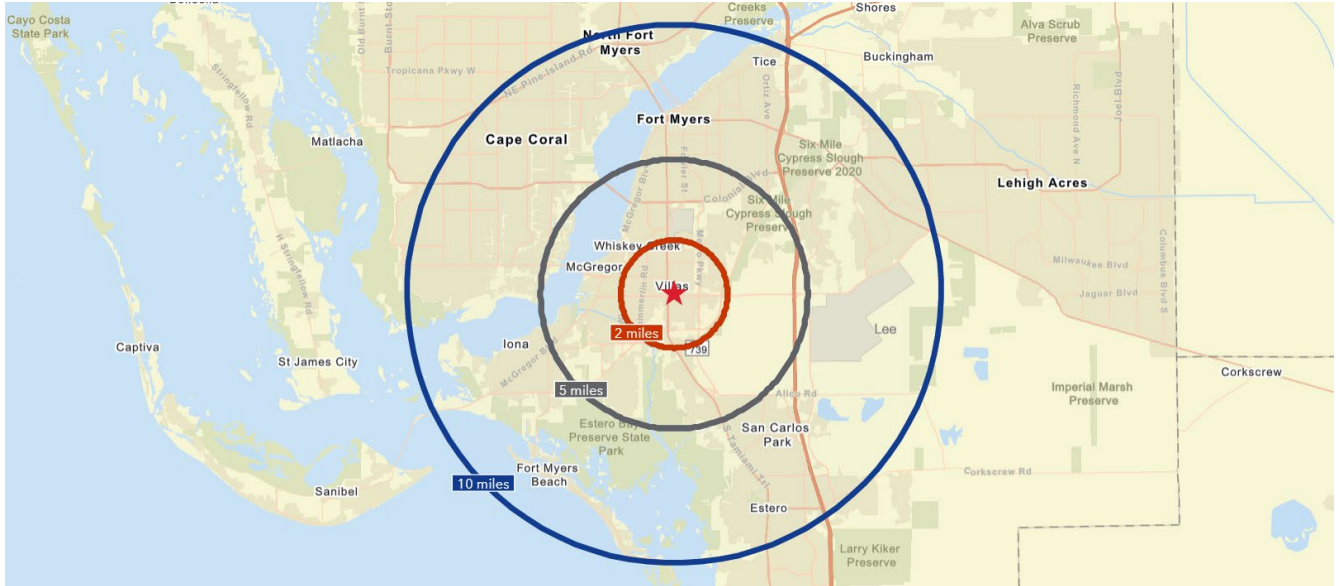


For Lease – Office Space
13515 Bell Tower Dr.

Michael J. Frye, CCIM|CEO
(239) 281-0441



DEMOGRAPHICS			
13515 Bell Tower Dr., Fort Myers, FL			
	2 Miles	5 Miles	10 Miles
Total Population	40,462	153,198	485,413
Median Age	52	53	49
Total Households	19,807	71,934	210,548
Traffic Count			
51,500 – Daniels Pkwy. 70,000 – S Tamiami Trl.			



7910 Summerlin Lakes Dr., Fort Myers, FL 33907 | O: (239) 489-0444 | ftmyerscommercial.com | michaeljfrye.com

RE/MAX Realty Group makes no guarantees, warranties or representations as to the completeness or accuracy thereof.

This property presentation is submitted subject to errors, omissions, change of price or conditions, prior sale or lease, or withdrawals without notice.

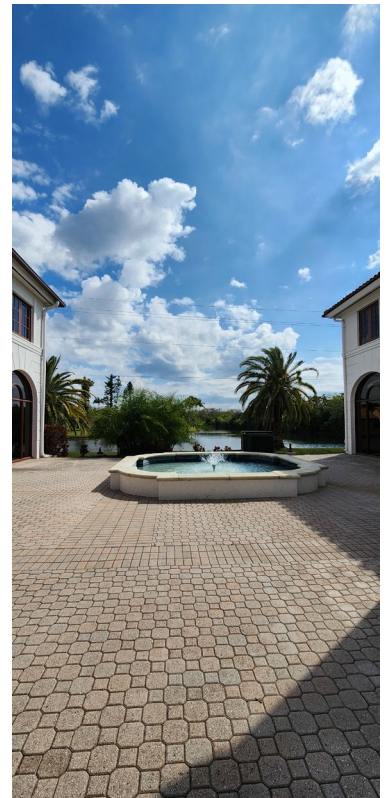
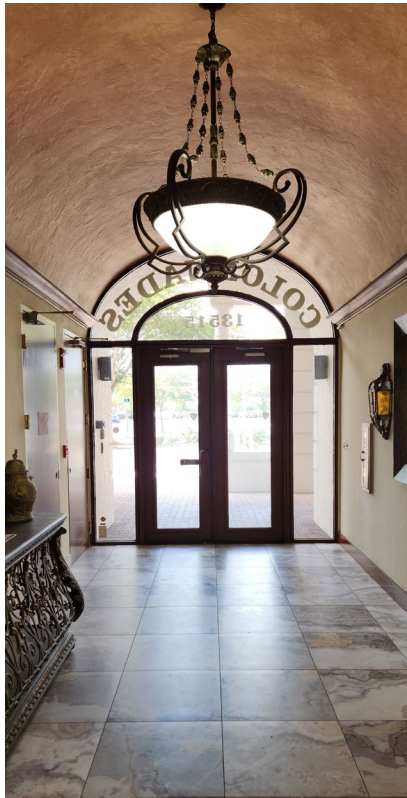
REMAX

COMMERCIAL[®]

RE/MAX REALTY GROUP

For Lease – Office Space
13515 Bell Tower Dr.

Michael J. Frye, CCIM|CEO
(239) 281-0441



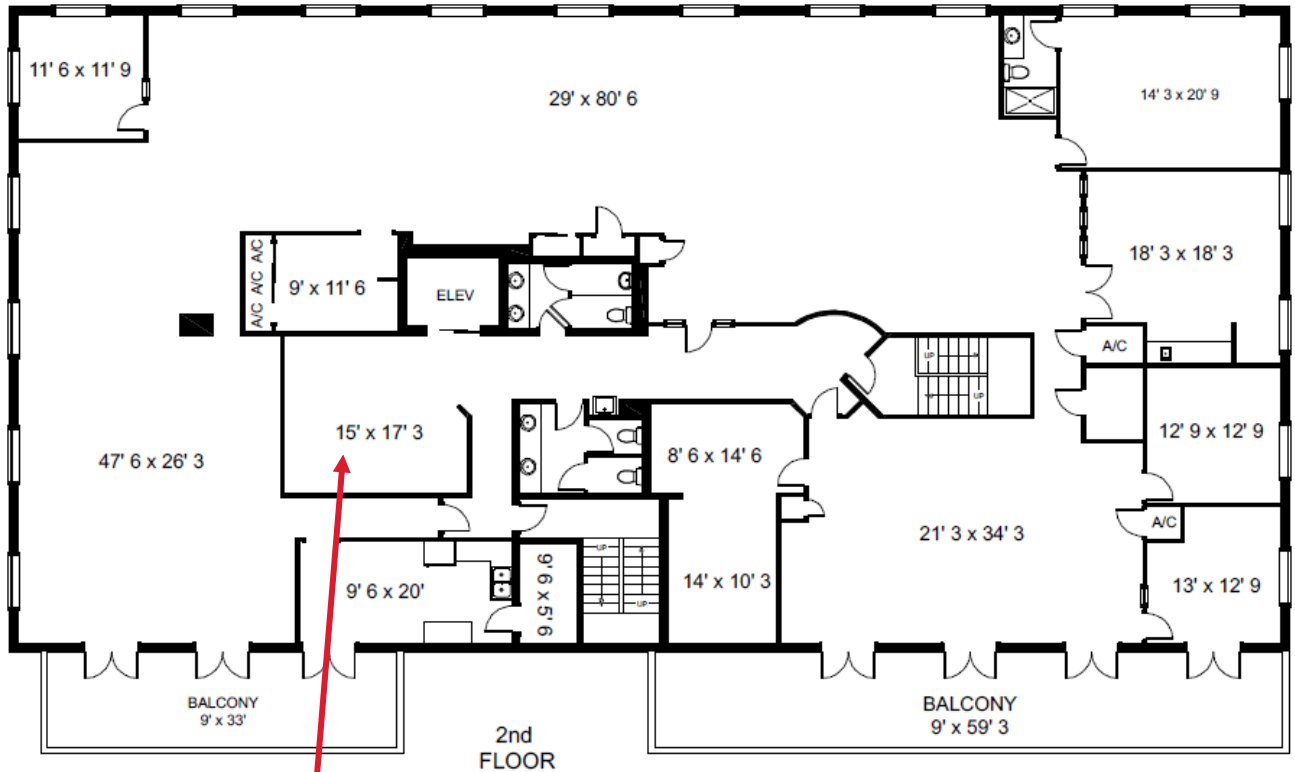
7910 Summerlin Lakes Dr., Fort Myers, FL 33907 | O: (239) 489-0444 | ftmyerscommercial.com | michaeljfrye.com

RE/MAX Realty Group makes no guarantees, warranties or representations as to the completeness or accuracy thereof.

This property presentation is submitted subject to errors, omissions, change of price or conditions, prior sale or lease, or withdrawals without notice.



Second Floor



TOTAL USABLE AREA 7080 sq. ft.

This floor plan is created from field measurements. The usable area calculations are based upon measurements from outside exterior walls to center of demising walls and to inside common area walls.

Balconies 918 sq. ft.

Stairs 242 sq. ft.
Elevator 58 sq. ft.

VERTICAL PENETRATION 300 sq. ft.



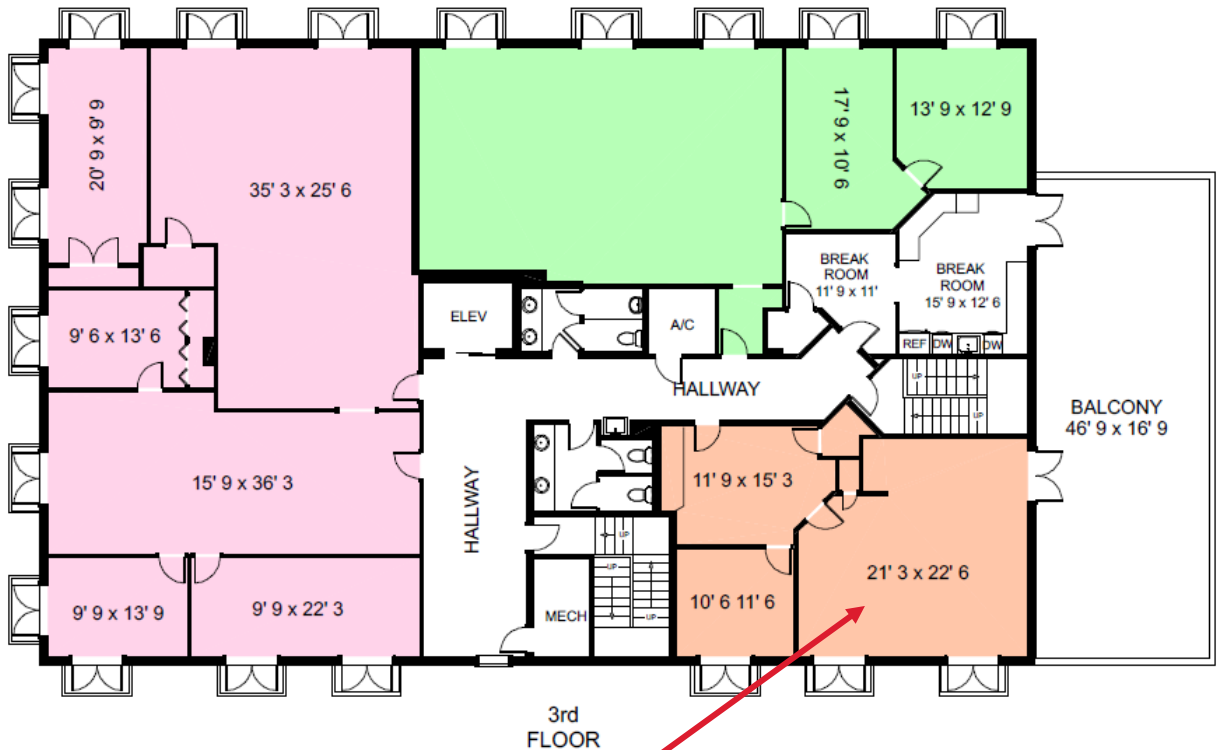
COMMERCIAL
RE/MAX REALTY GROUP

For Lease – Office Space
13515 Bell Tower Dr.

Michael J. Frye, CCIM|CEO
(239) 281-0441



Third Floor



Suite 300	2260 sq. ft.
Suite 310	1310 sq. ft.
Suite 320	838 sq. ft.

TOTAL USABLE AREA 4408 sq. ft.

This floor plan is created from field measurements. The usable area calculations are based upon measurements from outside exterior walls to center of dividing walls and to inside common area walls.

Hallway	576 sq. ft.
Restrooms	195 sq. ft.
Mechanical Room	64 sq. ft.
A/C	46 sq. ft.
Break Room	347 sq. ft.
Balcony	837 sq. ft.

TOTAL COMMON AREA 2065 sq. ft.

Stairs	242 sq. ft.
Elevator	58 sq. ft.

VERTICAL PENETRATION 300 sq. ft.

7910 Summerlin Lakes Dr., Fort Myers, FL 33907 | O: (239) 489-0444 | ftmyerscommercial.com | michaeljfrye.com

RE/MAX Realty Group makes no guarantees, warranties or representations as to the completeness or accuracy thereof.

This property presentation is submitted subject to errors, omissions, change of price or conditions, prior sale or lease, or withdrawals without notice.



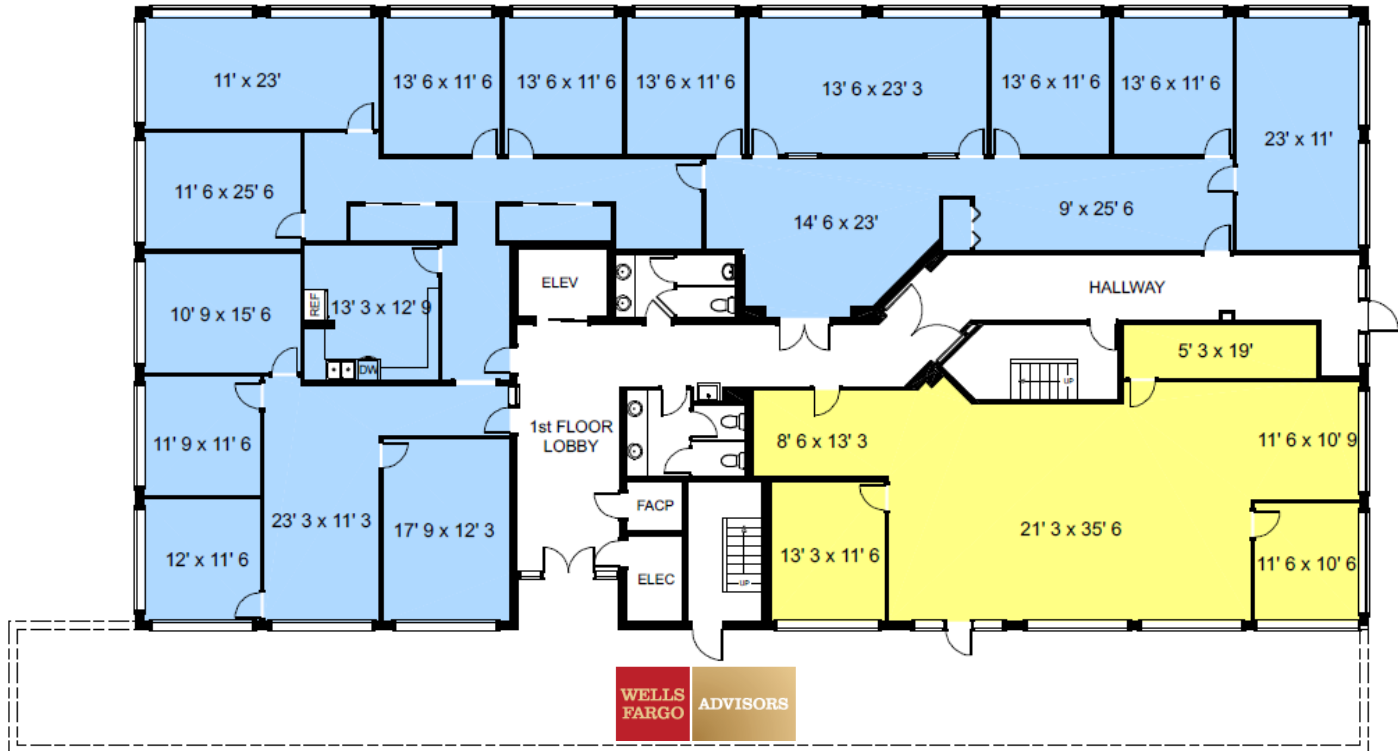
COMMERCIAL
RE/MAX REALTY GROUP

For Lease – Office Space
13515 Bell Tower Dr.

Michael J. Frye, CCIM|CEO
(239) 281-0441



First Floor



Suite 100	504 sq. ft.
Suite 110	378 sq. ft.
TOTAL COMMON AREA	2849 sq. ft.
Stairs	220 sq. ft.
Elevator	58 sq. ft.
VERTICAL PENETRATION	278 sq. ft.

7910 Summerlin Lakes Dr., Fort Myers, FL 33907 | O: (239) 489-0444 | ftmyerscommercial.com | michaeljfrye.com

RE/MAX Realty Group makes no guarantees, warranties or representations as to the completeness or accuracy thereof.
This property presentation is submitted subject to errors, omissions, change of price or conditions, prior sale or lease, or withdrawals without notice.