



C. Brenner, Inc.

1510 E. Colonial Dr. Suite 307

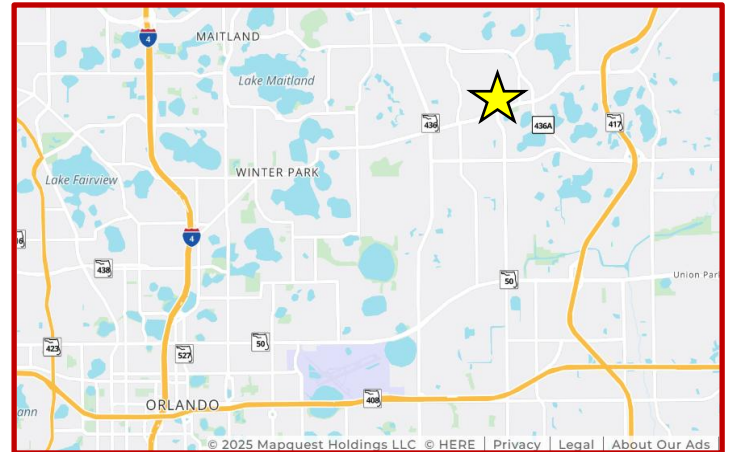
Orlando, FL 32803

Phone: (407) 677-1700

COMMERCIAL REAL ESTATE

Freestanding Office/Flex Winter Park

**4985 Palm Ave
Winter Park, FL 32792**



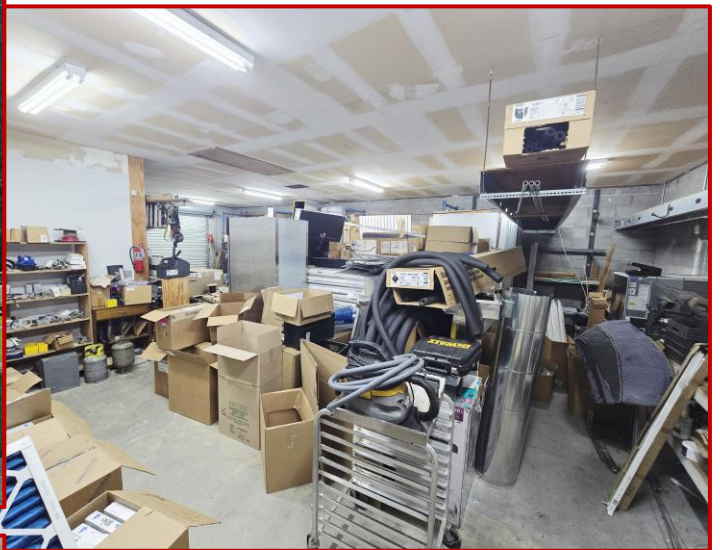
- Freestanding 2,400 SF contractor office right off Aloma Ave (SR 426)
- Highly functional space evenly split between office/storage
- Four large private offices, break room, open work space, two restrooms
- Large storage area with 9' roll up door and 10' ceilings
- Excellent natural light throughout the building
- 8 dedicated parking spaces Ample yard space could be used for storage
- Across the street from the USPO
- Convenient location near Winter Park and Oviedo
- Easy access to SR 426, SR 436 and Hwy 417
- For Sale at \$825,000

Ben Brenner
Lic. RE Broker
C. Brenner Inc.

Cell: 407-970-6447
Office: 407-677-1700
Email: bbrenner@cbrenner.com

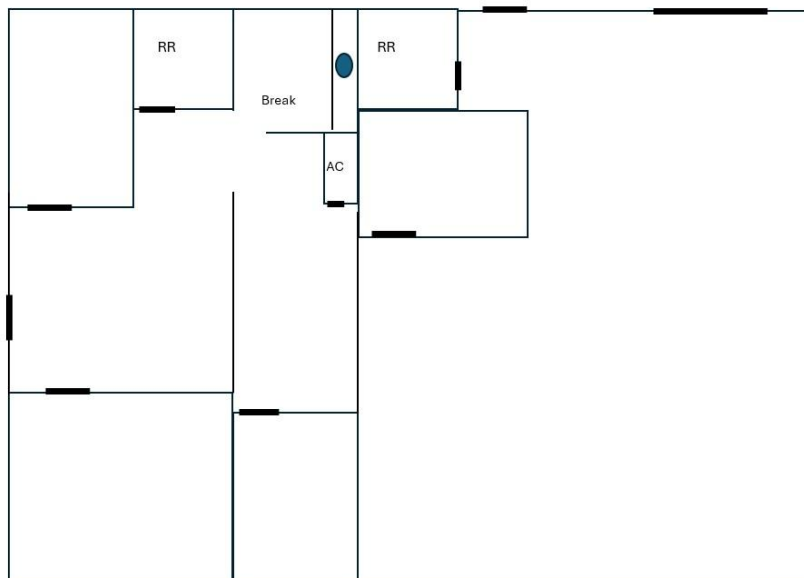
Expect Results with C Brenner Inc!

www.cbrenner.com



4985 Palm Ave
Winter Park, FL
32792
Appx 2,397 SF

10' x 9'
overhead door



10' ceilings

Expect Results with C Brenner Inc!
www.cbrenner.com