



LISTING DATA

Available SF: Suite 100 | 4,000 SF
Suite 115 | 4,000 SF

Doors: Two 12' x 14' Grade Level Doors

Clear Height: 17.5' - 20.5'

Zoning: IND-1/IND-5 (Orange County)

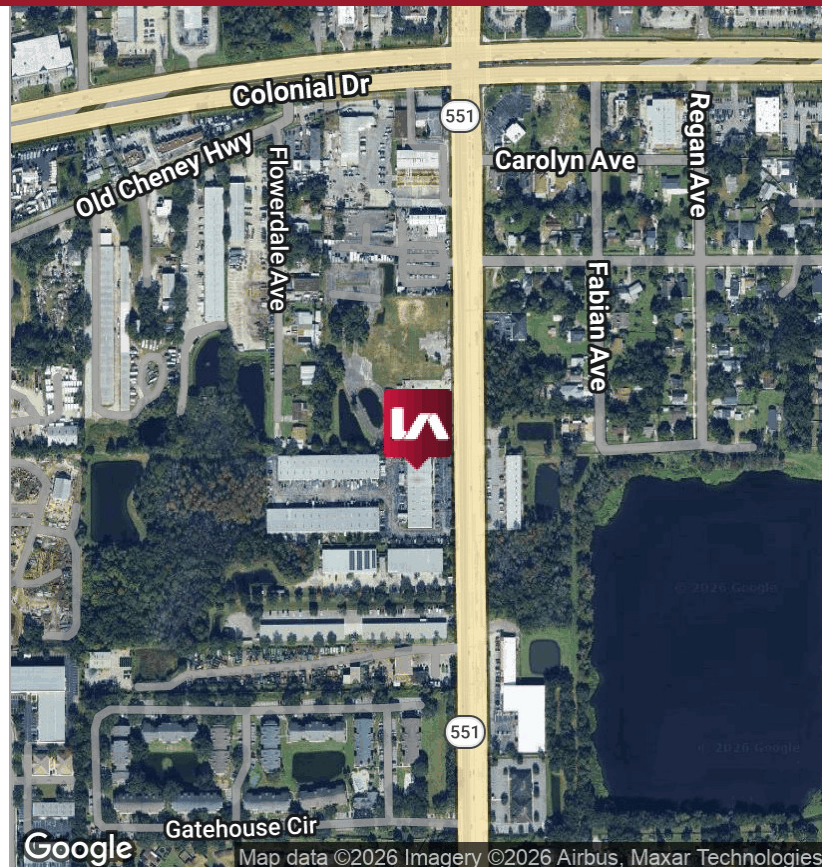
Loading: Rear

Parking Ratio: 3/1,000 SF

Comments: Goldenrod Business Center is comprised of 3 Industrial/Flex buildings totaling 78,736 SF located in east central Orlando with convenient access to SR-50, SR-408, and SR-417. The project is professionally owned and managed making it an ideal location for years to come.

ECONOMIC DATA

Lease Rate: Call For Info



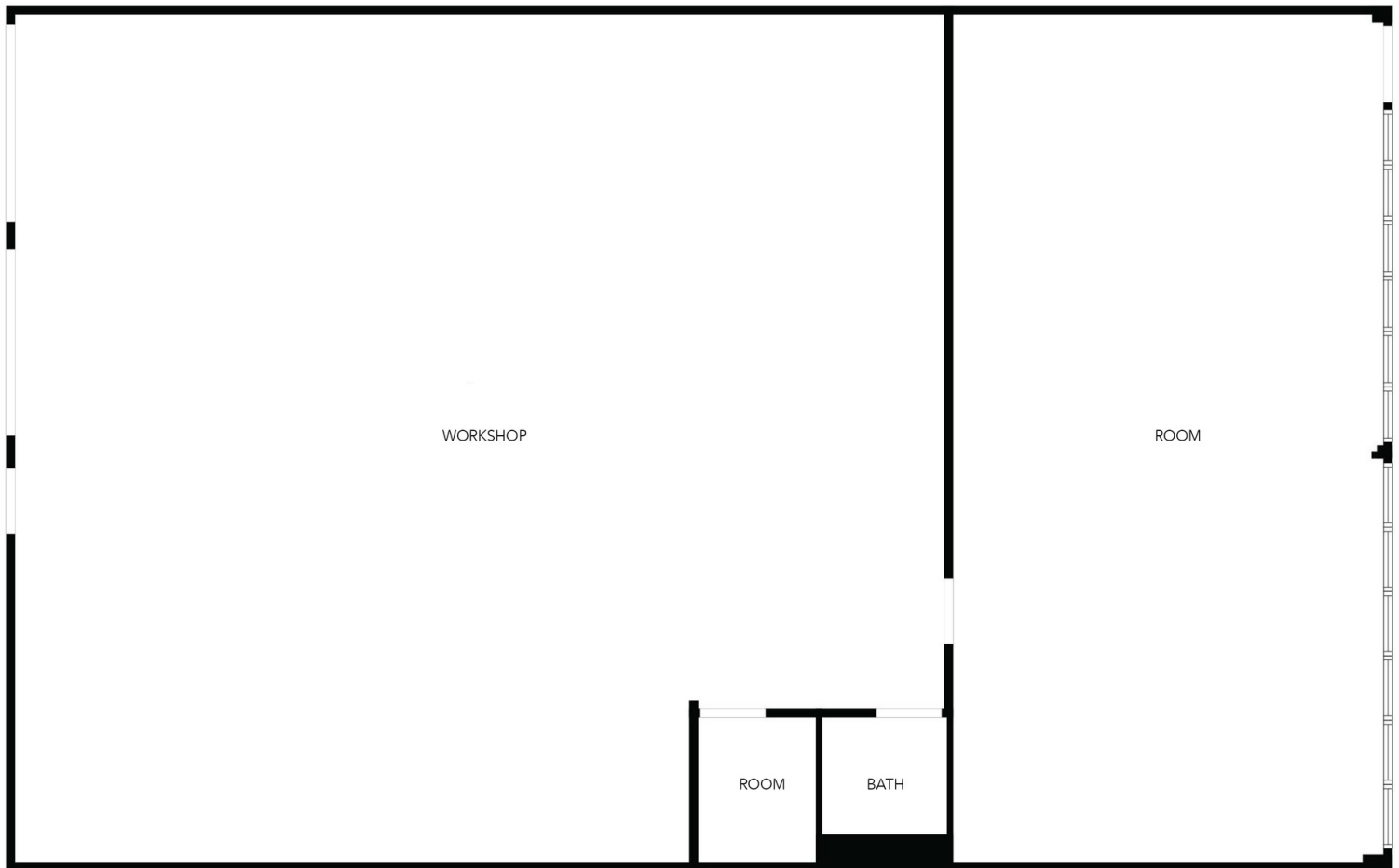


LEASE INFORMATION

Lease Type:	NNN	Lease Term:	Negotiable
Total Space:	4,000 SF	Lease Rate:	Call For Info

AVAILABLE SPACES

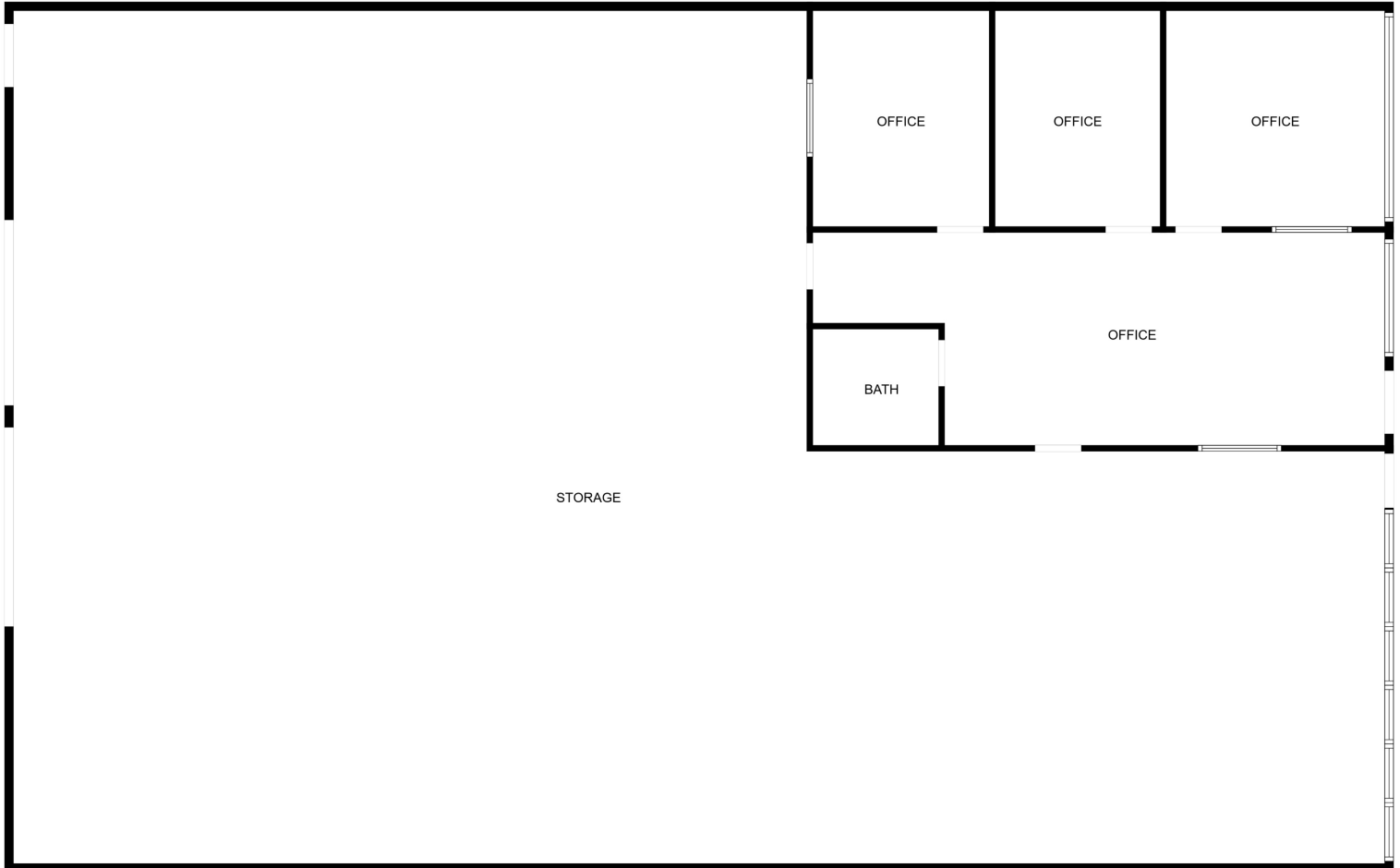
SUITE	TENANT	SIZE (SF)	LEASE TYPE	LEASE RATE	DESCRIPTION
Suite 100	Available	4,000 SF	NNN	Call For Info	1,200 SF of Showroom / Office space and Two (2) 12' x 14' Grade Level Doors
Suite 115	Available	4,000 SF	NNN	Call For Info	800 SF Office, Two (2) 12' x 14' Grade Level Doors



SUITE 100 - 4,000 SF

1460 N GOLDENROD ROAD | ORLANDO, FL 32807

FOR LEASE



FLOOR PLAN CREATED BY CUBICASA APP. MEASUREMENTS DEEMED HIGHLY RELIABLE BUT NOT GUARANTEED.

SUITE 115 - 4,000 SF