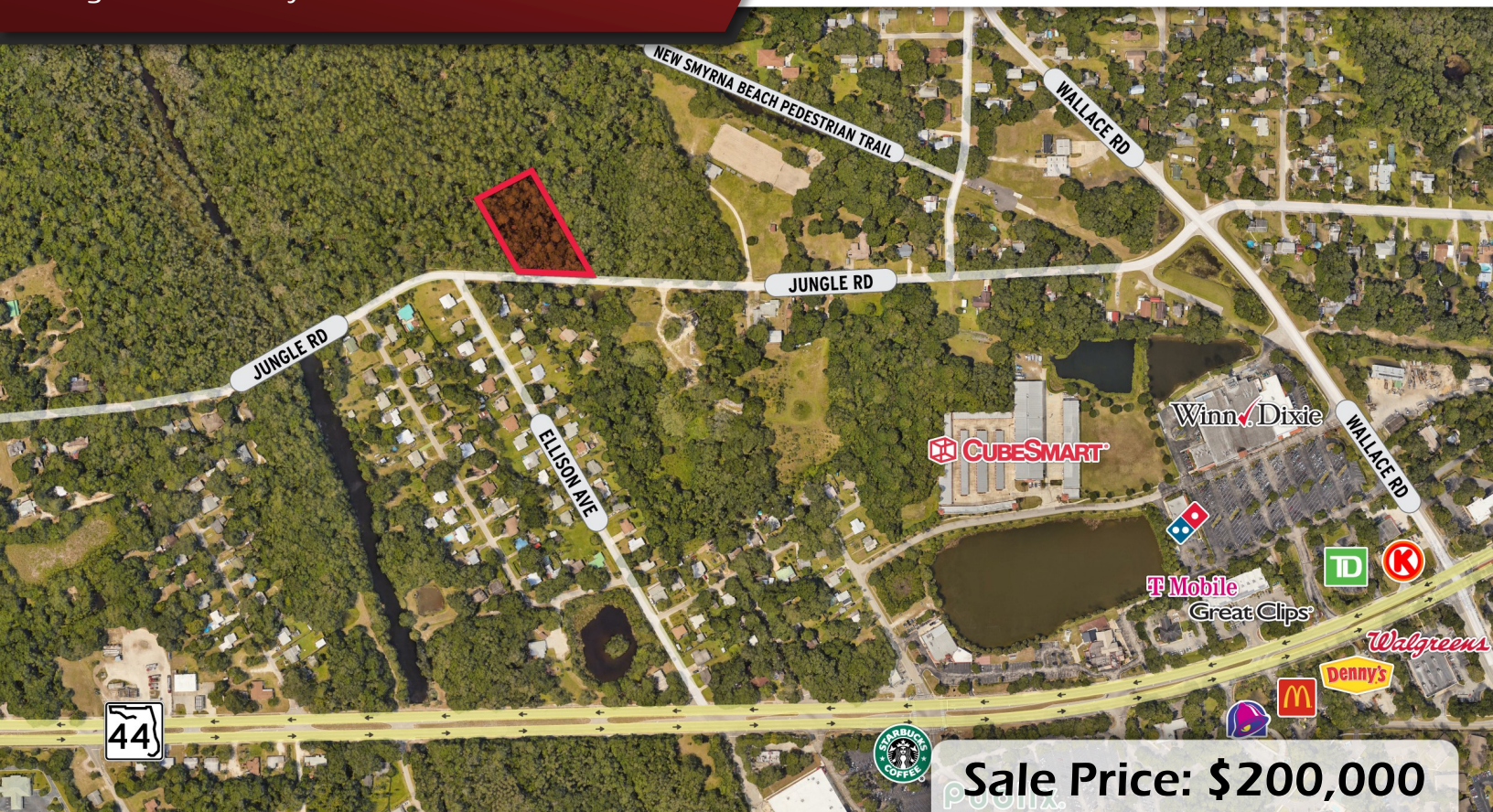


New Smyrna Beach Land

Jungle Rd. New Smyrna Beach, FL 32168

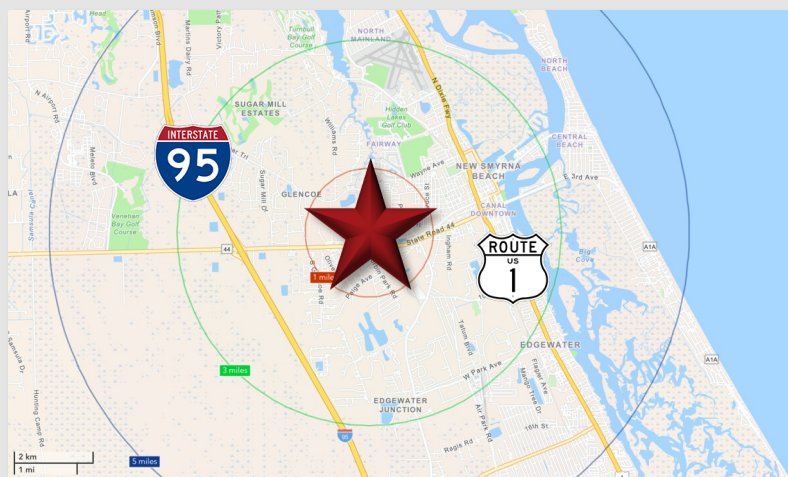
Palkiper
Commercial Real Estate Services
Licensed Real Estate Broker



Sale Price: \$200,000

LOCATION DETAILS

Located on Jungle Road just off SR 44, with direct connectivity between I-95 and US-1, two major regional corridors. The site benefits from strong surrounding commercial activity, with ALDI, Publix, Home Depot, and Sporty's Car Wash located within one mile. Within three miles, additional amenities include Walmart Supercenter, AdventHealth, and national dining options such as Chiptole, McDonald's, Culver's, and Panera Bread. Less than 5 miles from the New Smyrna Beach coastline.



LISTING DETAILS

- **±1.65 Acres** of vacant land
- +240' frontage on Jungle Road
- Zoned R-4 (Multi-Family Residential) with the city of New Smyrna Beach
- LDR (Low Density Residential) FLU
- City water available

2025 DEMOGRAPHICS	1-MILE	3-MILE	5-MILE
Population	4,308	25,294	51,230
Average HH Income	\$89,647	\$94,816	\$103,966
Median HH Income	\$71,331	\$71,342	\$75,108

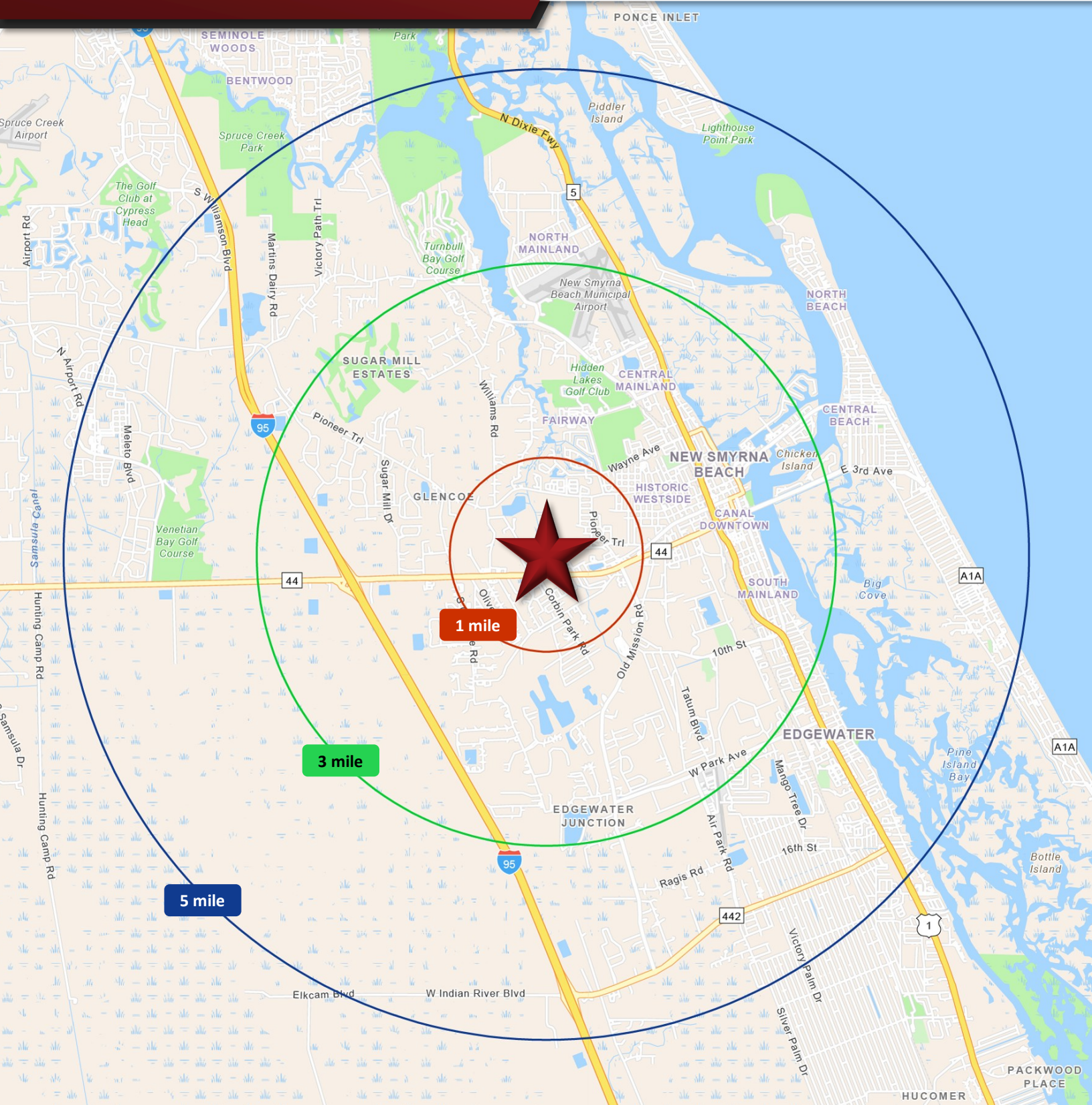
CONTACT FOR MORE INFORMATION

Shellie Sevor, JD
(321) 377-1928
Shellie@palkiper.com

New Smyrna Beach Land

Jungle Rd. New Smyrna Beach, FL 32168

 **Palkiper**
Commercial Real Estate Services
Licensed Real Estate Broker



CONTACT FOR MORE INFORMATION

Shellie Sevor, JD

(321) 377-1928

Shellie@palkiper.com

Palkiper has made every effort to obtain the information regarding this property from sources deemed reliable. However, we cannot warrant the complete accuracy thereof subject to errors, omissions, change of price, rental, or other conditions, prior sale, lease or financing or withdrawal without notice.
Licensed Real Estate Broker.

01/29/26 12:28