

We know this land.



Eshenbaugh
LAND COMPANY

The Dirt Dog



304 S. WILLOW AVENUE

TAMPA, FL 33606

813.287.8787

www.thedirtdog.com

Property Description



PROPERTY DESCRIPTION

Sanctuary Farms is a 250-acre property located just west of the Suncoast Parkway on State Road 52 in Hudson, FL (Pasco County). It features approximately 20± acres of uplands with 2,800± feet of prime frontage on State Road 52, offering excellent visibility to 29,000 cars per day. Zoned C2 (General Commercial), the site provides significant flexibility in uses and commercial development opportunities, making it an ideal location for developers and users alike seeking high traffic exposure and future growth potential. The northern portion, zoned AC (Agricultural), could be utilized for recreational purposes.

The owner will entertain a sale of just the commercial frontage.

LOCATION DESCRIPTION

Sanctuary Farms is located on the north side of State Road 52, just west of Hays Road in Hudson in Pasco County. The property is just over one mile west of the Suncoast Parkway and is in very close proximity to the Publix anchored Hays Road Town Center. There are numerous established and ongoing residential developments nearby including Angeline (planned for 30,500 units), Legends Pointe, Legends Preserve, Serengeti, and Lakeside.

The site is a short distance to Brooksville (30 minutes), Tampa International Airport (30 minutes), Wesley Chapel (30 minutes), Dade City (35 minutes), downtown Tampa (40 minutes), and St. Petersburg (50 minutes).

SIZE

250± Acres

ZONING AND FUTURE LAND USE

Zoning: C2 and AC
Future land use: RES-3

PRICE

\$9,000,000 for entire property

Aerial



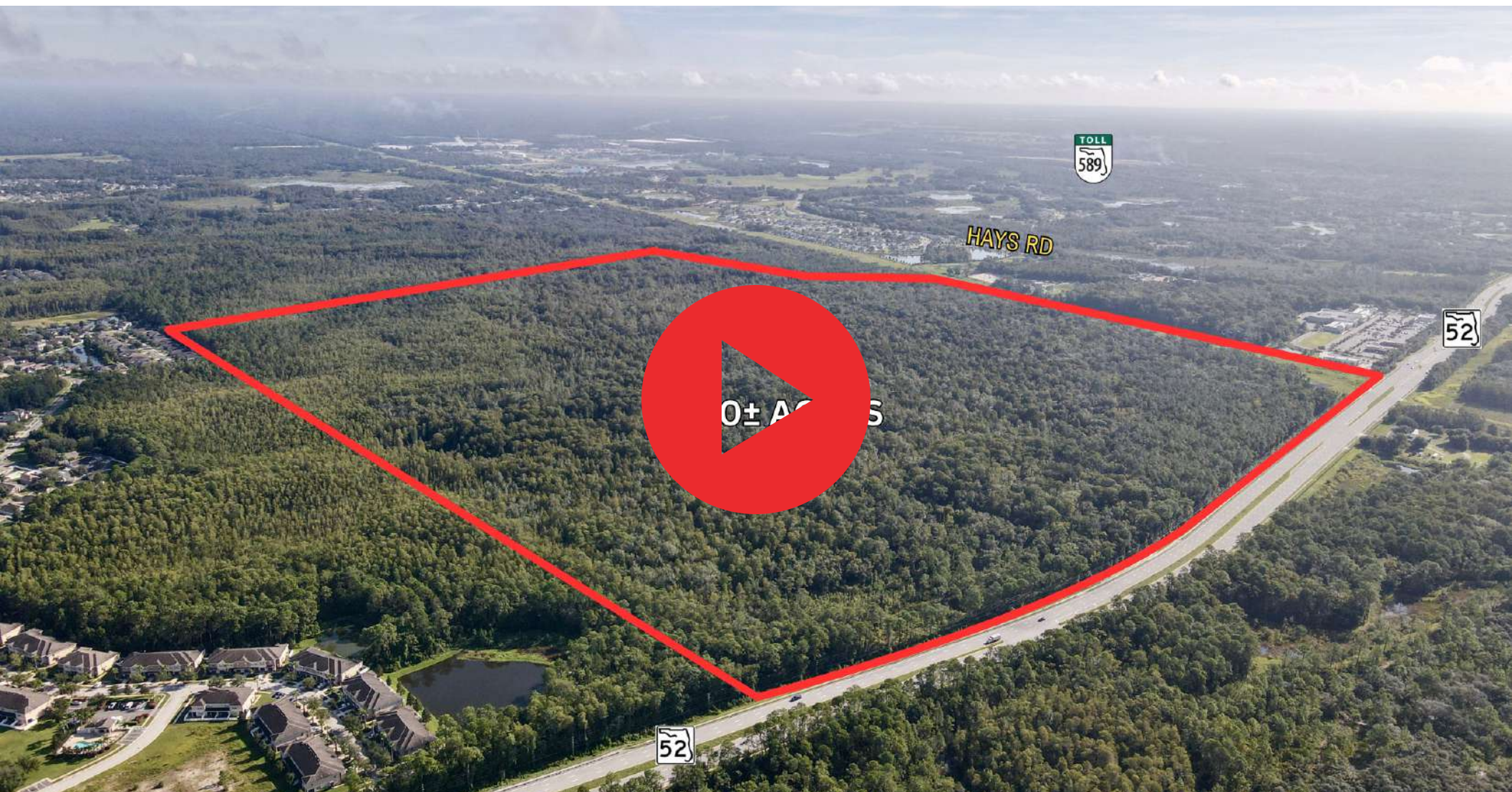
Survey



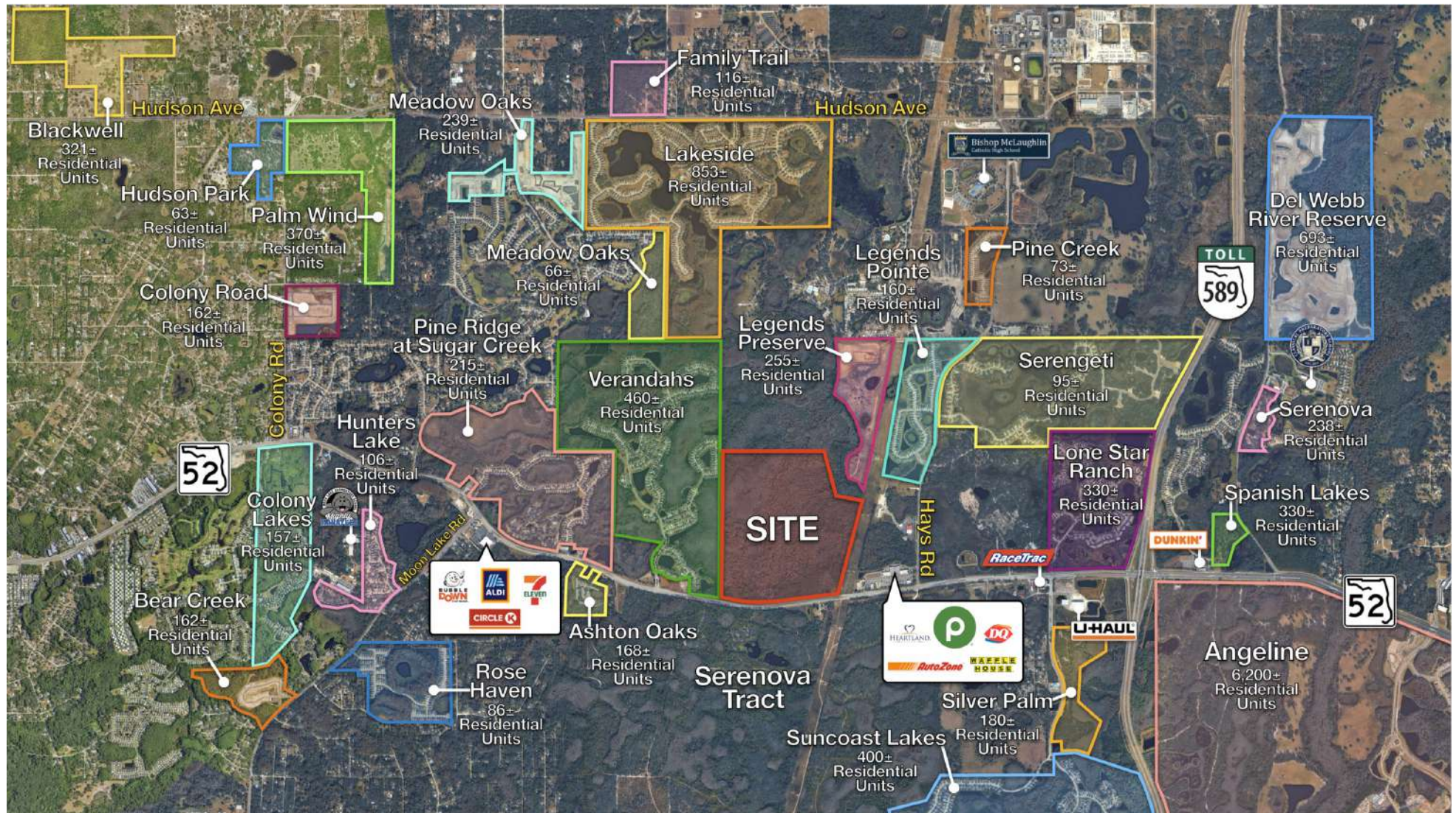
Additional Photos



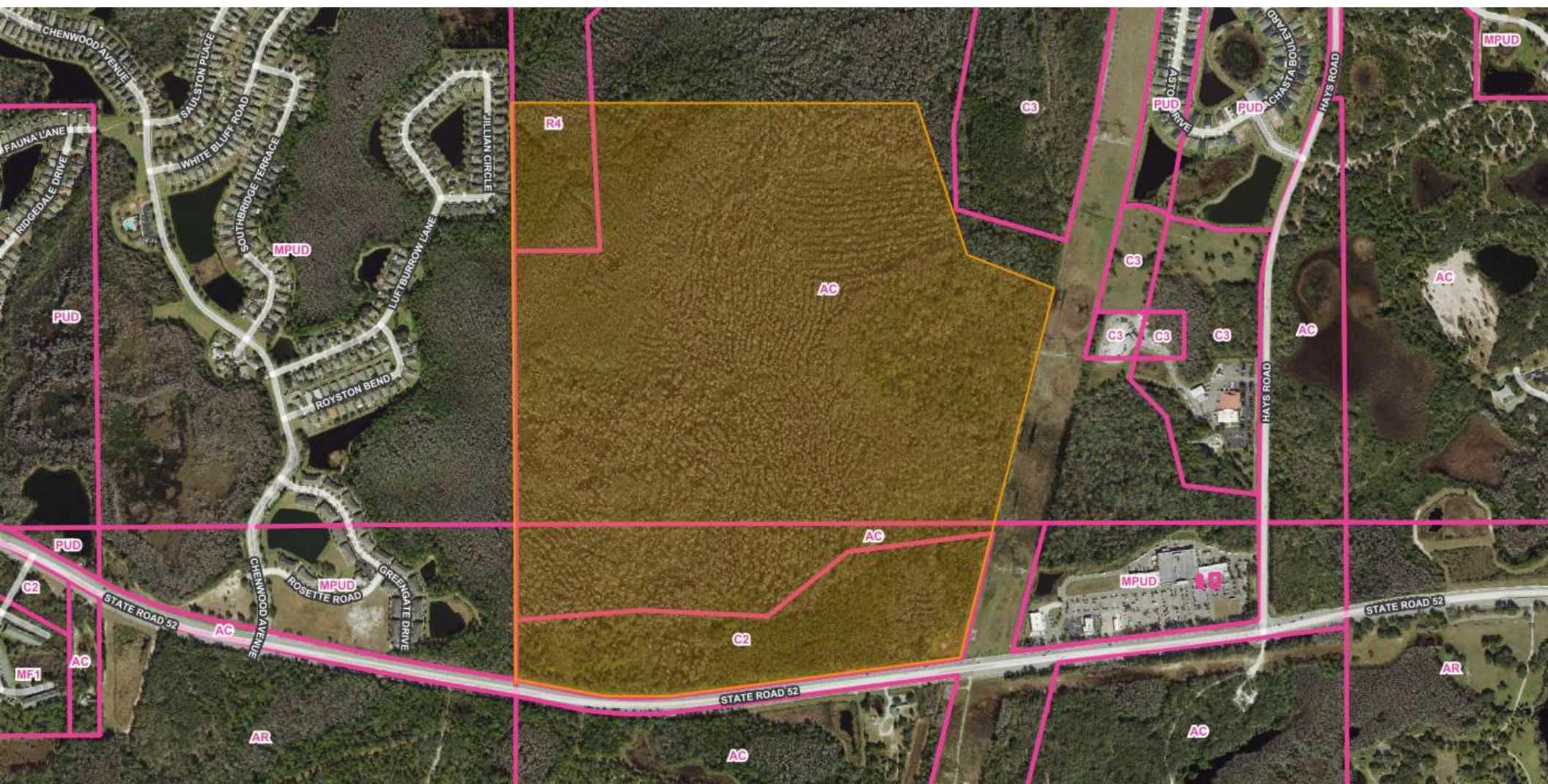
Virtual Tour for Commercial Frontage



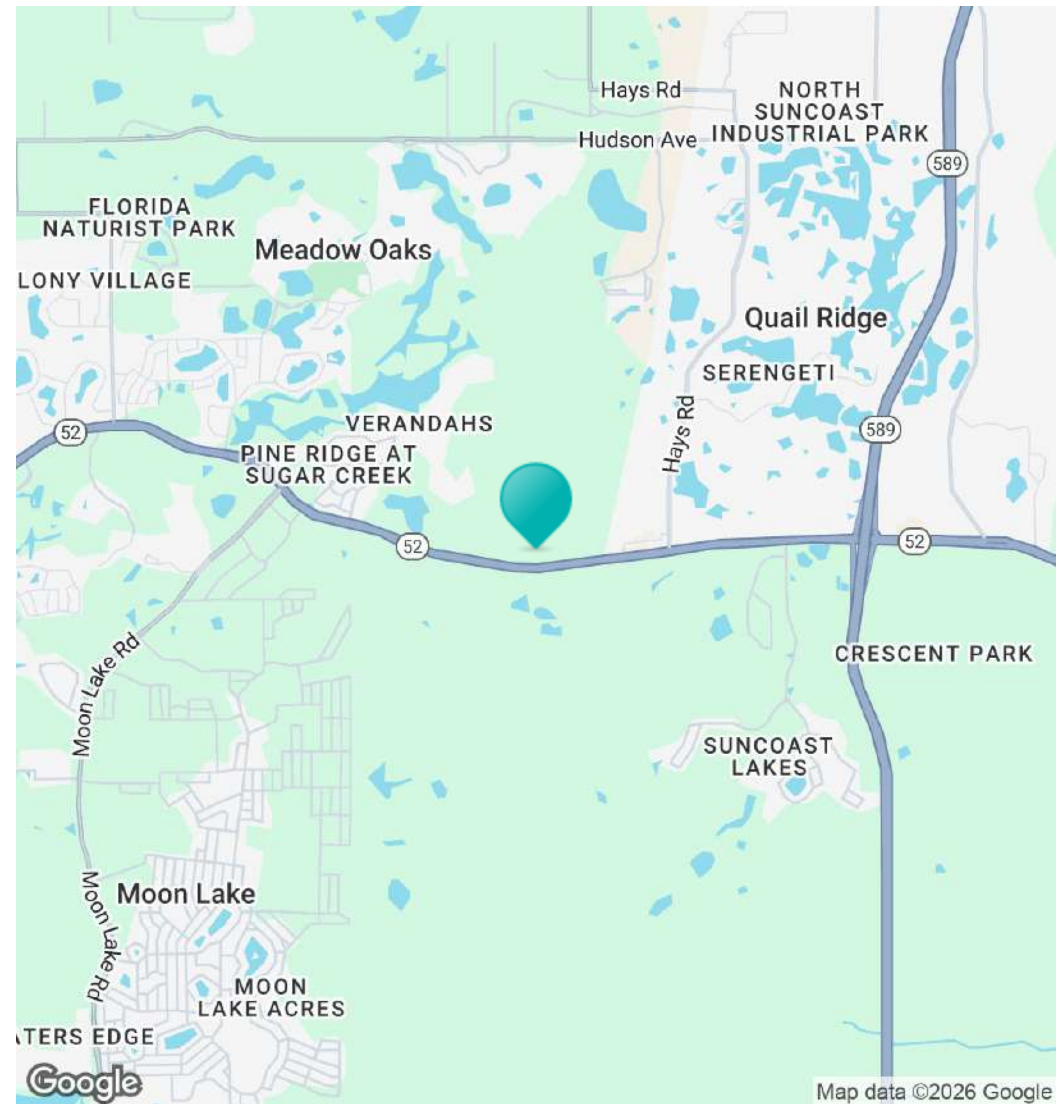
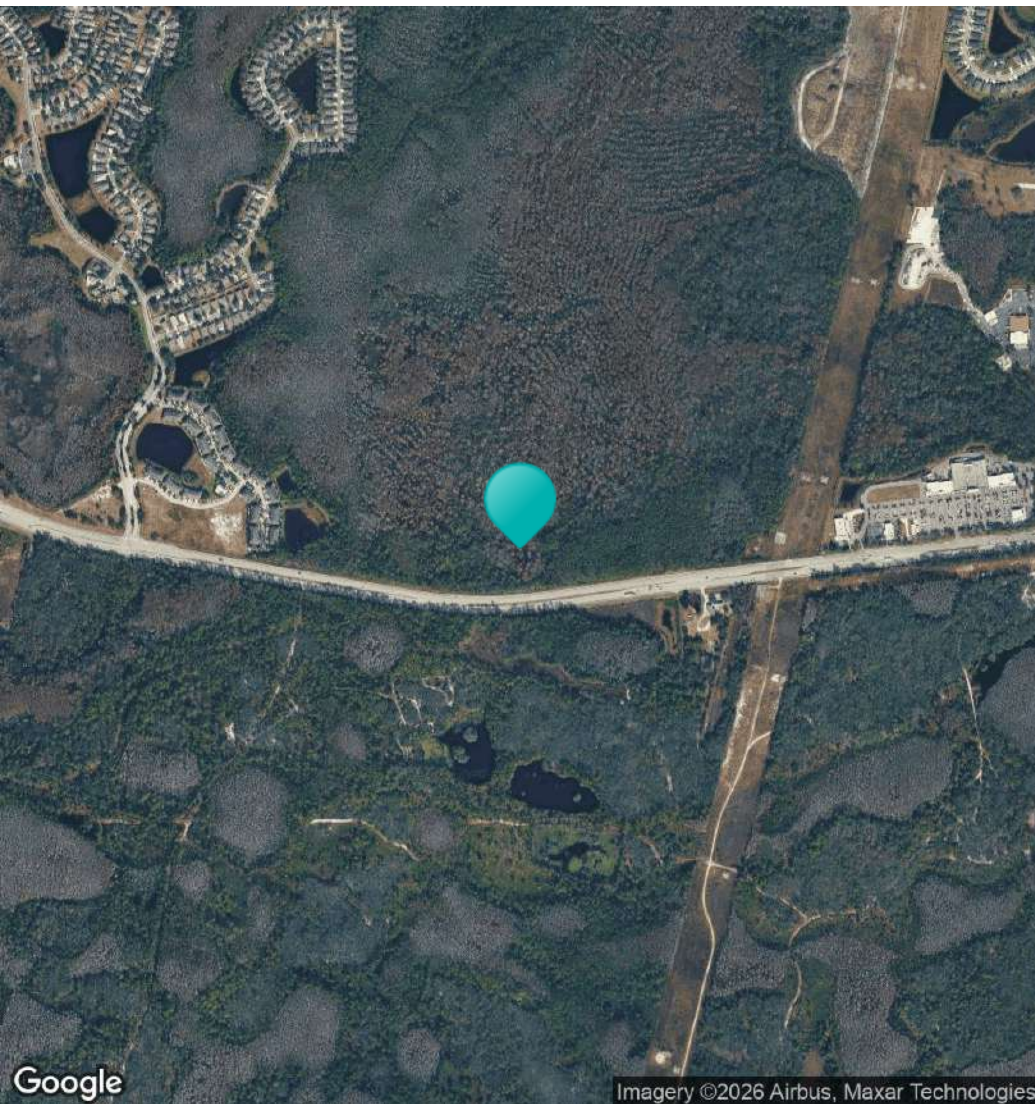
Development Map



Zoning Map



Location Maps



Confidentiality & Disclaimer

All materials and information received or derived from Eshenbaugh Land Company, LLC its directors, officers, agents, advisors, affiliates and/or any third party sources are provided without representation or warranty as to completeness, veracity, or accuracy, condition of the property, compliance or lack of compliance with applicable governmental requirements, developability or suitability, financial performance of the property, projected financial performance of the property for any party's intended use or any and all other matters.

Neither Eshenbaugh Land Company, LLC its directors, officers, agents, advisors, or affiliates makes any representation or warranty, express or implied, as to accuracy or completeness of the any materials or information provided, derived, or received. Materials and information from any source, whether written or verbal, that may be furnished for review are not a substitute for a party's active conduct of its own due diligence to determine these and other matters of significance to such party. Eshenbaugh Land Company, LLC will not investigate or verify any such matters or conduct due diligence for a party unless otherwise agreed in writing.

EACH PARTY SHALL CONDUCT ITS OWN INDEPENDENT INVESTIGATION AND DUE DILIGENCE.

Any party contemplating or under contract or in escrow for a transaction is urged to verify all information and to conduct their own inspections and investigations including through appropriate third party independent professionals selected by such party. All financial data should be verified by the party including by obtaining and reading applicable documents and reports and consulting appropriate independent professionals. Eshenbaugh Land Company, LLC makes no warranties and/or representations

regarding the veracity, completeness, or relevance of any financial data or assumptions. Eshenbaugh Land Company, LLC does not serve as a financial advisor to any party regarding any proposed transaction. All data and assumptions regarding financial performance, including that used for financial modeling purposes, may differ from actual data or performance. Any estimates of market rents and/or projected rents that may be provided to a party do not necessarily mean that rents can be established at or increased to that level. Parties must evaluate any applicable contractual and governmental limitations as well as market conditions, vacancy factors and other issues in order to determine rents from or for the property.

Legal questions should be discussed by the party with an attorney. Tax questions should be discussed by the party with a certified public accountant or tax attorney. Title questions should be discussed by the party with a title officer or attorney. Questions regarding the condition of the property and whether the property complies with applicable governmental requirements should be discussed by the party with appropriate engineers, architects, contractors, other consultants and governmental agencies. All properties and services are marketed by Eshenbaugh Land Company, LLC in compliance with all applicable fair housing and equal opportunity laws.

Eshenbaugh Land Company is a licensed real estate brokerage firm in Florida and William A. Eshenbaugh is the broker of record.