

MEDICAL OFFICE FOR SALE

121 Sparta Highway
Eatonton, GA 31024



Summary

Area Info

Photos

Floor Plans

Aerial

Site Map



CONTACT

Patty Burns, CCIM, ALC
478-746-9421 Office
478-951-5100 Cell
patty@fickling.com

Trip Wilhoit, CCIM, ALC
478-746-9421 Office
478-960-4080 Cell
trip@fickling.com

Jonathan Schuemann
478-746-9421 Office
561-676-4633 Cell
jonathan@fickling.com



577 Mulberry St, Suite 1100
Macon, GA 31201
478.746.9421 Office
<https://commercial.fickling.com>

This information is from resources deemed to be reliable and is subject to change without notice. No warranties or guarantees for accuracy are made by Fickling and Company.

PROPERTY INFORMATION

BUILDING

Property Address: 121 Sparta Highway
Eatonton, GA 31024

County: Putnam

Total Size: ±2,560 SF

Year Built: 1996

Utilities: All available

Parking: Paved, onsite

Traffic Count: Sparta Highway – 9,080 VPD

SITE

Site Size: 1 Acre

Parcel ID: 063 012

Zoning: C-2 City Commercial

| Demographics 2024 | 1 Mile | 3 Miles | 5 Miles |
|-------------------|----------|----------|----------|
| Population | 1,673 | 5,325 | 6,953 |
| Avg HH Income | \$70,921 | \$81,585 | \$81,248 |
| Median Age | 37.1 | 36.7 | 37.5 |

REDUCED PRICE: \$349,000.00

~~SALE PRICE: \$399,000.00~~

CONTACT

Patty Burns, CCIM, ALC
478-746-9421 Office
478-951-5100 Cell
patty@fickling.com

Trip Wilhoit, CCIM, ALC
478-746-9421 Office
478-960-4080 Cell
trip@fickling.com

Jonathan Schuemann
478-746-9421 Office
561-676-4633 Cell
jonathan@fickling.com



577 Mulberry St, Suite 1100
Macon, GA 31201
478.746.9421 Office
<https://commercial.fickling.com>

MEDICAL OFFICE FOR SALE

121 Sparta Highway
Eatonton, GA 31024

[Summary](#)[Area Info](#)[Photos](#)[Floor Plans](#)[Aerial](#)[Site Map](#)

AREA INFORMATION

BUILDING

This 2,560 SF medical building is now available for sale! Excellent visibility with monument signage on Sparta Highway. Located directly behind 123 Sparta Highway. With multiple offices, two (2) rest rooms, and kitchen, this property is ideal for use as medical office, professional office, and any other business use.

LOCATION

Situated on Sparta Highway, approximately 1 mile from Downtown Eatonton. Nearby businesses include the Putnam General Hospital, Eatonton Health & Rehabilitation, Putnam Pediatrics, Central GA Kidney Specialist, Young-Jones Dental Center, Eatonton Pediatrics, and Putnam County Middle School.



CONTACT

Patty Burns, CCIM, ALC
478-746-9421 Office
478-951-5100 Cell
patty@fickling.com

Trip Wilhoit, CCIM, ALC
478-746-9421 Office
478-960-4080 Cell
trip@fickling.com

Jonathan Schuemann
478-746-9421 Office
561-676-4633 Cell
jonathan@fickling.com



577 Mulberry St, Suite 1100
Macon, GA 31201
478.746.9421 Office
<https://commercial.fickling.com>

MEDICAL OFFICE FOR SALE

121 Sparta Highway
Eatonton, GA 31024



Summary

Area Info

Photos

Floor Plans

Aerial

Site Map



CONTACT

Patty Burns, CCIM, ALC
478-746-9421 Office
478-951-5100 Cell
patty@fickling.com

Trip Wilhoit, CCIM, ALC
478-746-9421 Office
478-960-4080 Cell
trip@fickling.com

Jonathan Schuemann
478-746-9421 Office
561-676-4633 Cell
jonathan@fickling.com



577 Mulberry St, Suite 1100
Macon, GA 31201
478.746.9421 Office
<https://commercial.fickling.com>

MEDICAL OFFICE FOR SALE

121 Sparta Highway
Eatonton, GA 31024



Summary

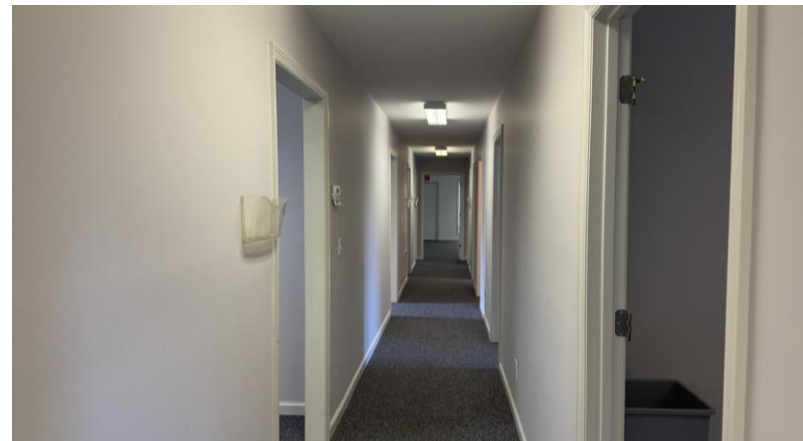
Area Info

Photos

Floor Plans

Aerial

Site Map



CONTACT

Patty Burns, CCIM, ALC
478-746-9421 Office
478-951-5100 Cell
patty@fickling.com

Trip Wilhoit, CCIM, ALC
478-746-9421 Office
478-960-4080 Cell
trip@fickling.com

Jonathan Schuemann
478-746-9421 Office
561-676-4633 Cell
jonathan@fickling.com



577 Mulberry St, Suite 1100
Macon, GA 31201
478.746.9421 Office
<https://commercial.fickling.com>

This information is from resources deemed to be reliable and is subject to change without notice. No warranties or guarantees for accuracy are made by Fickling and Company.

MEDICAL OFFICE FOR SALE

121 Sparta Highway
Eatonton, GA 31024



Summary

Area Info

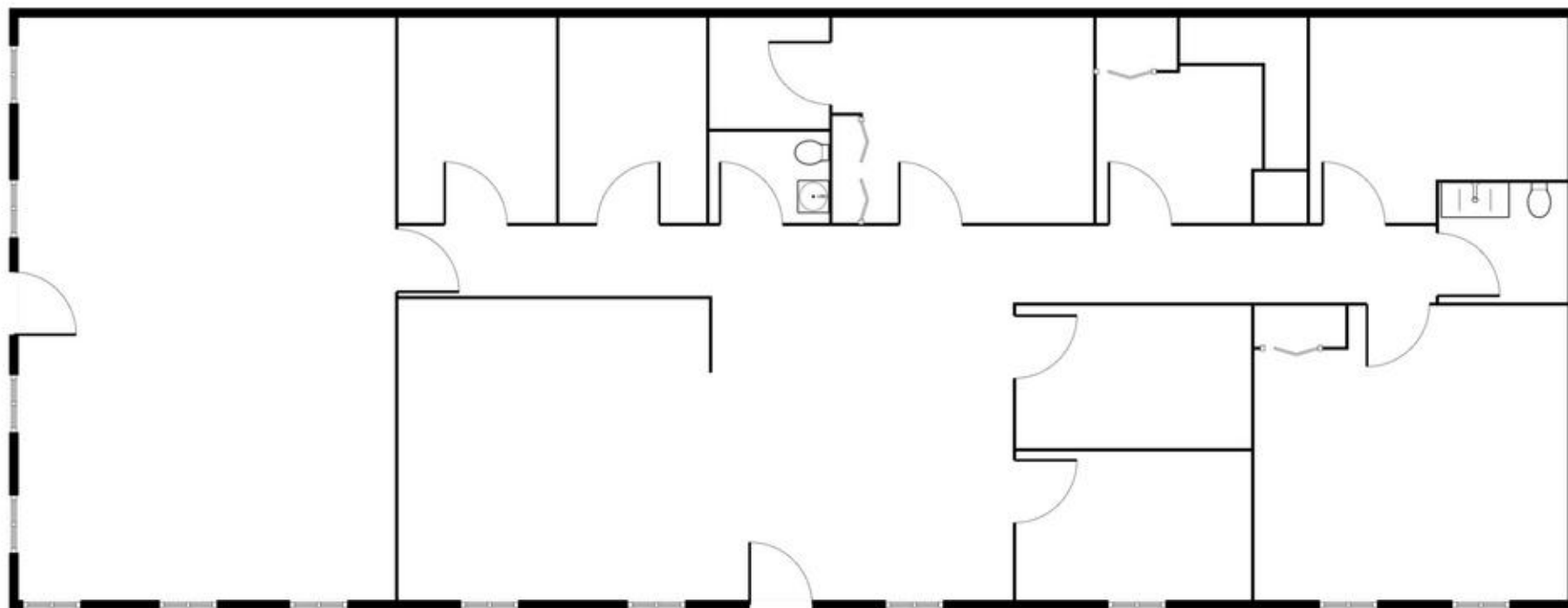
Photos

Floor Plans

Aerial

Site Map

FLOOR PLAN



*All measurements and all calculations of area are approximate and not guaranteed

CONTACT

Patty Burns, CCIM, ALC
478-746-9421 Office
478-951-5100 Cell
patty@fickling.com

Trip Wilhoit, CCIM, ALC
478-746-9421 Office
478-960-4080 Cell
trip@fickling.com

Jonathan Schuemann
478-746-9421 Office
561-676-4633 Cell
jonathan@fickling.com



577 Mulberry St, Suite 1100
Macon, GA 31201
478.746.9421 Office
<https://commercial.fickling.com>

MEDICAL OFFICE FOR SALE

121 Sparta Highway
Eatonton, GA 31024



Summary

Area Info

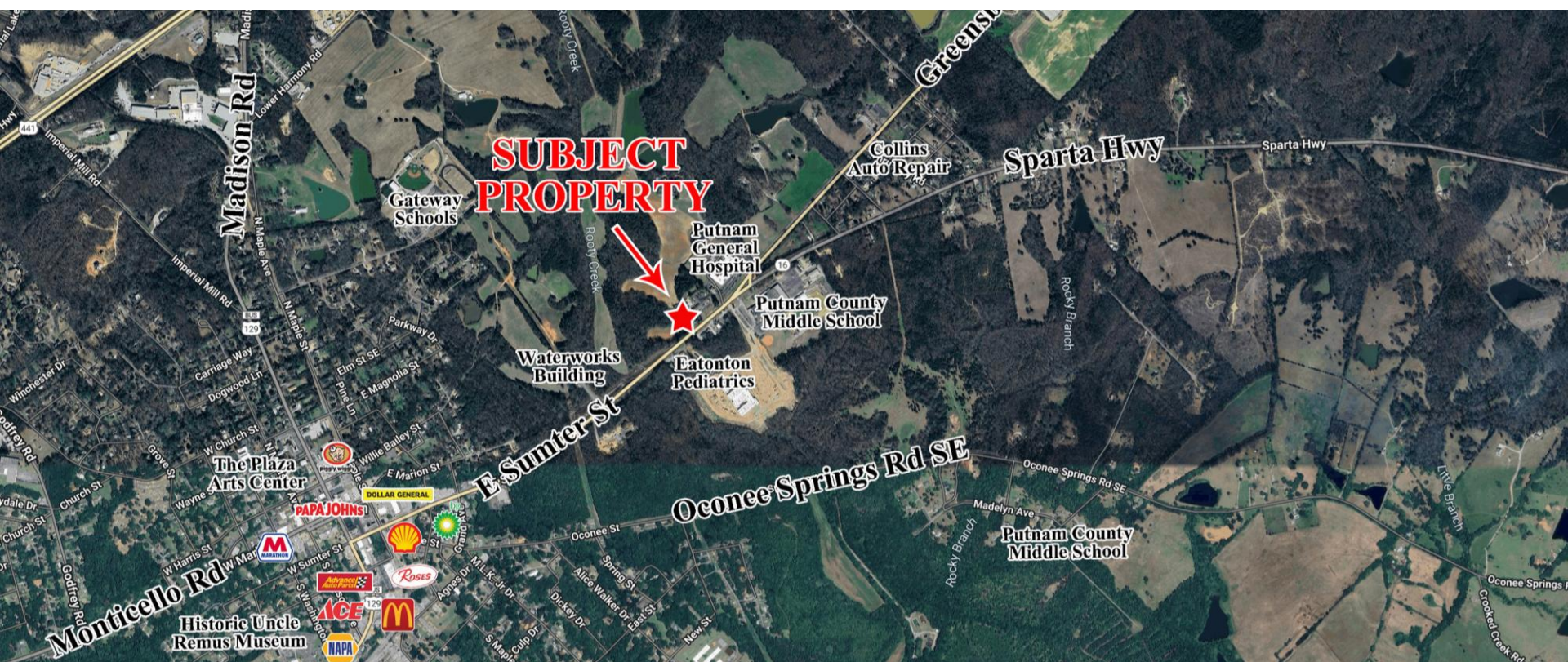
Photos

Floor Plans

Aerial

Site Map

AERIAL



CONTACT

Patty Burns, CCIM, ALC
478-746-9421 Office
478-951-5100 Cell
patty@fickling.com

Trip Wilhoit, CCIM, ALC
478-746-9421 Office
478-960-4080 Cell
trip@fickling.com

Jonathan Schuemann
478-746-9421 Office
561-676-4633 Cell
jonathan@fickling.com



577 Mulberry St, Suite 1100
Macon, GA 31201
478.746.9421 Office
<https://commercial.fickling.com>

MEDICAL OFFICE FOR SALE

121 Sparta Highway
Eatonton, GA 31024



Summary

Area Info

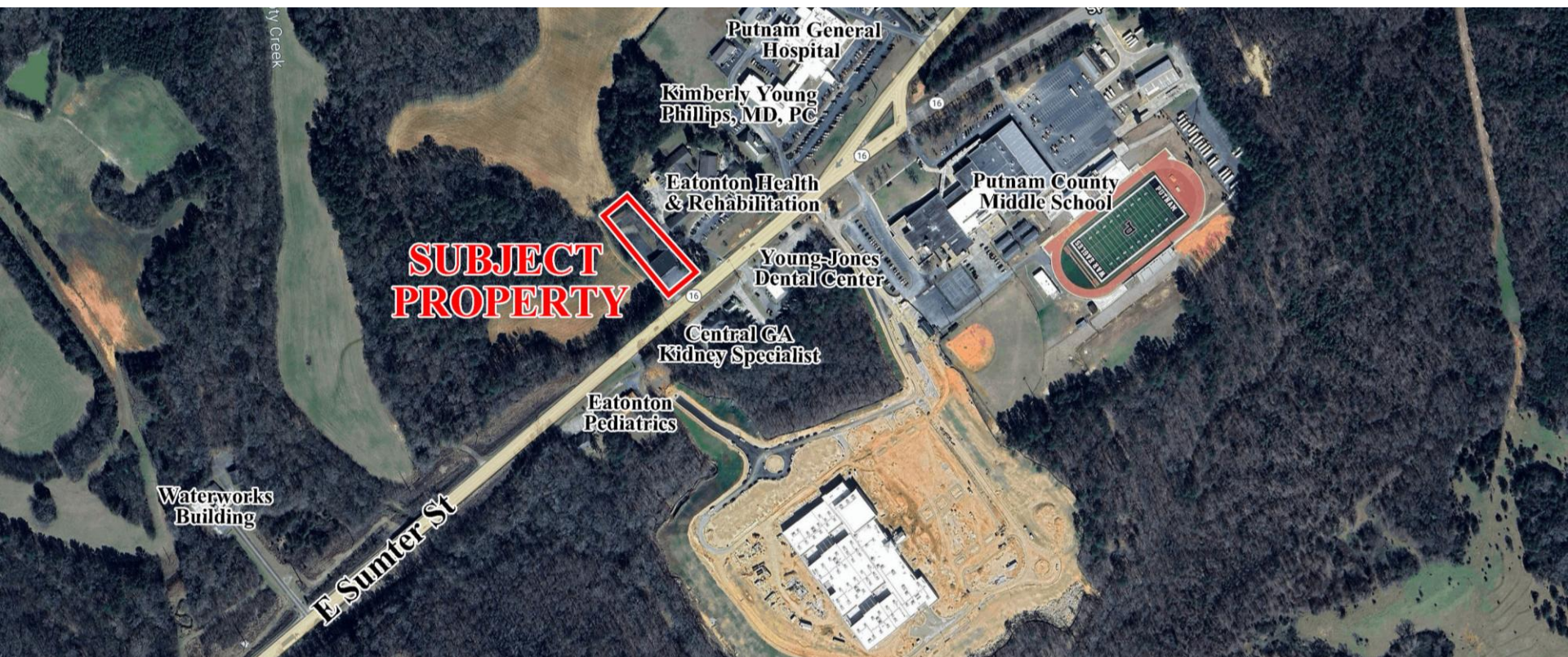
Photos

Floor Plans

Aerial

Site Map

SITE MAP



CONTACT

Patty Burns, CCIM, ALC
478-746-9421 Office
478-951-5100 Cell
patty@fickling.com

Trip Wilhoit, CCIM, ALC
478-746-9421 Office
478-960-4080 Cell
trip@fickling.com

Jonathan Schuemann
478-746-9421 Office
561-676-4633 Cell
jonathan@fickling.com



577 Mulberry St, Suite 1100
Macon, GA 31201
478.746.9421 Office
<https://commercial.fickling.com>