

MEDICAL OFFICE FOR LEASE

123 Sparta Highway
Eatonton, GA 31024



Summary

Area Info

Photos

Floor Plans

Aerial

Site Map



MOVE IN Special Offered
LEASE PRICE: \$12.00/SF NNN (est. \$2.01/SF)

CONTACT

Patty Burns, CCIM, ALC
478-746-9421 Office
478-951-5100 Cell
patty@fickling.com

Trip Wilhoit, CCIM, ALC
478-746-9421 Office
478-960-4080 Cell
trip@fickling.com

Jonathan Schuemann
478-746-9421 Office
561-676-4633 Cell
jonathan@fickling.com



577 Mulberry St, Suite 1100
Macon, GA 31201
478.746.9421 Office
<https://commercial.fickling.com>

This information is from resources deemed to be reliable and is subject to change without notice. No warranties or guarantees for accuracy are made by Fickling and Company.

MEDICAL OFFICE FOR LEASE

123 Sparta Highway
Eatonton, GA 31024



- Summary
- Area Info
- Photos
- Floor Plans
- Aerial
- Site Map

PROPERTY INFORMATION

BUILDING

Property Address: 123 Sparta Highway
Eatonton, GA 31024

County: Putnam

Total Size: 6,115 SF
Main Floor: 5,540 SF
Basement: 575 SF

Available: 575 - 6,115 SF

Utilities: All available

Parking: Paved, onsite

Traffic Count: Sparta Highway – 9,080 VPD

SITE

Site Size: 1 Acre

Parcel ID: 063 012

Zoning: C-2 City Commercial

Demographics 2024	1 Mile	3 Miles	5 Miles
Population	1,673	5,325	6,953
Avg HH Income	\$70,921	\$81,585	\$81,248
Median Age	37.1	36.7	37.5

MOVE IN Special Offered

LEASE PRICE: \$12.00/SF NNN (est. \$2.01/SF)

CONTACT

Patty Burns, CCIM, ALC
478-746-9421 Office
478-951-5100 Cell
patty@fickling.com

Trip Wilhoit, CCIM, ALC
478-746-9421 Office
478-960-4080 Cell
trip@fickling.com

Jonathan Schuemann
478-746-9421 Office
561-676-4633 Cell
jonathan@fickling.com



577 Mulberry St, Suite 1100
Macon, GA 31201
478.746.9421 Office
<https://commercial.fickling.com>

MEDICAL OFFICE FOR LEASE

123 Sparta Highway
Eatonton, GA 31024

[Summary](#)[Area Info](#)[Photos](#)[Floor Plans](#)[Aerial](#)[Site Map](#)

AREA INFORMATION

BUILDING

This 6,115 SF medical building is now available for lease! Excellent visibility with monument signage on Sparta Highway. Property main floor has 5,540 SF available, and has reception areas, waiting area, eight (8) offices, seven (7) exam rooms, nine (9) restrooms, two (2) utility rooms, break room, storage room, and closet. The basement area has 575 SF of space. Ideal for use as medical office, professional office, and any other business use.

LOCATION

Situated on Sparta Highway, approximately 1 mile from Downtown Eatonton. Nearby businesses include the Putnam General Hospital, Eatonton Health & Rehabilitation, Putnam Pediatrics, Central GA Kidney Specialist, Young-Jones Dental Center, Eatonton Pediatrics, and Putnam County Middle School.



CONTACT

Patty Burns, CCIM, ALC
478-746-9421 Office
478-951-5100 Cell
patty@fickling.com

Trip Wilhoit, CCIM, ALC
478-746-9421 Office
478-960-4080 Cell
trip@fickling.com

Jonathan Schuemann
478-746-9421 Office
561-676-4633 Cell
jonathan@fickling.com



577 Mulberry St, Suite 1100
Macon, GA 31201
478.746.9421 Office
<https://commercial.fickling.com>

MEDICAL OFFICE FOR LEASE

123 Sparta Highway
Eatonton, GA 31024



Summary

Area Info

Photos

Floor Plans

Aerial

Site Map



CONTACT

Patty Burns, CCIM, ALC
478-746-9421 Office
478-951-5100 Cell
patty@fickling.com

Trip Wilhoit, CCIM, ALC
478-746-9421 Office
478-960-4080 Cell
trip@fickling.com

Jonathan Schuemann
478-746-9421 Office
561-676-4633 Cell
jonathan@fickling.com



577 Mulberry St, Suite 1100
Macon, GA 31201
478.746.9421 Office
<https://commercial.fickling.com>

MEDICAL OFFICE FOR LEASE

123 Sparta Highway
Eatonton, GA 31024



Summary

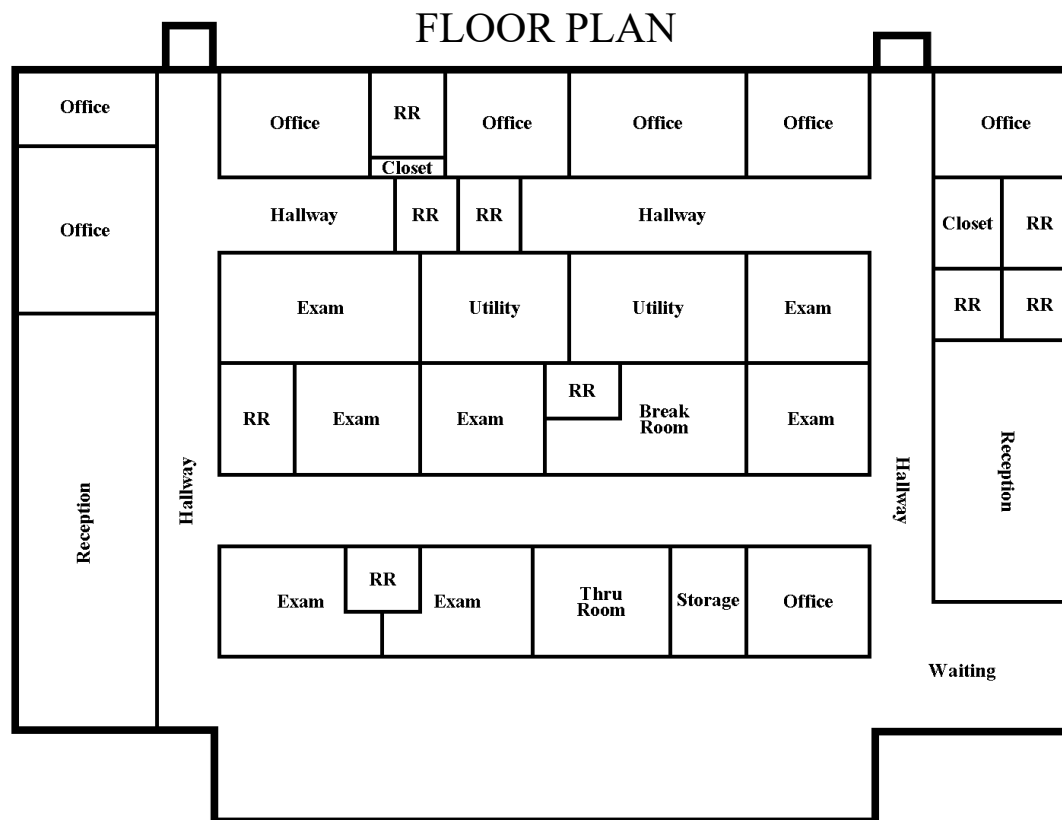
Area Info

Photos

Floor Plans

Aerial

Site Map



*All measurements and all calculations of area are approximate and not guaranteed

CONTACT

Patty Burns, CCIM, ALC
478-746-9421 Office
478-951-5100 Cell
patty@fickling.com

Trip Wilhoit, CCIM, ALC
478-746-9421 Office
478-960-4080 Cell
trip@fickling.com

Jonathan Schuemann
478-746-9421 Office
561-676-4633 Cell
jonathan@fickling.com



577 Mulberry St, Suite 1100
Macon, GA 31201
478.746.9421 Office
<https://commercial.fickling.com>

MEDICAL OFFICE FOR LEASE

123 Sparta Highway
Eatonton, GA 31024



Summary

Area Info

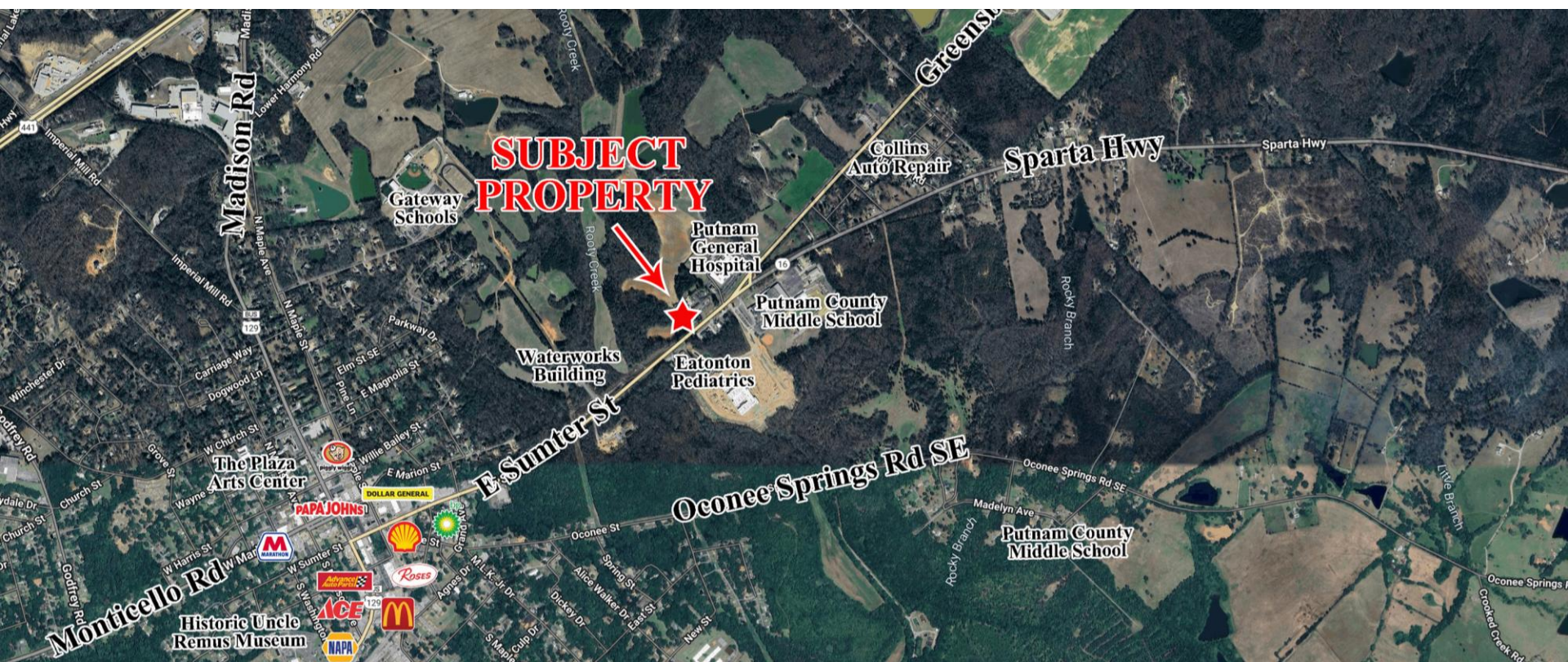
Photos

Floor Plans

Aerial

Site Map

AERIAL



CONTACT

Patty Burns, CCIM, ALC
478-746-9421 Office
478-951-5100 Cell
patty@fickling.com

Trip Wilhoit, CCIM, ALC
478-746-9421 Office
478-960-4080 Cell
trip@fickling.com

Jonathan Schuemann
478-746-9421 Office
561-676-4633 Cell
jonathan@fickling.com



577 Mulberry St, Suite 1100
Macon, GA 31201
478.746.9421 Office
<https://commercial.fickling.com>

MEDICAL OFFICE FOR LEASE

123 Sparta Highway
Eatonton, GA 31024



Summary

Area Info

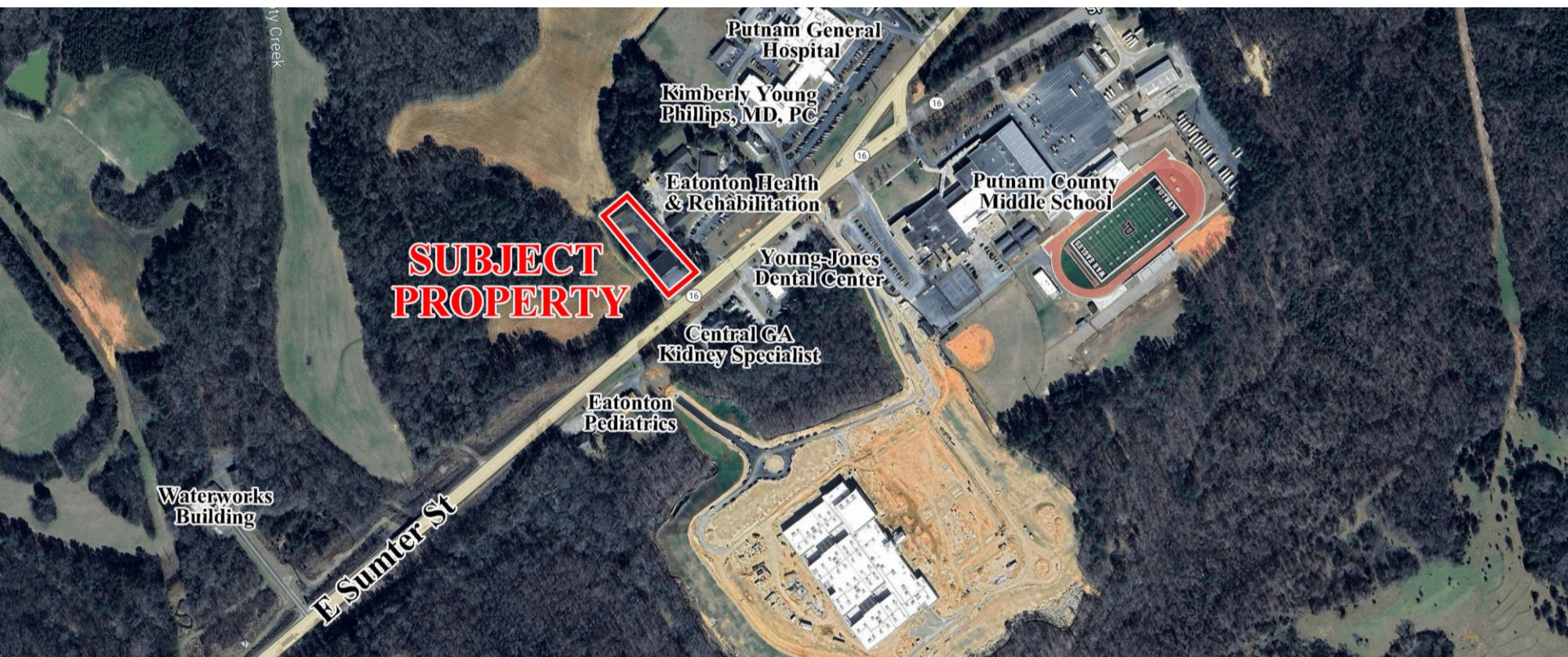
Photos

Floor Plans

Aerial

Site Map

SITE MAP



CONTACT

Patty Burns, CCIM, ALC
478-746-9421 Office
478-951-5100 Cell
patty@fickling.com

Trip Wilhoit, CCIM, ALC
478-746-9421 Office
478-960-4080 Cell
trip@fickling.com

Jonathan Schuemann
478-746-9421 Office
561-676-4633 Cell
jonathan@fickling.com



577 Mulberry St, Suite 1100
Macon, GA 31201
478.746.9421 Office
<https://commercial.fickling.com>