

# MEDICAL OFFICE FOR SALE

123 Sparta Highway  
Eatonton, GA 31024



Summary

Area Info

Photos

Floor Plans

Aerial

Site Map



## CONTACT

**Patty Burns, CCIM, ALC**  
478-746-9421 Office  
478-951-5100 Cell  
[patty@fickling.com](mailto:patty@fickling.com)

**Trip Wilhoit, CCIM, ALC**  
478-746-9421 Office  
478-960-4080 Cell  
[trip@fickling.com](mailto:trip@fickling.com)

**Jonathan Schuemann**  
478-746-9421 Office  
561-676-4633 Cell  
[jonathan@fickling.com](mailto:jonathan@fickling.com)



577 Mulberry St, Suite 1100  
Macon, GA 31201  
478.746.9421 Office  
<https://commercial.fickling.com>

This information is from resources deemed to be reliable and is subject to change without notice. No warranties or guarantees for accuracy are made by Fickling and Company.

PROPERTY INFORMATION

BUILDING

**Property Address:** 123 Sparta Highway  
Eatonton, GA 31024

**County:** Putnam

**Total Size:** 6,115 SF  
Main Floor: 5,540 SF  
Basement: 575 SF

**Utilities:** All available

**Parking:** Paved, onsite

**Traffic Count:** Sparta Highway – 9,080 VPD

SITE

**Site Size:** 1 Acre

**Parcel ID:** 063 012

**Zoning:** C-2 City Commercial

| Demographics 2024 | 1 Mile   | 3 Miles  | 5 Miles  |
|-------------------|----------|----------|----------|
| Population        | 1,673    | 5,325    | 6,953    |
| Avg HH Income     | \$70,921 | \$81,585 | \$81,248 |
| Median Age        | 37.1     | 36.7     | 37.5     |

REDUCED PRICE: \$649,000.00

~~SALE PRICE: \$949,000.00~~

CONTACT

**Patty Burns, CCIM, ALC**  
478-746-9421 Office  
478-951-5100 Cell  
patty@fickling.com

**Trip Wilhoit, CCIM, ALC**  
478-746-9421 Office  
478-960-4080 Cell  
trip@fickling.com

**Jonathan Schuemann**  
478-746-9421 Office  
561-676-4633 Cell  
jonathan@fickling.com



577 Mulberry St, Suite 1100  
Macon, GA 31201  
478.746.9421 Office  
<https://commercial.fickling.com>



# MEDICAL OFFICE FOR SALE

123 Sparta Highway  
Eatonton, GA 31024



Summary

Area Info

Photos

Floor Plans

Aerial

Site Map

## AREA INFORMATION

### BUILDING

This 6,115 SF medical building is now available for sale! Excellent visibility with monument signage on Sparta Highway. Property main floor has 5,540 SF, and has reception areas, waiting area, eight (8) offices, seven (7) exam rooms, nine (9) restrooms, two (2) utility rooms, break room, storage room, and closet. The basement area has 575 SF of space. Ideal for use as medical office, professional office, and any other business use.

### LOCATION

Situated on Sparta Highway, approximately 1 mile from Downtown Eatonton. Nearby businesses include the Putnam General Hospital, Eatonton Health & Rehabilitation, Putnam Pediatrics, Central GA Kidney Specialist, Young-Jones Dental Center, Eatonton Pediatrics, and Putnam County Middle School.



### CONTACT

**Patty Burns, CCIM, ALC**  
478-746-9421 Office  
478-951-5100 Cell  
[patty@fickling.com](mailto:patty@fickling.com)

**Trip Wilhoit, CCIM, ALC**  
478-746-9421 Office  
478-960-4080 Cell  
[trip@fickling.com](mailto:trip@fickling.com)

**Jonathan Schuemann**  
478-746-9421 Office  
561-676-4633 Cell  
[jonathan@fickling.com](mailto:jonathan@fickling.com)



577 Mulberry St, Suite 1100  
Macon, GA 31201  
478.746.9421 Office  
<https://commercial.fickling.com>

# MEDICAL OFFICE FOR SALE

123 Sparta Highway  
Eatonton, GA 31024



Summary

Area Info

Photos

Floor Plans

Aerial

Site Map



## CONTACT

**Patty Burns, CCIM, ALC**  
478-746-9421 Office  
478-951-5100 Cell  
[patty@fickling.com](mailto:patty@fickling.com)

**Trip Wilhoit, CCIM, ALC**  
478-746-9421 Office  
478-960-4080 Cell  
[trip@fickling.com](mailto:trip@fickling.com)

**Jonathan Schuemann**  
478-746-9421 Office  
561-676-4633 Cell  
[jonathan@fickling.com](mailto:jonathan@fickling.com)



577 Mulberry St, Suite 1100  
Macon, GA 31201  
478.746.9421 Office  
<https://commercial.fickling.com>

# MEDICAL OFFICE FOR SALE

123 Sparta Highway  
Eatonton, GA 31024



Summary

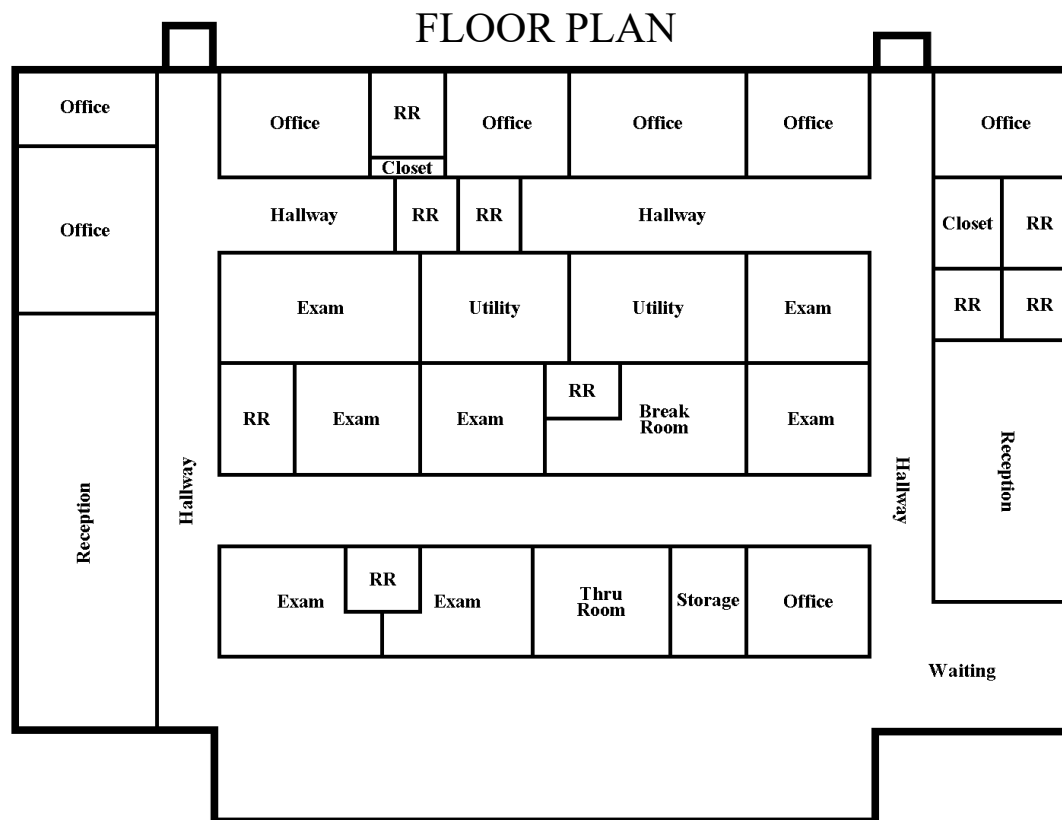
Area Info

Photos

Floor Plans

Aerial

Site Map



\*All measurements and all calculations of area are approximate and not guaranteed

## CONTACT

**Patty Burns, CCIM, ALC**  
478-746-9421 Office  
478-951-5100 Cell  
[patty@fickling.com](mailto:patty@fickling.com)

**Trip Wilhoit, CCIM, ALC**  
478-746-9421 Office  
478-960-4080 Cell  
[trip@fickling.com](mailto:trip@fickling.com)

**Jonathan Schuemann**  
478-746-9421 Office  
561-676-4633 Cell  
[jonathan@fickling.com](mailto:jonathan@fickling.com)



577 Mulberry St, Suite 1100  
Macon, GA 31201  
478.746.9421 Office  
<https://commercial.fickling.com>



# MEDICAL OFFICE FOR SALE

123 Sparta Highway  
Eatonton, GA 31024



Summary

Area Info

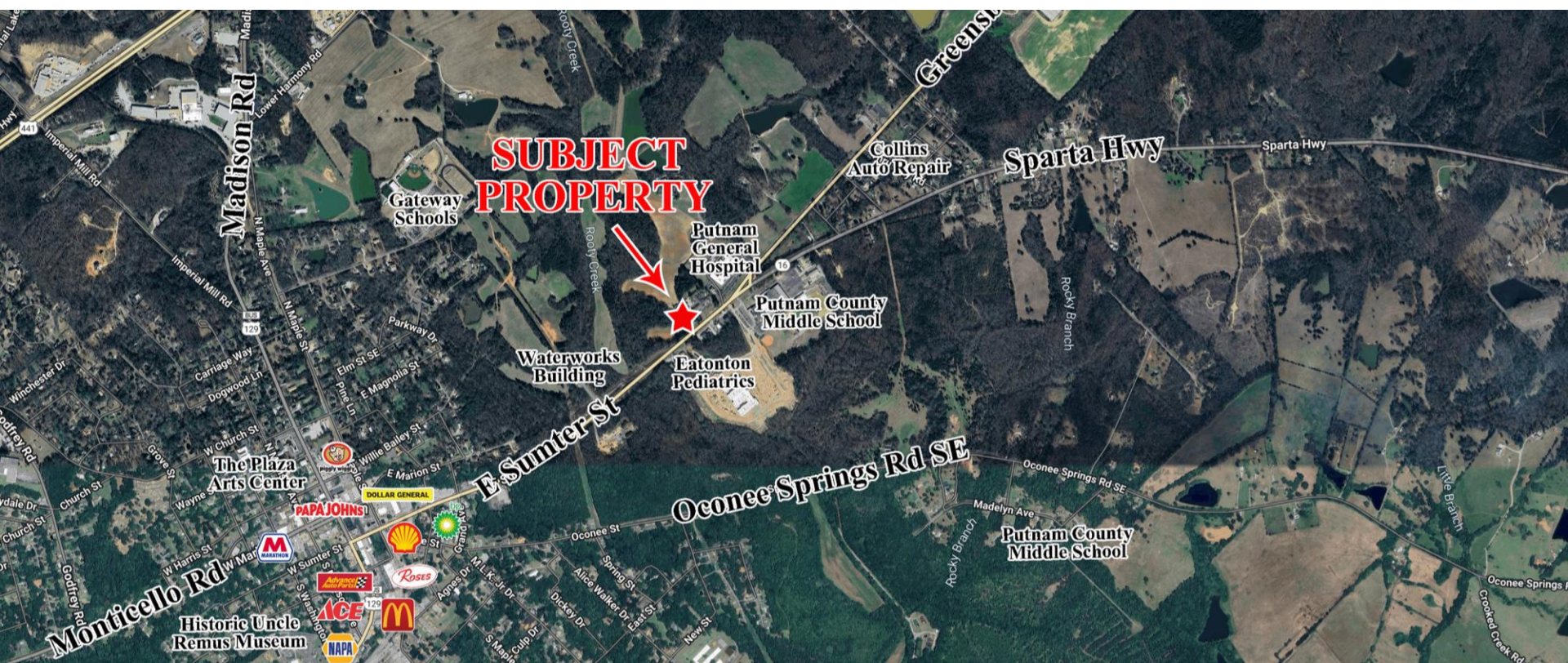
Photos

Floor Plans

Aerial

Site Map

## AERIAL



### CONTACT

**Patty Burns, CCIM, ALC**  
478-746-9421 Office  
478-951-5100 Cell  
[patty@fickling.com](mailto:patty@fickling.com)

**Trip Wilhoit, CCIM, ALC**  
478-746-9421 Office  
478-960-4080 Cell  
[trip@fickling.com](mailto:trip@fickling.com)

**Jonathan Schuemann**  
478-746-9421 Office  
561-676-4633 Cell  
[jonathan@fickling.com](mailto:jonathan@fickling.com)



577 Mulberry St, Suite 1100  
Macon, GA 31201  
478.746.9421 Office  
<https://commercial.fickling.com>



# MEDICAL OFFICE FOR SALE

123 Sparta Highway  
Eatonton, GA 31024



Summary

Area Info

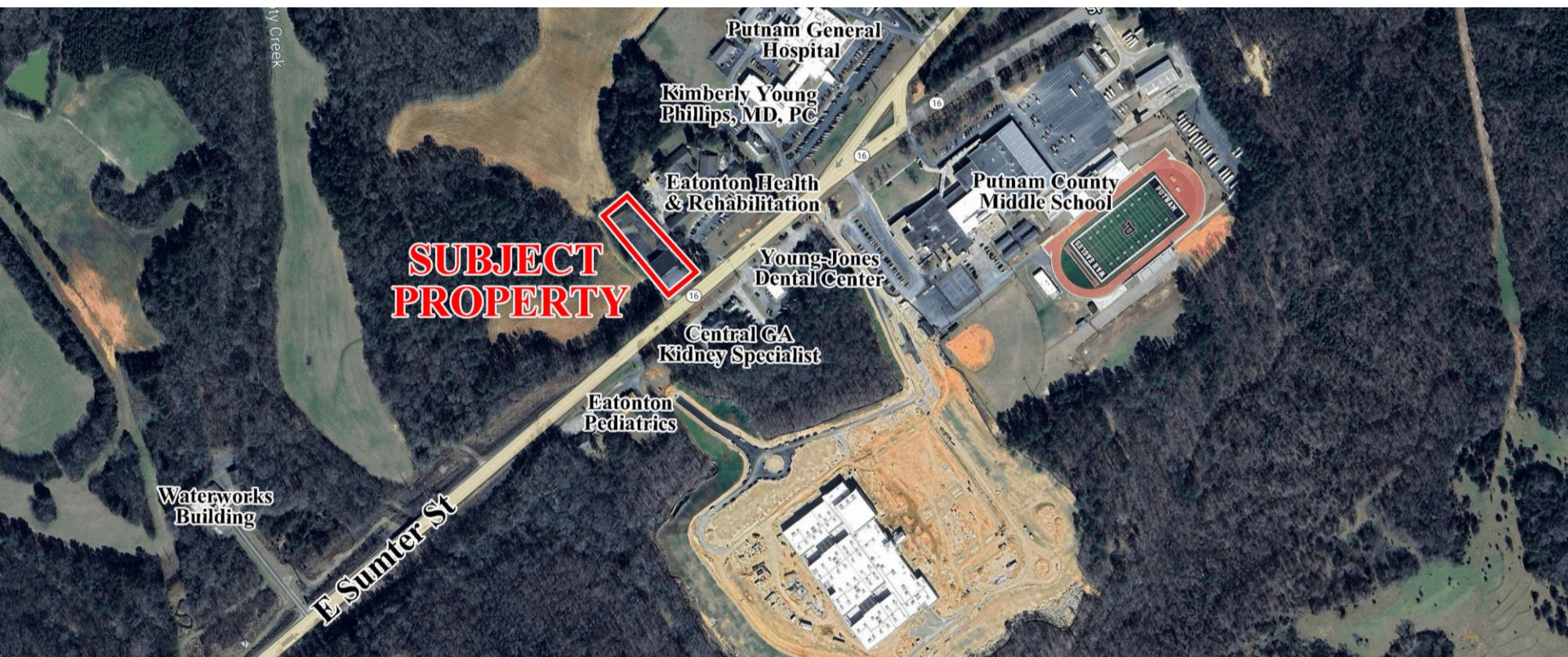
Photos

Floor Plans

Aerial

Site Map

## SITE MAP



### CONTACT

**Patty Burns, CCIM, ALC**  
478-746-9421 Office  
478-951-5100 Cell  
[patty@fickling.com](mailto:patty@fickling.com)

**Trip Wilhoit, CCIM, ALC**  
478-746-9421 Office  
478-960-4080 Cell  
[trip@fickling.com](mailto:trip@fickling.com)

**Jonathan Schuemann**  
478-746-9421 Office  
561-676-4633 Cell  
[jonathan@fickling.com](mailto:jonathan@fickling.com)



577 Mulberry St, Suite 1100  
Macon, GA 31201  
478.746.9421 Office  
<https://commercial.fickling.com>