

For Lease

# Lee World Center

297 - 3,575 SF | \$26.50 / SF



## 1850 Lee Road

Winter Park, Florida 32789

### Property Highlights

- 136,747± SF, three-story office building with 2 elevators
- Full-service building with ample parking: 242 spaces on 3.14± acre site
- 24-hour access with evening building attendant
- Great location midway between I-4 and US Hwy 17-92; only 2 minutes to I-4 on-ramp
- Very close to Winter Park Village and downtown Winter Park
- Close to restaurants, banks and shopping
- Zoning: O-1 (Office)
- Easy access to Lee Road, I-4, US Hwy 17-92, Morse Blvd, Fairbanks Avenue and Orange Avenue

### AVAILABLE SPACES

Space	Size (RSF)
Suite 103-1	297
Suite 108	441
Suite 112	850
Suite 115	866
Suite 209	487
Suite 300	2,244
Suite 307	521
Suite 308	480
Suite 309	1,111
Suite 334	3,575

**Lease Rate: \$26.50/SF Full Service**

For more information

**Jeffrey Bloom, CCIM**

O: 407 949 0709

[jbloom@realvest.com](mailto:jbloom@realvest.com)



01.20.26

The information contained herein has been given to us by the owner of the property or other sources we deem reliable. We have no reason to doubt its accuracy, but we do not guarantee it. All information should be verified prior to purchase or lease. Unless otherwise noted, the property is being offered as-is, where is, with all faults.

1800 Pembroke Drive, Suite 350

Orlando, FL 32810

407 875 9989 tel

[nairealvest.com](http://nairealvest.com)

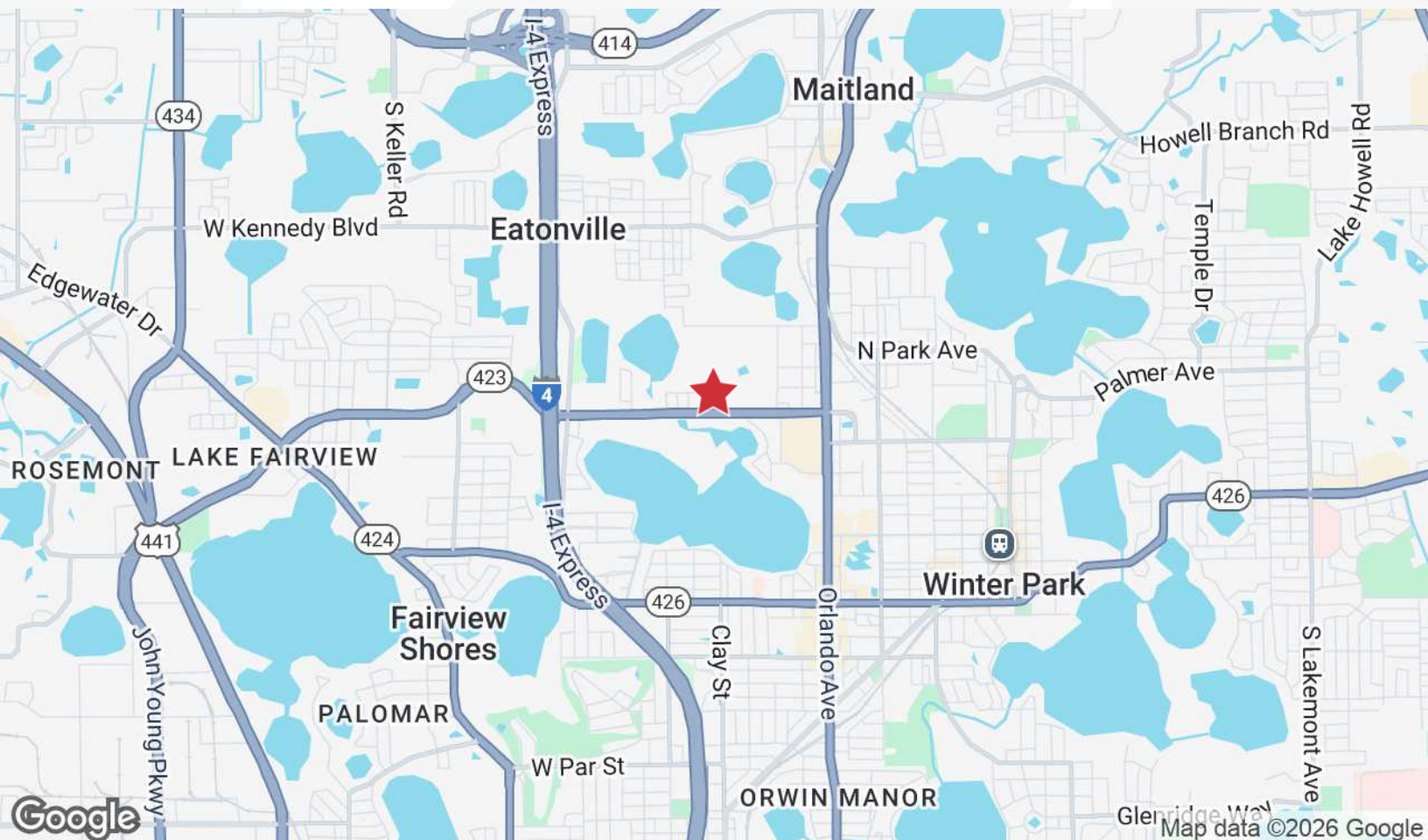


## Property Photos





# Location Maps



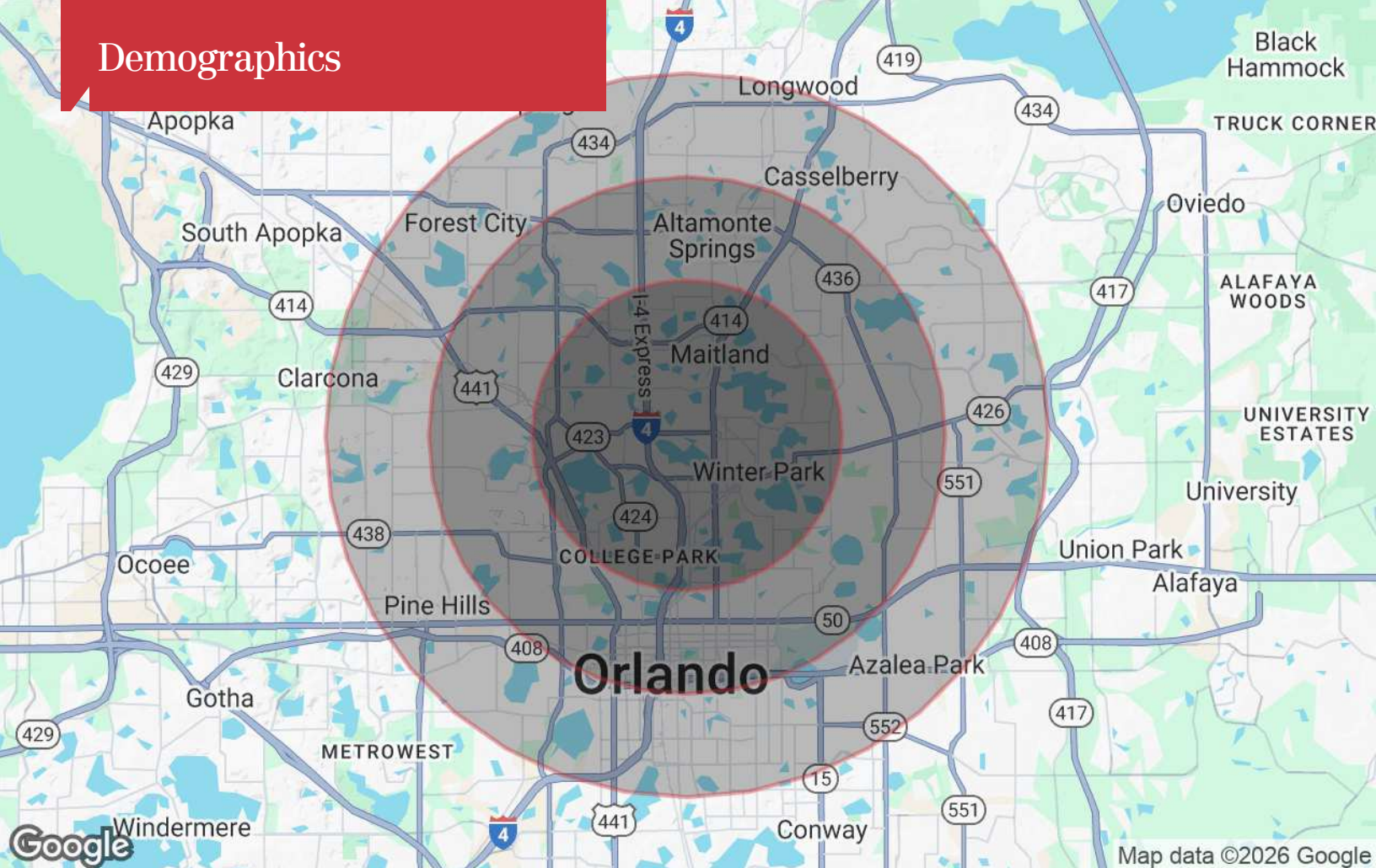
The information contained herein has been given to us by the owner of the property or other sources we deem reliable. We have no reason to doubt its accuracy, but we do not guarantee it. All information should be verified prior to purchase or lease. Unless otherwise noted, the property is being offered as-is, where is, with all faults.

**NAI Realvest**

1800 Pembroke Drive, Suite 350  
Orlando, FL 32810  
407 875 9989 tel  
[nairealvest.com](http://nairealvest.com)

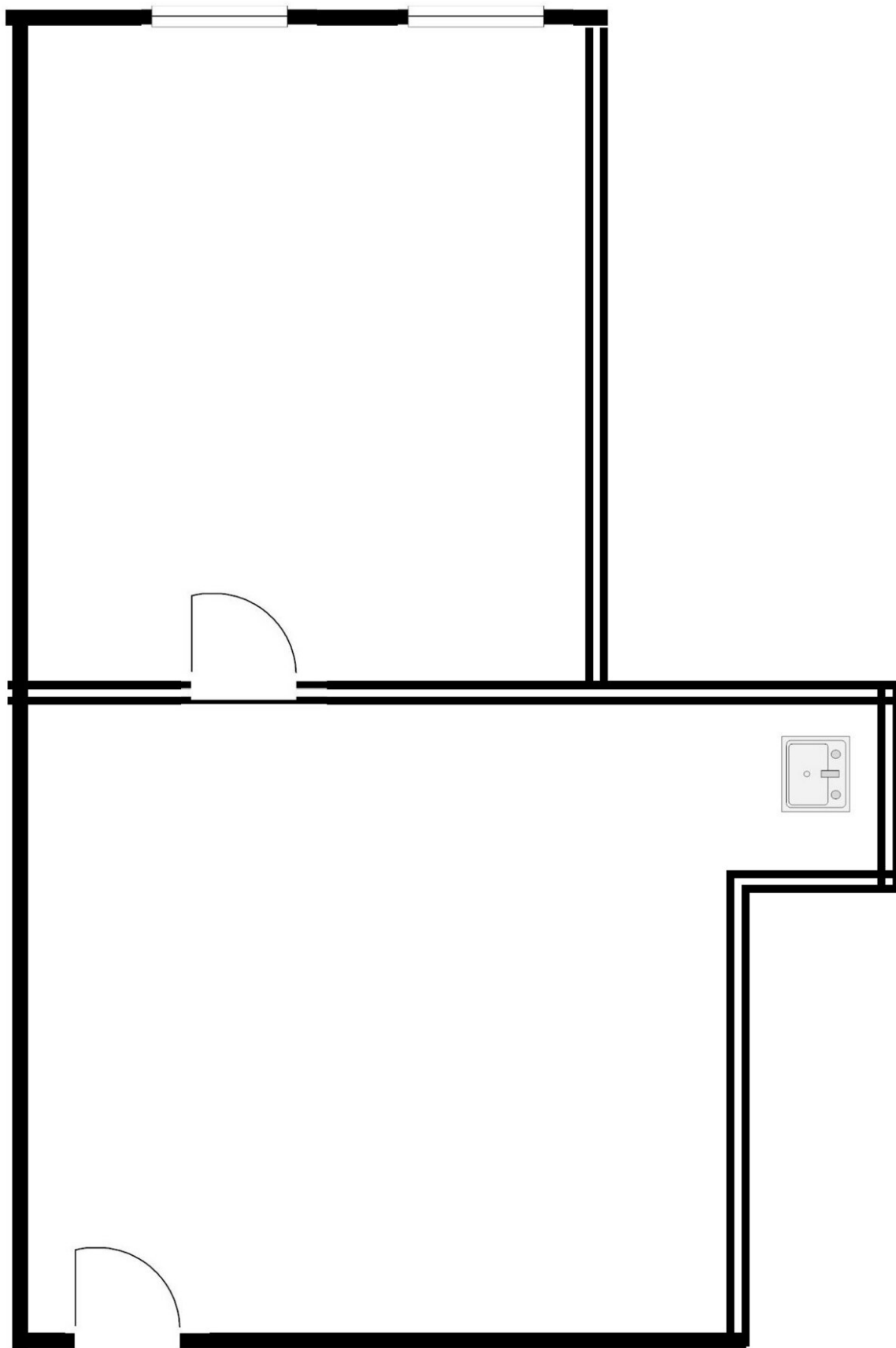


## Demographics

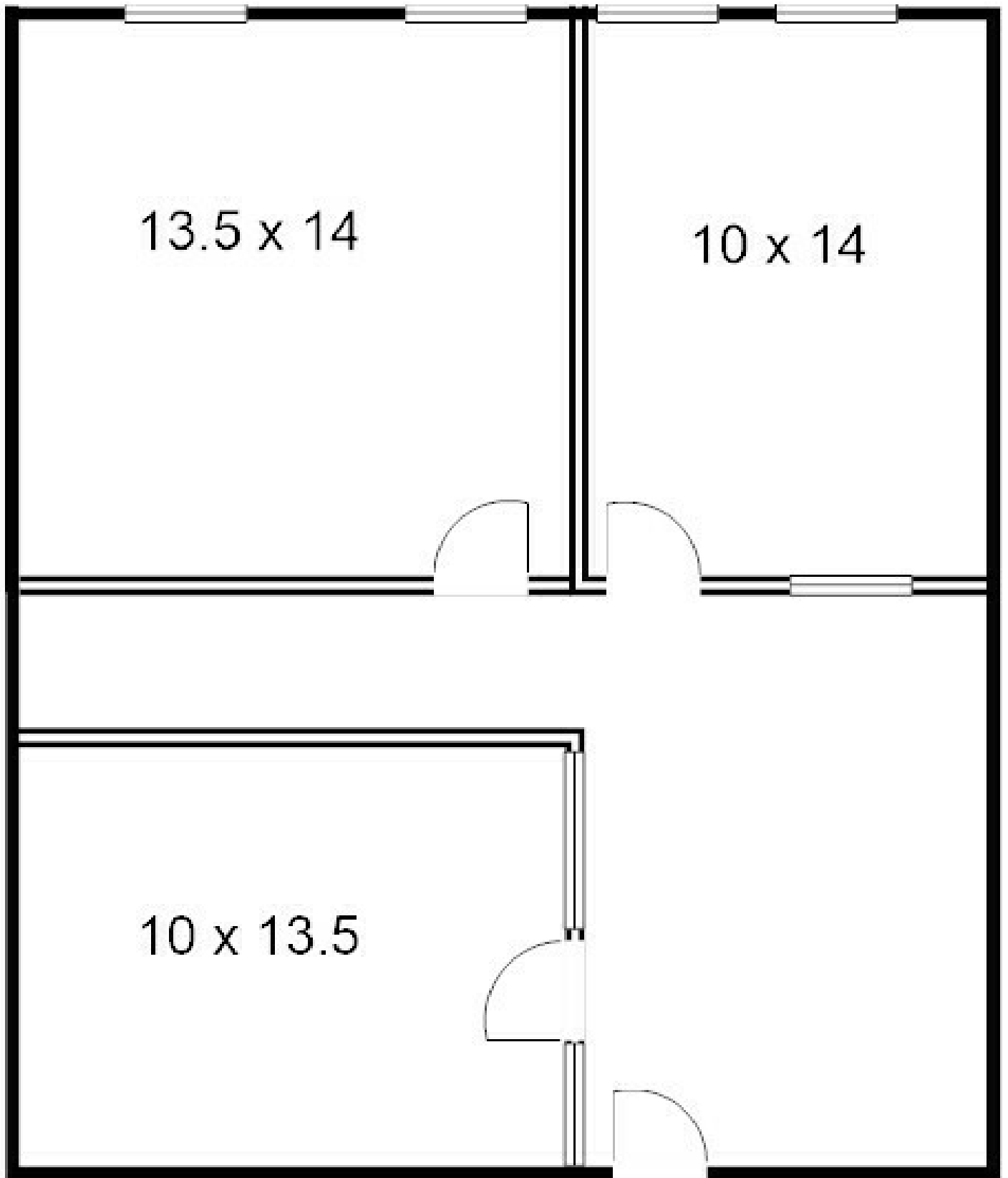


Population	3 Miles	5 Miles	7 Miles
TOTAL POPULATION	80,793	275,550	552,635
MEDIAN AGE	42	41	41
MEDIAN AGE (MALE)	41	40	39
MEDIAN AGE (FEMALE)	43	42	42
Households & Income	3 Miles	5 Miles	7 Miles
TOTAL HOUSEHOLDS	35,980	122,499	227,080
# OF PERSONS PER HH	2.2	2.2	2.4
AVERAGE HH INCOME	\$132,782	\$107,373	\$94,609
AVERAGE HOUSE VALUE	\$615,943	\$486,886	\$412,694

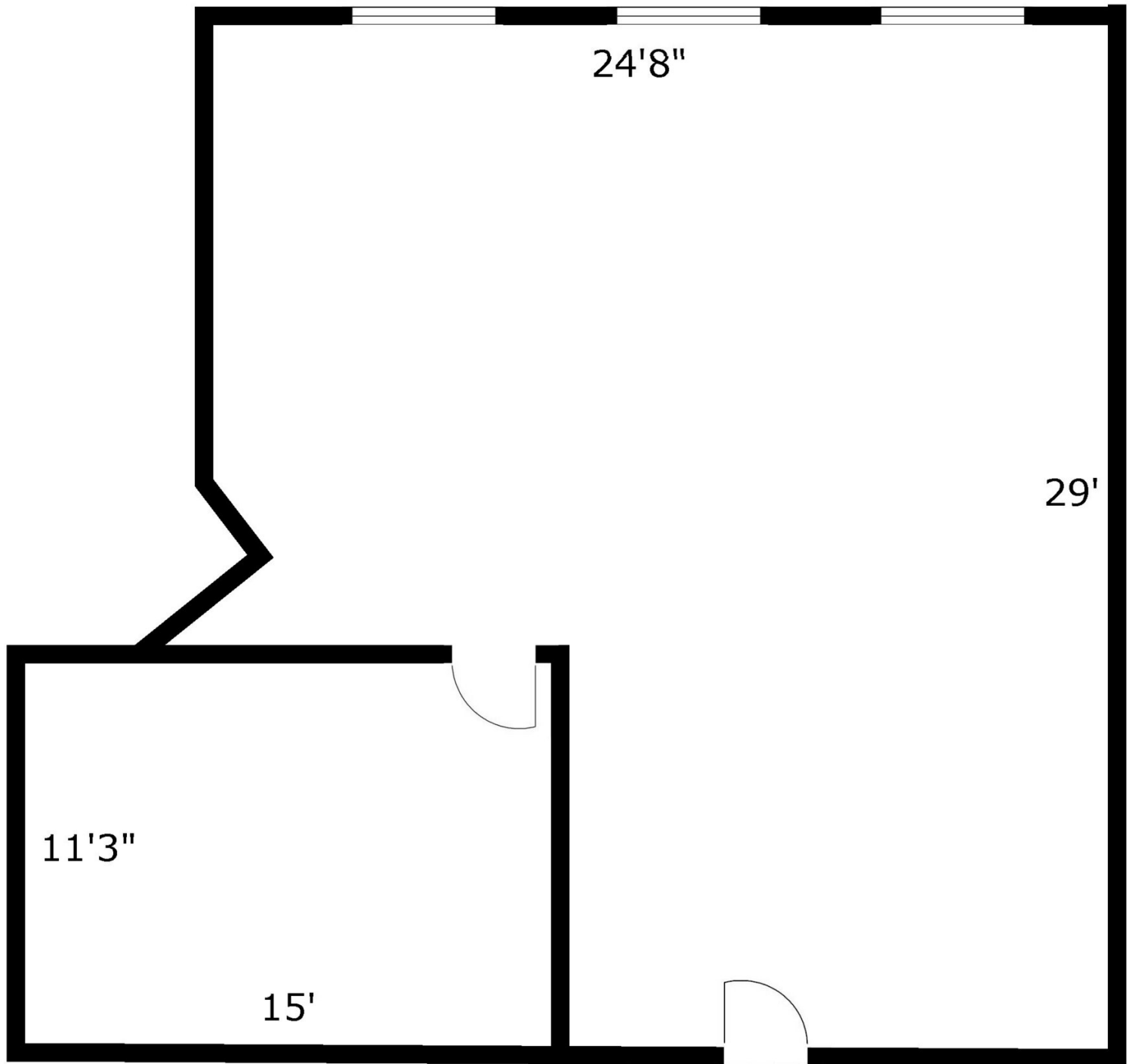
Suite 108 - 441± SF



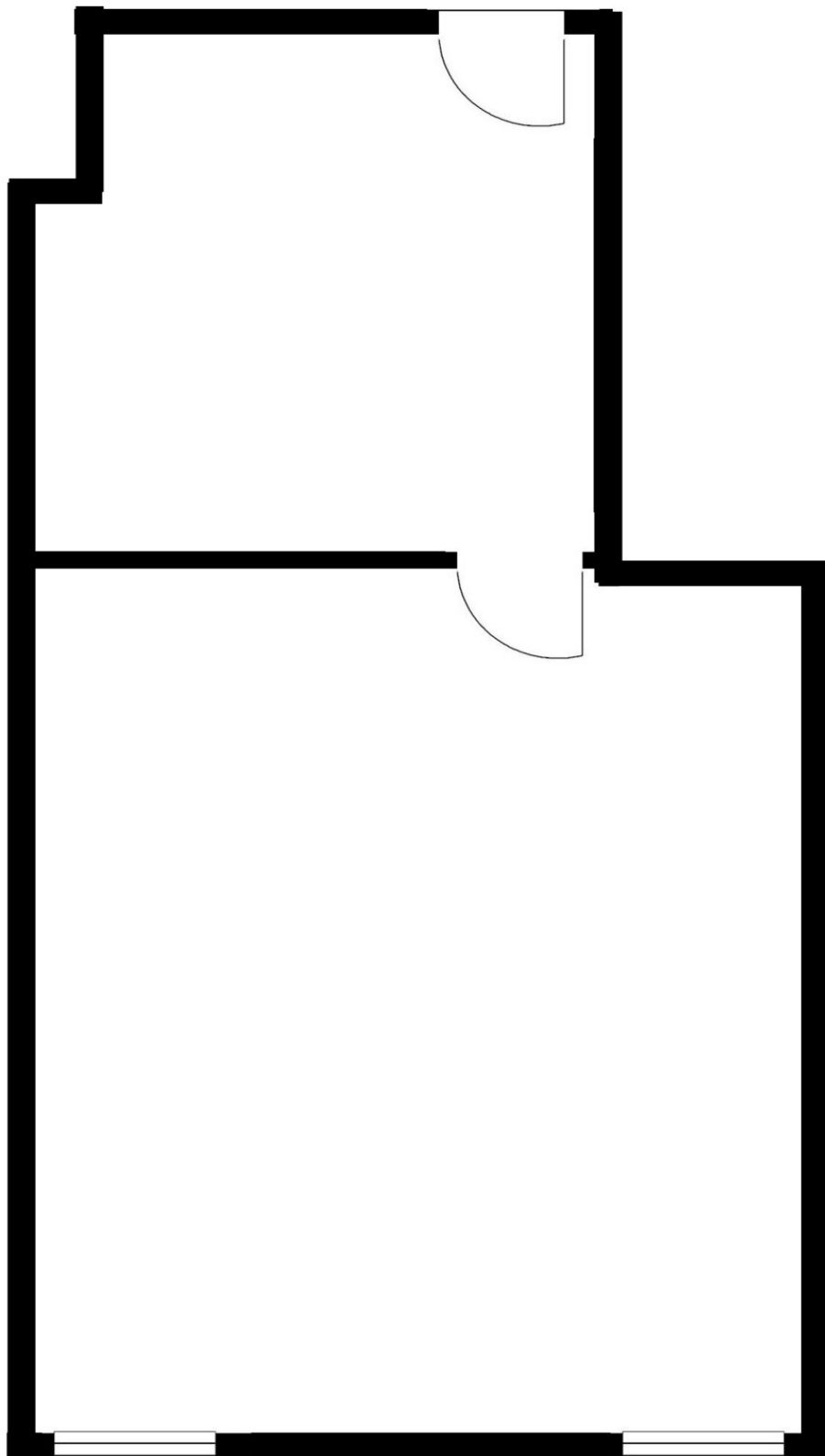
Suite 112 - 850± SF



Suite 115 - 866± SF

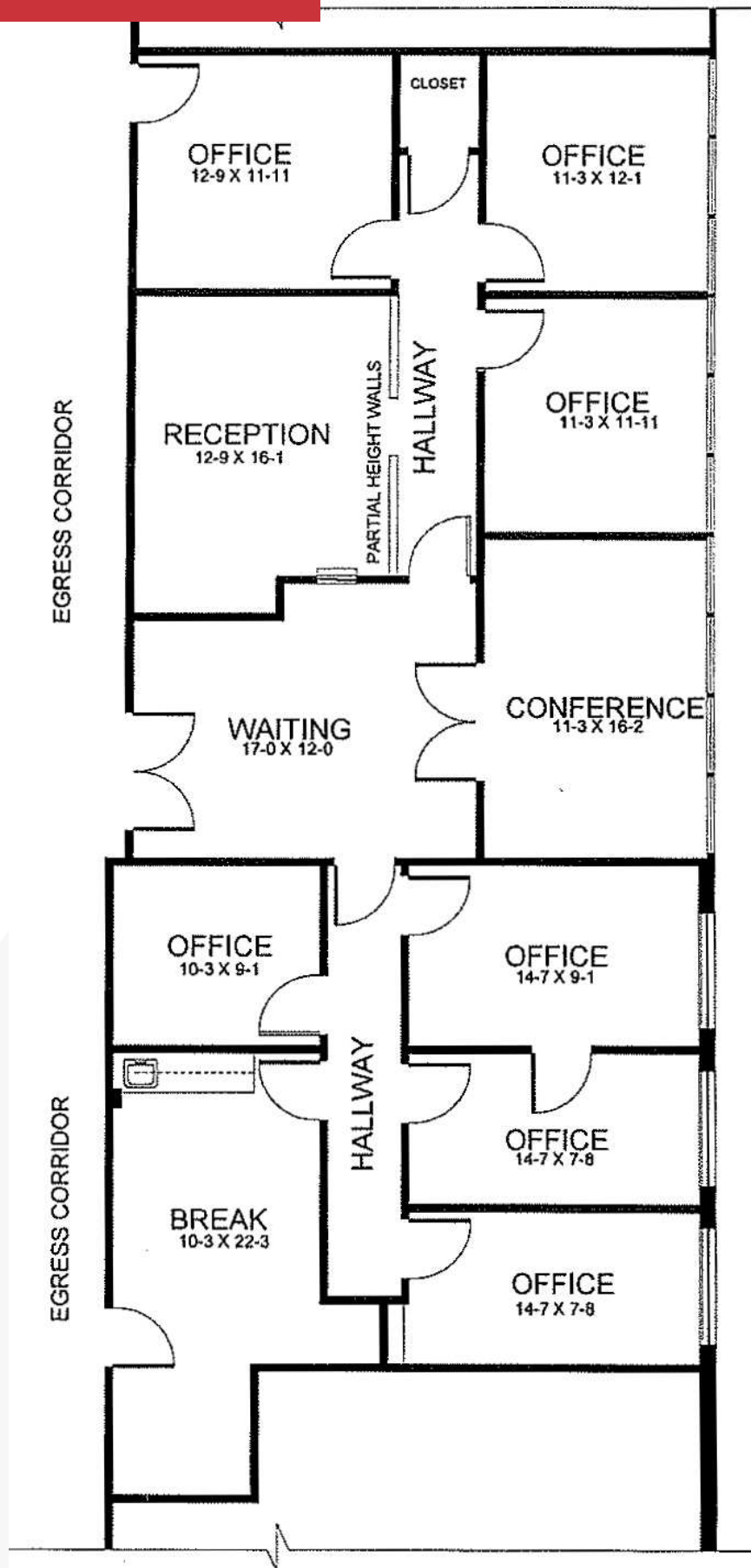


Suite 209 - 487± SF

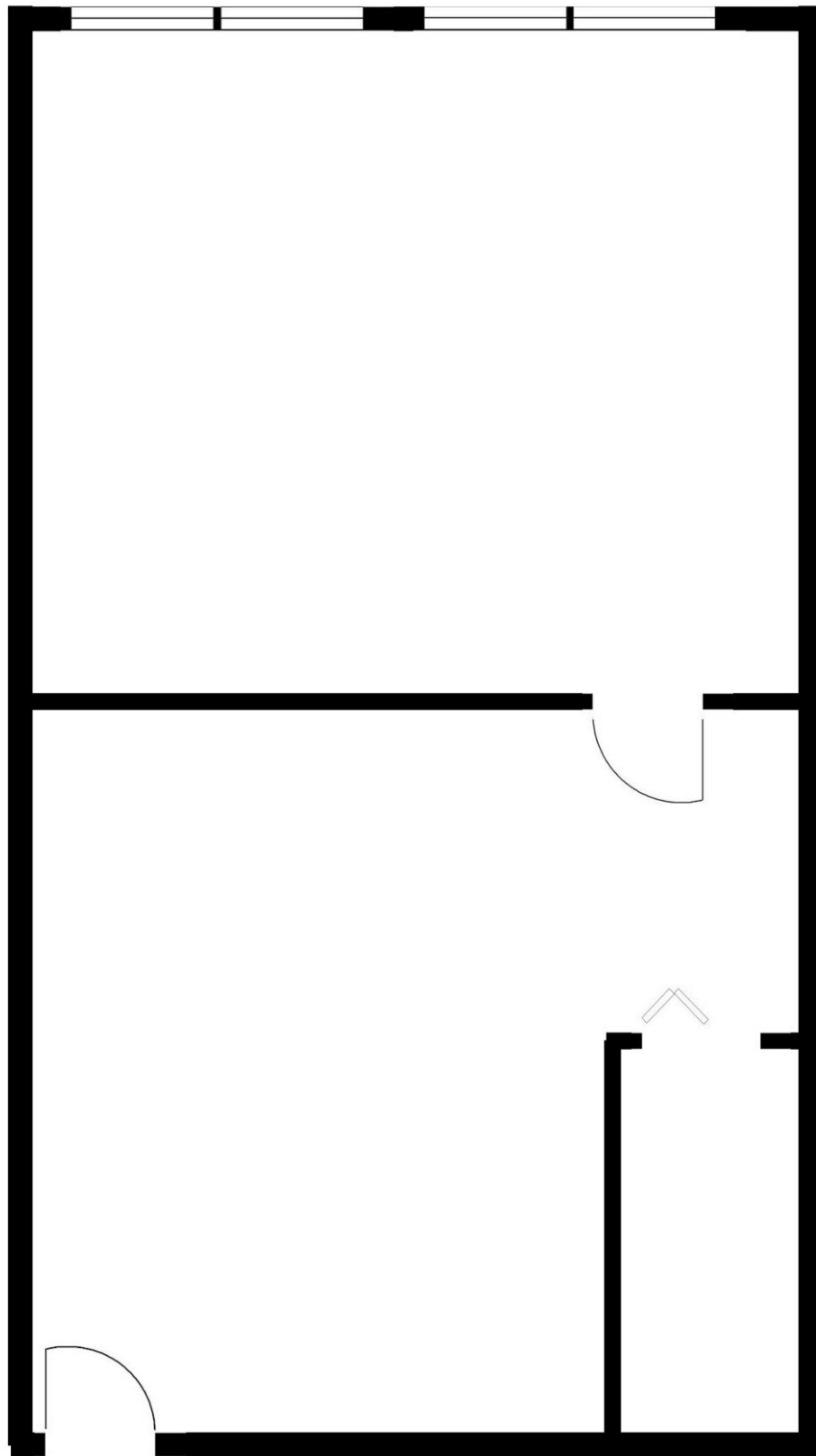




Suite 300 - 2,224± SF



Suite 307 - 521± SF





Suite 309 - 1,111± RSF

