

Hunt Industrial



FLEX / WAREHOUSE SPACE FOR LEASE

15430 County Road 565A, Groveland, FL 34736

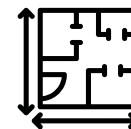
Contact: Bryan Richardson
 Senior Sales & Leasing Associate

E: Bryan@FCPG.com
 P: 407.872.0177 ext. 137

For Lease: \$16.00 - \$16.50 / SF, NNN

± 900 - 8,100 SF Available

Zoning: M-1, Light Industrial



**VARIED SUITE
 LAYOUTS AVAILABLE**

Suites Feature Grade Level Loading and 12'x14' Roll-Up Doors.
 2 Shared Dock-High Loading/Unloading Bays in the Park

Diverse users within 17-Building, 200,000 SF Small-Bay Industrial
 Park, the largest in South Lake County

On-Site Management Services, Directory Signage and Shared
 Wifi throughout park

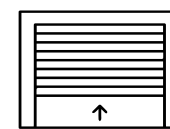
Entire property is fenced and secured with gate code access
 at three separate points across property

Varied suite sizes and features available allowing for high
 degree of flexibility and customization

Ideally Situated near SR 50, Highway 27 and Florida's Turnpike
 for easy access to Greater Central Florida



**SECURE GATED
 PROPERTY**



**12'x14' ROLL-
 UP DOORS**

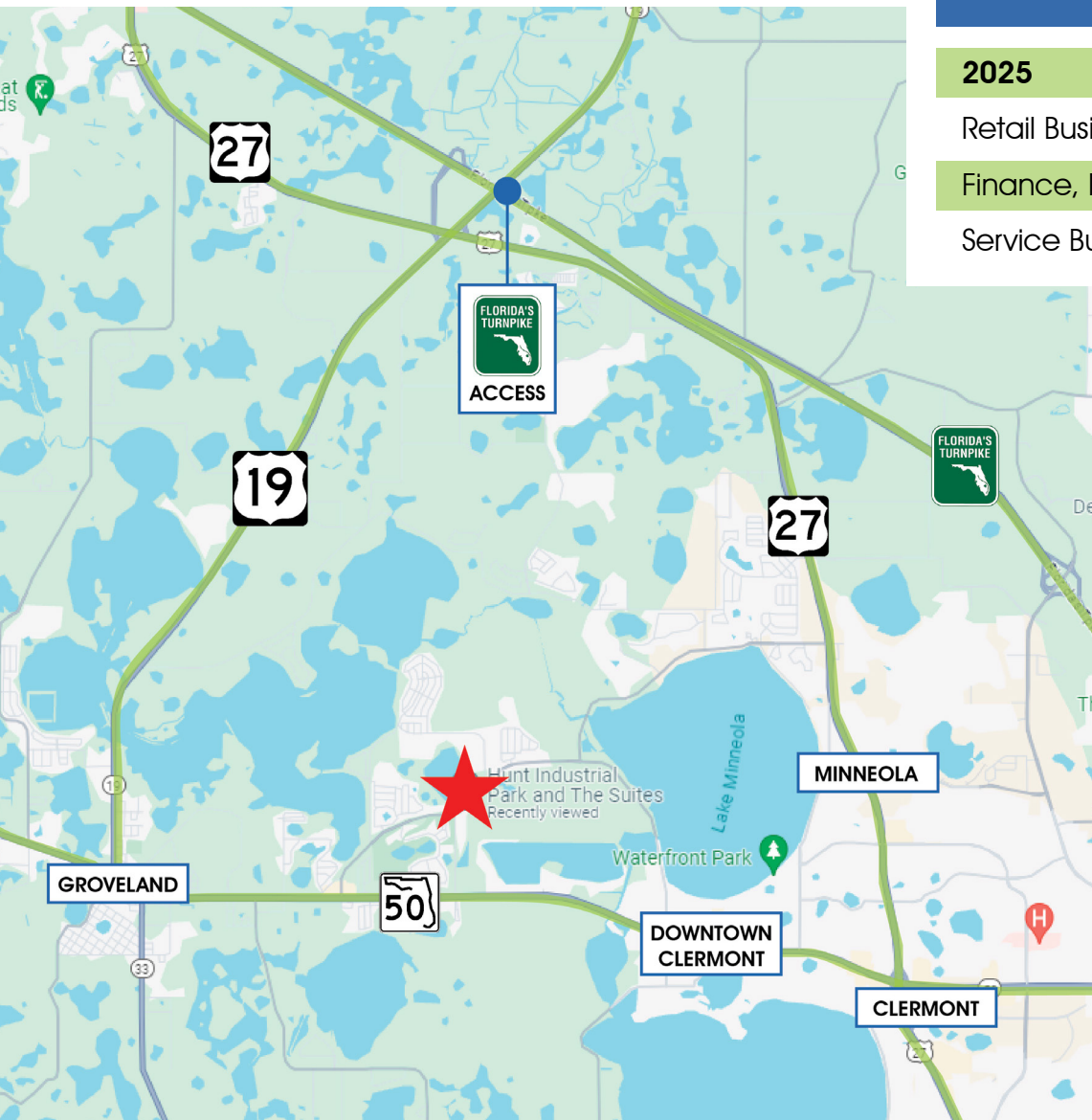


**GRADE-LEVEL
 ACCESS**

■ 615 E. Colonial Dr., Orlando, FL 32803 ■ Phone: 407.872.0209 ■ www.FCPG.com ■

Information furnished regarding the subject property is believed to be accurate, but no guarantee or representation is made. References to square footage are approximate. This offering is subject to errors, omissions, prior sale or lease or withdrawal without notice. ©2026 First Capital Property Group, Licensed Real Estate Brokers & Managers.

LOCATION



Surrounding Businesses

2025	5 Mins	10 Mins	15 Mins
Retail Businesses	34	253	575
Finance, Insurance, & Real Estate Businesses	9	126	274
Service Businesses	52	548	1,291

Drive Times & Traffic Counts



2 minutes
(1 mile)



5 minutes
(3.2 miles)



9 minutes
(4.9 miles)



13 minutes
(7.3 miles)

DEMOGRAPHICS

2025



Total Population



Total Households



Average HH Income

5 Mins

5,997

2,105

\$125,450

10 Mins

27,364

9,937

\$107,463

15 Mins

78,585

28,617

\$103,634

615 E. Colonial Dr., Orlando, FL 32803 Phone: 407.872.0209 www.FCPG.com

Information furnished regarding the subject property is believed to be accurate, but no guarantee or representation is made. References to square footage are approximate. This offering is subject to errors, omissions, prior sale or lease or withdrawal without notice. ©2026 First Capital Property Group, Licensed Real Estate Brokers & Managers.

SITE PLAN



■ 615 E. Colonial Dr., Orlando, FL 32803 ■ Phone: 407.872.0209 ■ www.FCPG.com ■

Information furnished regarding the subject property is believed to be accurate, but no guarantee or representation is made. References to square footage are approximate. This offering is subject to errors, omissions, prior sale or lease or withdrawal without notice. ©2026 First Capital Property Group, Licensed Real Estate Brokers & Managers.

AVAILABILITY

Building	Suite	Square Footage	\$/SF Rate	Availability	Suite Details	Accessibility
1502	E	2,400 SF	\$16.00	30 Days	1,500 SF Warehouse 900 SF A/C Office	(1) 12'x14' Bay Door (1) Standard Double Door Entry (1) Standard Single Door
1506	A	2,400 SF	\$16.00	Now	1,796 SF Warehouse 604 SF A/C Office	(1) 12'x14' Bay Door (2) Standard Single Door
1508	A/B	8,100 SF	Call for Rate	30 Days	6,900 SF Warehouse 1,200 SF Office	(4) 12'x14' Bay Door (3) Standard Single Door (1) Standard Double Door Entry
15400	C	1,200 SF	\$16.50	30 Days	1,000 SF Warehouse 200 SF A/C Office	(2) 12'x14' Bay Door (1) Standard Single Door
15410	E	2,800 SF	\$16.00	Now	Store Front with A/C Offices 600 SF A/C Warehouse	(3) Standard Double Door Entry

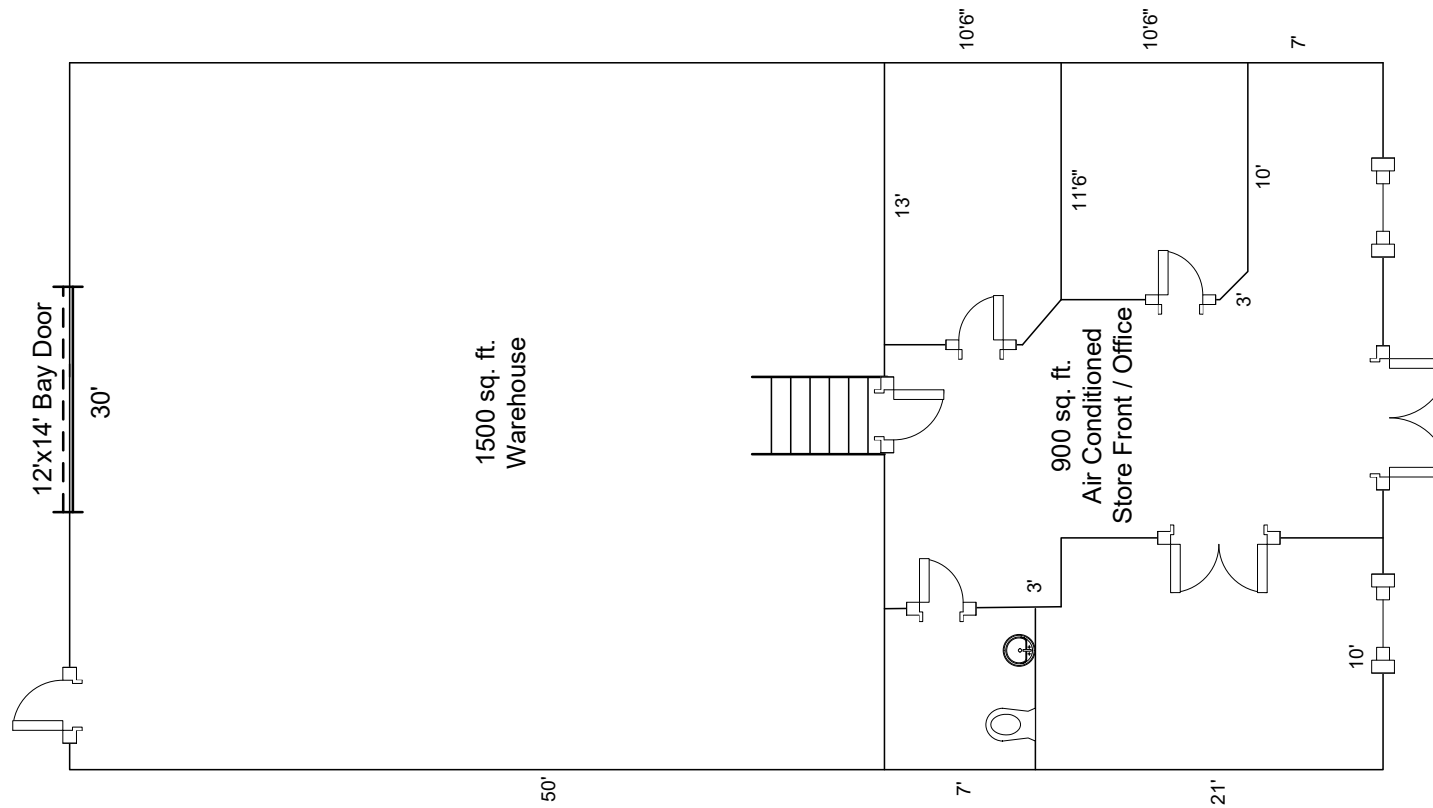
SHARED DOCK HIGH BAY



■ 615 E. Colonial Dr., Orlando, FL 32803 ■ Phone: 407.872.0209 ■ www.FCPG.com ■

Information furnished regarding the subject property is believed to be accurate, but no guarantee or representation is made. References to square footage are approximate. This offering is subject to errors, omissions, prior sale or lease or withdrawal without notice. ©2026 First Capital Property Group, Licensed Real Estate Brokers & Managers.

SUITE 1502 E: 2,400 SF



615 E. Colonial Dr., Orlando, FL 32803 Phone: 407.872.0209 www.FCPG.com

Information furnished regarding the subject property is believed to be accurate, but no guarantee or representation is made. References to square footage are approximate. This offering is subject to errors, omissions, prior sale or lease or withdrawal without notice. ©2026 First Capital Property Group, Licensed Real Estate Brokers & Managers.



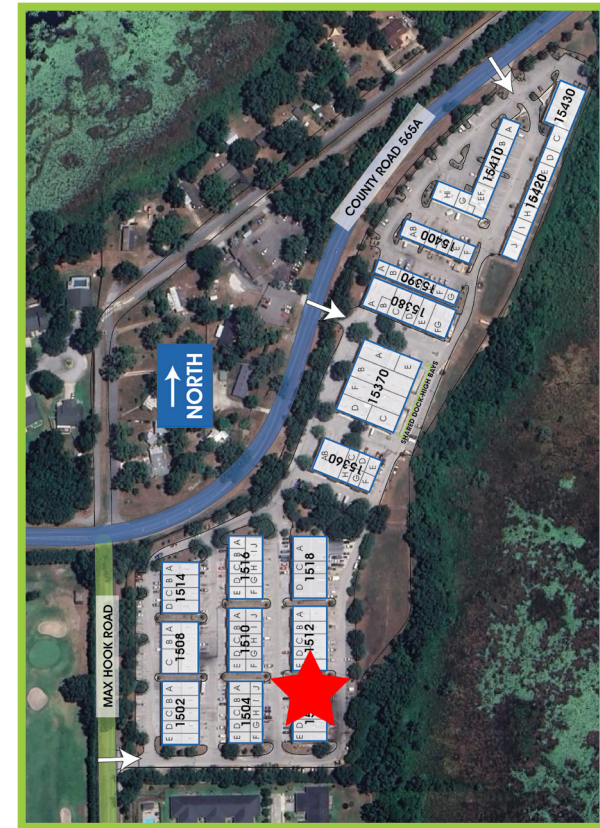
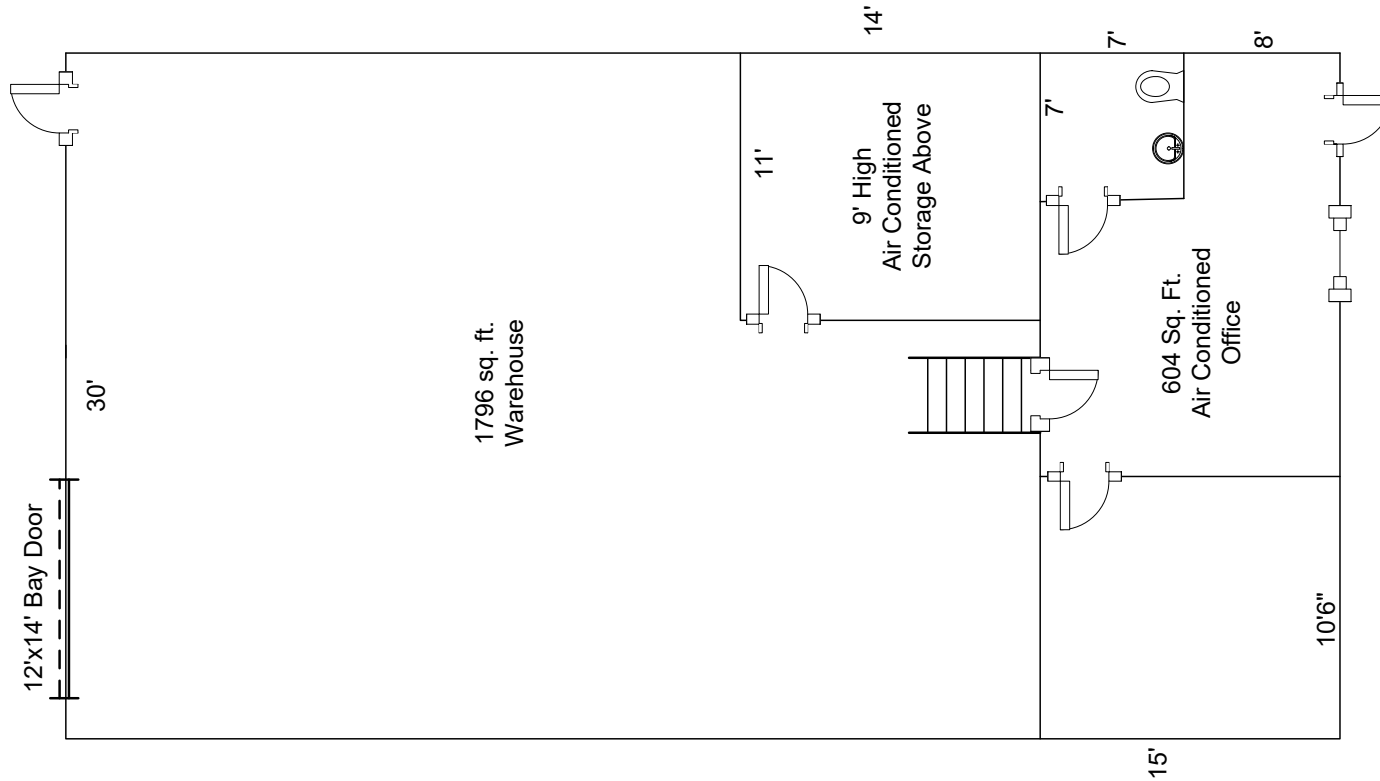
SUITE 1502 E: 2,400 SF



■ 615 E. Colonial Dr., Orlando, FL 32803 ■ Phone: 407.872.0209 ■ www.FCPG.com ■

Information furnished regarding the subject property is believed to be accurate, but no guarantee or representation is made. References to square footage are approximate. This offering is subject to errors, omissions, prior sale or lease or withdrawal without notice. ©2026 First Capital Property Group, Licensed Real Estate Brokers & Managers.

SUITE 1506 A: 2,400 SF



615 E. Colonial Dr., Orlando, FL 32803 Phone: 407.872.0209 www.FCPG.com

Information furnished regarding the subject property is believed to be accurate, but no guarantee or representation is made. References to square footage are approximate. This offering is subject to errors, omissions, prior sale or lease or withdrawal without notice. ©2026 First Capital Property Group, Licensed Real Estate Brokers & Managers.

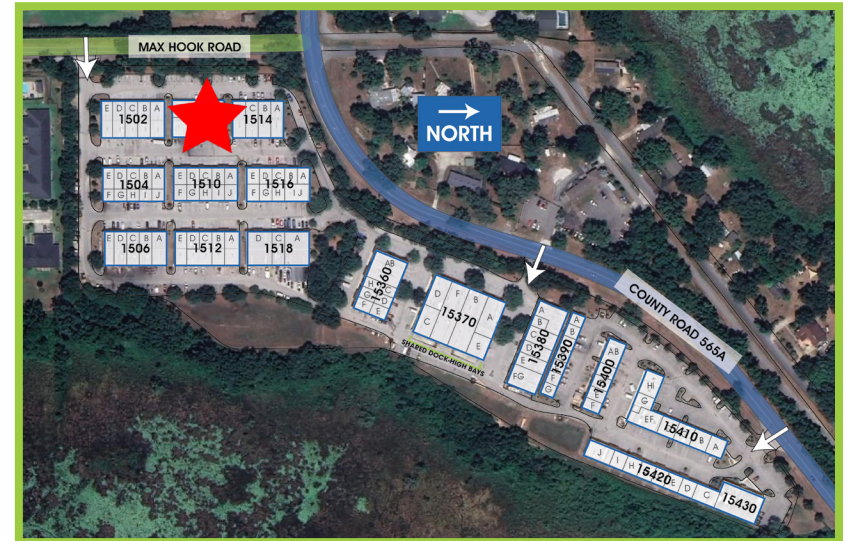
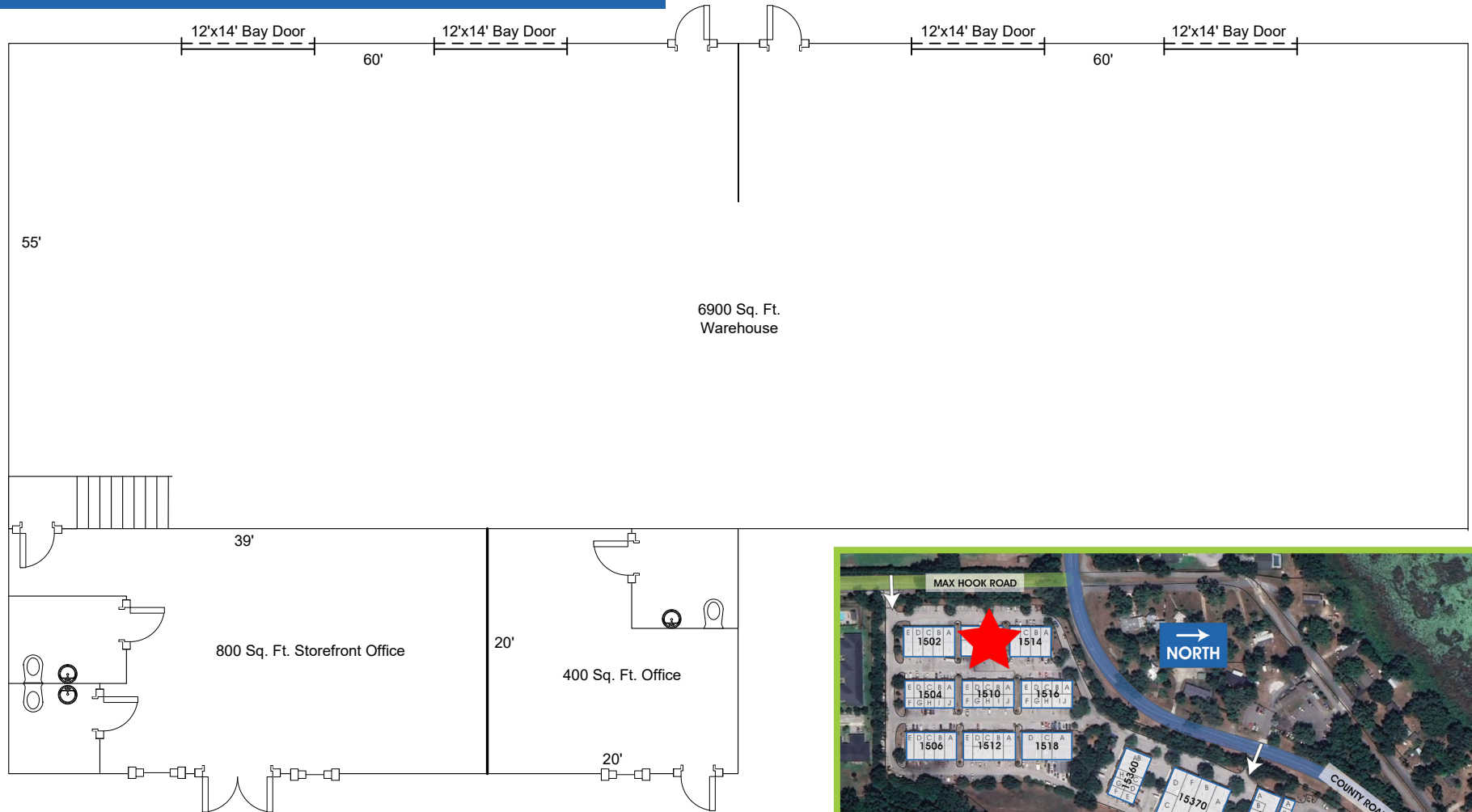
SUITE 1506 A: 2,400 SF



■ 615 E. Colonial Dr., Orlando, FL 32803 ■ Phone: 407.872.0209 ■ www.FCPG.com ■

Information furnished regarding the subject property is believed to be accurate, but no guarantee or representation is made. References to square footage are approximate. This offering is subject to errors, omissions, prior sale or lease or withdrawal without notice. ©2026 First Capital Property Group, Licensed Real Estate Brokers & Managers.

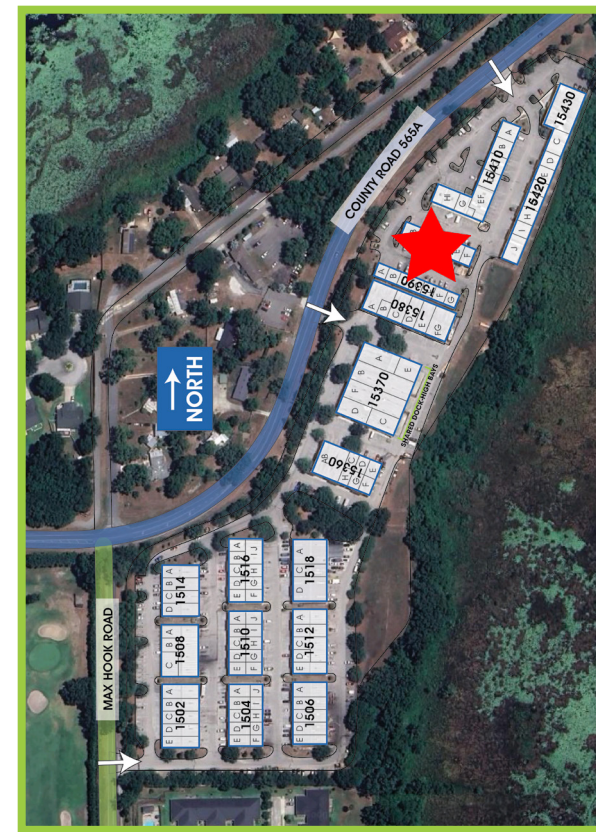
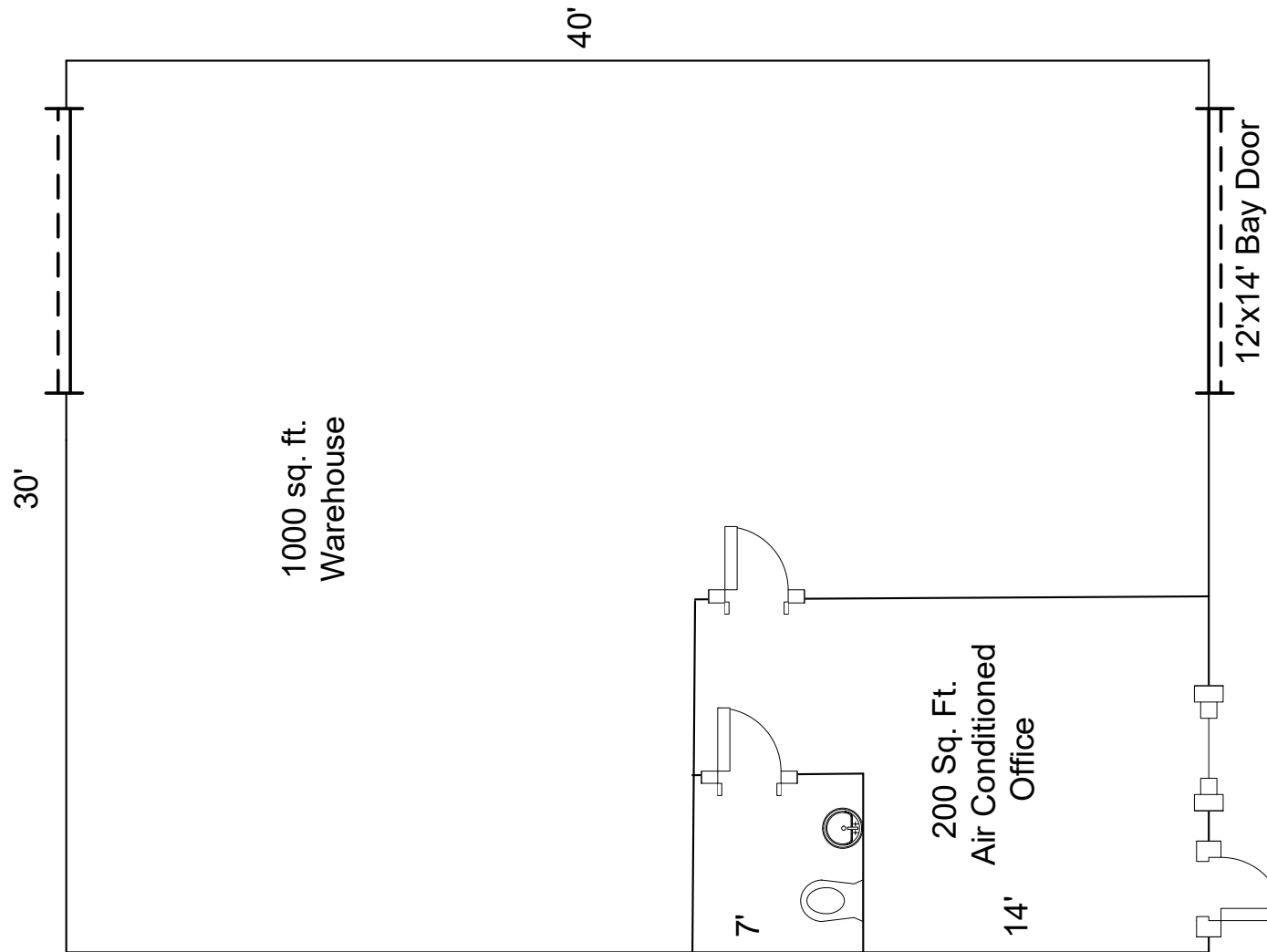
SUITE 1508 A/B: 8,100 SF



615 E. Colonial Dr., Orlando, FL 32803 Phone: 407.872.0209 www.FCPG.com

Information furnished regarding the subject property is believed to be accurate, but no guarantee or representation is made. References to square footage are approximate. This offering is subject to errors, omissions, prior sale or lease or withdrawal without notice. ©2026 First Capital Property Group, Licensed Real Estate Brokers & Managers.

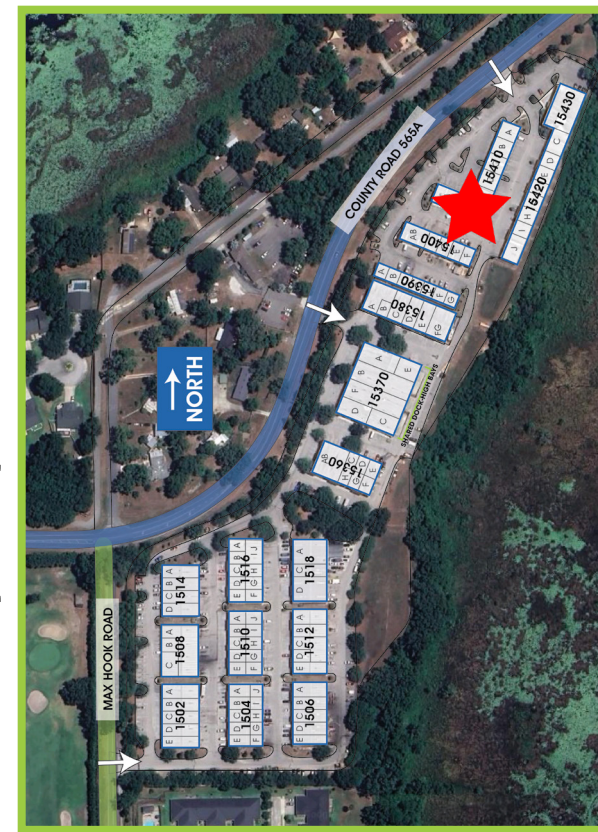
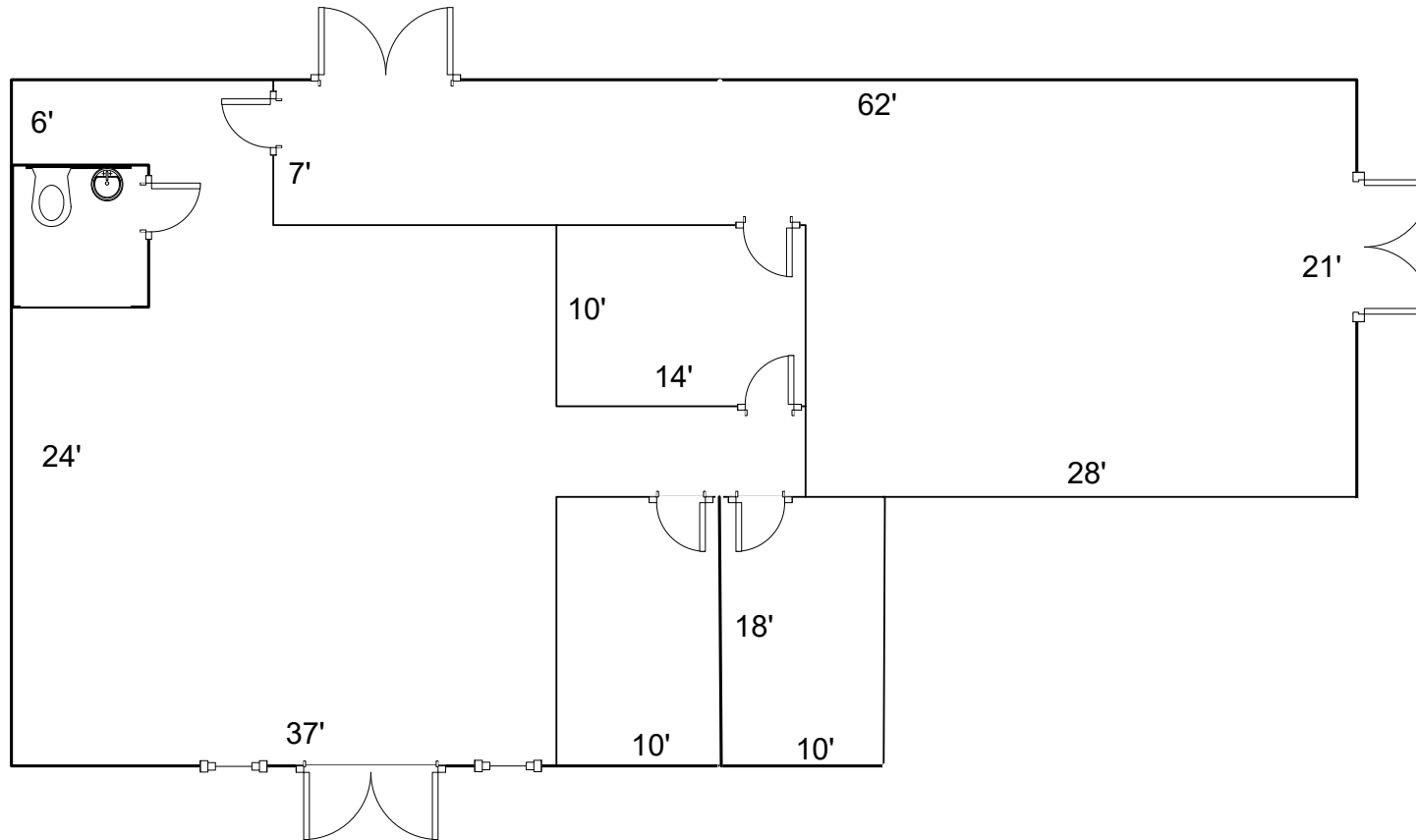
SUITE 15400 C: 1,200 SF



615 E. Colonial Dr., Orlando, FL 32803 Phone: 407.872.0209 www.FCPG.com

Information furnished regarding the subject property is believed to be accurate, but no guarantee or representation is made. References to square footage are approximate. This offering is subject to errors, omissions, prior sale or lease or withdrawal without notice. ©2026 First Capital Property Group, Licensed Real Estate Brokers & Managers.

SUITE 15410 E: 2,800 SF



■ 615 E. Colonial Dr., Orlando, FL 32803 ■ Phone: 407.872.0209 ■ www.FCPG.com ■

Information furnished regarding the subject property is believed to be accurate, but no guarantee or representation is made. References to square footage are approximate. This offering is subject to errors, omissions, prior sale or lease or withdrawal without notice. ©2026 First Capital Property Group, Licensed Real Estate Brokers & Managers.

SUITE 15410 E: 2,800 SF



■ 615 E. Colonial Dr., Orlando, FL 32803 ■ Phone: 407.872.0209 ■ www.FCPG.com ■

Information furnished regarding the subject property is believed to be accurate, but no guarantee or representation is made. References to square footage are approximate. This offering is subject to errors, omissions, prior sale or lease or withdrawal without notice. ©2026 First Capital Property Group, Licensed Real Estate Brokers & Managers.