



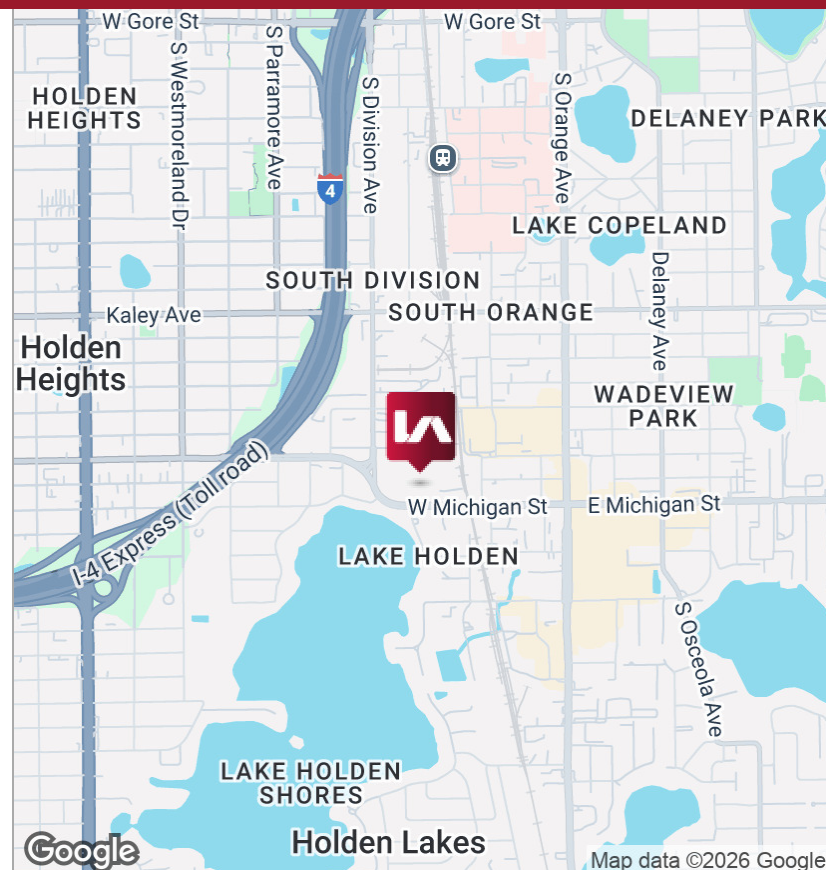
LISTING DATA

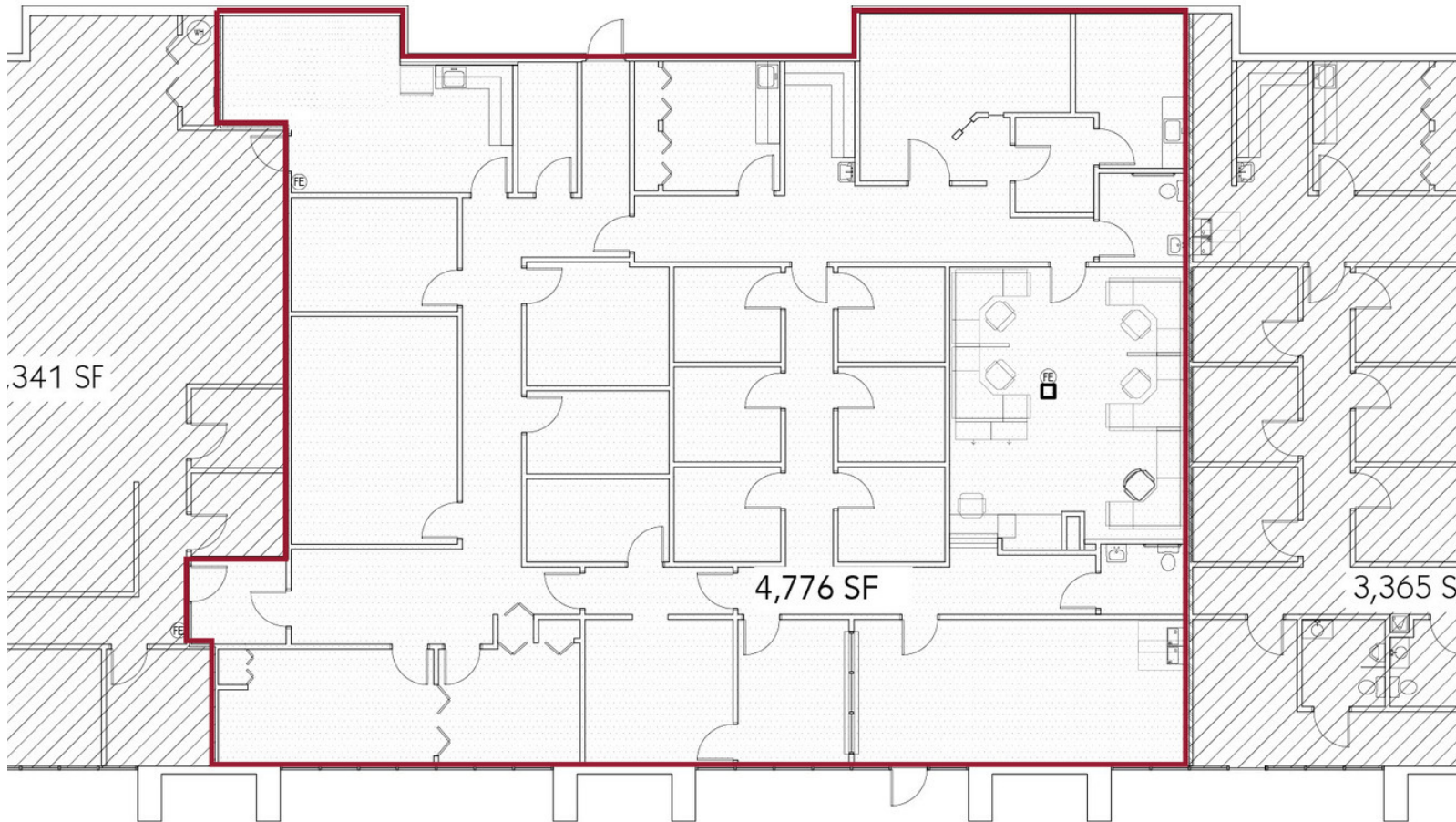
Available SF: Suite 114 | 4,776 SF

Comments: SouthPointe Center represents a unique opportunity for a medical group to lease space in Downtown Orlando. Suite 114 offers high visibility with fascia & monument signage capability from a heavily traveled Michigan St corridor. This vacancy represents the middle of the building and offers storefront glass and direct visibility from the main entrance. With direct parking lot access, wheelchair ramp and a 5/1000 parking ratio, this suite makes patient access simplified. Formerly operated as an orthopedic clinic for the last 40 years, its immediately available for occupancy.

ECONOMIC DATA

Lease Rate: \$28.00 SF/yr (NNN)





SUITE 114