

ORIOLE LOGISTICS CENTER

16671, 16681, & 16691 ORIOLE ROAD
FORT MYERS, FLORIDA 33912



Click to View
Property Video



 **LEE &
ASSOCIATES**
COMMERCIAL REAL ESTATE SERVICES

Lee-FL.com
X @ in f

 **Capital Partners**

ORIOLE LOGISTICS CENTER



PROPERTY FACTS - BUILDING 1

Address	16671 Oriole Road, Fort Myers, FL 33912		
Lease Rate	Negotiable	Column Spacing	50' x 50' w/60' Speed Bay (or Dock Bay)
Number of Buildings	One (1)	Building Depth	160'
Remaining Space	136,000 SF	Minimum Size	24,000 SF
Year Built	2025	Sprinkler	ESFR
Clear Height	28'	Zoning	MPD (Mixed-Use Planned Development)

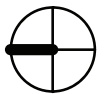
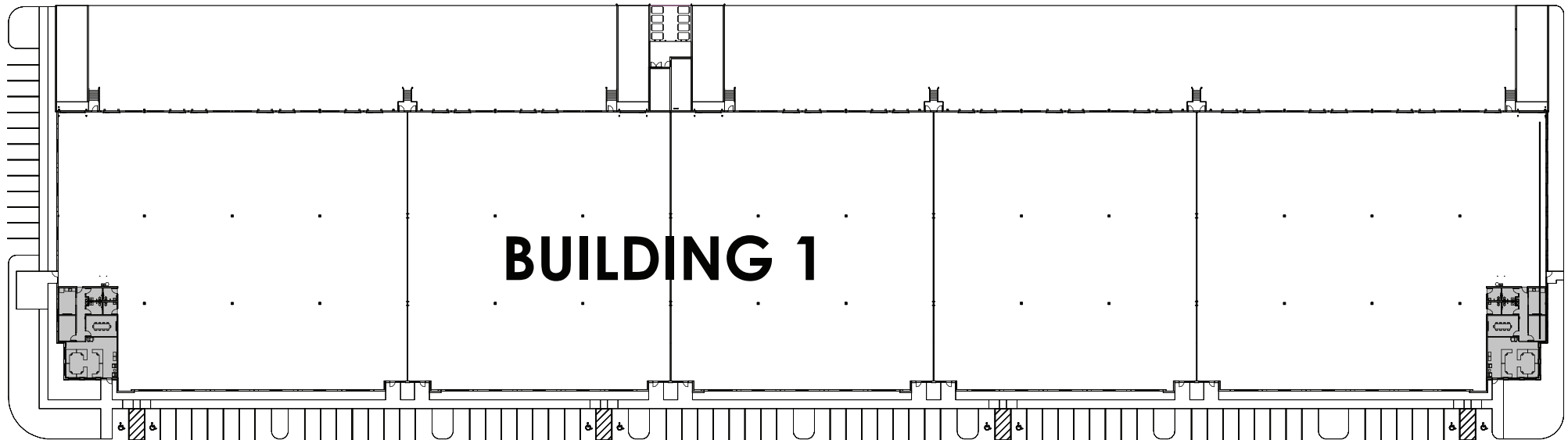
PROPERTY FACTS - BUILDINGS 2 & 3

Address	16681 & 16691 Oriole Road, Fort Myers, FL 33912		
Lease Rate	Negotiable	Column Spacing	50' x 60'
Number of Buildings	Two (2)	Building Depth	180'
Remaining Space	153,000 SF	Minimum Size	27,000 SF
Year Built	2025	Sprinkler	ESFR
Clear Height	32'	Zoning	MPD (Mixed-Use Planned Development)

OVERALL SITE PLAN



Floor Plan
BUILDING 1
16671 Oriole Road



BUILDING 1 SPECIFICATIONS

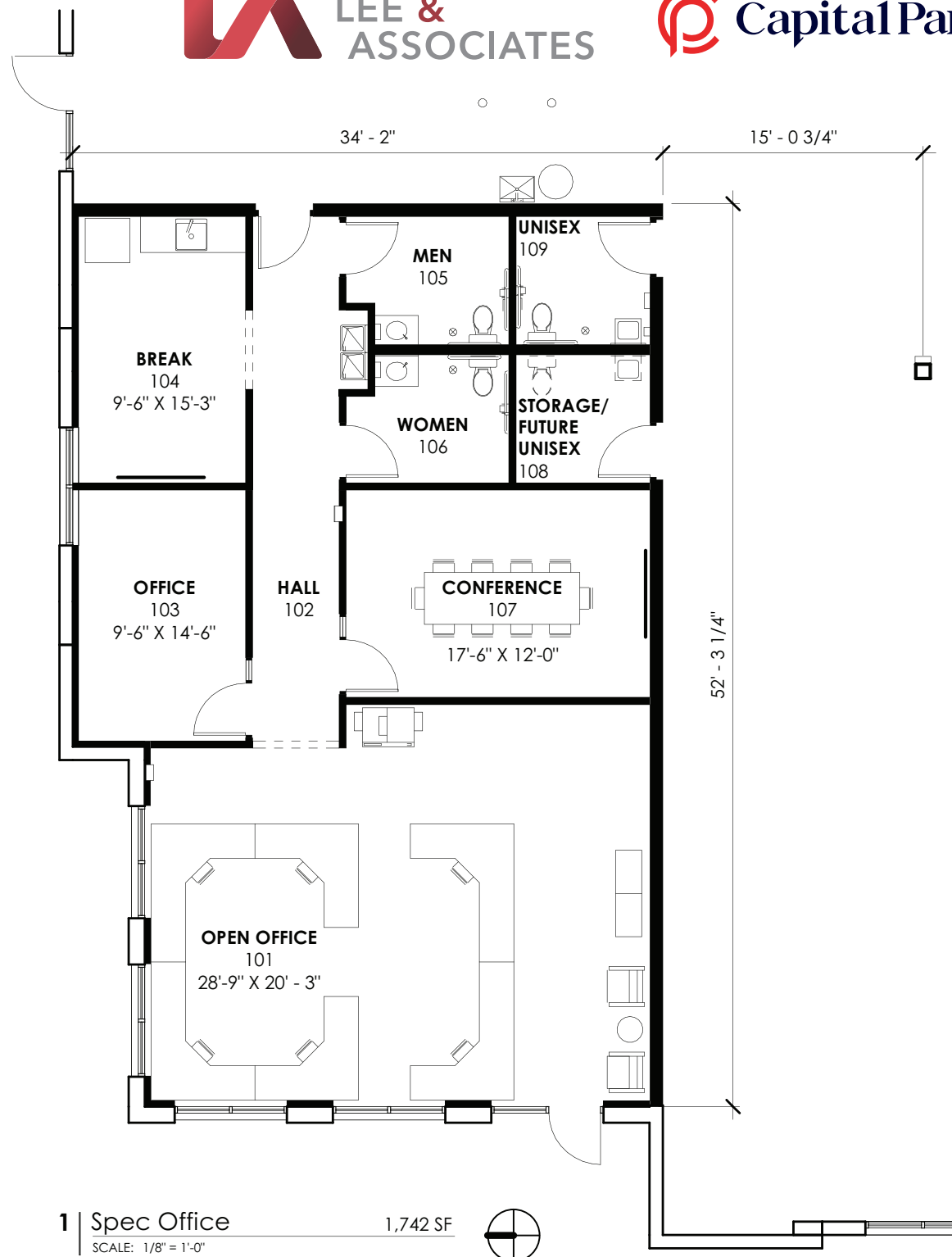
136,000 SF Total
Twenty-Eight (28) Dock Doors
Four (4) Drive-In Doors Via Ramps
28' Clear Height
160' x 850'
176 Parking Spaces

Office Plan
BUILDING 1
16671 Oriole Road

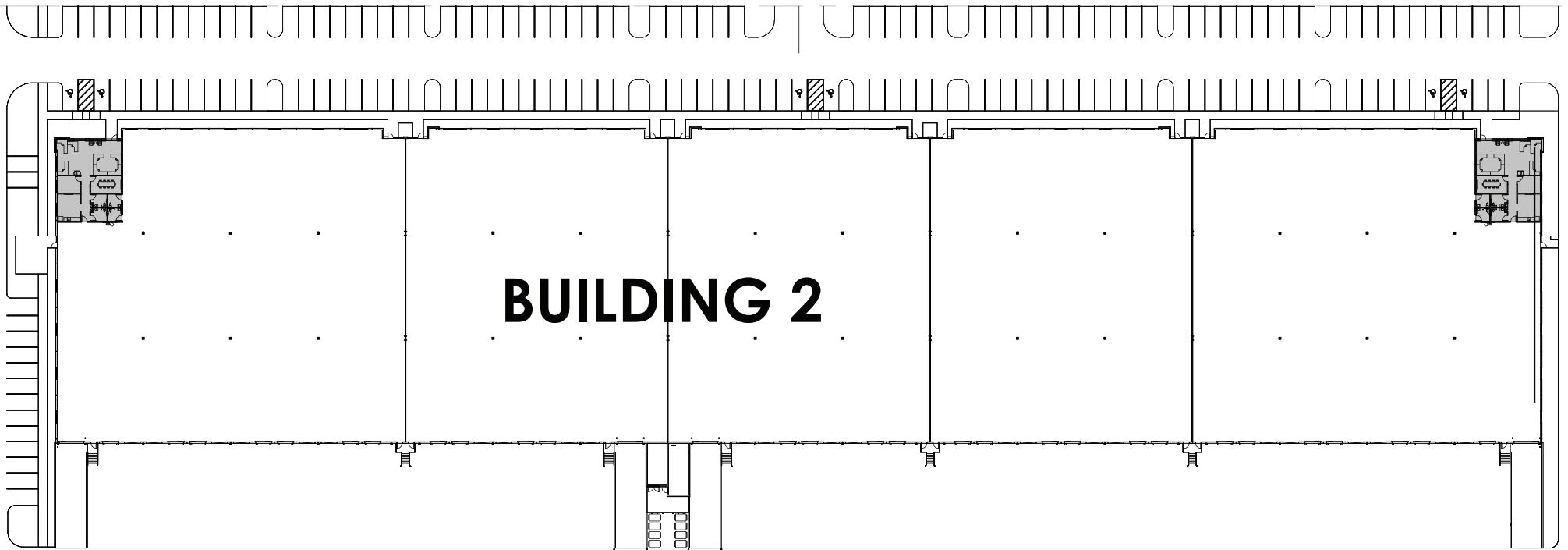


BUILDING 1

Office Detail
1,742 SF



Floor Plan
BUILDING 2
16681 Oriole Road



BUILDING 2 SPECIFICATIONS

153,000 SF Total
Twenty-Eight (28) Dock Doors
Four (4) Drive-In Doors Via Ramps
32' Clear Height
180' x 850'
202 Parking Spaces

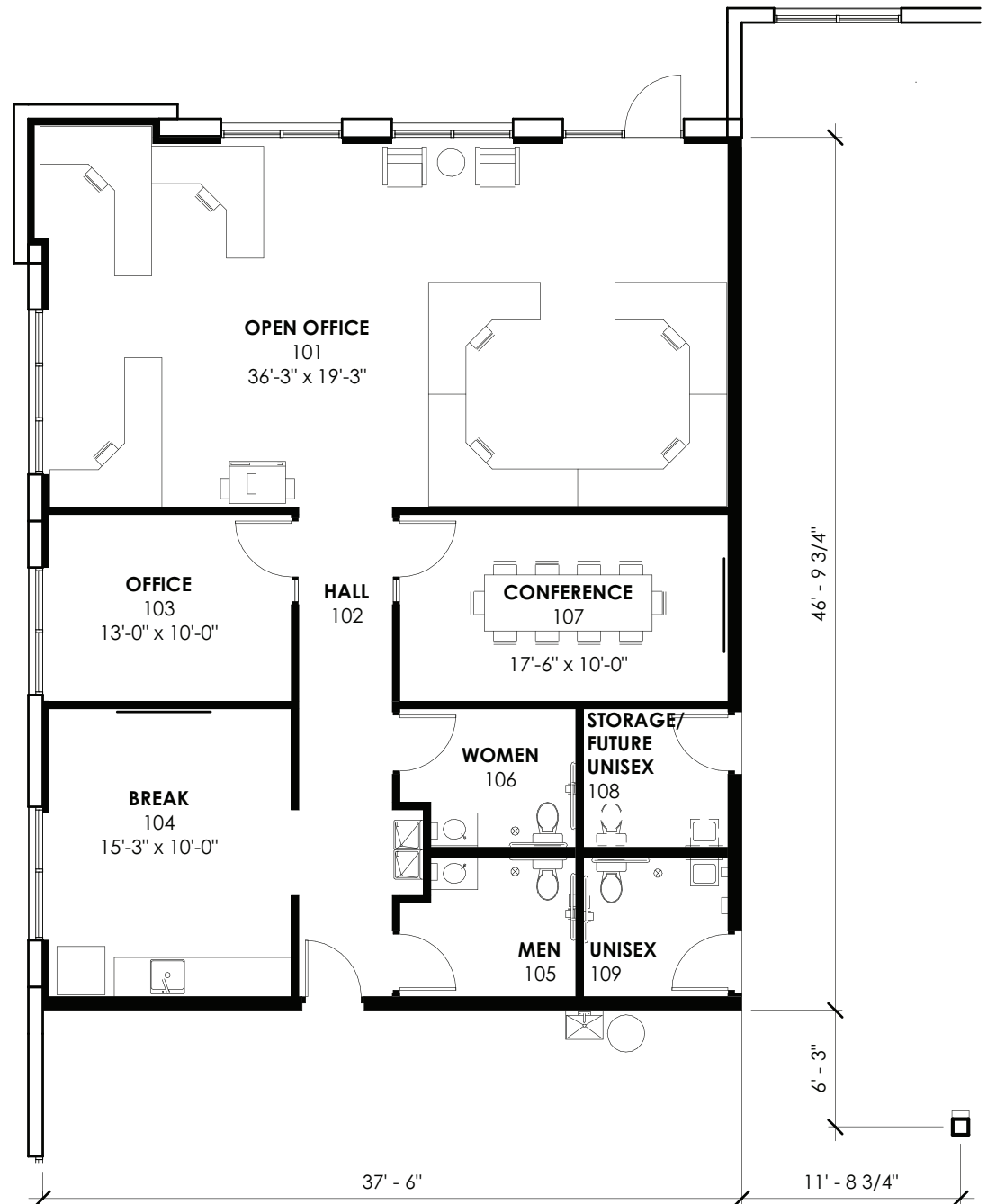


Office Plan
BUILDING 2
16681 Oriole Road

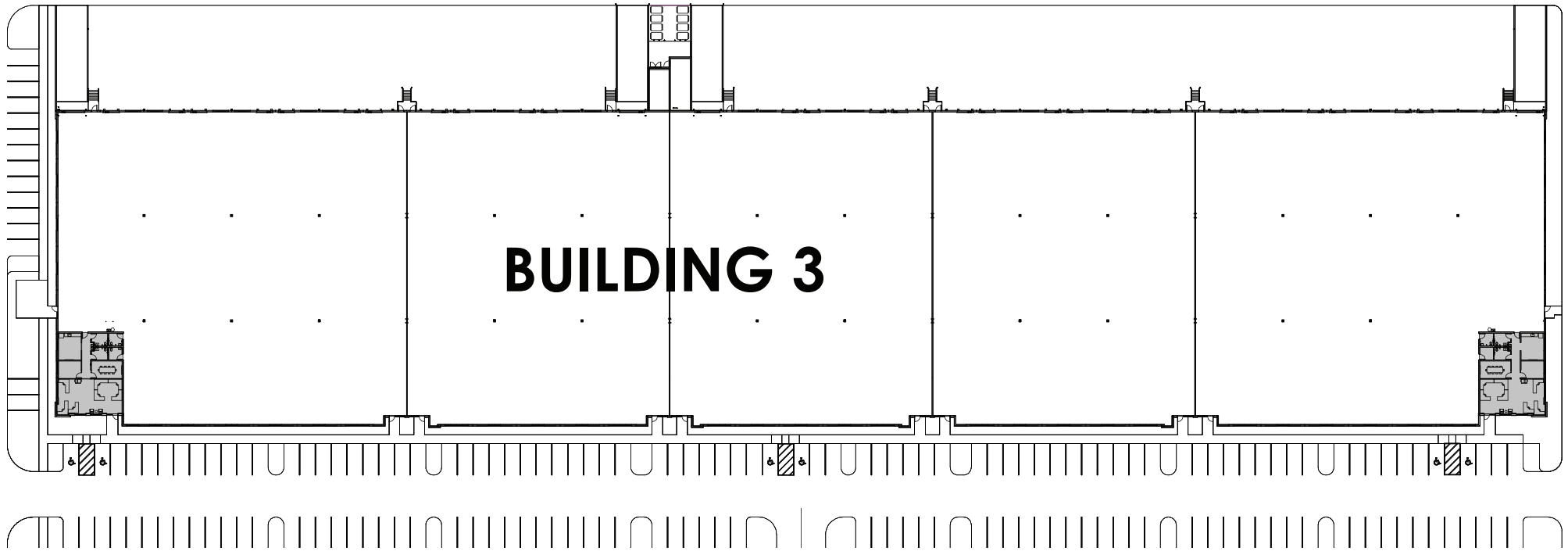


BUILDING 2

Office Detail
1,810 SF



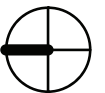
Floor Plan
BUILDING 3
16691 Oriole Road



BUILDING 3 SPECIFICATIONS

153,000 SF Total
Twenty-Eight (28) Dock Doors
Four (4) Drive-In Doors Via Ramps
32' Clear Height
180' x 850'
202 Parking Spaces

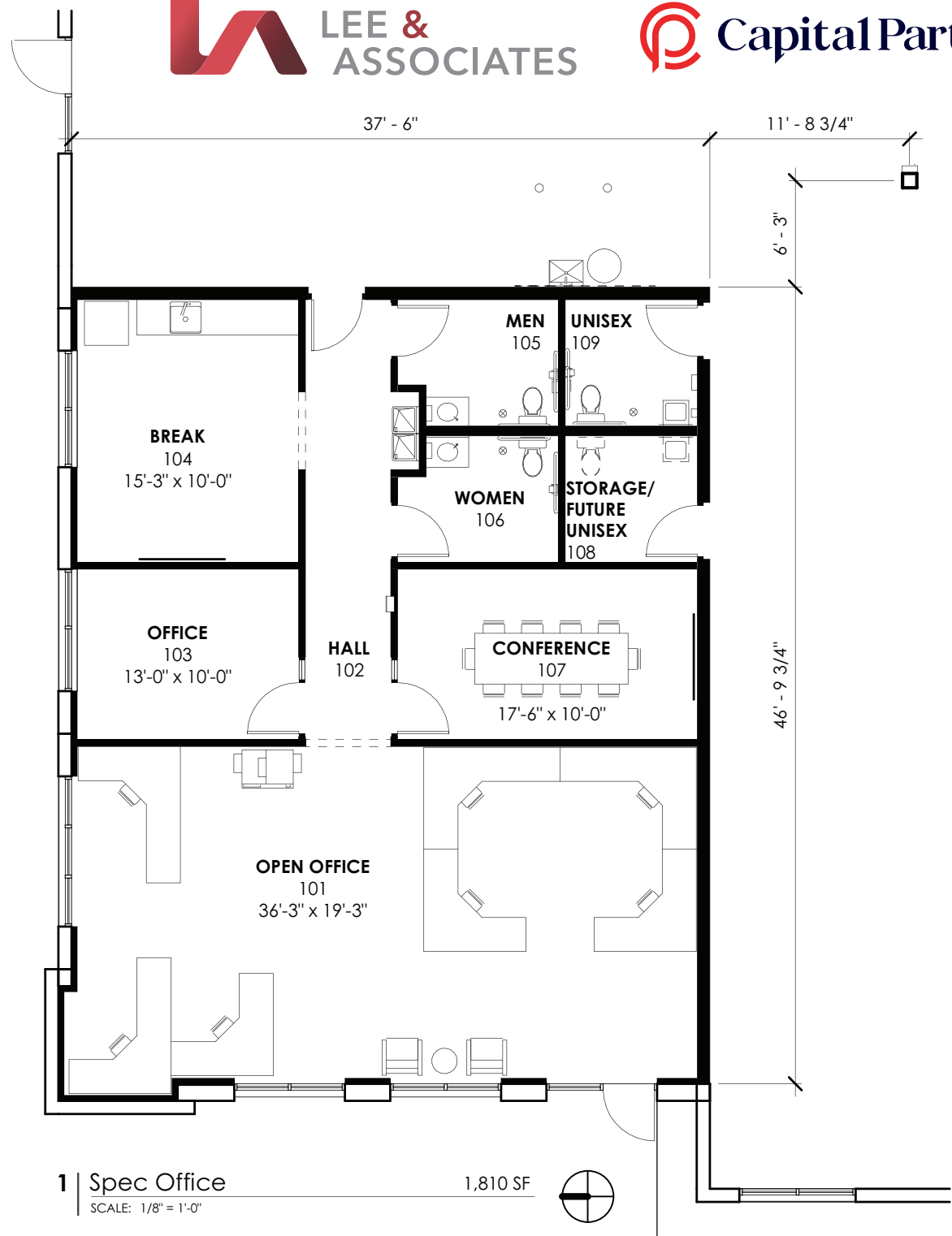
**BUILD-TO-SUIT
OPPORTUNITIES
AVAILABLE!**



Office Plan
BUILDING 3
16691 Oriole Road

BUILDING 3

Office Detail
1,810 SF



Current
CONSTRUCTION
Status



As of
December 16, 2025

LOCATION AERIAL



FIDELITONE
FREIGHTLINER
ALGENOL
BEACON
CARMAX
Velocity ENGINEERING SERVICES
rice INSULATION & GLASS
CALIFORNIA CLOSETS
TEN-8
TREND

TESLA
WHITE CAP
ABC Supply Co. Inc.
Cummins
amazon.com
Domestic Ave
Lee Rd

Frito Lay
CD CLIVE DANIEL
FASTENAL
RaceTrac
THE HOME DEPOT
Wawa
Capital Partners ORIOLE LOGISTICS CENTER
Oriole Rd
Three Oaks Pkwy

PerformanceHealth Surgery Center
NEO GENOMICS
FRANTZ EyeCare
SCOTLYNN
SLICK CITY ACTION PARK
PRIME FIBER
HD SUPPLY
GCM
RIVIAN
75

Terminal Access Rd
Treeline Ave
wayfair
TRANE
VIVID EV
G&G DELIVERY SERVICES INC.
PGI INNOVATIONS
LEHMAN PIPE AND SUPPLY INC.
Coca-Cola
Alico Rd

GULF COAST TOWN CENTER



PRESENTED BY



COMMERCIAL REAL ESTATE SERVICES



Capital Partners is an industry-leading, Minneapolis-based, commercial real estate developer, investor, and operator. For nearly three decades, Capital Partners has acquired, developed, and managed more than \$1.5 billion of institutional quality industrial property totaling more than 14 million square feet. Capital Partners' investment platform includes ownership of industrial assets, development, asset management, property management services, and full in-house accounting services.



BOB JOHNSTON, SIOR
PRINCIPAL
(239) 210-7601
BJOHNSTON@LEE-ASSOCIATES.COM



JERRY MESSONNIER, SIOR
PRINCIPAL
(239) 210-7610
JMESSONNIER@LEE-ASSOCIATES.COM



FRANK V. MARTONE
VICE PRESIDENT
(239) 210-7605
FMARTONE@LEE-ASSOCIATES.COM

LEE & ASSOCIATES | NAPLES - FT. MYERS

LEE-FL.COM

FORT MYERS, FL 33966



The information and details contained herein have been obtained from third-party sources believed to be reliable, however, Lee & Associates has not independently verified its accuracy. Lee & Associates makes no representations, guarantees, or express or implied warranties of any kind regarding the accuracy or completeness of the information and details provided herein, including but not limited to, the implied warranty of suitability and fitness for a particular purpose. Interested parties should perform their own due diligence regarding the accuracy of the information. The information provided herein, including any sale or lease terms, is being provided subject to errors, omissions, changes of price or conditions, prior sale or lease, and withdrawal without notice. Third-party data sources: CoStar Group, Inc. and Lee Proprietary Data. © Copyright 2019 Lee & Associates all rights reserved.