



# MID-CITY COMMERCIAL/ RESIDENTIAL FOR SALE

124 S Clark St, New Orleans, LA 70119

MATT EATON, CCIM • PARTNER

OFFICE: 504.414.0703

MOBILE: 504.339.2136

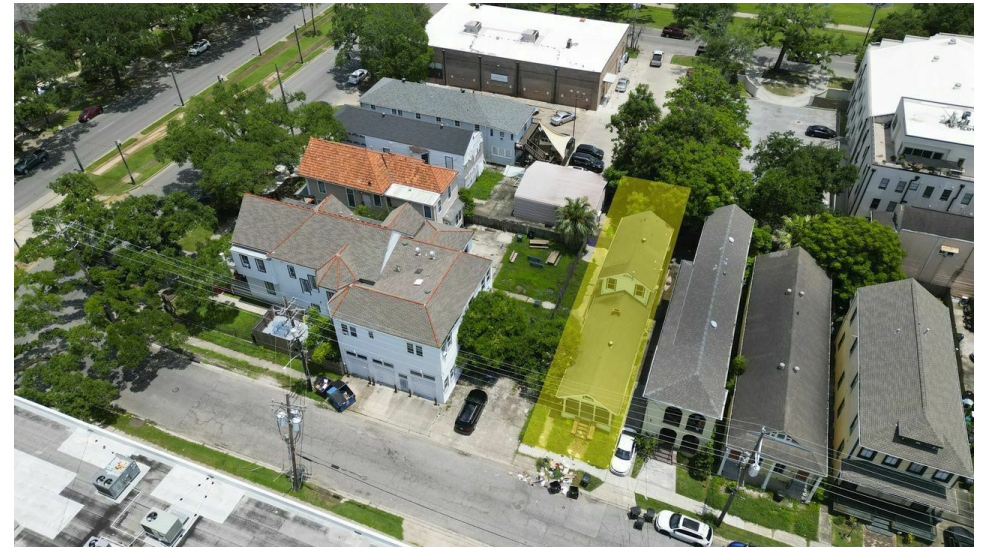
matt@matteatonccim.com

MARTIN O. MILLER III, CCIM, SIOR • PARTNER

OFFICE: 504.414.0703

MOBILE: 504.616.5700

momiller@ccim.net



## PROPERTY DESCRIPTION

This 1,872 sq ft single-family home, situated on 3,024 sq ft of land, offers a prime opportunity for office use in the vibrant Mid-City area of New Orleans. The property is zoned HU-MU, providing flexibility for various commercial applications. Perfect for businesses seeking a historic yet functional space, this property combines residential charm with commercial potential.

## OFFERING SUMMARY

Sale Price:	\$400,000
Lot Size:	3,024 SF
Building Size:	1,872 SF

DEMOGRAPHICS	1 MILE	3 MILES	5 MILES
Total Households	11,339	80,819	164,990
Total Population	25,148	173,097	361,279
Average HH Income	\$76,830	\$90,532	\$92,378

OFFICE BUILDING FOR SALE

## PROPERTY SUMMARY







# MID-CITY COMMERCIAL/ RESIDENTIAL FOR SALE

124 S Clark St, New Orleans, LA 70119

MATT EATON, CCIM • PARTNER

OFFICE: 504.414.0703

MOBILE: 504.339.2136

matt@matteatonccim.com

MARTIN O. MILLER III, CCIM, SIOR • PARTNER

OFFICE: 504.414.0703

MOBILE: 504.616.5700

momiller@ccim.net



OFFICE BUILDING FOR SALE

ADDITIONAL PHOTOS

SOUTHEAST COMMERCIAL REAL ESTATE | 2310 19th Street Gulfport, MS 39501 | <https://southeastcre.com>



SOUTHEAST  
COMMERCIAL  
REAL ESTATE



# MID-CITY COMMERCIAL/ RESIDENTIAL FOR SALE

124 S Clark St, New Orleans, LA 70119

MATT EATON, CCIM • PARTNER

OFFICE: 504.414.0703

MOBILE: 504.339.2136

matt@matteatonccim.com

MARTIN O. MILLER III, CCIM, SIOR • PARTNER

OFFICE: 504.414.0703

MOBILE: 504.616.5700

momiller@ccim.net



**TOTAL LIVING: 1,872 SQ.FT.,  
NON-LIVING AREAS: 331 SQ.FT.**

FLOOR 2  
[AREA: 569]



LOW CEILING (1) LOW CEILING (2)  
[AREA: 26] [AREA: 29]

MEASUREMENTS ARE APPROXIMATE AND ARE NOT GUARANTEED.  
MUST BE VERIFIED FOR VALUATION PURPOSES.

OFFICE BUILDING FOR SALE

FLOOR PLAN

SOUTHEAST COMMERCIAL REAL ESTATE | 2310 19th Street Gulfport, MS 39501 | <https://southeastcre.com>



**SOUTHEAST  
COMMERCIAL**  
REAL ESTATE