



ALPHA  
EQUITY  
REALTY & MANAGEMENT

# SPACE AVAILABLE FOR LEASE



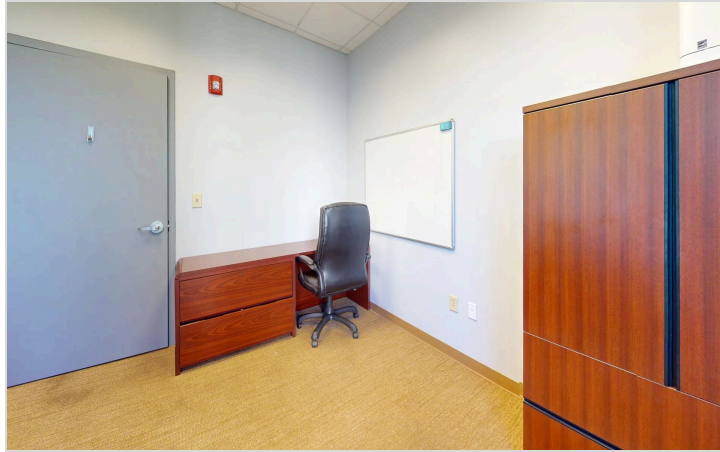
1525 International  
Parkway  
Lake Mary, FL 32746

Pricing:  
**\$999/Month**

## PROPERTY HIGHLIGHTS:

- α Prime Heathrow/Lake Mary location
- α ±115 SF total office condo space
- α Class A professional office building
- α Built-out offices & conference room
- α Reception area with upscale finishes
- α 24-hour secured access
- α Ample surface parking
- α Central air conditioning
- α Private balcony overlooking courtyard

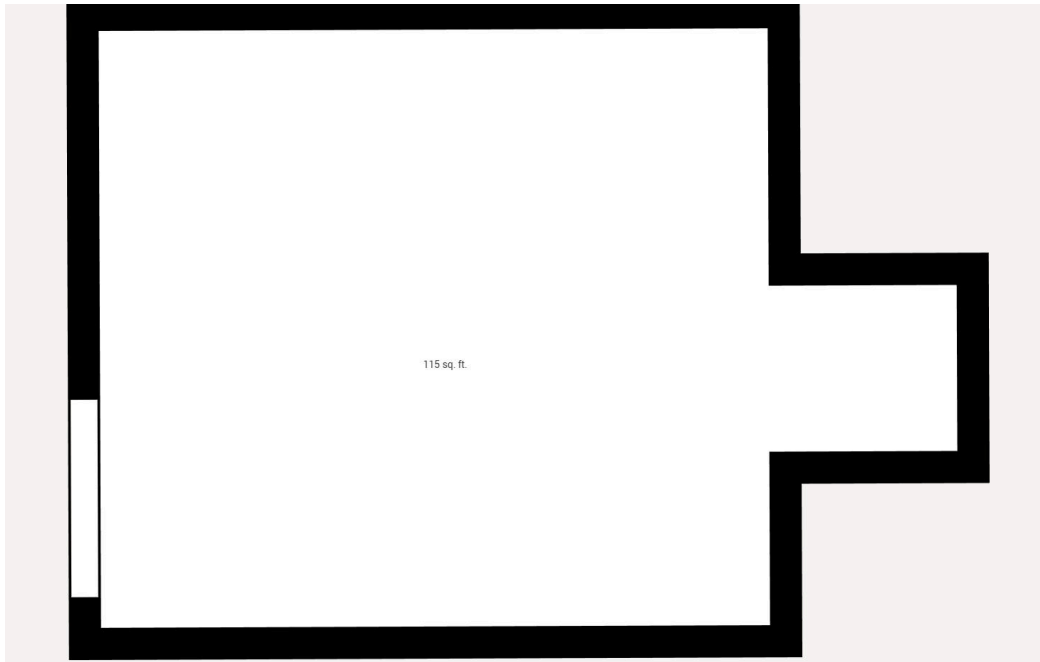




**Mac Jaffer: 516-554-5775**  
**Tati K: 407-668-8534**  
**leasing@alphaacq.com**

**1525 International Parkway**  
**Lake Mary, Florida 32746**

Alpha Equity does not represent or warranty the accuracy of the information contained herein. Such information has been given to Alpha Equity by the owner of the property or obtained from other sources deemed reliable. Alpha Equity has no reason to doubt its accuracy, but does not guarantee it. The reviewers(s) of this document is encouraged to perform their own research for their own purposes to verify the dependability of the information being reviewed. All information should be verified by reviewer(s) prior to purchase or lease. Unless otherwise noted, the property is being offered as-is, where is, with all faults.



Virtual Tour

<https://my.matterport.com/models/EbMBaCWdU2y>



Watch Video

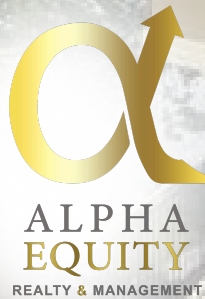
<https://vimeo.com/1141588188>

Mac Jaffer: **516-554-5775**  
Tati K: **407-668-8534**  
[leasing@alphaacq.com](mailto:leasing@alphaacq.com)

1525 International Parkway  
Lake Mary, Florida 32746

Alpha Equity does not represent or warranty the accuracy of the information contained herein. Such information has been given to Alpha Equity by the owner of the property or obtained from other sources deemed reliable. Alpha Equity has no reason to doubt its accuracy, but does not guarantee it. The reviewers(s) of this document is encouraged to perform their own research for their own purposes to verify the dependability of the information being reviewed. All information should be verified by reviewer(s) prior to purchase or lease. Unless otherwise noted, the property is being offered as-is, where is, with all faults.

# **1525 International Parkway, Lake Mary Florida 32746**



**Alpha Equity Realty & Management**  
**1525 International Parkway,**  
**Unit #4071, Lake Mary FL 32746**  
**[www.recfl.com](http://www.recfl.com)**



**MAC JAFFER**  
**516-554-5775**

**TATI K**  
**407-668-8534**

**[leasing@alphaacq.com](mailto:leasing@alphaacq.com)**