

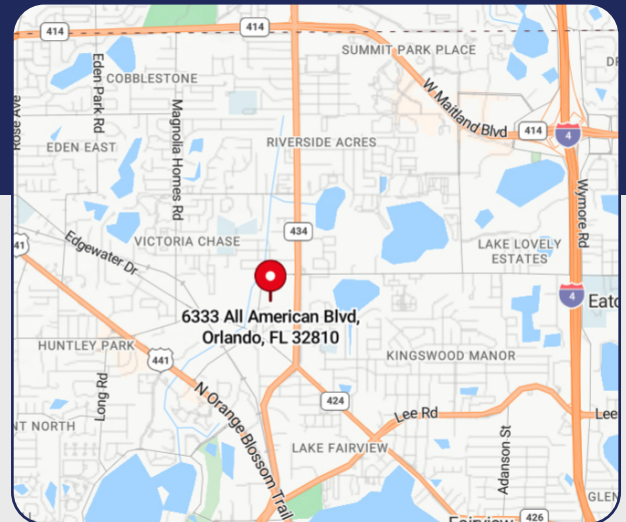
# FOR LEASE

## GRADE LEVEL FLEX SPACE

6325-6373 All American Blvd, Orlando, FL 32810

### Unit 6373

- > **10,500 SF**
  - > 3,750± SF of office space
  - > Two 12' x 14' grade level, roll-up doors
  - > Heavy 3-phase power - two meters
  - > **\$12,250.00/month**
- 
- 20' clear height
  - Large truck court
  - Ample parking
  - Modified Gross lease - base year real estate taxes and property insurance included - tenant pays sales tax, utilities, and trash
  - Additional off-site parking and outdoor storage available



**Bill Bywater, CCIM**

D 407.206.5736

O 407.206.7300

bill@bywater.com



1209 Edgewater Drive

Suite 100

Orlando, FL 32804

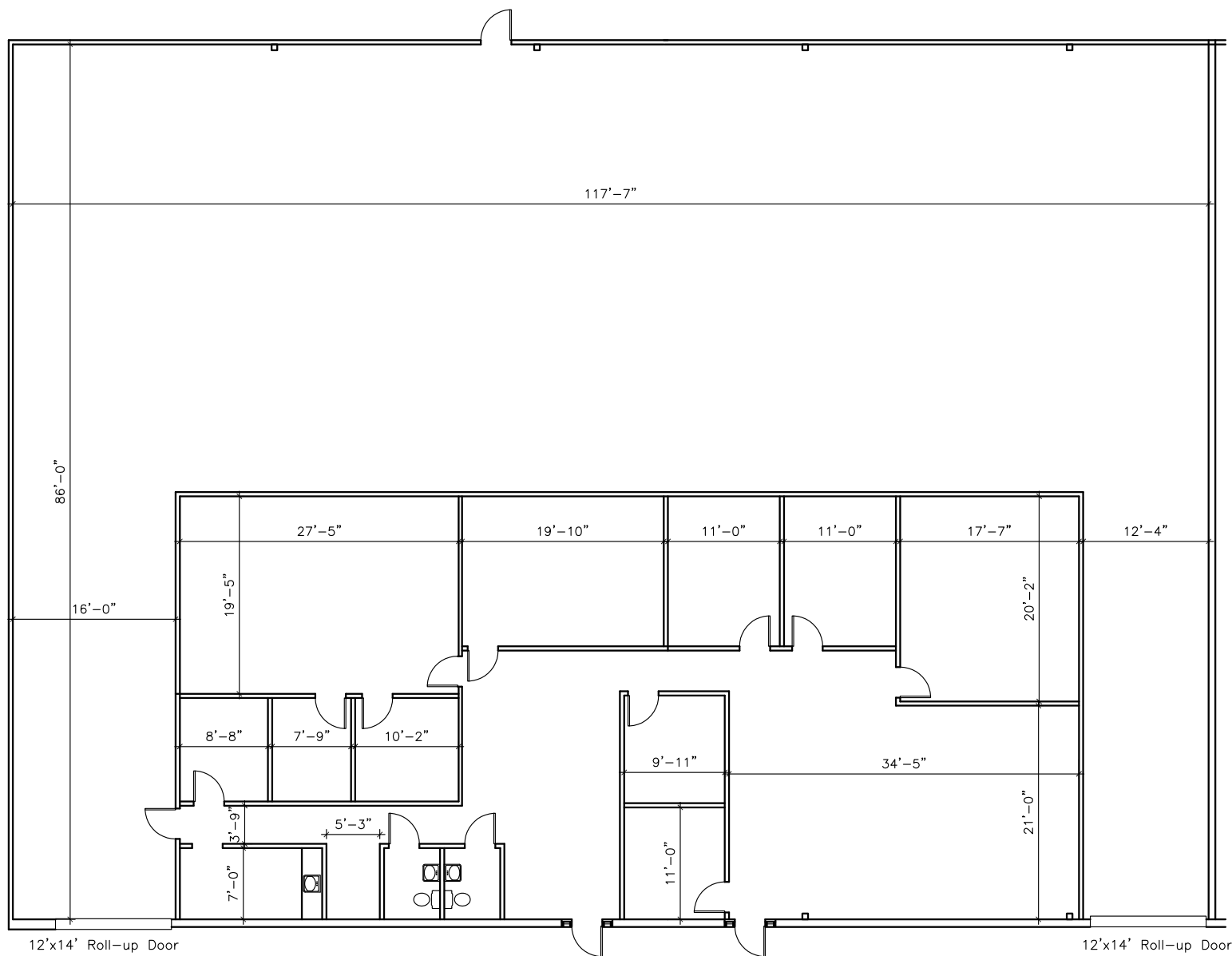
407.206.7300 Main

www.bywater.com

# GRADE LEVEL WAREHOUSE

6325-6373 All American Blvd, Orlando, FL 32810

## FLOORPLAN



1209 Edgewater Drive, Suite 100 | Orlando, FL 32804 | 407.206.7300 | [www.bywater.com](http://www.bywater.com)

The information contained herein was obtained from sources deemed reliable and is assumed to be correct. It is not guaranteed by The Bywater Company.



# GRADE LEVEL WAREHOUSE

6325-6373 All American Blvd, Orlando, FL 32810

## SURVEY



1209 Edgewater Drive, Suite 100 | Orlando, FL 32804 | 407.206.7300 | [www.bywater.com](http://www.bywater.com)

The information contained herein was obtained from sources deemed reliable and is assumed to be correct. It is not guaranteed by The Bywater Company.



# GRADE LEVEL WAREHOUSE

6325-6373 All American Blvd, Orlando, FL 32810



1209 Edgewater Drive, Suite 100 | Orlando, FL 32804 | 407.206.7300 | [www.bywater.com](http://www.bywater.com)

The information contained herein was obtained from sources deemed reliable and is assumed to be correct. It is not guaranteed by The Bywater Company.