

Property Summary



PROPERTY DESCRIPTION

Introducing 154 S Wickham Rd, a prime commercial property available for lease in Melbourne, FL. The property features ample parking, excellent visibility, and high traffic count, ensuring maximum exposure for any business. With modern finishes, open layout, and convenient access, this property provides a turnkey solution for businesses seeking a prominent and convenient location. Don't miss this opportunity to lease a property that offers both functionality and a strategic location for your business.

LOCATION DESCRIPTION

Directly off Wickham Rd
Near Melbourne International Airport
Great Central Brevard County Location

OFFERING SUMMARY

| | |
|----------------|---------------------|
| Lease Rate: | \$16.00 SF/yr (NNN) |
| Available SF: | 41,576 SF |
| Building Size: | 41,576 SF |

| DEMOGRAPHICS | 1 MILE | 3 MILES | 5 MILES |
|-------------------|----------|----------|----------|
| Total Households | 1,244 | 20,103 | 53,220 |
| Total Population | 2,857 | 47,922 | 123,647 |
| Average HH Income | \$99,125 | \$89,673 | \$89,138 |



ROB BECKNER, SIOR

Principal
321.722.0707 x11
Rob@TeamLBR.com

70 W. Hibiscus Blvd., Melbourne, FL 32901 • 321.722.0707 • teamlbr.com

Information contained herein has been obtained through sources deemed reliable but cannot be guaranteed as to its accuracy. A purchaser or lessee is expected to verify all information to his/her own satisfaction. Zoning information subject to change and not warranted. Always confirm current requirements with local governing agencies.

154 S Wickham Rd, Melbourne, FL 32904

Additional Photos



ROB BECKNER, SIOR

Principal

321.722.0707 x11

Rob@TeamLBR.com

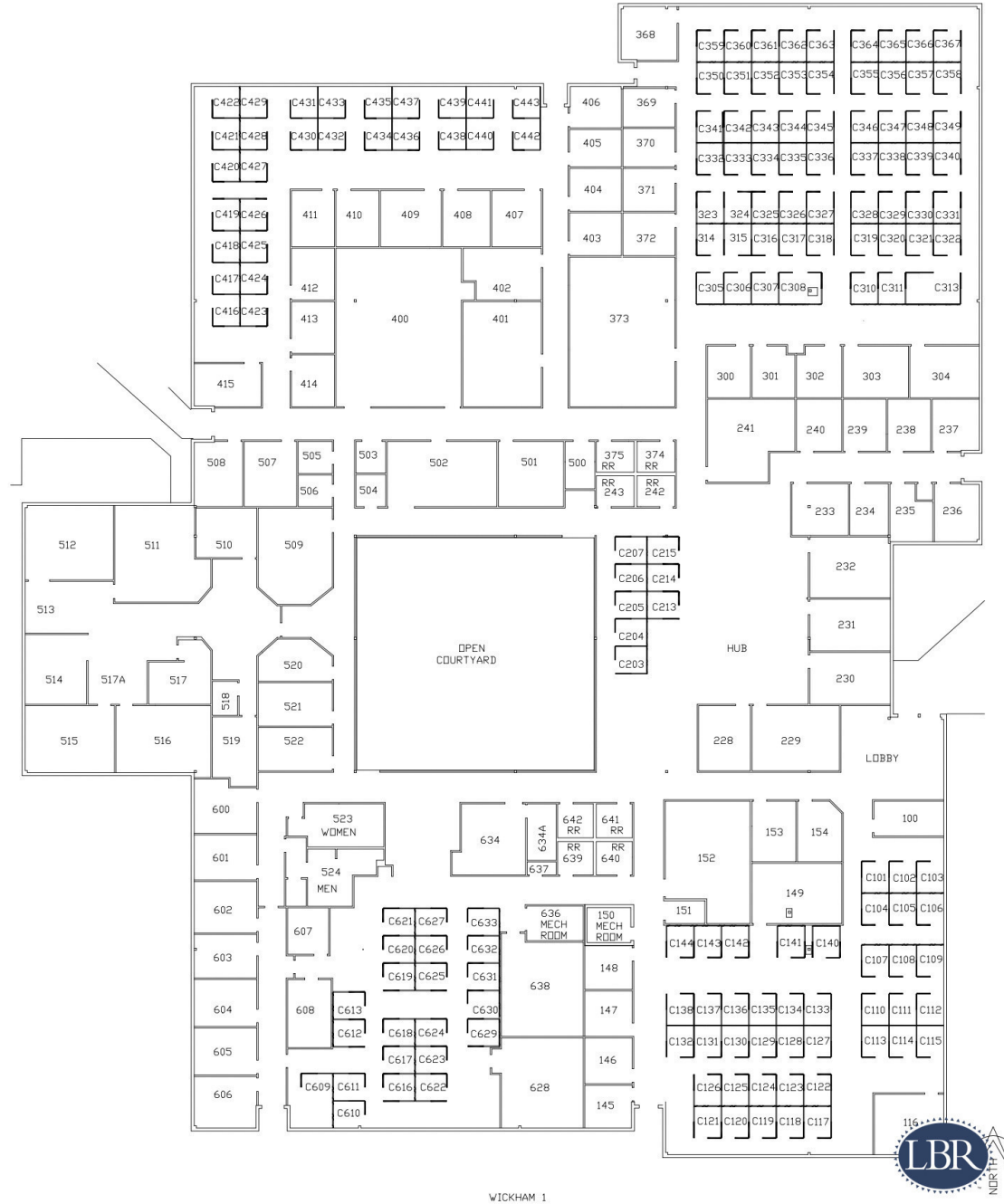
70 W. Hibiscus Blvd., Melbourne, FL 32901 • 321.722.0707 • teamlbr.com

Information contained herein has been obtained through sources deemed reliable but cannot be guaranteed as to its accuracy. A purchaser or lessee is expected to verify all information to his/her own satisfaction. Zoning information subject to change and not warranted. Always confirm current requirements with local governing agencies.

154 S Wickham Rd, Melbourne, FL 32904

Floor Plans

154 S Wickham Rd, Melbourne, FL 32904



WICKHAM 1



ROB BECKNER, SIOR

Principal

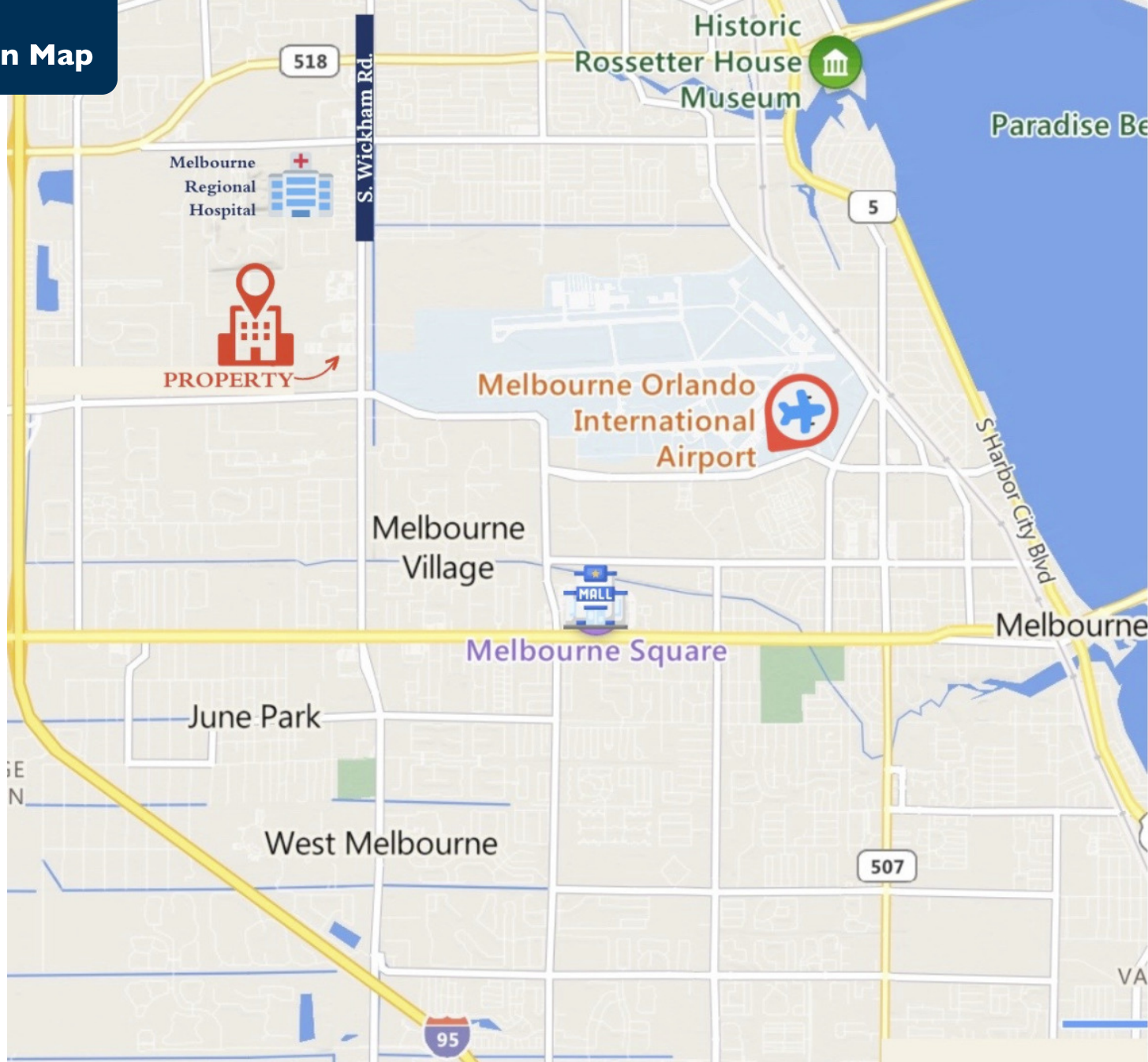
321.722.0707 x11

Rob@TeamLBR.com

70 W. Hibiscus Blvd., Melbourne, FL 32901 • 321.722.0707 • teamlbr.com

Information contained herein has been obtained through sources deemed reliable but cannot be guaranteed as to its accuracy. A purchaser or lessee is expected to verify all information to his/her own satisfaction. Zoning information subject to change and not warranted. Always confirm current requirements with local governing agencies.

Location Map



154 S Wickham Rd, Melbourne, FL 32904



ROB BECKNER, SIOR

Principal

321.722.0707 x11

Rob@TeamLBR.com

70 W. Hibiscus Blvd., Melbourne, FL 32901 • 321.722.0707 • teamlbr.com

Information contained herein has been obtained through sources deemed reliable but cannot be guaranteed as to its accuracy. A purchaser or lessee is expected to verify all information to his/her own satisfaction. Zoning information subject to change and not warranted. Always confirm current requirements with local governing agencies.

Demographics Map & Report

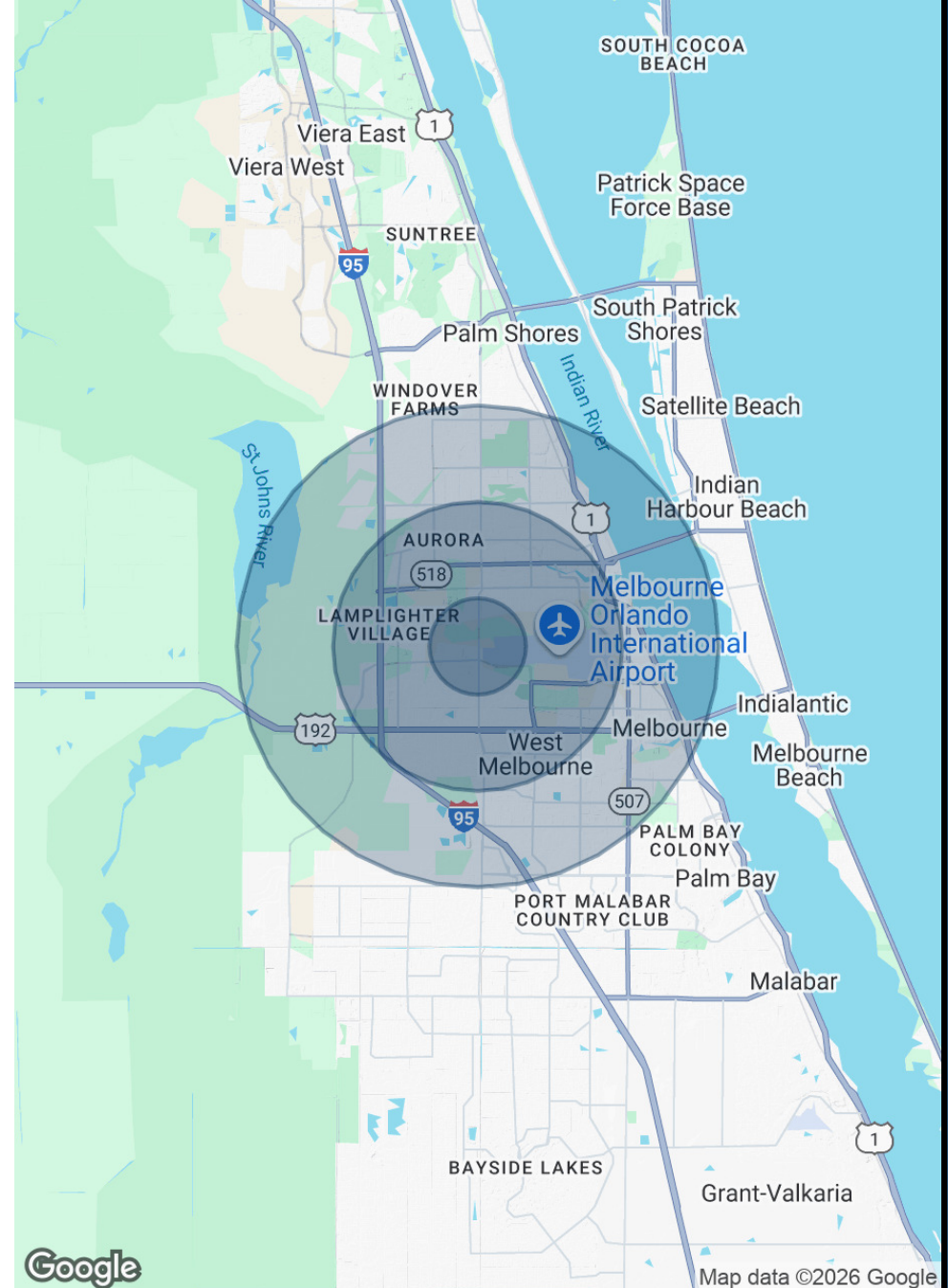
POPULATION

| | 1 MILE | 3 MILES | 5 MILES |
|----------------------|--------|---------|---------|
| Total Population | 2,857 | 47,922 | 123,647 |
| Average Age | 46 | 45 | 45 |
| Average Age (Male) | 44 | 44 | 44 |
| Average Age (Female) | 48 | 47 | 47 |

HOUSEHOLDS & INCOME

| | 1 MILE | 3 MILES | 5 MILES |
|---------------------|-----------|-----------|-----------|
| Total Households | 1,244 | 20,103 | 53,220 |
| # of Persons per HH | 2.3 | 2.4 | 2.3 |
| Average HH Income | \$99,125 | \$89,673 | \$89,138 |
| Average House Value | \$378,422 | \$330,812 | \$342,678 |

Demographics data derived from AlphaMap



ROB BECKNER, SIOR

Principal

321.722.0707 x11

Rob@TeamLBR.com

70 W. Hibiscus Blvd., Melbourne, FL 32901 • 321.722.0707 • teamlbr.com

Information contained herein has been obtained through sources deemed reliable but cannot be guaranteed as to its accuracy. A purchaser or lessee is expected to verify all information to his/her own satisfaction. Zoning information subject to change and not warranted. Always confirm current requirements with local governing agencies.

1154 S Wickham Rd, Melbourne, FL 32904