

# FOR LEASE

# 16,918 SF

ORLANDO CENTRAL PARK VII

2901 TITAN ROW  
ORLANDO, FL 32809



FOR LEASE

SUITE 118

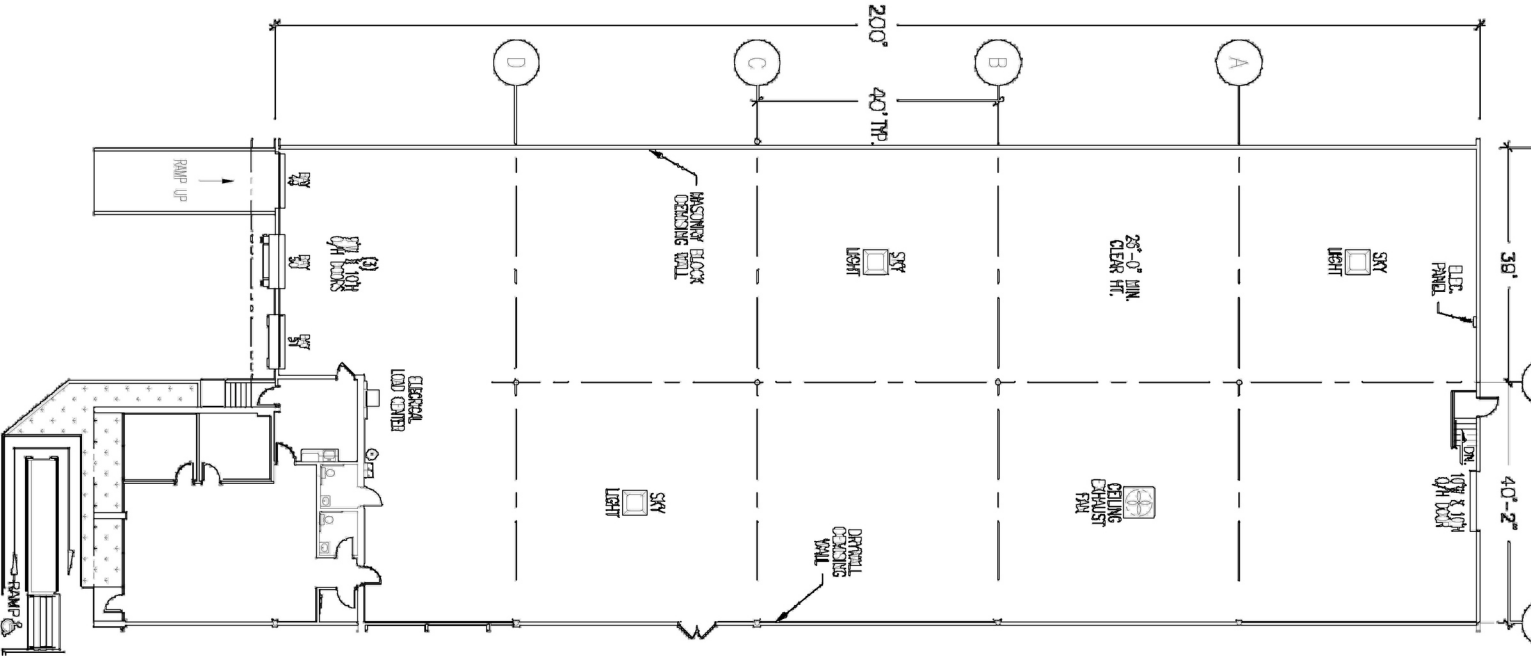
AVAILABLE FEBRUARY 2026



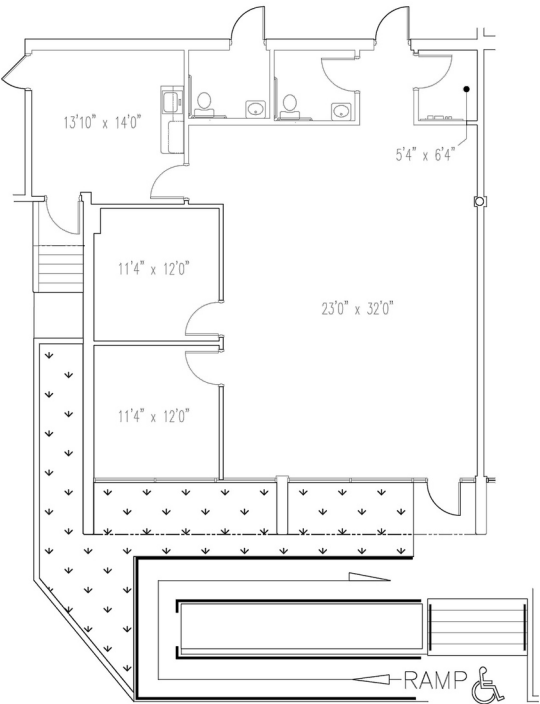
LEASED BY



SUITE 118 | 16,918 SF

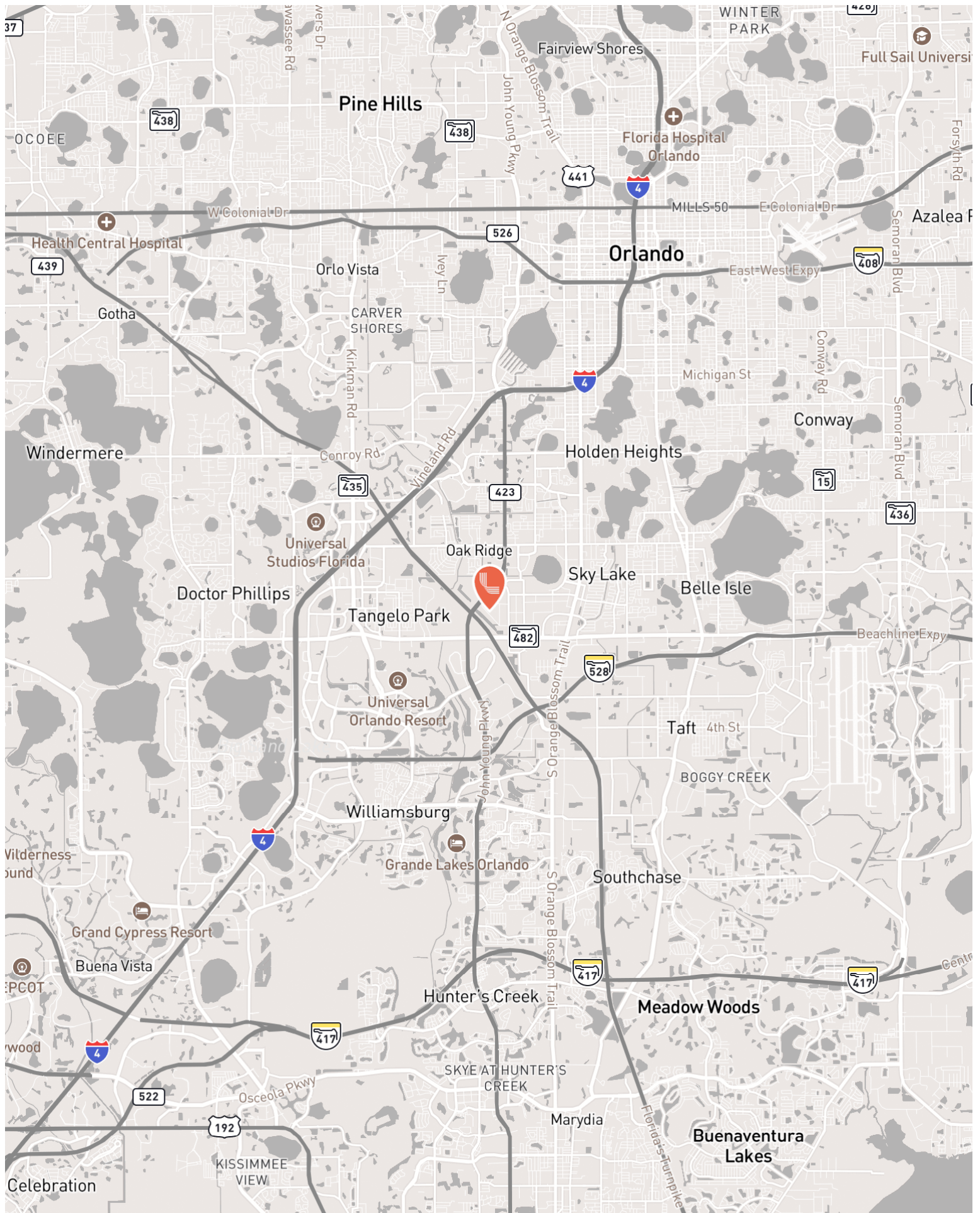


OFFICE | 1,471 SF



THE LISTING

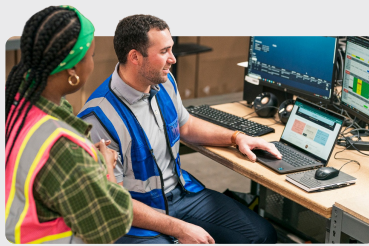
Building Size:	267,432 SF
Building Type:	Front Load
Clear Height:	22'
Column Spacing:	40' x 40'
Building Depth:	200'
Truck Court:	111'
Available SF	16,918 SF
Office SF:	1,471 SF
Doors:	Two (2) Dock Doors
	One (1) Ramp



# Committed to Driving Value for Our Customers

## Properties with a Competitive Edge

Our scale, proprietary data and local relationships allow our 1,200+ skilled team members to help customers stay ahead of market trends.

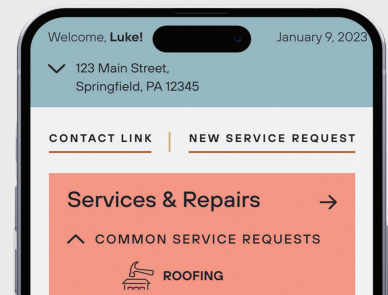


## Best-in-Class Customer Service

Our on-the-ground regional teams provide you with local expertise, leveraging data-driven insights to find the right solutions for your business.

## Link+

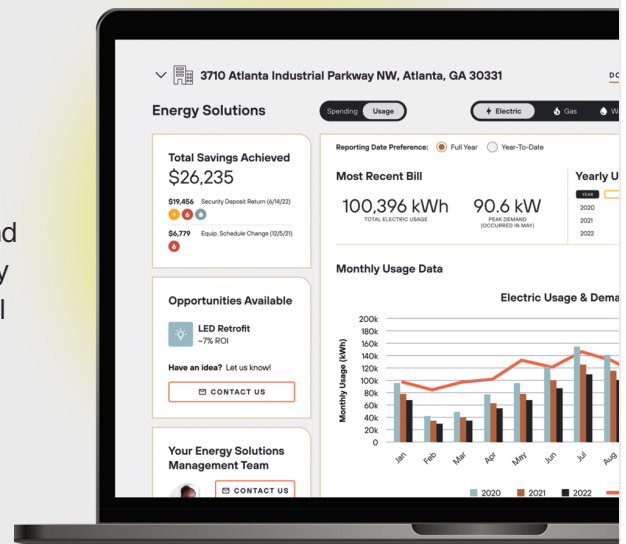
Our digital customer experience platform provides easy access to your property management teams, lease documents, billing and service requests. Sign up today!



500 Million  
Square Foot  
Portfolio

## Energy Solutions

Link Logistics' award-winning utility management program helps customers save time and money while unlocking energy efficiency opportunities. Enroll today through Link+.



# CONTACT INFORMATION

2901 TITAN ROW  
ORLANDO, FL 32809

**Tim Perry, CCIM, SIOR**

tperry@lee-associates.com  
(321) 278-0233

**Ryan Griffith**

rgriffith@lee-associates.com  
(908) 208-4774

**Derek Rigglesman, SIOR**

drigglesman@lee-associates.com  
(407) 456-3463

This document is for informational purposes only and does not constitute an offer or acceptance of a lease. Any lease agreement must be in writing and signed by the landlord. No representations or warranties are made except as expressly stated in a signed lease. Information is provided "as is" and may be subject to errors or change without notice.



LEASED BY

