

Fruitland Park Development Land

2048 Miller Blvd, Fruitland Park, Florida 34731

Tim Sennett, MBA, ALC, CCIM
352-460-1011
tim@saundersrealestate.com

Miller Blvd

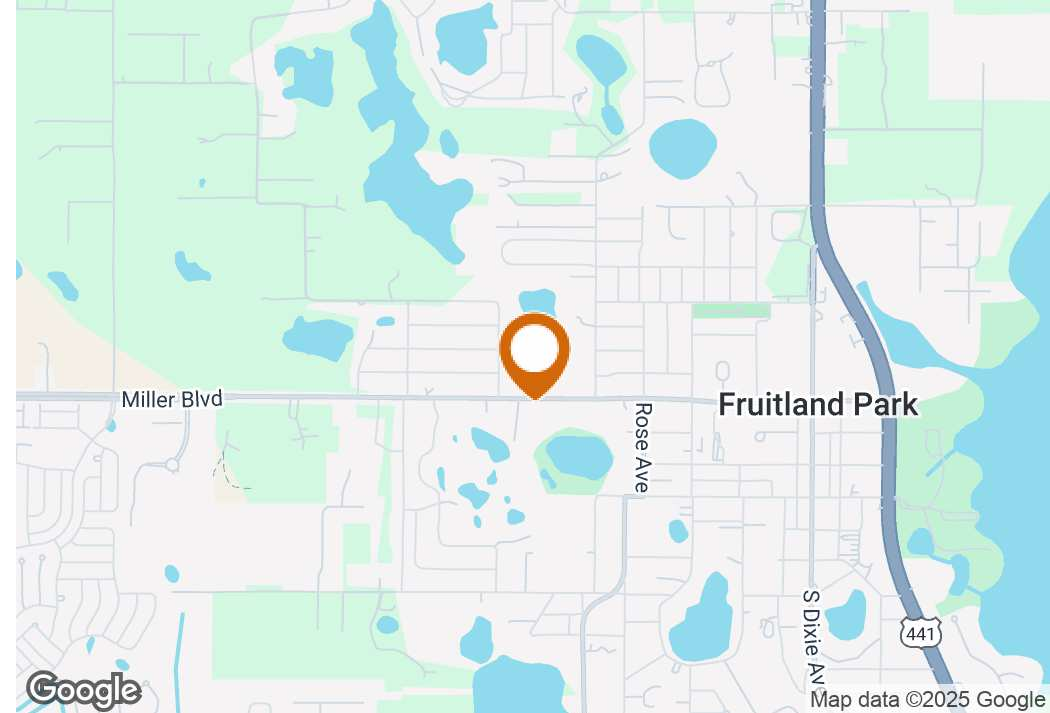
TABLE OF CONTENTS



Table of Contents

Property Summary	3
Property Description	4
Specifications & Features	5
Aerial Map	6
Aerial Photo	7
Aerial Photo	8
Regional Map	9
Location Map	10
Demographics	11
Retailer Map	12
Additional Photos	13
Advisor Biography	14

PROPERTY SUMMARY



Offering Summary

Sale Price:	\$1,199,000
Lot Size:	4.45 Acres
Price / Acre:	\$269,438
Zoning:	A
PIN:	04-19-24-0003-000-04000
Road Frontage:	365 ± FT (Miller Blvd)
Traffic Count:	17,500 ± Cars/Day (Miller Blvd)
City:	Fruitland Park
County:	Lake
State:	Florida
Property Type:	Development Land

Property Overview

Introducing an exceptional development opportunity in the thriving Fruitland Park area. This property features 4.45 acres of prime development land, ideal for office, retail, multifamily, or townhome opportunities. Its prime location provides convenient access to amenities and a growing market for commercial ventures to accommodate The Villages, which is located just west of the property. With its rich history and potential for growth, this property is an enticing prospect for investors seeking a promising investment in an increasingly sought-after area.

Property Highlights

- 17,500 ± Cars/Day on Miller Blvd
- Close proximity to the Villages
- Area of development

PROPERTY DESCRIPTION



Location Description

2048 Miller Blvd is well located in Fruitland Park, just east of The Villages, one of Central Florida's most active and rapidly expanding communities. The property sits west of U.S. Highway 441, offering convenient north-south access to Lady Lake, Leesburg, and Ocala, while also serving as a primary corridor for regional traffic and daily commuting. Nearby connections to local arterial roads provide efficient travel throughout Lake County, with close proximity to retail centers, medical services, and residential neighborhoods. The combination of access, visibility, and surrounding growth makes this a strategic location within the greater Villages and Lake County market.

Location Highlights

- Approximately 10 minutes to downtown Leesburg
- Close proximity to regional medical facilities, shopping corridors, and everyday services
- Located within an established growth corridor benefiting from continued residential and commercial expansion
- Convenient access to surrounding communities including Lady Lake, Wildwood, and southern Marion County

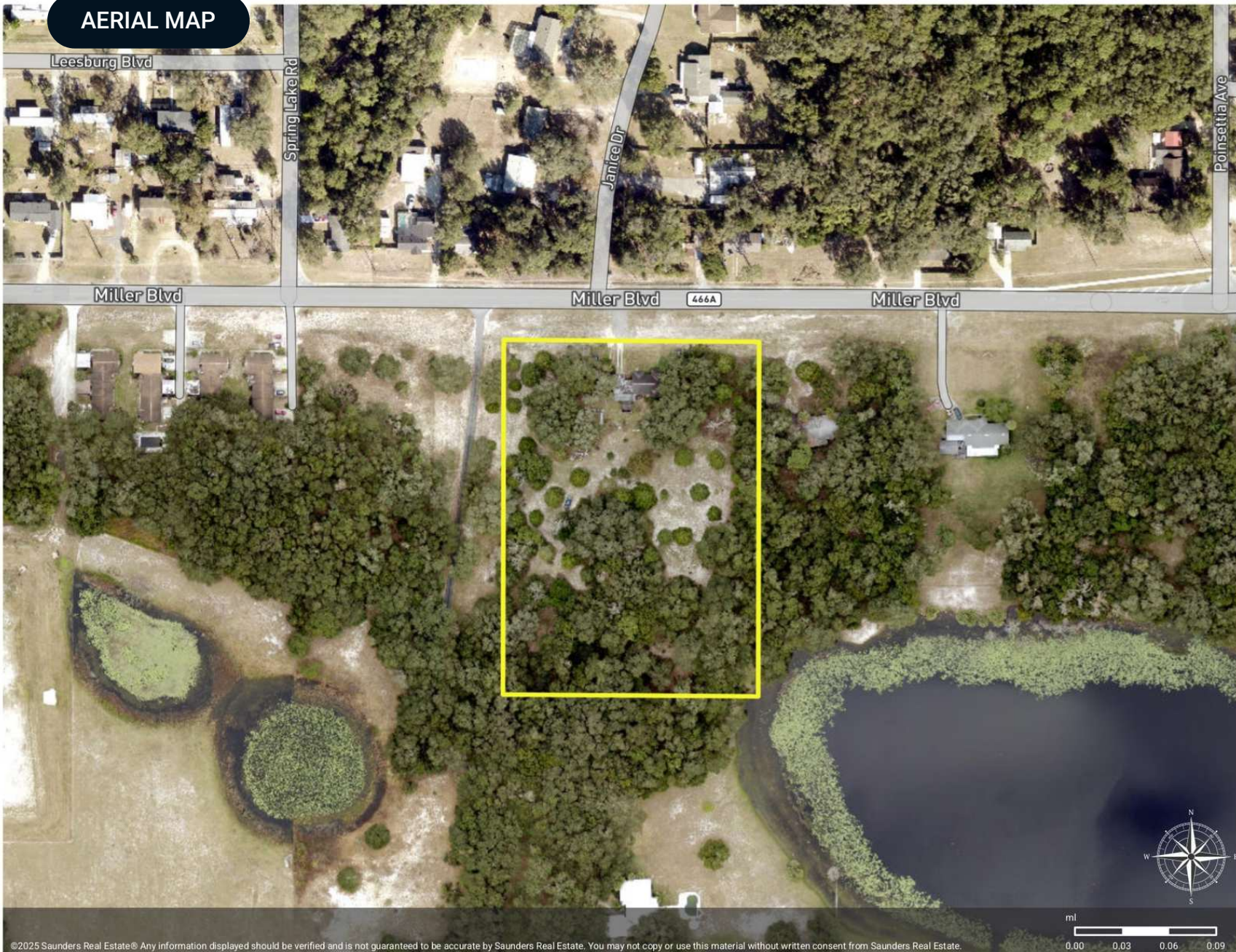
SPECIFICATIONS & FEATURES



Specifications & Features

Uplands / Wetlands:	96.9% Uplands 3.1% Flood Plain
Soil Types:	<ul style="list-style-type: none">• Candler Sand• Tavares Sand
Taxes & Tax Year:	\$1,140.87 - 2025
Zoning / FLU:	A
Road Frontage:	365 FT - Miller Blvd
Current Use:	Vacant home. Highest and best use would be development.

AERIAL MAP



Fruitland Park Development Land

Polygon



©2025 Saunders Real Estate® Any information displayed should be verified and is not guaranteed to be accurate by Saunders Real Estate. You may not copy or use this material without written consent from Saunders Real Estate.

ml
0.00 0.03 0.06 0.09

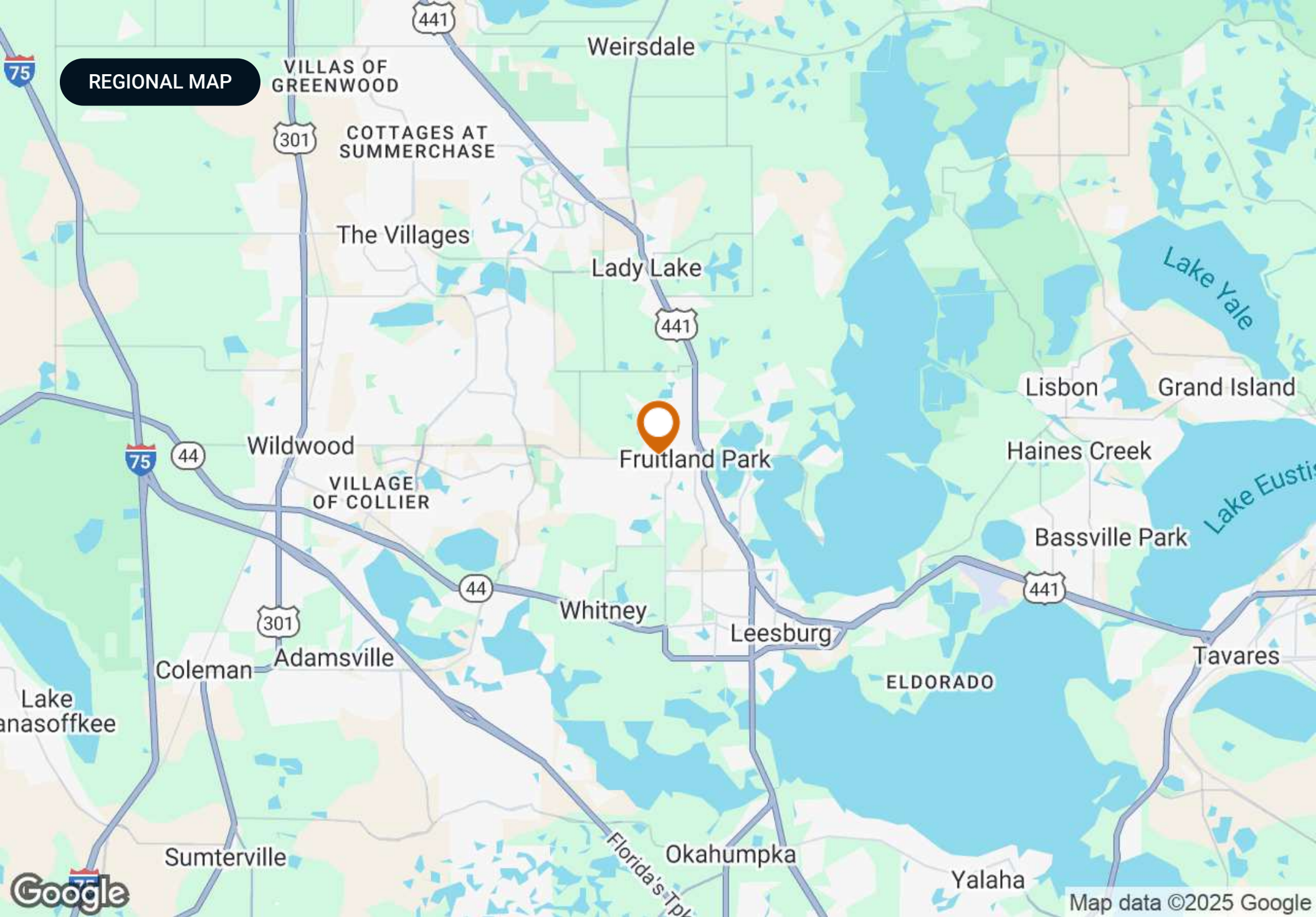


17,500 ±
Cars/Day

Miller Blvd

The Villages®







LOCATION MAP

Spring Lake Rd

Lynn Ave

Fruitland Park Blvd

Leesburg Blvd

466A

Cutoff Rd

N Valley Rd

Miller Blvd

Janice Dr

W Miller St

Fountain Lake

Shiloh St

Jewell St

Hall St

Poinsettia Ave

Lewis St

Rose Ave

Patricia Ave

College Ave

College Ave

Rose Ave

W Berckman St

Google

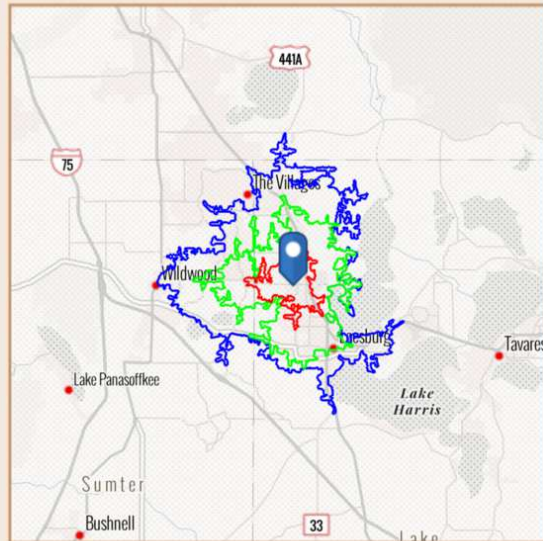
Map data ©2025

DEMOGRAPHICS

BENCHMARK DEMOGRAPHICS

2048 Miller Blvd, Fruitland Park, Florida, 34731

Drive time of 5 mins, 10 mins, & 15 mins



Based on ideas by Gary M. Ralston, CCIM, SIOR, CPM, CRE, CLS, CDP, CRX, FRICS

Source: This infographic contains data provided by Esri (2025, 2030), Esri-Data Axle (2025)

THE CCIM INSTITUTE



	DRIVE TIME			GEOGRAPHY			
	5 mins	10 mins	15 mins	Counties Lake County	CBSAs Orlando-Kissimmee-Sanford, FL Metropolitan Statistical Area	States Florida	USA
AGE SEGMENTS							
0 - 4	4.78%	3.57%	2.46%	4.48%	5.07%	4.69%	5.39%
5 - 9	5.11%	3.68%	2.56%	4.84%	5.43%	5.03%	5.75%
10 - 14	5.13%	3.88%	2.78%	5.20%	5.87%	5.34%	5.98%
15 - 19	4.91%	3.59%	2.60%	5.24%	6.71%	5.84%	6.47%
20 - 34	13.61%	10.41%	7.72%	15.94%	21.69%	18.43%	20.33%
35 - 54	18.75%	14.39%	11.13%	22.32%	26.35%	24.41%	25.20%
55 - 74	34.58%	39.48%	43.41%	27.72%	21.48%	25.55%	22.82%
75+	13.03%	21.01%	27.33%	14.23%	7.40%	10.74%	8.05%
HOUSEHOLD INCOME							
<\$15,000	14.1%	12.1%	8.9%	9.7%	6.9%	8.0%	8.3%
\$15,000-\$24,999	8.1%	6.5%	6.0%	5.9%	5.4%	5.8%	5.9%
\$25,000-\$34,999	6.7%	7.5%	7.9%	7.5%	6.2%	6.7%	6.3%
\$35,000-\$49,999	10.6%	12.3%	11.1%	9.6%	9.7%	10.5%	9.8%
\$50,000-\$74,999	16.7%	17.5%	17.7%	17.2%	17.0%	16.9%	15.6%
\$75,000-\$99,999	10.8%	13.2%	14.9%	14.4%	13.4%	12.9%	12.5%
\$100,000-\$149,999	16.0%	17.7%	19.3%	19.4%	19.9%	18.4%	17.8%
\$150,000-\$199,999	9.5%	7.2%	7.9%	9.1%	9.6%	8.7%	9.8%
\$200,000+	7.6%	6.0%	6.4%	7.2%	11.7%	12.1%	14.0%
KEY FACTS							
Population	8,572	45,323	108,682	428,905	2,932,740	23,027,836	339,887,819
Daytime Population	7,686	48,235	121,850	385,396	2,983,283	22,846,618	338,218,372
Employees	3,421	14,699	28,768	188,466	1,520,600	10,832,721	167,630,539
Households	3,763	21,507	54,895	178,895	1,088,691	9,263,074	132,422,916
Average HH Size	2.27	2.09	1.96	2.37	2.65	2.43	2.50
Median Age	52.5	63.8	68.5	47.8	38.8	43.6	39.6
HOUSING FACTS							
Median Home Value	408,247	404,438	416,444	368,757	426,496	416,969	370,578
Owner Occupied %	75.2%	77.8%	81.5%	76.9%	61.7%	67.2%	64.2%
Renter Occupied %	24.9%	22.2%	18.5%	23.1%	38.3%	32.8%	35.8%
Total Housing Units	4,115	24,312	64,049	200,922	1,194,509	10,635,372	146,800,552
INCOME FACTS							
Median HH Income	\$66,139	\$65,970	\$72,518	\$75,113	\$82,265	\$78,205	\$81,624
Per Capita Income	\$40,632	\$41,541	\$47,286	\$39,299	\$41,326	\$44,891	\$45,360
Median Net Worth	\$239,140	\$336,477	\$479,497	\$280,511	\$208,581	\$253,219	\$228,144

RETAILER MAP



Map data ©2025 Google Imagery ©2025 Airbus, Landsat / Copernicus, Maxar Technologies

ADDITIONAL PHOTOS



ADVISOR BIOGRAPHY



Tim Sennett, MBA, ALC, CCIM

Senior Advisor

tim@saundersrealestate.com

Direct: **877-518-5263 x329** | Cell: **352-460-1011**

Professional Background

Tim Sennett, MBA, ALC, CCIM is a Senior Advisor at Saunders Real Estate.

Since his first sale in 1985, Tim has specialized in the commercial and vacant land sector. In 1999, he earned his CCIM (Certified Commercial Investment Member) designation. Tim also holds his ALC (Accredited Land Consultant) designation through the REALTORS® Land Institute (RLI). His experience, combined with his CCIM and ALC recognitions, qualifies Tim as an expert in land and commercial real estate.

Tim has received numerous awards in his field, including Realtor of the Year. He has served various roles under REALTOR® Associations—including President—and has chaired several committees, like the Commercial Committee. Currently, Tim serves on the national Governmental Affairs Committee of the REALTORS® Land Institute (RLI) and serves on the board of directors for the RLI Florida Chapter.

Tim has served on the City of Leesburg's Planning and Zoning Commission for 16 years—13 years as chairman—and is a 2002 graduate of Leadership Lake County. He has twice served as President on the local hospice operations board as well as been selected to be on their Board Emeritus. Tim has also served on the Board of Directors for Central Florida Health Alliance, the two local hospitals' governing board, and four times as president on the local Boys and Girls Club Board. He has been awarded President of the Year, Jaycee of the Year, and his Senatorship from the United States, Florida, and Leesburg Jaycee organizations.

In pursuing his education, Tim earned an AA from Lake Sumter Community College, a BA in Business from Barry University, and an MBA from Crummer Graduate School of Business at Rollins College.

Tim was born in Florida and grew up in the Leesburg area. He has two daughters, Jessie and Tre'Lannah, and two "grandbuddies," Jackson and Jonah.

Tim specializes in

- Commercial
- Vacant Land



SAUNDERS
REAL ESTATE



SAUNDERS
LAND



SAUNDERS
COMMERCIAL

Serving the Southeast

At Saunders Real Estate, we deliver full-service real estate solutions across the Southeast, built on more than 30 years of trusted experience. Our dedicated teams—experts in both land and commercial real estate—offer tailored guidance backed by deep regional insight and a proven track record. We believe that successful outcomes start with strong relationships built on trust and a shared commitment to your goals.



877-518-5263 • info@saundersrealestate.com