

13451 MCGREGOR BLVD. | FORT MYERS, FL 33908

SPACE AVAILABLE AT CYPRESS SQUARE

FOR LEASE

CONTACT

Chris Ferritto

239-310-6257

chris@mayhughcommercial.com

Chase Mayhugh, SIOR, CCIM

239-278-4945

chase@mayhughcommercial.com



MAYHUGH
COMMERCIAL ADVISORS

13099 S. Cleveland Ave. Suite 410
Fort Myers, FL 33907

MAYHUGHCOMMERCIAL.COM

Upscale Neighborhood Center in Affluent South Fort Myers.

This prominent retail and office center, located at the intersection of McGregor Blvd. and Cypress Lake Dr., offers an excellent location and visibility. Set in a beautiful park-like setting, the center features upscale shops and restaurants, including long-term tenants like Prawnbroker and Blue Sushi. With ample parking, great synergy, and easy access, this center is the place to be in South Fort Myers.

AVAILABILITY

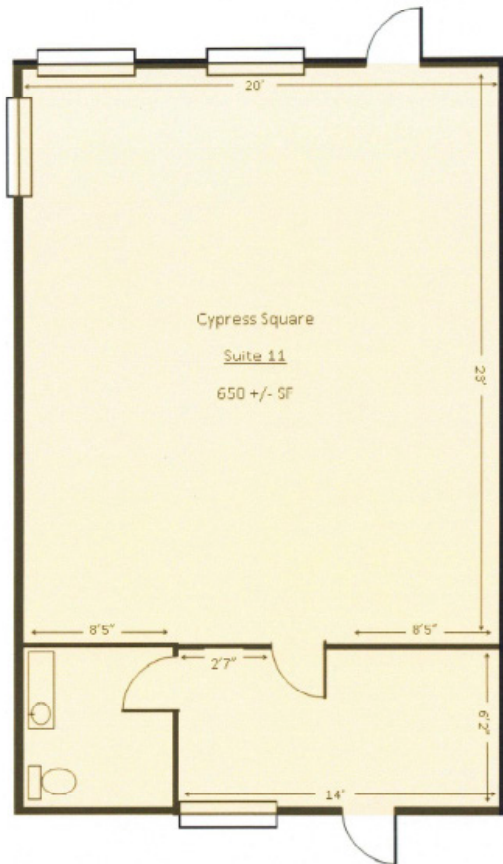
	Unit 11	Unit 31
SPACE AVAILABLE	650 SF	1,231 SF
LEASE RATE	\$23.00/NNN	\$16.00/NNN
CAM	\$8.75	\$8.75

PROPERTY DETAILS

TOTAL BUILDING SIZE	39,664± SF
ZONING	C-1 (Lee County)
YEAR BUILT	1977

UNIT 11

FLOOR PLAN

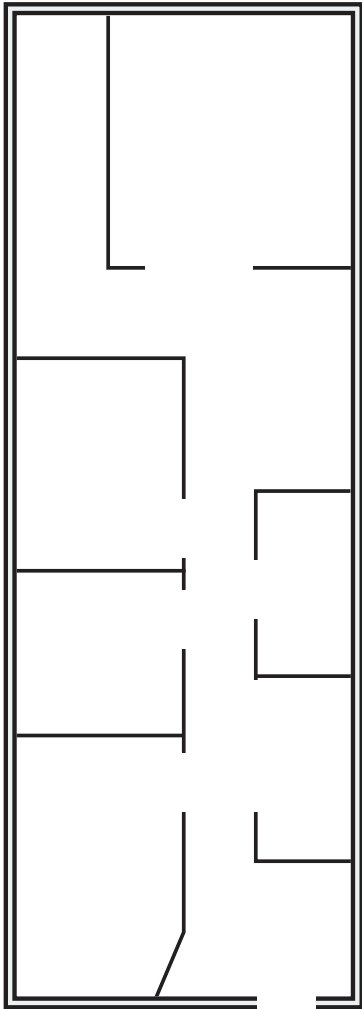


CYPRESS SQUARE EXTERIOR PHOTOS



UNIT 31

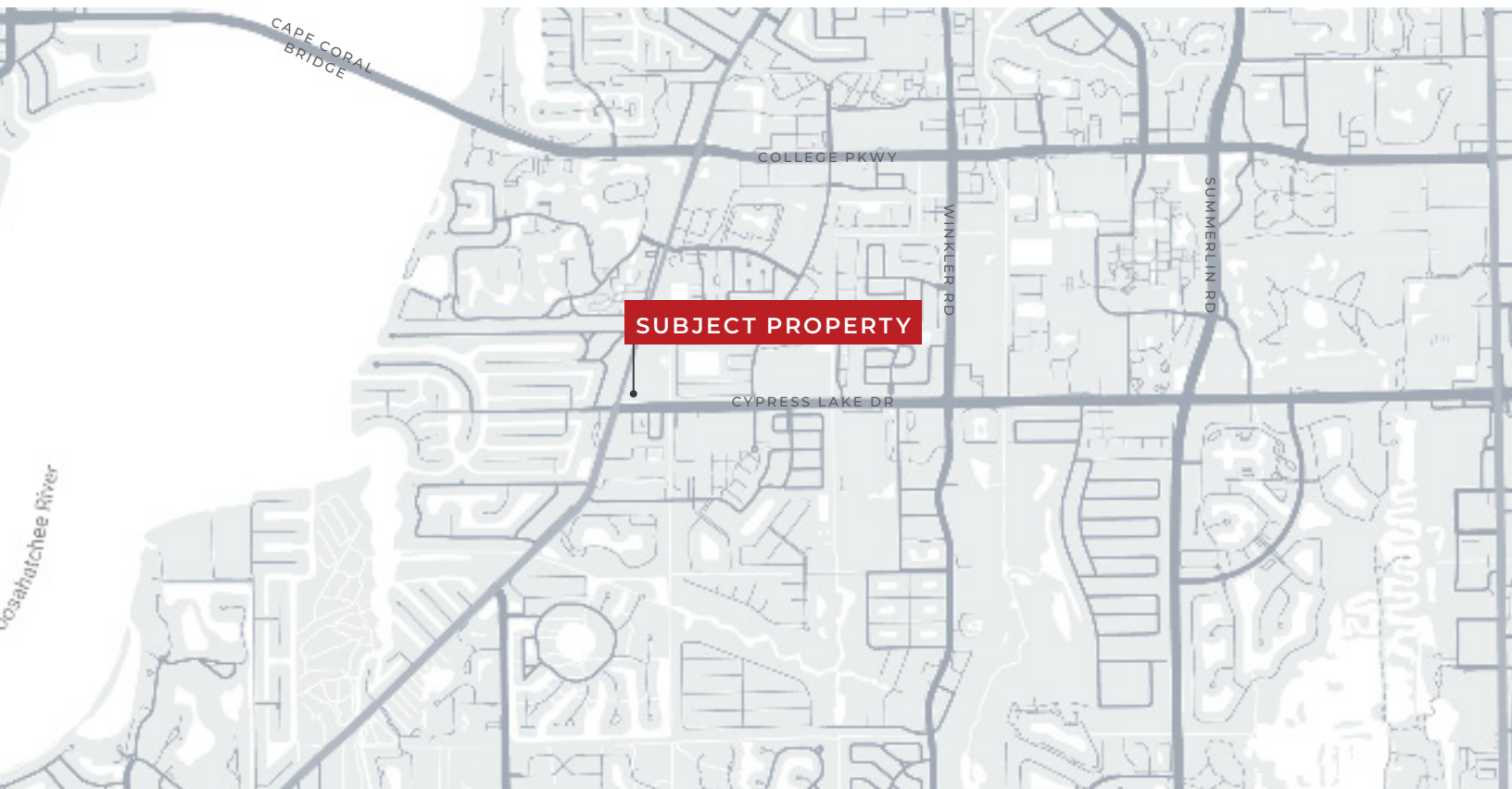
FLOOR PLAN



This floorplan is for illustrative purposes only and is not drawn to scale.

PHOTOS





This marketing brochure serves as a reference for informational purposes only and does not constitute an offer for sale or lease, nor does it serve as a solicitation for an offer to purchase or lease. While the information contained herein is believed to be reliable, its accuracy, completeness, or reliability cannot be guaranteed. Prospective buyers or lessees are encouraged to conduct their own investigations and due diligence to verify the information provided. All descriptions, dimensions, conditions, permissions for use, and other details are offered in good faith but are subject to verification. No express or implied warranty or representation is made regarding the accuracy of the information herein. The content is subject to errors, omissions, price changes, withdrawal without notice, and any special listing conditions imposed by our principals.