

FOR SALE
1911 Dana Dr., Fort Myers, FL 33907



Michael J. Frye, CCIM
(239) 281-0441 | mfrye@ccim.net

REMAX REALTY GROUP
7910 Summerlin Lakes Dr.
Fort Myers, FL 33907

O: (239) 489-0444
F: (239) 790-4800

ftmyerscommercial.com



[@remaxrealtygroupswfl](https://www.facebook.com/remaxrealtygroupswfl)

FOR SALE

1911 Dana Dr., Fort Myers, FL 33907

Confidentiality & Disclaimer

All materials and information received or derived from **REMAX Realty Group** its directors, officers, agents, advisors, affiliates and/or any third-party sources are provided without representation or warranty as to completeness, veracity, or accuracy, condition of the property, compliance or lack of compliance with applicable governmental requirements, developability or suitability, financial performance of the property, projected financial performance of the property for any party's intended use or third-party other matters.

Neither **REMAX Realty Group** its directors, officers, agents, advisors, or affiliates makes any representation or warranty, express or implied, as to accuracy or completeness of the any materials or information provided, derived, or received. Materials and information from any source, whether written or verbal, that may be furnished for review are not a substitute for a party's active conduct of its own due diligence to determine these and other matters of significance to such party. **REMAX Realty Group** will not investigate or verify any such matters or conduct due diligence for a party unless otherwise agreed in writing.

EACH PARTY SHALL CONDUCT ITS OWN INDEPENDENT INVESTIGATION AND DUE DILIGENCE. Any party contemplating or under contract or in escrow for a transaction is urged to verify all information and to conduct their own inspections and investigations including through appropriate third-party independent professionals selected by such party. All financial data should be verified by the party including by obtaining and reading applicable documents and reports and consulting appropriate independent professionals. **REMAX Realty Group** makes no warranties and/or representations regarding the veracity, completeness, or relevance of any financial data or assumptions. **REMAX Realty Group** does not serve as a financial advisor to any party regarding any proposed transaction. All data and assumptions regarding financial performance, including that used for financial modeling purposes, may differ from actual data or performance. Any estimates of market rents and/or projected rents that may be provided to a party do not necessarily mean that rents can be established at or increased to that level. Parties must evaluate any applicable contractual and governmental limitations as well as market conditions, vacancy factors and other issues in order to determine rents from or for the property.

Legal questions should be discussed by the party with an attorney. Tax questions should be discussed by the party with a certified public accountant or tax attorney. Title questions should be discussed by the party with a title officer or attorney. Questions regarding the condition of the property and whether the property complies with applicable governmental requirements should be discussed by the party with appropriate engineers, architects, contractors, other consultants and governmental agencies. All properties and services are marketed by Results Commercial in compliance with all applicable fair housing and equal opportunity laws.

CONTENTS

Property Information	3
Location Information	9
Demographics	14
Meet The Team	17

Michael J. Frye, CCIM
(239) 281-0441 | mfrye@ccim.net

REMAX REALTY GROUP
7910 Summerlin Lakes Dr.
Fort Myers, FL 33907

O: (239) 489-0444
F: (239) 790-4800

ftmyerscommercial.com



[@remaxrealtygroupswfl](https://www.facebook.com/remaxrealtygroupswfl)



REMAX[®]

COMMERCIAL[®]

REMAX REALTY GROUP

PRESENTED BY: Michael J. Frye, CCIM
(239) 281-0441
mfrye@ccim.net

FOR SALE

1911 Dana Dr., Fort Myers, FL 33907

Sale Price: \$849,000

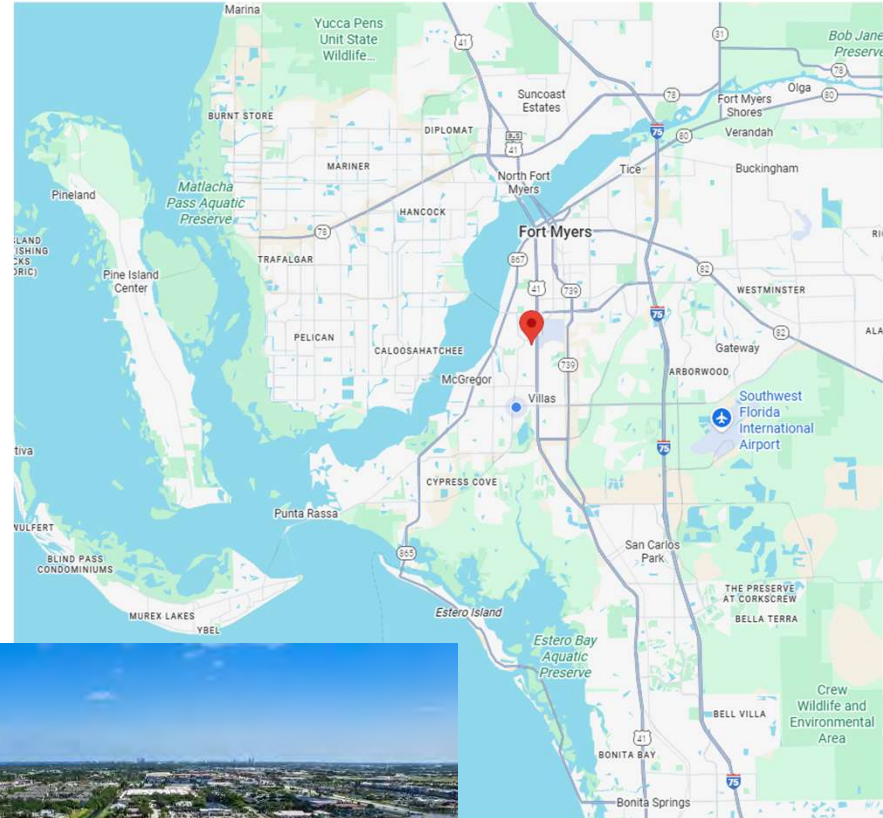
Total Building Size: 4,258± Sq. Ft. | 2 Stories
3,797± Sq Ft Industrial
461± Sq Ft Office

2025 Property Taxes: \$6,981.25

Zoning: C2 – Community Commercial

Strap #: 11-45-24-00-00005.0280

Year Built: 1972 | New Roof: 2024

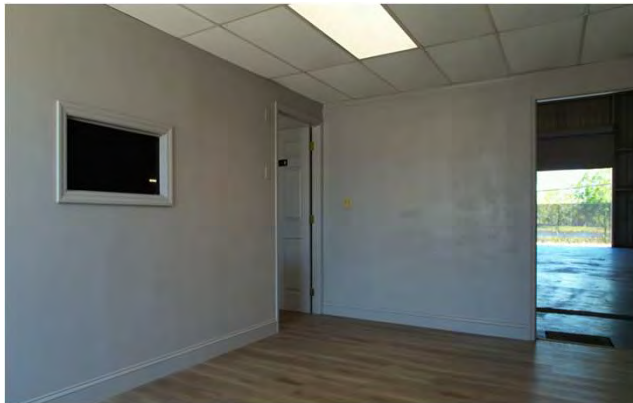


PRESENTED BY: Michael J. Frye, CCIM
(239) 281-0441
mfrye@ccim.net

FOR SALE

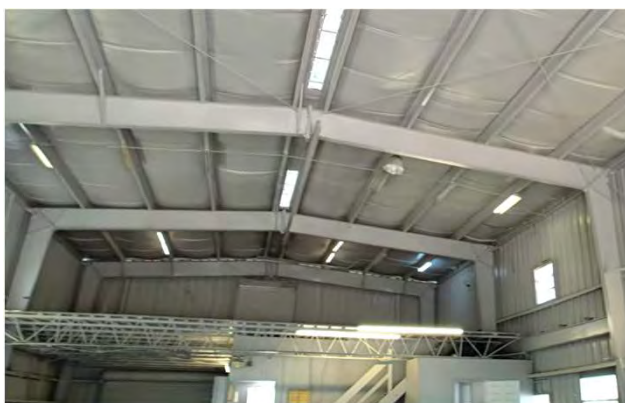
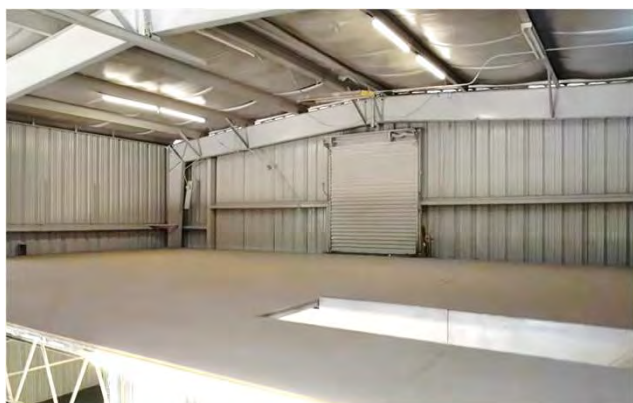
1911 Dana Dr., Fort Myers, FL 33907

- This property is located in a rapidly growing area near US 41 & Colonial Blvd.
- Excellent visibility & accessibility
- Ideal for a variety of commercial or industrial uses with over 4,200 SF of versatile space
- Clear Ceiling Height: 16'
- Fenced Lot, Mezzanine, Front Loading, Fluorescent Lighting, Yard



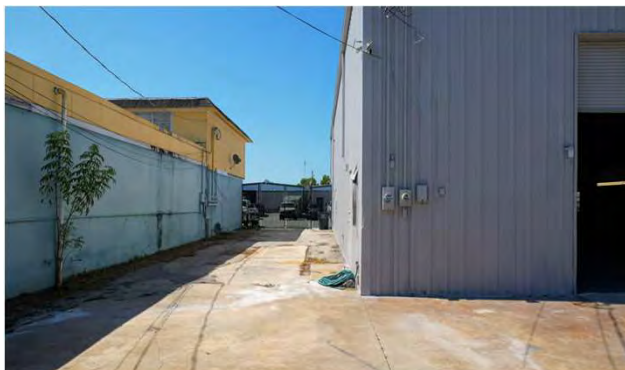
PRESENTED BY: Michael J. Frye, CCIM
(239) 281-0441
mfrye@ccim.net

FOR SALE
1911 Dana Dr., Fort Myers, FL 33907



PRESENTED BY: Michael J. Frye, CCIM
(239) 281-0441
mfrye@ccim.net

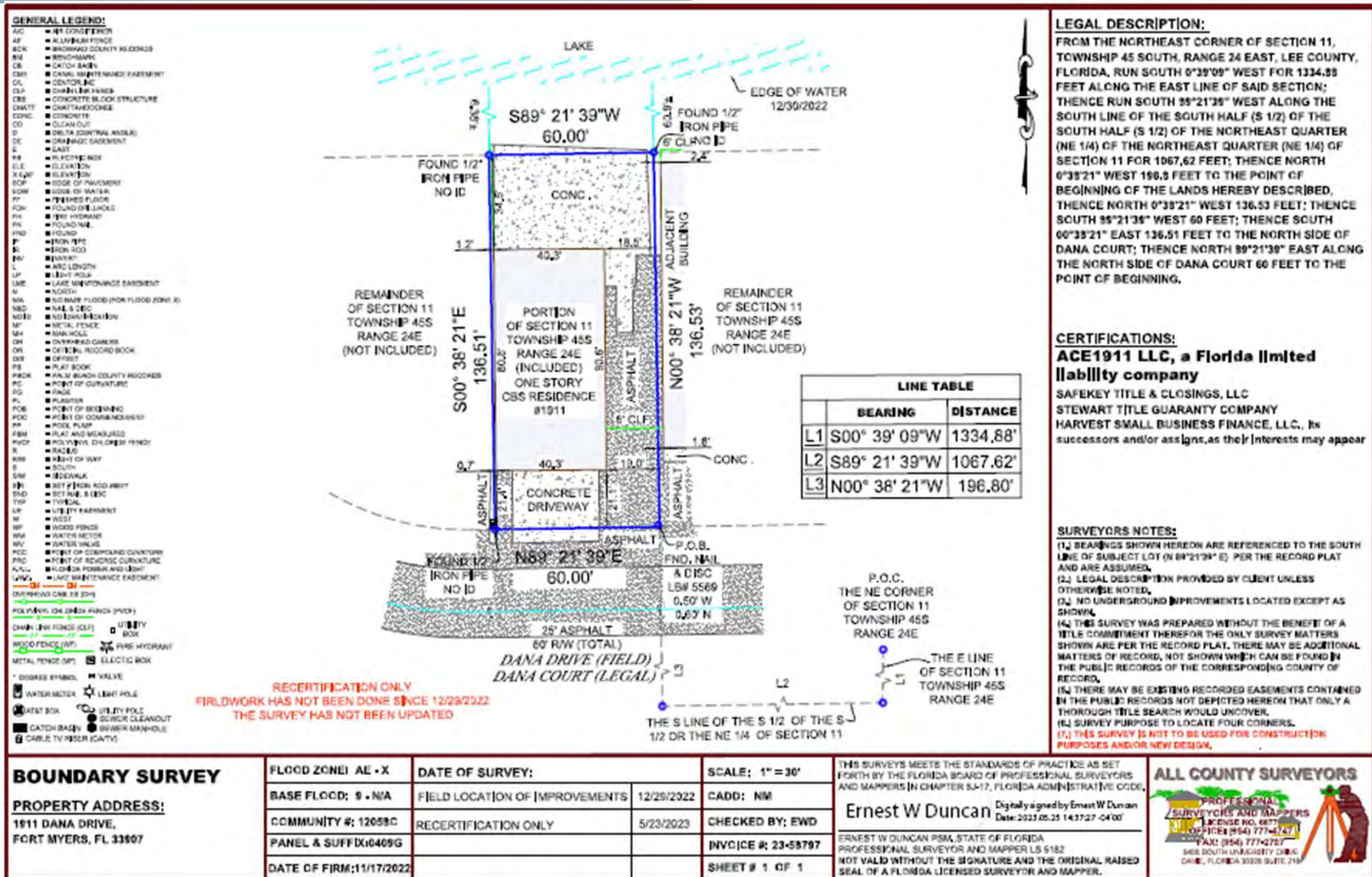
FOR SALE
1911 Dana Dr., Fort Myers, FL 33907



PRESENTED BY: Michael J. Frye, CCIM
(239) 281-0441
mfrye@ccim.net

FOR SALE

1911 Dana Dr., Fort Myers, FL 33907



PRESENTED BY: Michael J. Frye, CCIM
(239) 281-0441
mfrye@ccim.net

LOCATION INFORMATION



PRESENTED BY: Michael J. Frye, CCIM
(239) 281-0441
mfrye@ccim.net

ABOUT FORT MYERS

Fort Myers is a city located in Lee County, Florida along the Caloosahatchee River. Fort Myers has a population of 100,736. It is also the county seat of Lee County. Fort Myers is currently growing at a rate of 3.45% annually and its population has increased by 15.42% since the most recent census, which recorded a population of 87,279 in 2020.

ARTICLE: [Fort Myers Takes 2nd Place among Small Cities for New Business Growth](#)

Luminary Hotel



Edison Ford Estates



Caloosahatchee River



Lakes Park



SWFL Eagle Cam



Golf Courses (180+ in SWFL)



PRESENTED BY: Michael J. Frye, CCIM
(239) 281-0441
mfrye@ccim.net

Fort Myers Development Activity Map

Royal Palm Coast Realtor Association

- 3-story commercial building with 35,000 Sq Ft of Floor area

The Arwyn (Summerlin Apartments)

- 230 Multi-Family units in 3 apartment buildings & clubhouse

Royal Palm Square

- Mixed-Use Development will consist of a maximum of 35 dwelling units per acre, 175 hotel rooms, and 250,000 Sq Ft of commercial uses

Home Depot

- 136,000 Sq Ft Building

Costco Warehouse

- Warehouse and fueling facility

Bonavie Cove

- Gated community featuring 238 paired villas and amenities

Edison Mall Building Renovations

- Interior renovation of the old Sears building to support new tenants: Winmart, Hungry Cow, and Gohan AYCE Buffet

7 Brew

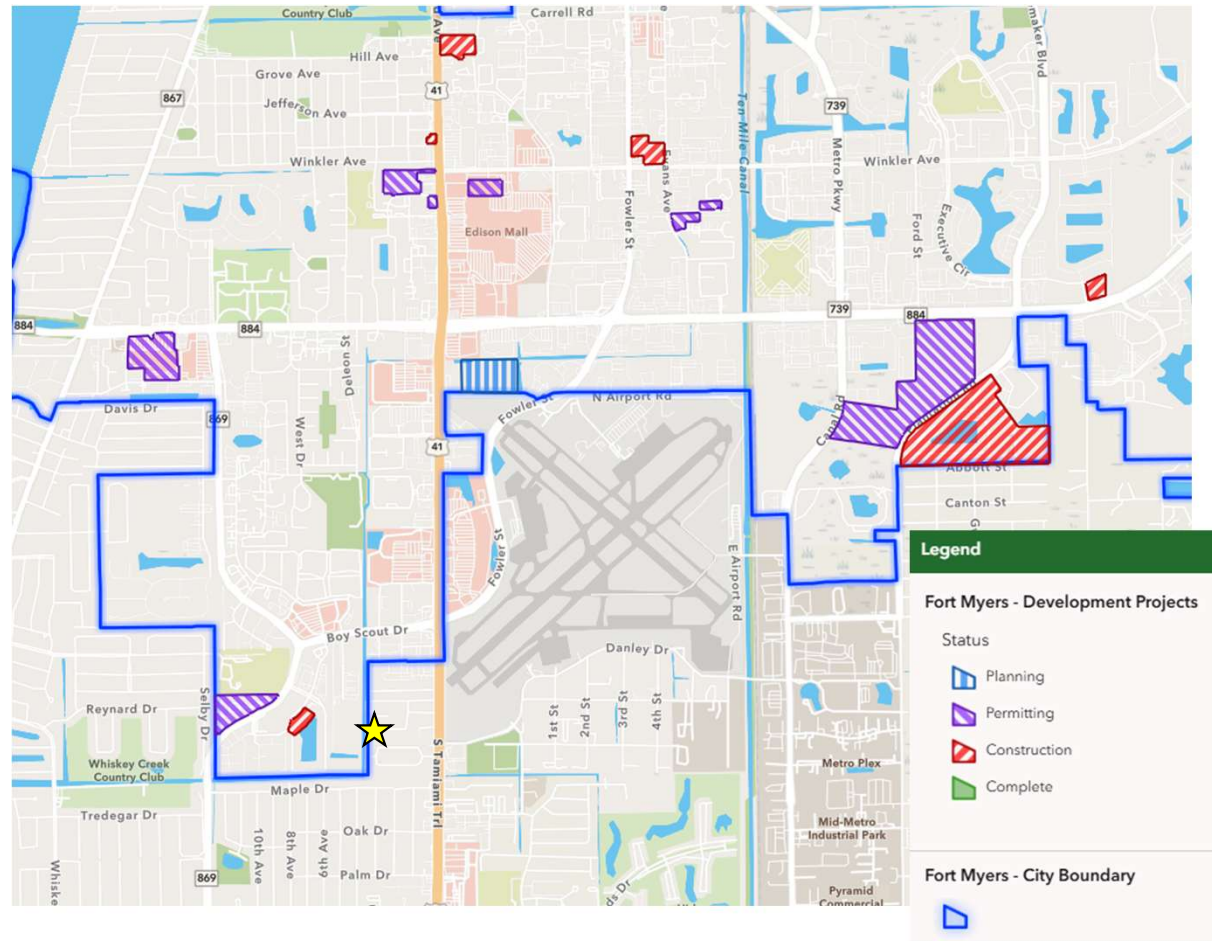
- New Drive-Thru Coffee Shop

1875 Commercial Dr Multifamily

- Development consisting of 322 residential units, 4-story garage, clubhouse and amenities

Lee Health Clinical Lab Data Center

- Facility is a business occupancy centralized laboratory and data center serving Lee Memorial Health System



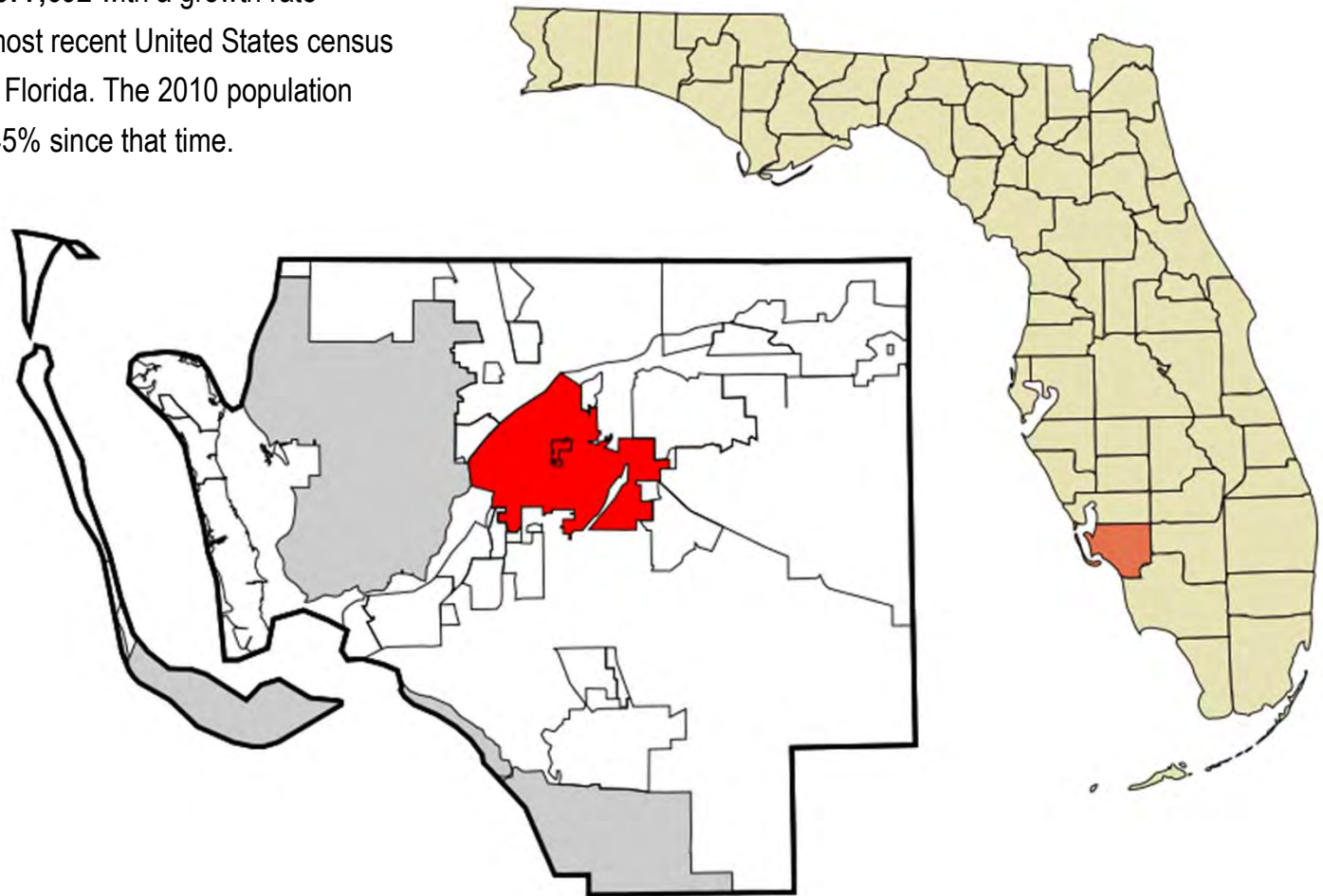
PRESENTED BY: Michael J. Frye, CCIM
(239) 281-0441
mfrye@ccim.net

Scan the QR Code to view the development map



LEE COUNTY MAP

Lee County's estimated 2025 population is **877,692** with a growth rate of 1.94% in the past year according to the most recent United States census data. Lee County is the 9th largest county in Florida. The 2010 population was **620,481** and has seen a growth of 41.45% since that time.



PRESENTED BY: Michael J. Frye, CCIM
(239) 281-0441
mfrye@ccim.net

ZONING INFORMATION

ZONING – C2 – Community Commercial

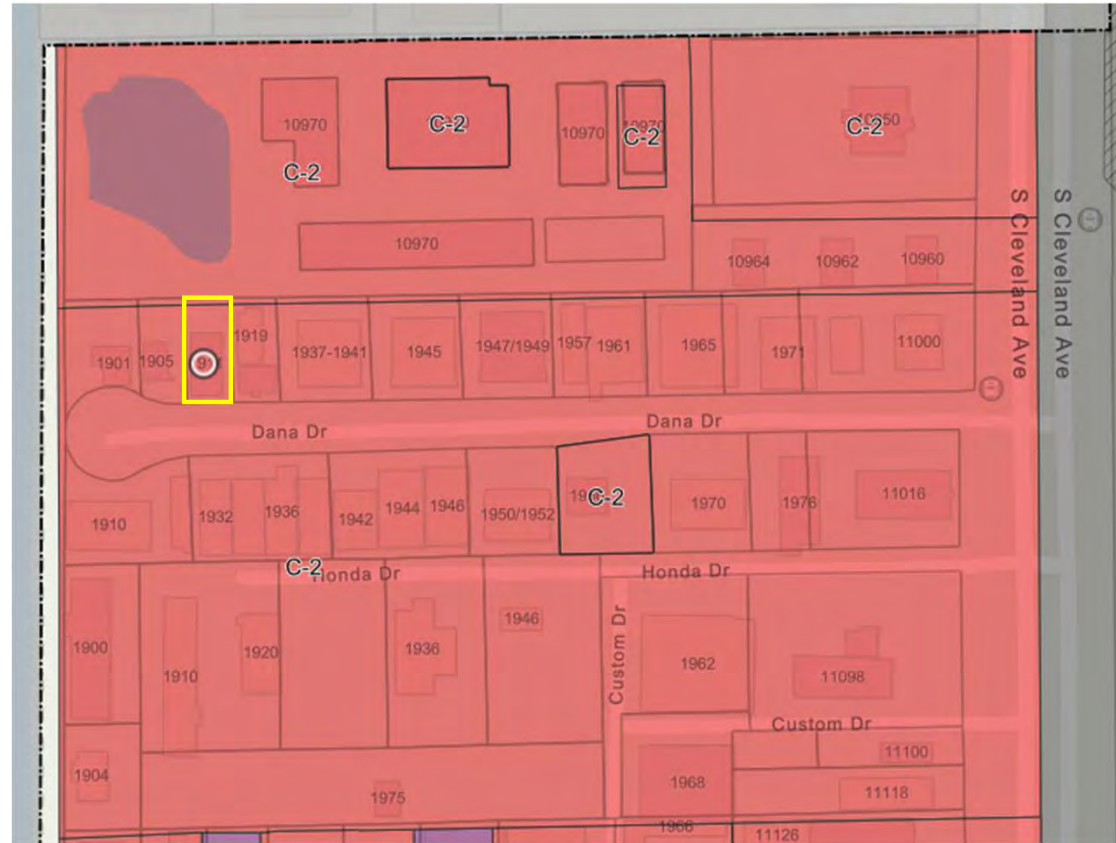
34-841 – Purpose and intent.

(b) *C-1A, C-1 and C-2 Commercial Districts*. The purpose and intent of the C-1A, C-1 and C-2 Districts is to regulate the continuance of commercial and select residential land uses and structures lawfully existing in the C-1A, C-1 and C-2 Districts as of August 1, 1986, and as originally permitted by the County Zoning Regulations of 1962, as amended, and 1978, as amended, respectively. Subsequent to February 4, 1978, no land or water shall be rezoned into the C-1A, C-1 or C-2 Districts, unless located within the Mixed-Use Overlay as identified on Lee Plan Map 1-C. In no case shall new development be permitted in any existing C-1A, C-1 or C-2 District which is not consistent with the Lee Plan.

MUNICODE CODIFICATION

Click this link for a list of Permitted Uses

https://library.municode.com/fl/lee_county/codes/land_development_code?nodeId=LADECO_CH34ZO_ARTVIDIRE_DIV6CODI_S34-841PUIN



PRESENTED BY: Michael J. Frye, CCIM
(239) 281-0441
mfrye@ccim.net

DEMOGRAPHICS

PRESENTED BY: Michael J. Frye, CCIM
(239) 281-0441
mfrye@ccim.net

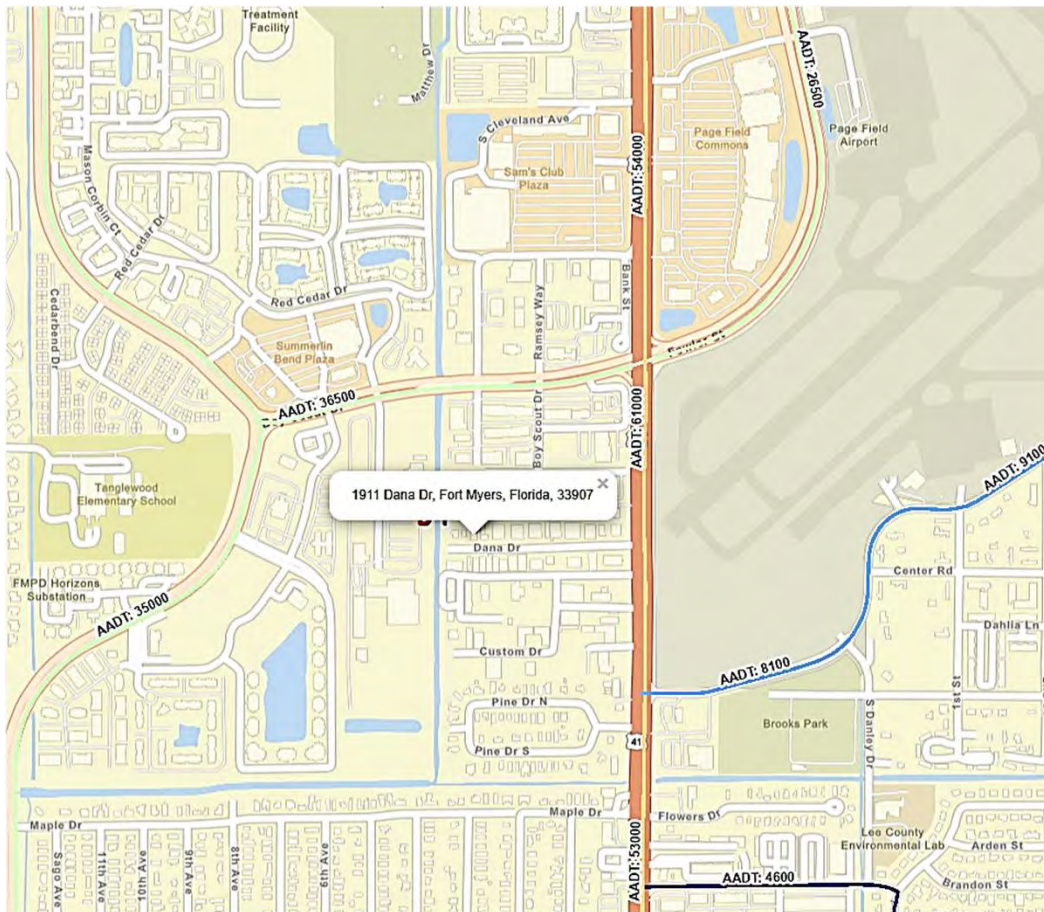
DEMOGRAPHICS MAP & REPORT

Population	2 Miles	5 Miles	10 Miles	Households & Income	2 Miles	5 Miles	10 Miles
Total Population	35,651	163,801	523,244	Total Households	15,416	74,437	221,839
Average Age	40	48	48	# of Persons per HH	2.2	2.1	2.3
				Average HH Income	\$73,566	\$81,191	\$82,469



PRESENTED BY: Michael J. Frye, CCIM
 (239) 281-0441
mfrye@ccim.net

TRAFFIC COUNT



Traffic Count 2024

US 41	61,000 AADT
Boy Scout Dr.	36,500 AADT

PRESENTED BY: Michael J. Frye, CCIM
(239) 281-0441
mfrye@ccim.net

MEET THE TEAM



MICHAEL J. FRYE, CCIM|CEO
(239) 281-0441
mfrye@ccim.net

