

For Lease
±12,017 SF
HQ Office Space

1926

YOUR NAME HERE

**MOVE-IN
READY
TOP-TIER
BUILDOUT**

CenterPoint Plaza

1926 10th Avenue North | Lake Worth, FL 33461

SPECTACULAR HQ WITH SIGNAGE

Property Features

- HQ for lease, with immediate I-95 access
- Fully built-out space, ready for your team
- Professional office building with well-kept landscaping, abundant parking and professional on-site property management
- Exceptional value and high visibility building signage in central Palm Beach County
- Well-positioned near high-traffic retailers and residential neighborhoods

Key Features:



Move-in ready
full floor HQ space



Prime, central location,
adjacent to I-95



High visibility
building signage

For More Information:

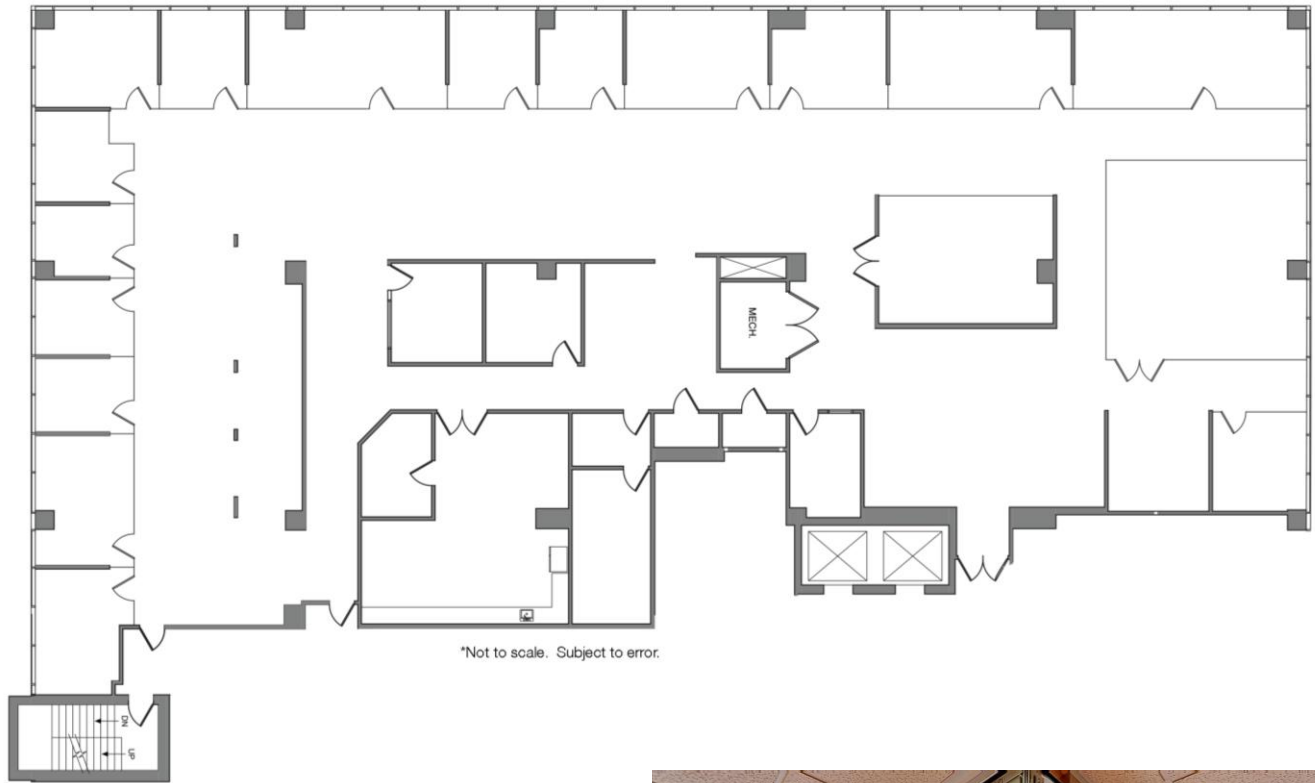
Patrick Almand, Associate
443 370 8665 | palmand@mhcreal.com

Jason Sundook, SIOR
Principal | jsundook@mhcreal.com



FOR LEASE: CENTREPOINT PLAZA

Best Corporate HQ Value | Ready When You Are



Suite 300 ±12,017 SF

Beautifully finished and sprawling office space.

- Double-door entry off elevator lobby, near restrooms
- Glass-walled conference room and perimeter offices
- Flexible, open workspace
- Large breakroom with full kitchen
- High-end finishes including wood floors and glass accents
- Building signage available for qualified tenants

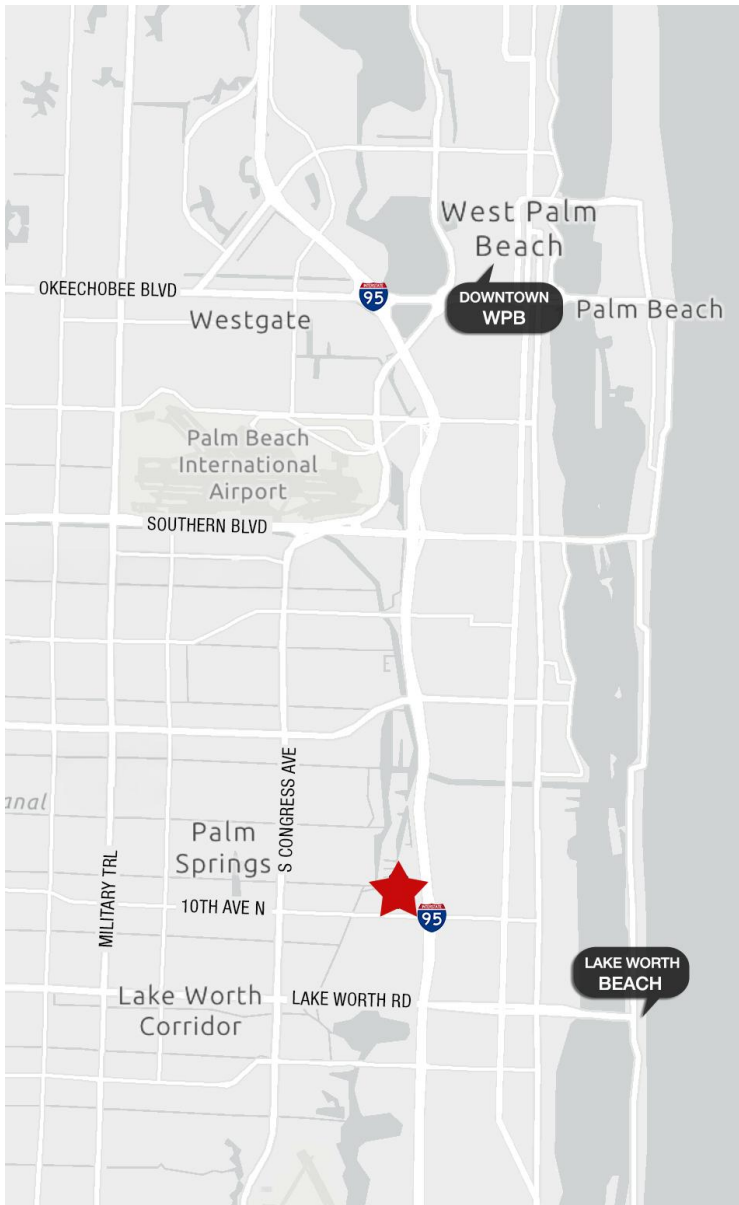


For More Information:

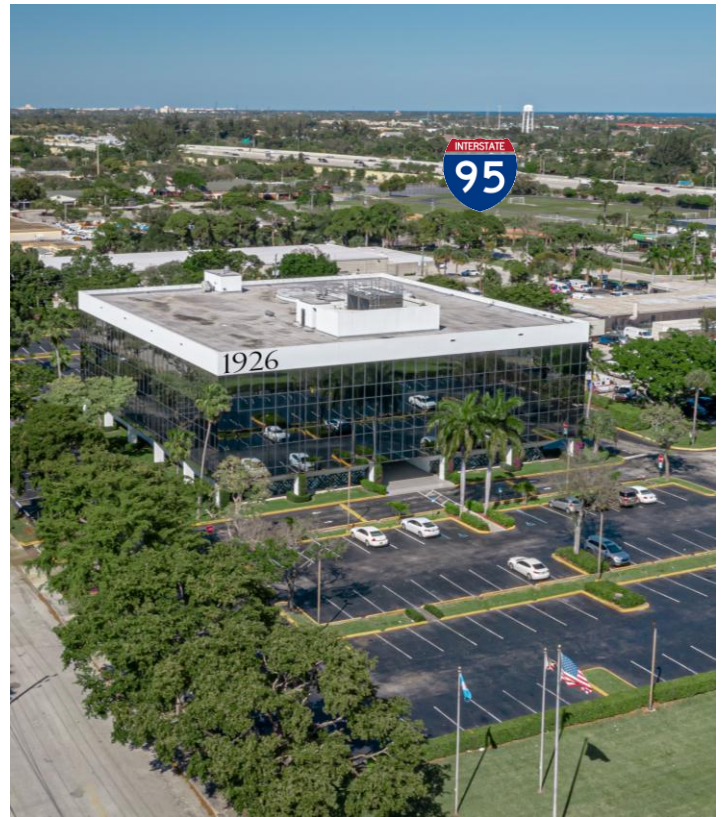
Jason Sundook, SIOR & Patrick Almand

561 471 8000 | www.mhcreal.com

FOR LEASE: CENTREPOINT PLAZA
Connected. Convenient. Right Off I-95.



**Positioned directly off I-95
with fast access to PBIA,
Downtown WPB, and major
corridors in all directions.**



ACCESS. VISIBILITY. VALUE.

Ready to position your business for better visibility, access, and value? Let's talk about how this location delivers - all without the downtown price tag.

Whether you're scaling operations, centralizing your team, or seeking a more cost-effective HQ alternative, CentrePoint Plaza puts you at the heart of Palm Beach County - without the congestion or cost of urban core locations.

CALL TODAY

 **561 471 8000**

Patrick Almand, Associate
443 370 8665 | palmand@mhcreal.com

Jason Sundook, SIOR
Principal | jsundook@mhcreal.com