

# Property Summary

137 E Maine Ave, Longwood, FL 32750

**PRICE REDUCED**



## PROPERTY DESCRIPTION

Price drop! Don't miss the opportunity to own commercial property in Seminole County at this price. Operate your business in the structure, or demo and build on the commercial land. The historic structure was constructed in 1932 (updated in 2010). Lots of options for future use. Please verify all details with the City of Longwood.

## PROPERTY HIGHLIGHTS

- Short walk to the Sunrail
- Value add property
- Historic Home Built in 1932
- Zoned General Commercial
- Prime Location

## OFFERING SUMMARY

Sale Price:	\$279,000
Lot Size:	10,350 SF

DEMOGRAPHICS	0.3 MILES	0.5 MILES	1 MILE
Total Households	235	679	3,054
Total Population	605	1,720	7,864
Average HH Income	\$83,086	\$79,502	\$83,862

Marla Brown

855.452.0263 x375

marla.brown@expcommercial.com



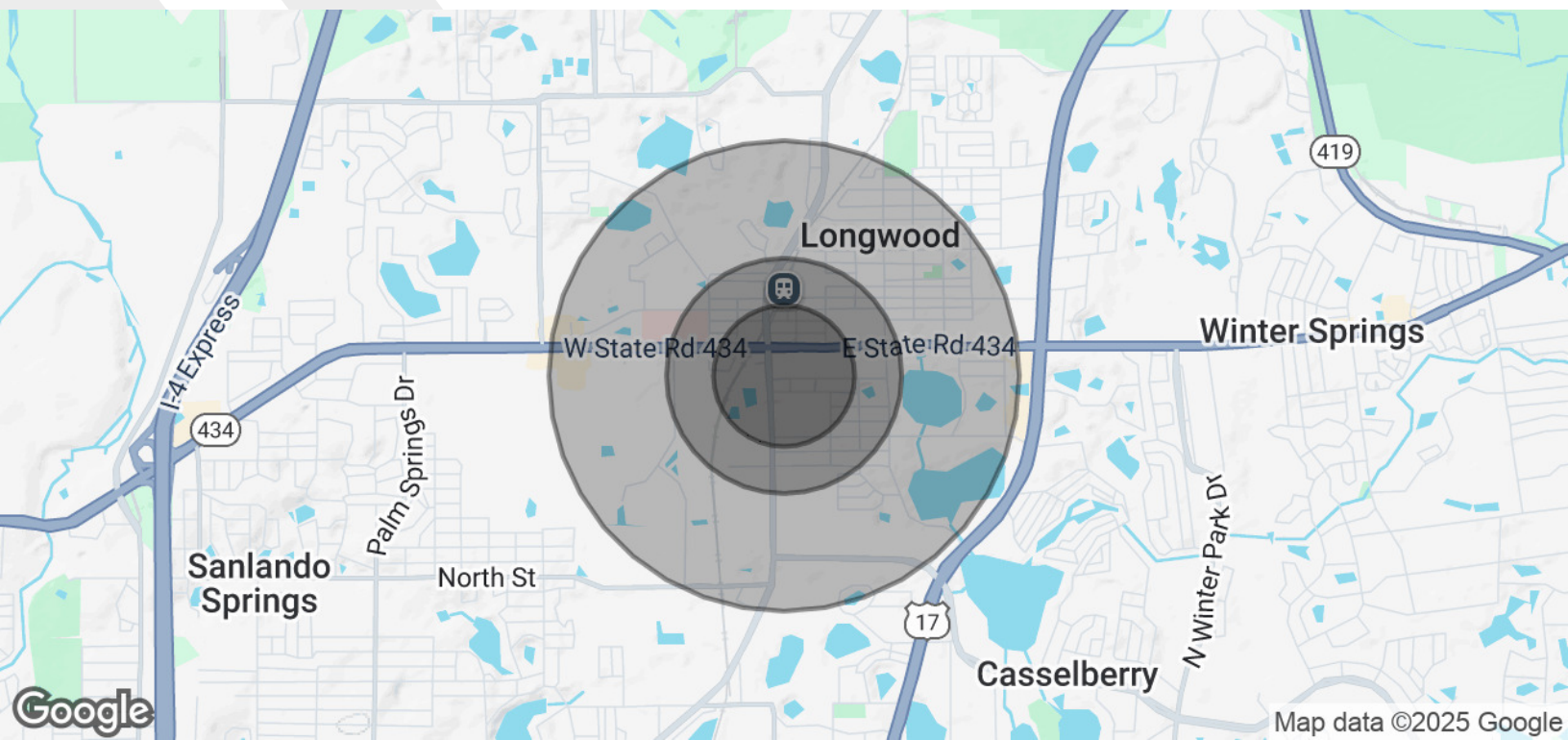
eXp Commercial, LLC, its direct and indirect parents and their subsidiaries (together, "We") obtained the information above from sources believed to be reliable, however, We have not verified its accuracy and make no guarantee, warranty or representation, expressed or implied, about such information. The information contained above is submitted subject to the possibility of errors, omissions, price changes, rental or other conditions, prior sale, lease or financing, or withdrawal without notice. Any projections, opinions, assumptions or estimates of the information contained above or provided in connection therewith, either expressed or implied, are for example only, and they may not represent current or future performance of the subject property. You, together with your tax and legal advisors, should conduct your own thorough investigation of the subject property and potential investment.



# Demographics Map & Report

137 E Maine Ave, Longwood, FL 32750

FOR SALE



POPULATION	0.3 MILES	0.5 MILES	1 MILE
Total Population	605	1,720	7,864
Average Age	45	45	44
Average Age (Male)	43	43	42
Average Age (Female)	47	47	46

HOUSEHOLDS & INCOME	0.3 MILES	0.5 MILES	1 MILE
Total Households	235	679	3,054
# of Persons per HH	2.6	2.5	2.6
Average HH Income	\$83,086	\$79,502	\$83,862
Average House Value	\$371,026	\$354,390	\$342,710

Demographics data derived from AlphaMap

Marla Brown  
855.452.0263 x375  
marla.brown@expcommercial.com



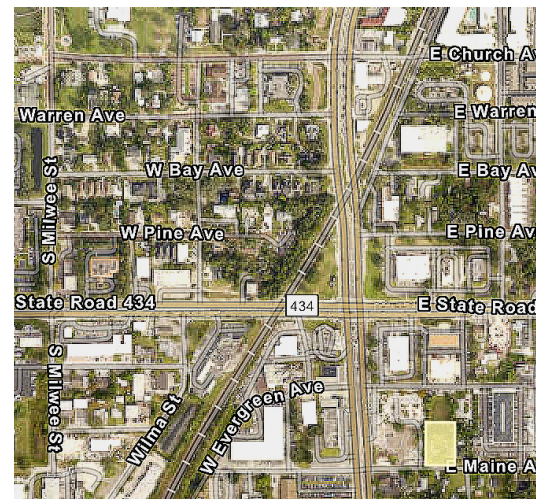
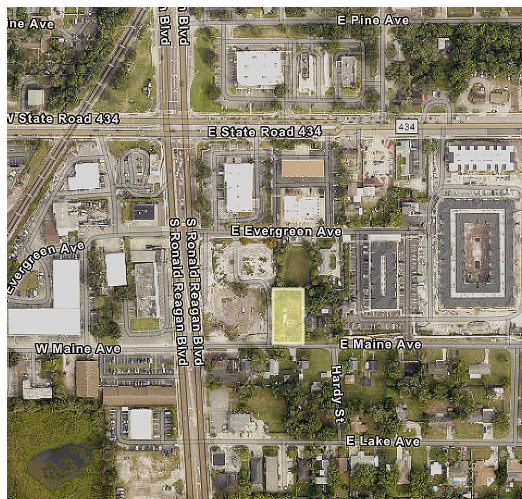
eXp Commercial, LLC, its direct and indirect parents and their subsidiaries (together, "We") obtained the information above from sources believed to be reliable, however, We have not verified its accuracy and make no guarantee, warranty or representation, expressed or implied, about such information. The information contained above is submitted subject to the possibility of errors, omissions, price changes, rental or other conditions, prior sale, lease or financing, or withdrawal without notice. Any projections, opinions, assumptions or estimates of the information contained above or provided in connection therewith, either expressed or implied, are for example only, and they may not represent current or future performance of the subject property. You, together with your tax and legal advisors, should conduct your own thorough investigation of the subject property and potential investment.



# Additional Photos

137 E Maine Ave, Longwood, FL 32750

FOR SALE



Marla Brown

855.452.0263 x375

marla.brown@expcommercial.com



eXp Commercial, LLC, its direct and indirect parents and their subsidiaries (together, "We") obtained the information above from sources believed to be reliable, however, We have not verified its accuracy and make no guarantee, warranty or representation, expressed or implied, about such information. The information contained above is submitted subject to the possibility of errors, omissions, price changes, rental or other conditions, prior sale, lease or financing, or withdrawal without notice. Any projections, opinions, assumptions or estimates of the information contained above or provided in connection therewith, either expressed or implied, are for example only, and they may not represent current or future performance of the subject property. You, together with your tax and legal advisors, should conduct your own thorough investigation of the subject property and potential investment.