

**FOR SALE  
OR  
LEASE**

**1875 E. LAKE MARY BLVD  
SANFORD, FL 32771**

**2 OFFICE/WAREHOUSE PROPERTIES  
TOTALING 34,682 SF**



**PROPERTY HIGHLIGHTS**

- **Bld. 1: 18,885 SF (Free Span) with Dock and Grade Access**
- **Bld. 2: 16,000 SF (Free Span) with Grade and Truck Well Access**
- **2.44 Acres Zoned Industrial with Rail Access**
- **22' Clear Height, 3 Phase 3000 Amp Service, & High Bay Lighting**
- **Owner Occupied and will lease back Bld. 1 if needed**
- **Flexible Landlord, will Modify for Qualified Tenant**
- **Close to Lake Mary Blvd, CR 427, HW 17-92, SR 434, 46, 417 and across the street from the Sanford Orlando Airport**
- **Lease Rate                      \$4.00 Modified Gross (Bld. 2 Only)**
- **Sales Price:                      \$1,500,000**
- **In-House SBA Financing Available (see broker for details)**

**C O N T A C T**

**Vincent F. Wolle, CCIM, SIOR**  
**407.448.1823 mobile**  
**VWolle@ResultsREPartners.com**

Results Real Estate Partners, LLC  
*Licensed Commercial Real Estate Brokers*  
108 Commerce Street, Suite 200  
Lake Mary, Florida 32746

407.647.0200 *main*  
407.647.0205 *fax*

[www.ResultsREPartners.com](http://www.ResultsREPartners.com)

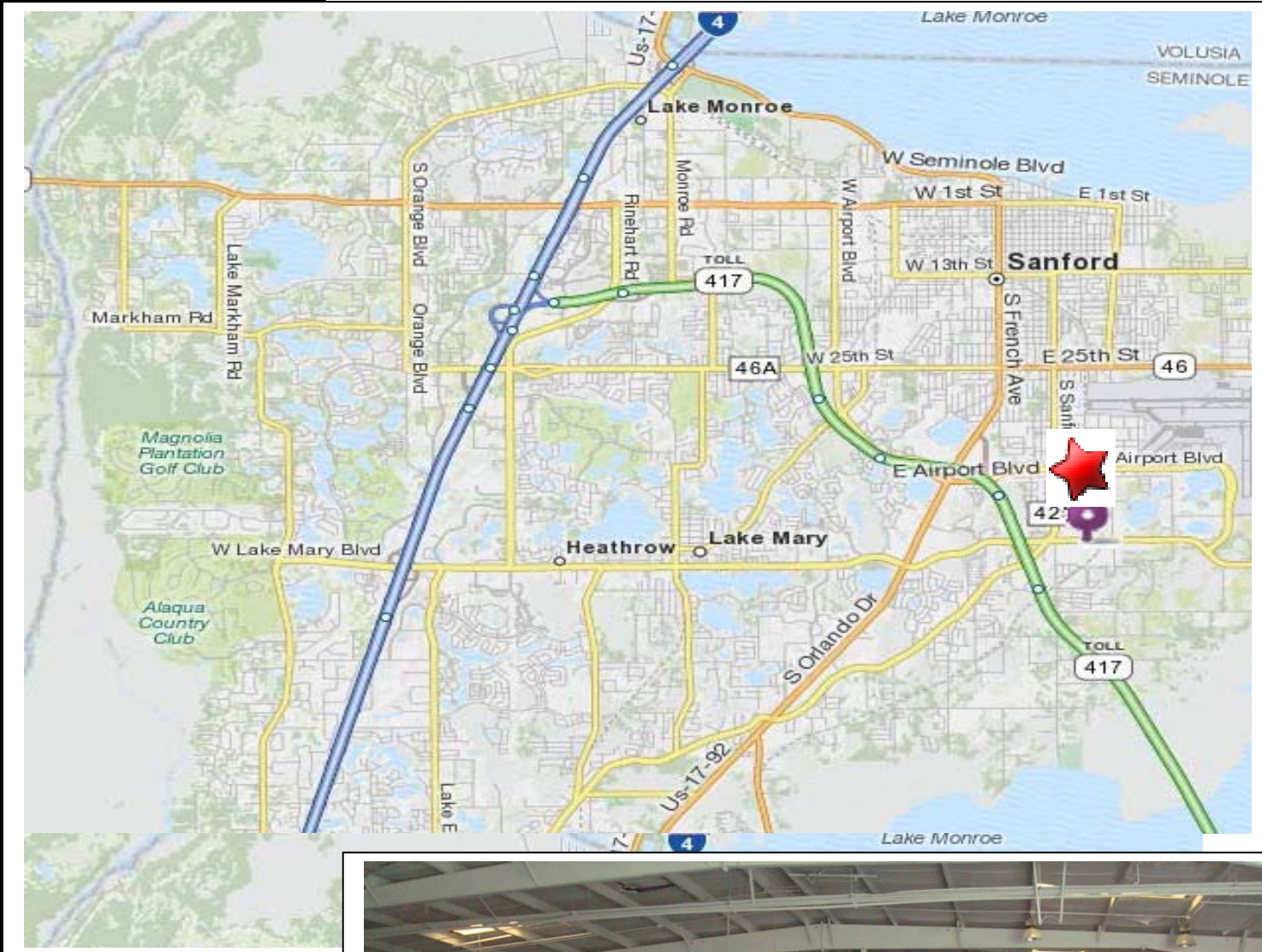
This information is from sources we deem reliable and is subject to prior sale, lease, withdrawal without notice, or change in prices, rates, or conditions. No representation is made as to the accuracy of any information furnished.



**FOR SALE  
OR  
LEASE**

# 1875 E. LAKE MARY BLVD SANFORD, FL 32771

**2 OFFICE/WAREHOUSE PROPERTIES  
TOTALING 34,682 SF**



## CONTACT

**Vincent F. Wolle, CCIM, SIOR**  
407.448.1823 *mobile*  
VWolle@ResultsREPartners.com

Results Real Estate Partners, LLC  
*Licensed Commercial Real Estate Brokers*  
108 Commerce Street, Suite 200  
Lake Mary, Florida 32746

407.647.0200 *main*  
407.647.0205 *fax*

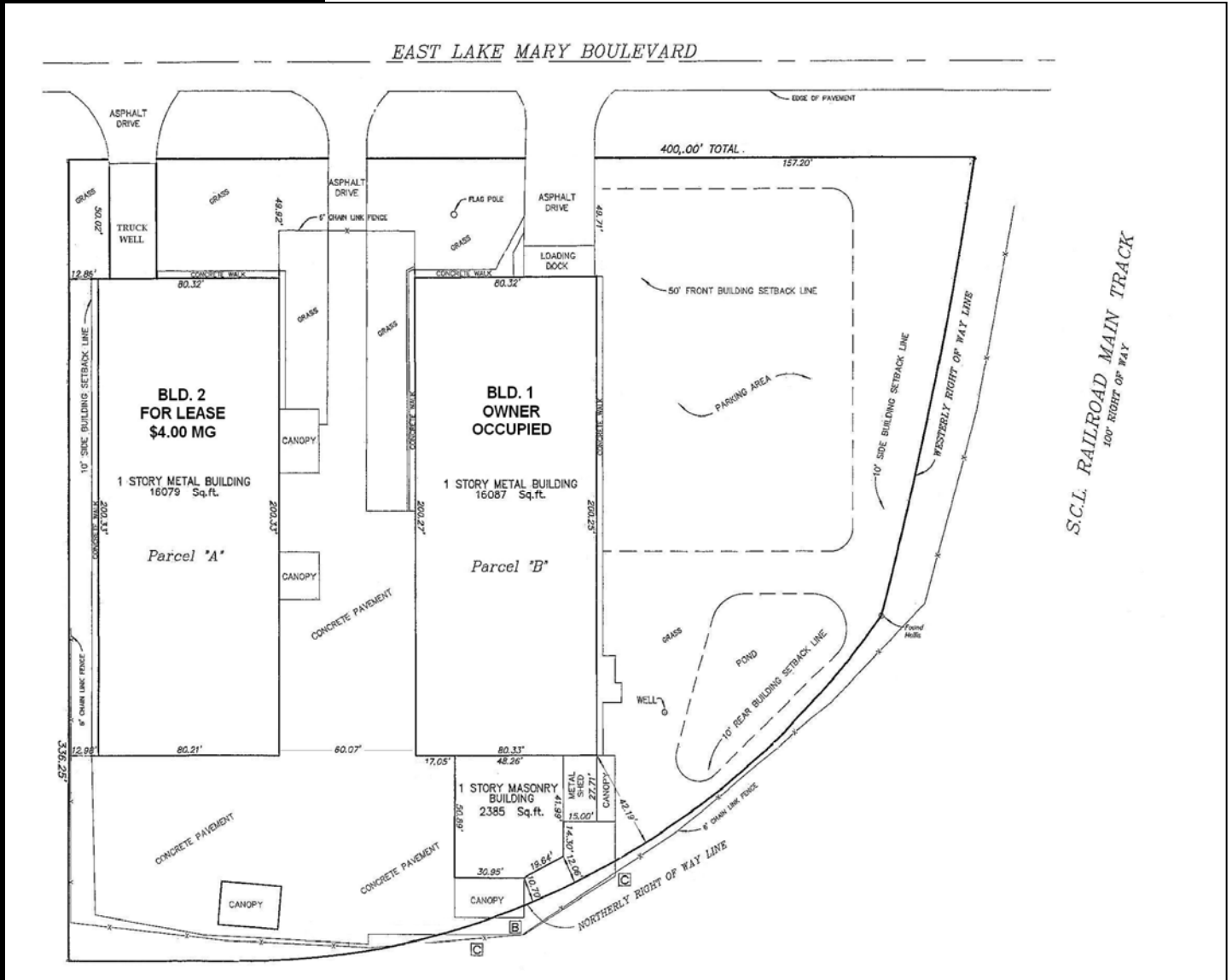
www.ResultsREPartners.com

This information is from sources we deem reliable and is subject to prior sale, lease, withdrawal without notice, or change in prices, rates, or conditions. No representation is made as to the accuracy of any information furnished.

**FOR SALE  
OR  
LEASE**

**1875 E. LAKE MARY BLVD  
SANFORD, FL 32771**

**2 OFFICE/WAREHOUSE PROPERTIES  
TOTALING 34,682 SF**



**CONTACT**

**Vincent F. Wolle, CCIM, SIOR**  
407.448.1823 mobile  
VWolle@ResultsREPartners.com

Results Real Estate Partners, LLC  
Licensed Commercial Real Estate Brokers  
108 Commerce Street, Suite 200  
Lake Mary, Florida 32746

407.647.0200 main  
407.647.0205 fax

www.ResultsREPartners.com



This information is from sources we deem reliable and is subject to prior sale, lease, withdrawal without notice, or change in prices, rates, or conditions. No representation is made as to the accuracy of any information furnished.