

I-4  
20 ± Minutes



# Downtown Historic Auburndale Corner Retail Space

123 Main St, Auburndale, Florida 33823

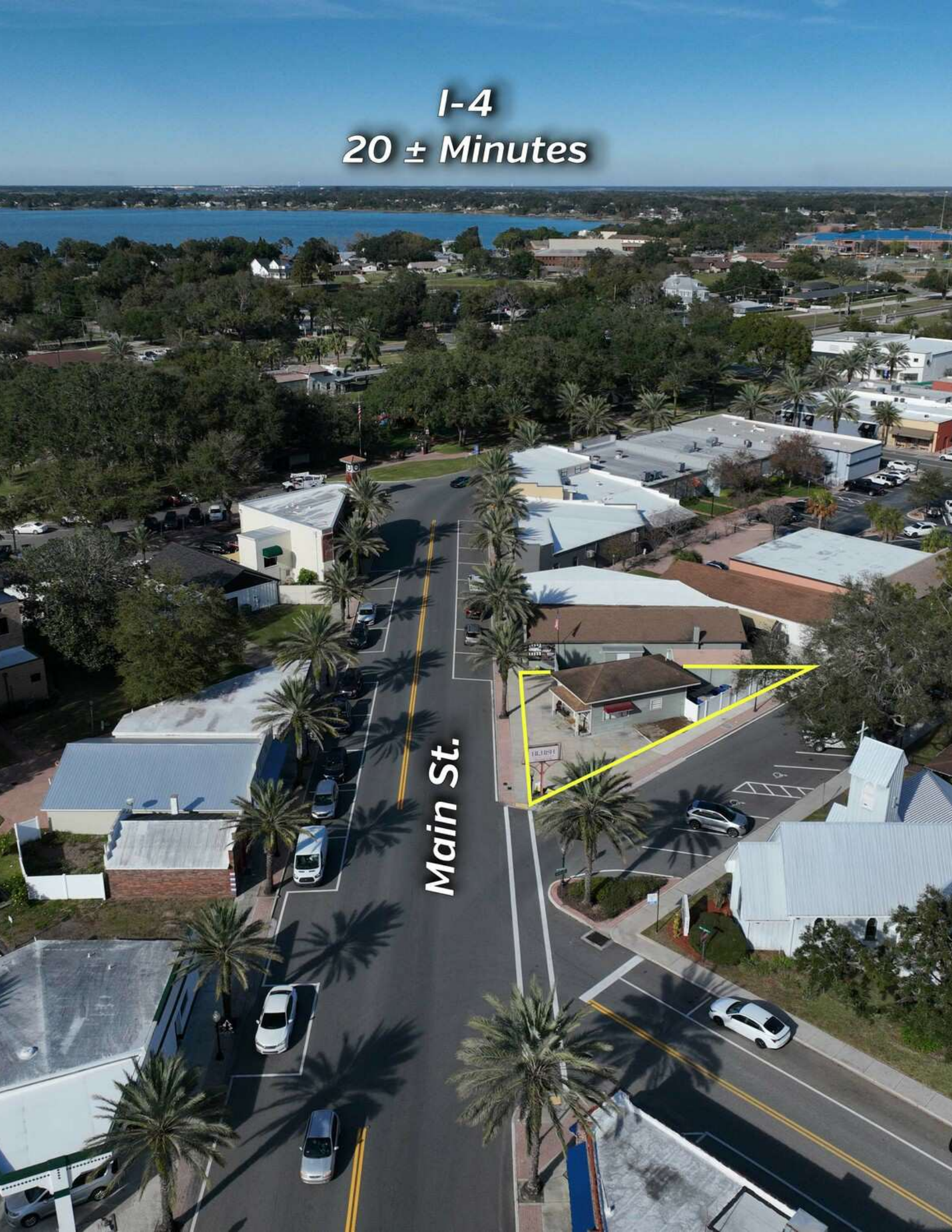
Craig Morby  
Senior Advisor  
863-581-0059  
[craig@saundersrealestate.com](mailto:craig@saundersrealestate.com)

Eric Ammon, CCIM  
Senior Advisor  
863-602-1001  
[eric@saundersrealestate.com](mailto:eric@saundersrealestate.com)



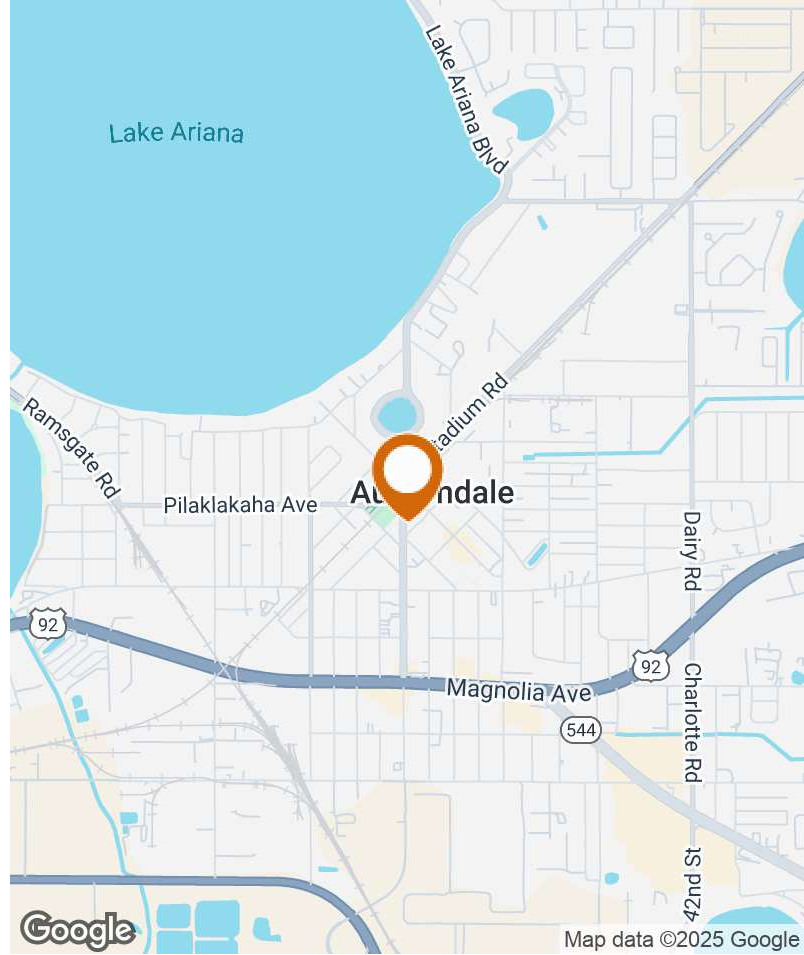
I-4  
20 ± Minutes

Main St.





## PROPERTY SUMMARY



## Offering Summary

<b>Sale Price:</b>	<b>\$299,900</b>
<b>Building Size:</b>	612 ± SF
<b>Lot Size:</b>	0.09 ± Acres
<b>Year Built:</b>	1930
<b>Renovated:</b>	2022
<b>Zoning:</b>	CBD - Central Business District
<b>APN:</b>	25-28-11-333000-000010
<b>Traffic Count:</b>	10,800 Cars/Day
<b>Road Frontage:</b>	90 ± FT (Main St.)

## Property Overview

Superb hard corner property in the heart of historic downtown Auburndale. What the building lacks in size, it makes up for with its tasteful and completely renovated interior. There is a personal service tenant, currently, on a month to month lease at \$1,200 per month.

The space itself is set up as a stylist salon, with new laminate flooring and modern counters. It features a waiting area, stylist chairs, a separate stylist space, and one bathroom.

Downtown Auburndale and the City of Auburndale itself are in a growth mode, both from a commercial and residential standpoint. Its location within Polk County, one of the fastest growing counties in the nation. The county has been beneficial to several large companies, including Amazon establishing major footprints in the area.

The property is in proximity to I-4 and also to other larger cities including Winter Haven, Lakeland, and Davenport. It's only 49 ± miles from downtown Tampa and 56 ± miles to downtown Orlando.

## COMPLETE HIGHLIGHTS



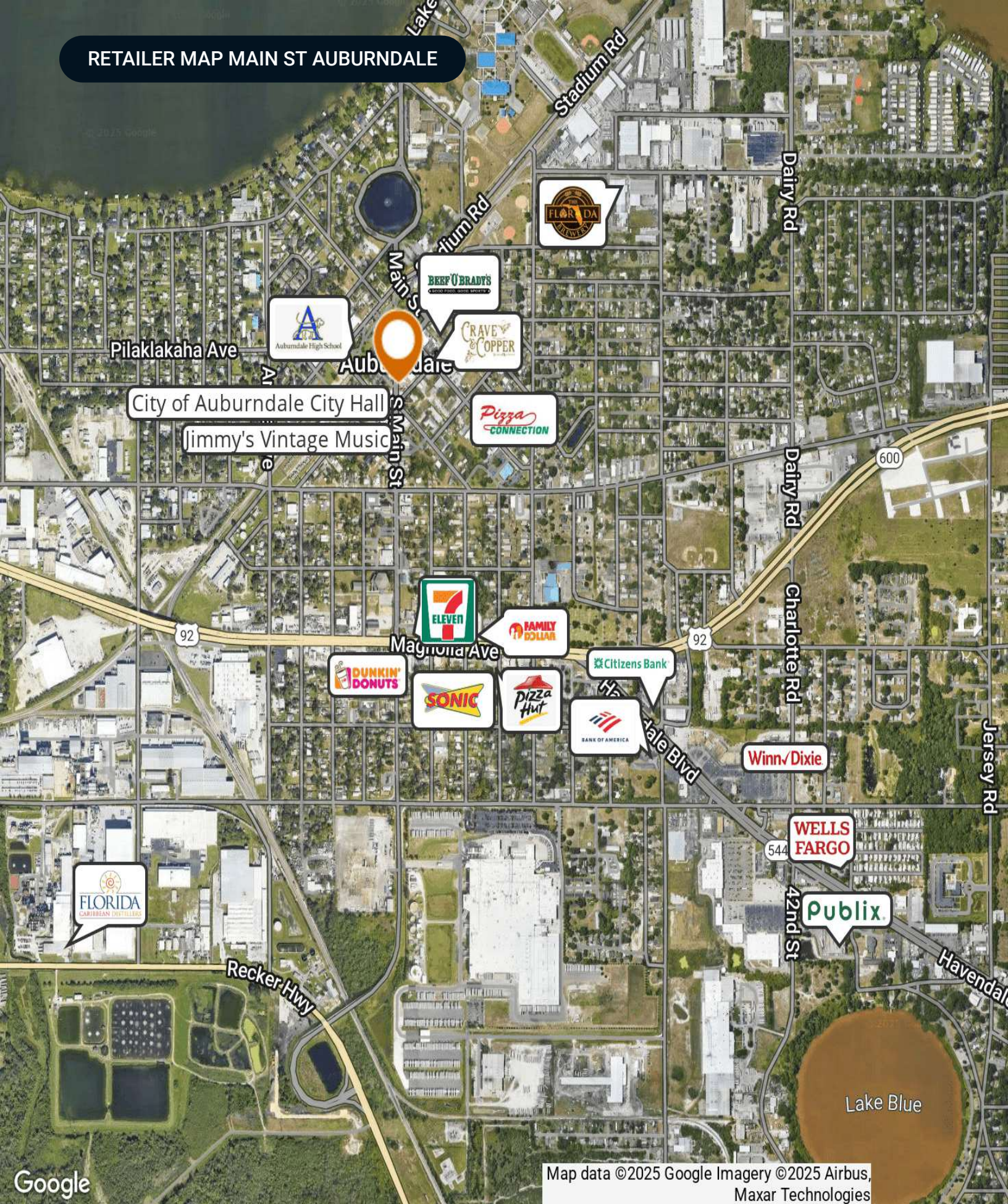
## Property Highlights

- Historic Downtown Auburndale - Free Standing Building Corner Property
- 612 SF renovated property.
- Owner user or investment opportunity.
- Extensive work on the inside - it's a fantastic, well appointed space.
- Current lease is month to month at \$1,200 per month.
- Traditional reception and waiting area, two stylist areas , sink and cabinet area, plus one bathroom.
- City of Auburndale handles water, sewer and trash.
- 13 x 24 Smithbuilt shed also included with the deal. This shed has a mini split unit - -currently used for storage.
- Survey available. Lease available for review.
- Property Taxes - \$1,304.00





# RETAILER MAP MAIN ST AUBURNDALE

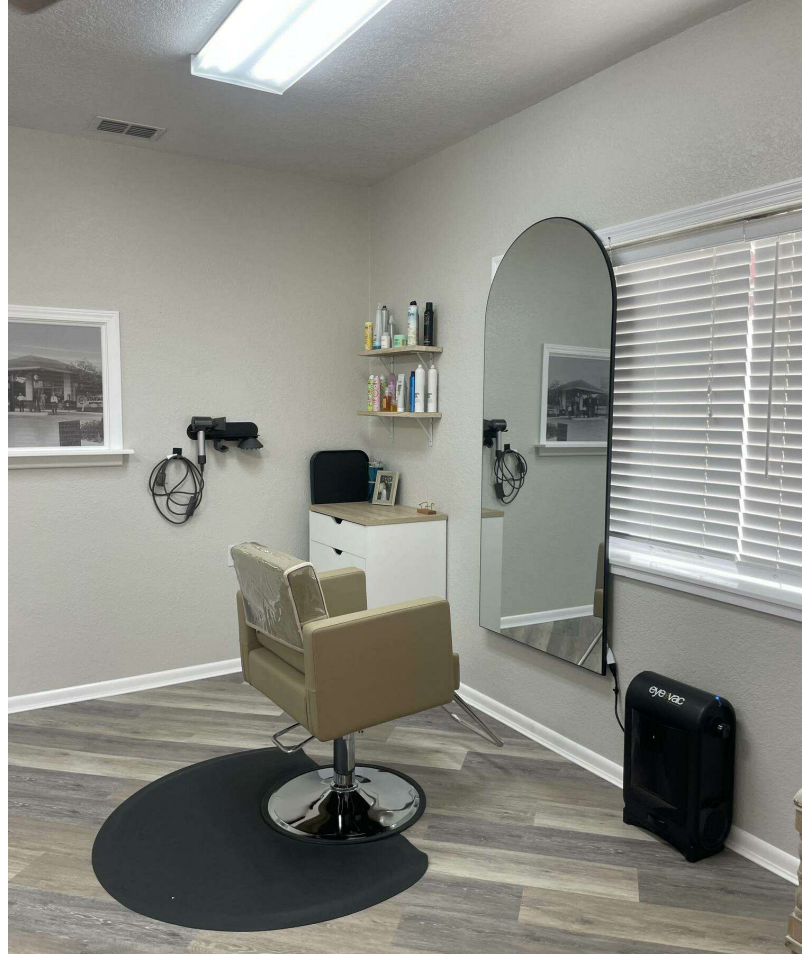








ADDITIONAL PHOTOS

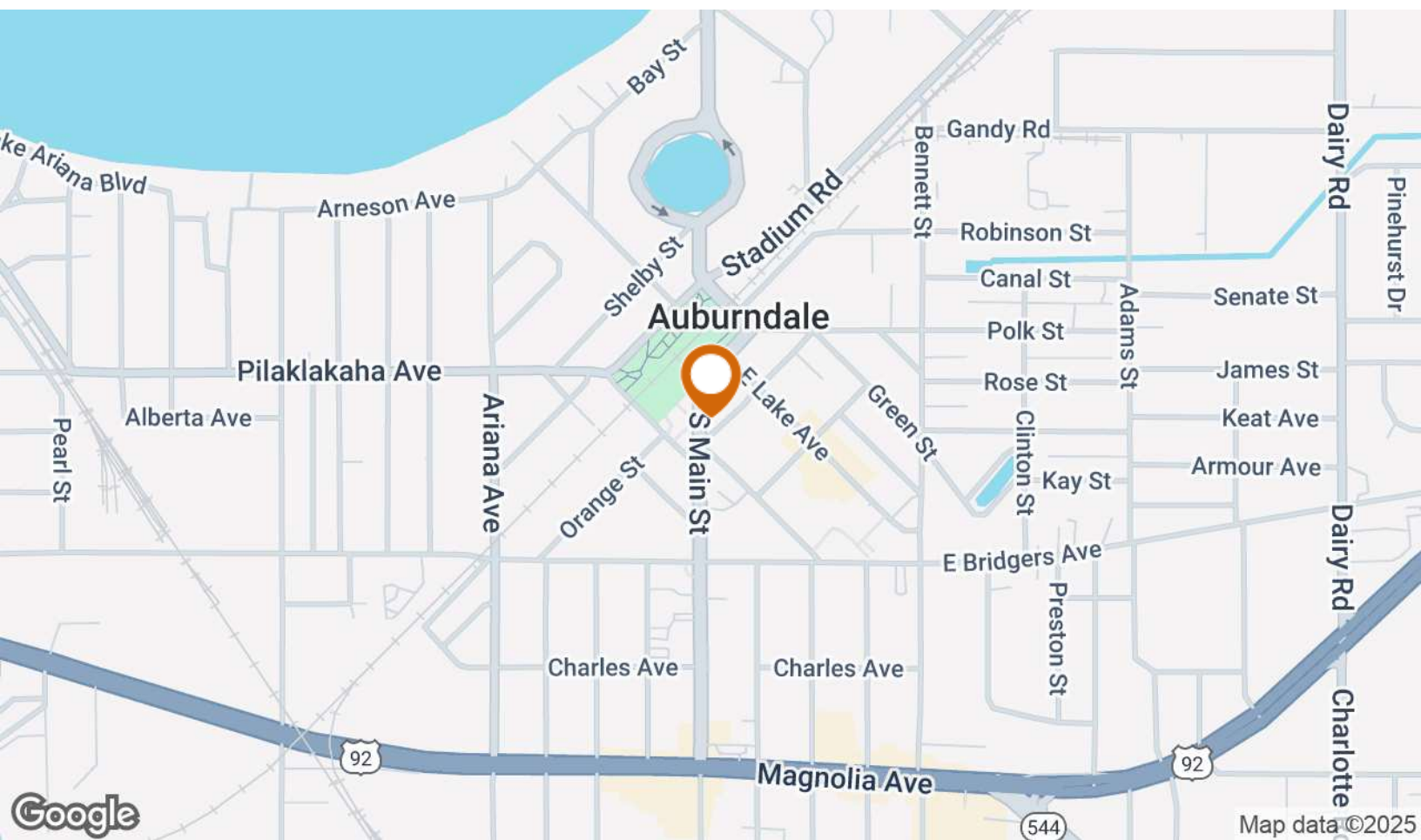
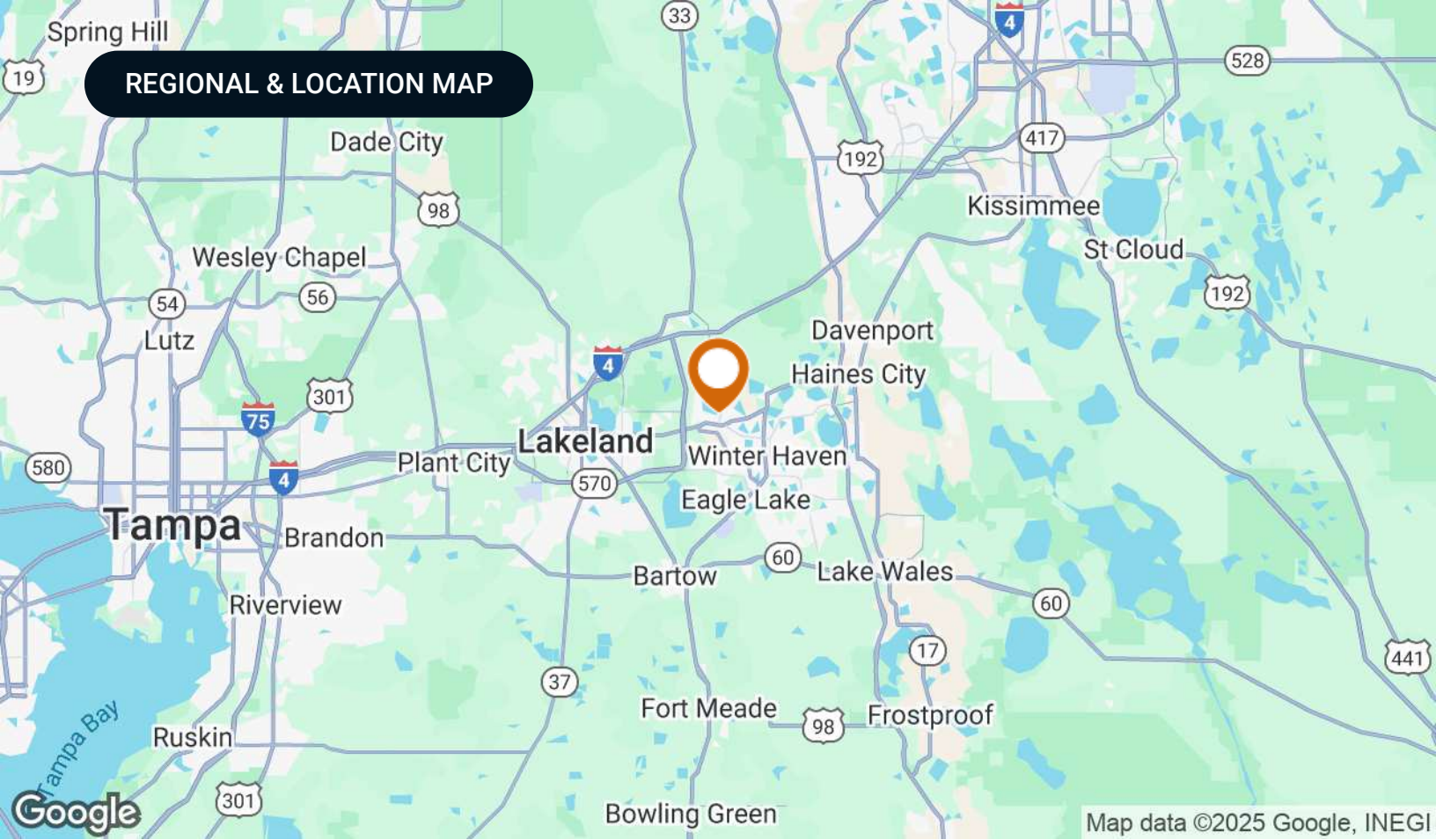




ADDITIONAL PHOTOS

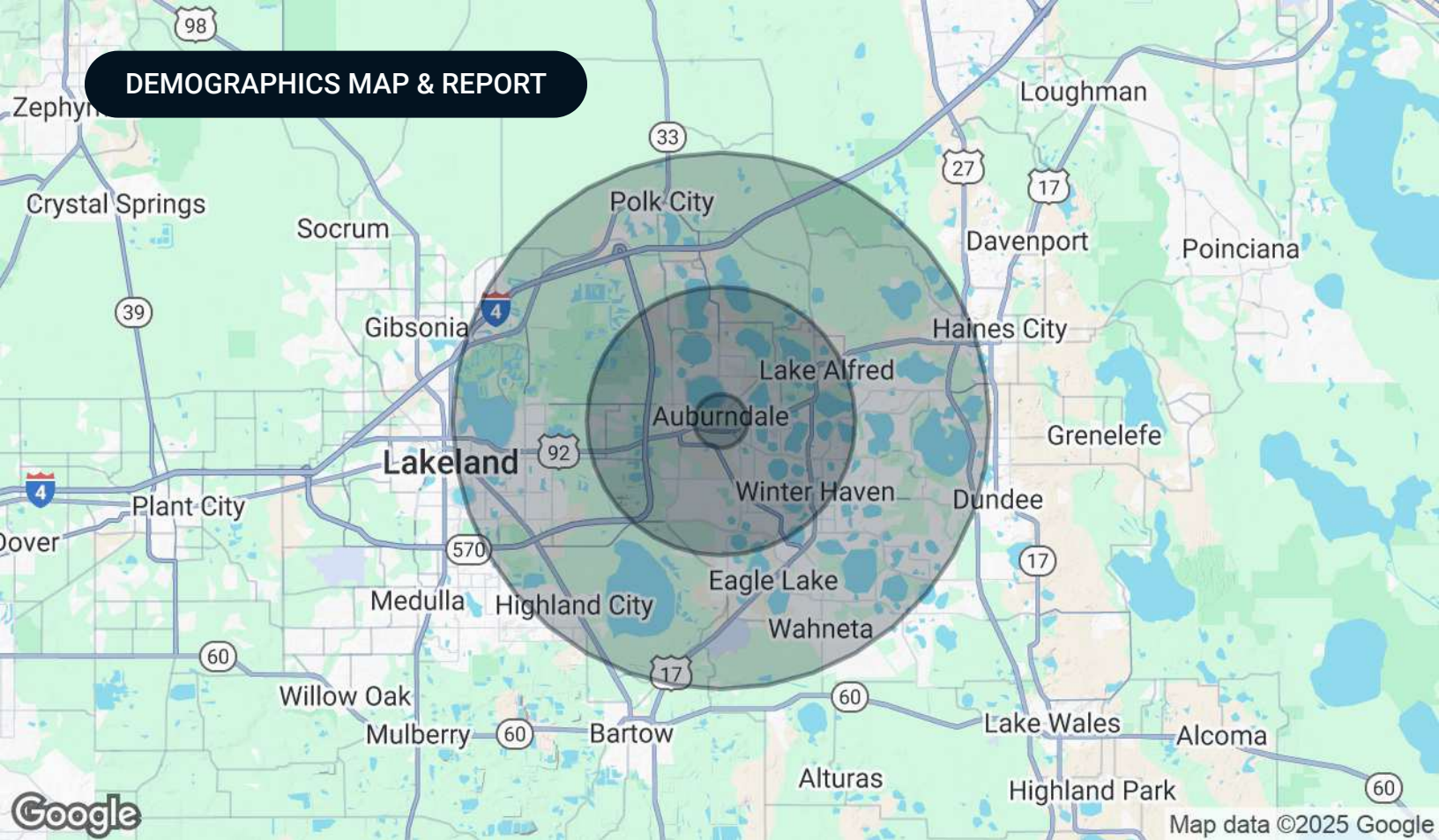








## DEMOGRAPHICS MAP & REPORT



### Population

	1 Mile	5 Miles	10 Miles
Total Population	5,587	80,304	237,665
Average Age	34	41.7	41.7
Average Age (Male)	32.2	40	40.3
Average Age (Female)	38.8	43	43

### Households & Income

	1 Mile	5 Miles	10 Miles
Total Households	2,011	32,806	100,822
# of Persons per HH	2.8	2.4	2.4
Average HH Income	\$48,076	\$52,609	\$54,938
Average House Value	\$107,861	\$129,264	\$143,561

2020 American Community Survey (ACS)





### Craig Morby

Senior Advisor

[craig@saundersrealestate.com](mailto:craig@saundersrealestate.com)

Direct: **877-518-5263 x442** | Cell: **863-581-0059**

## Professional Background

Craig Morby is a Senior Advisor at Saunders Real Estate.

He has been licensed in real estate since 2006 and has been handling commercial real estate for the past 15 years. Craig's core belief is that anything can be accomplished with distinct customer service. It is this principle that drives him as he seeks to affirm loyalty and trust in his customer base.

Considered a generalist, Craig has handled every asset class of commercial real estate including multi-family, office, retail, industrial, land, and leasing. He is responsible for millions of dollars in sales, representing both buyers and sellers.

Craig is very involved in the Lakeland community, currently serving on the Board of Directors for the Lakeland Chamber of Commerce and the Lakeland Association of Realtors. He is also a graduate of Leadership Lakeland Class 37.

Craig Morby was born in London, England, raised in Toronto, Canada, and has been a Lakeland resident since 1995. His previous experience as a National Account Manager at American Express Toronto and as a small business owner in Lakeland, FL has given Craig a unique range of experience. He resides in Lakeland with his wife Vicki, their two dogs, and two cats. His daughter, Sabrina lives in Jacksonville Beach, Florida.

## Memberships

- Board of Directors - Lakeland Chamber of Commerce
- Board of Directors - Lakeland Association of Realtors
- Board Member - Harrison School for the Arts, Parent Advisory Board

Saunders Real Estate  
1723 Bartow Road  
Lakeland, FL 33801  
863.648.1528





### Eric Ammon, CCIM

Senior Advisor

[eric@saundersrealestate.com](mailto:eric@saundersrealestate.com)

Direct: **877-518-5263 x353** | Cell: **863-602-1001**

## Professional Background

Eric Ammon, CCIM is a Senior Advisor at Saunders Real Estate.

Eric has worked in commercial real estate for over 30 years and is a licensed real estate broker in Florida. In his career he has managed, acquired and sold in excess of \$1.2 Billion worth of investment grade real estate across all asset classes including multi-family, hospitality, marina, high-rise office, industrial, retail, parking garages, and land in all of its forms.

He has directly completed in excess of \$170M in multi-family acquisitions, \$335M in overall dispositions, brokered the sale of over \$195M in apartment sales throughout Florida, and managed and leased all types and classes of properties across the United States. Eric obtained a Bachelor of Arts degree in Political Science from the University of Cincinnati. He also holds the Certified Commercial Investment Member (CCIM) designation. Eric resides in Lakeland, FL with his wife, Patty and their two children.

Eric specializes in:

- General Commercial Real Estate

## Memberships

Certified Commercial Investment Member

Saunders Real Estate  
1723 Bartow Road  
Lakeland, FL 33801  
863.648.1528





## Serving the Southeast

At Saunders Real Estate, we deliver full-service real estate solutions across the Southeast, built on more than 30 years of trusted experience. Our dedicated teams—experts in both land and commercial real estate—offer tailored guidance backed by deep regional insight and a proven track record. We believe that successful outcomes start with strong relationships built on trust and a shared commitment to your goals.



877-518-5263 • [info@saundersrealestate.com](mailto:info@saundersrealestate.com)