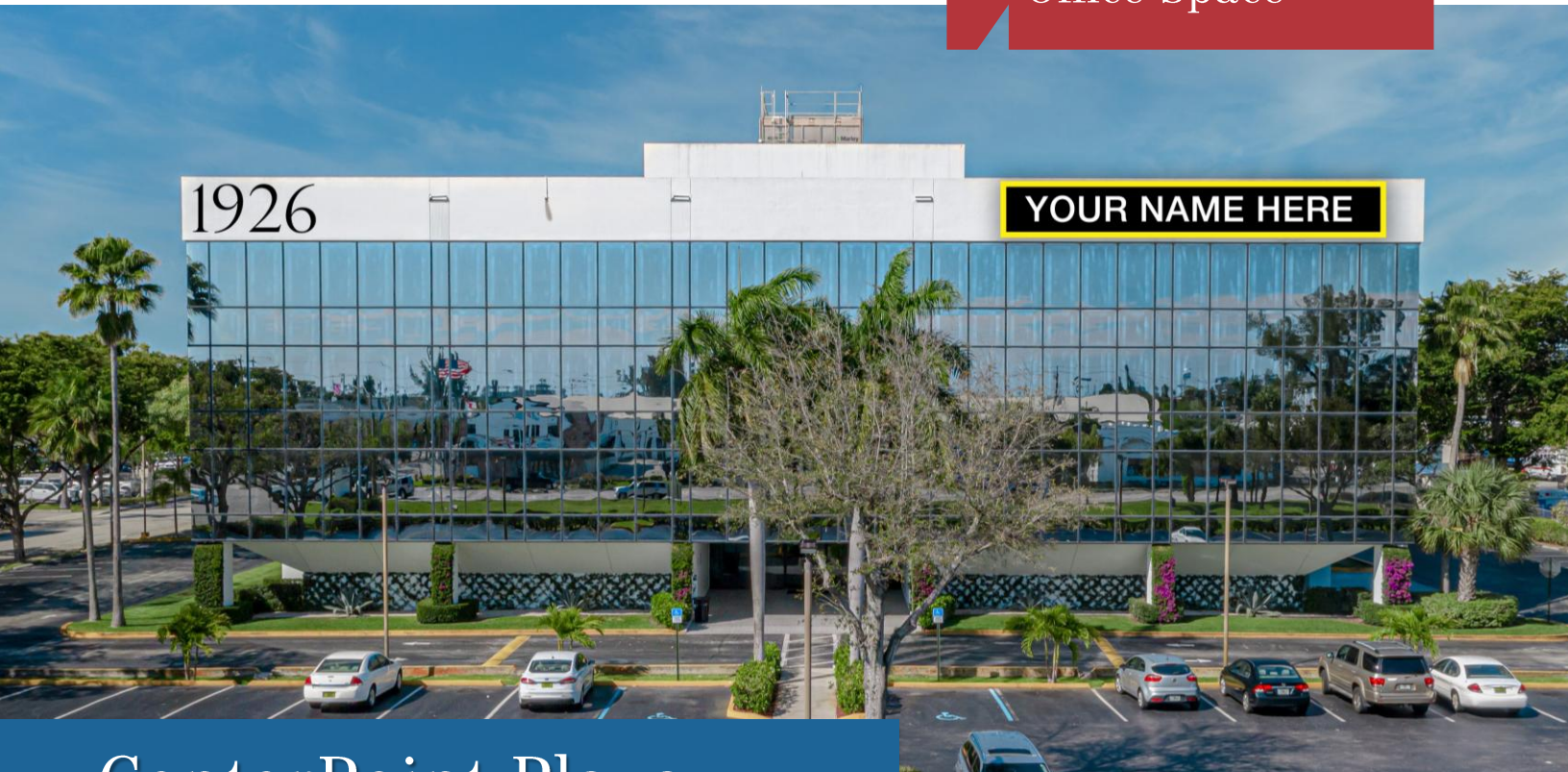


For Lease
±7,314-12,017 SF
Office Space



CenterPoint Plaza

1926 10th Avenue North | Lake Worth, FL 33461

HQ SPACE WITH SIGNAGE!

Property Features

- Prime Lake Worth office space for lease at 10th Avenue North, with immediate I-95 access
- Four-story professional office building with well-kept landscaping, abundant parking and professional on-site property management
- Exceptional value and visibility in a central Palm Beach County location
- Well-positioned near high-traffic retailers and residential neighborhoods

Key Features:



**IMMEDIATE
OCCUPANCY**



**Prime, central location,
adjacent to I-95**



**15-minutes to Palm Beach
International Airport**

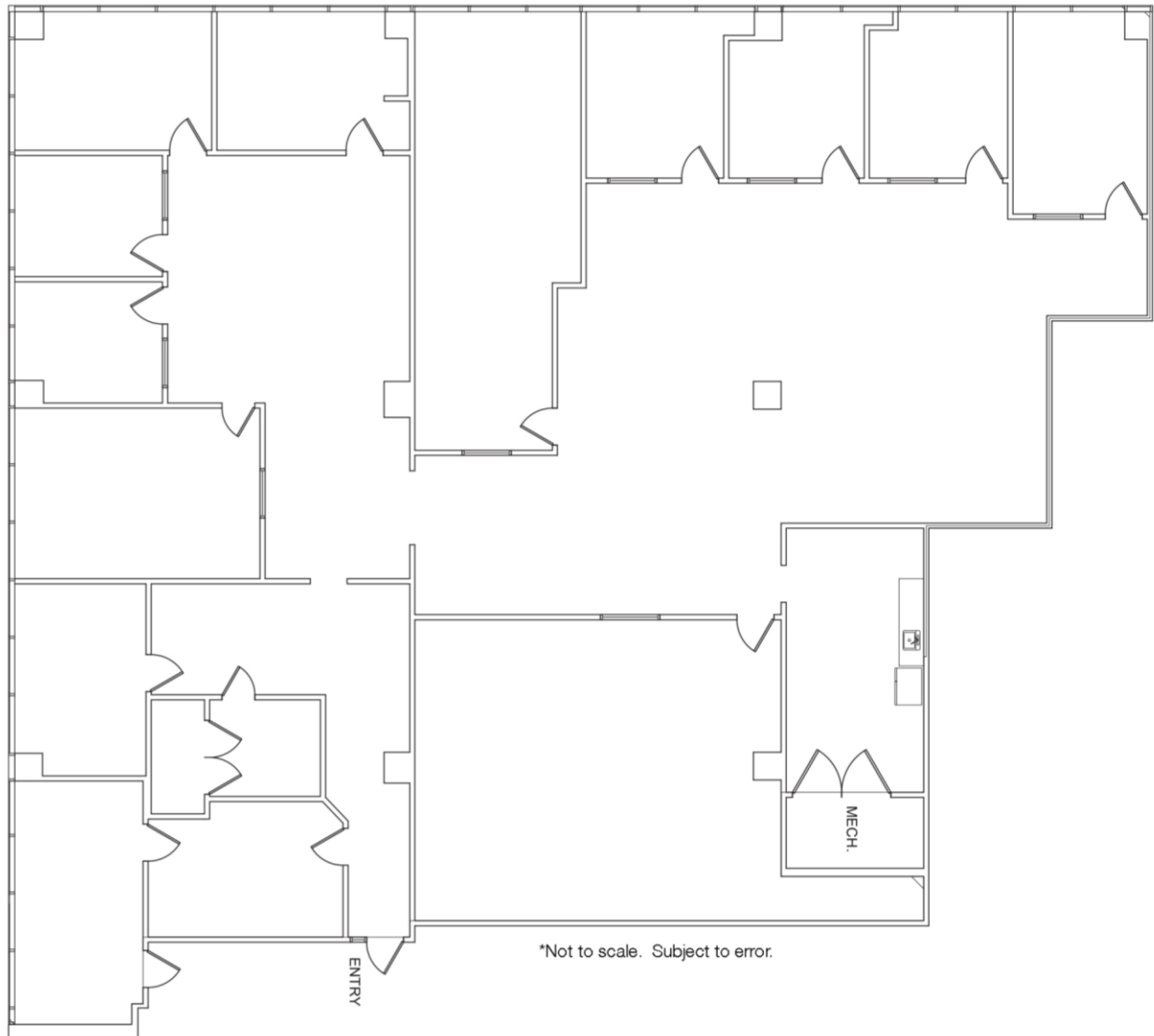
For More Information:

Patrick Almand, Associate
443 370 8665 | palmand@mhcreal.com

Jason Sundook, SIOR
Principal | jsundook@mhcreal.com



FOR LEASE: CENTREPOINT PLAZA
Move-In Ready Office Space Near I-95



Suite 201 ±7,314 SF

- Spacious layout
- Private offices
- Open work area
- Conference rooms
- Kitchen/breakroom

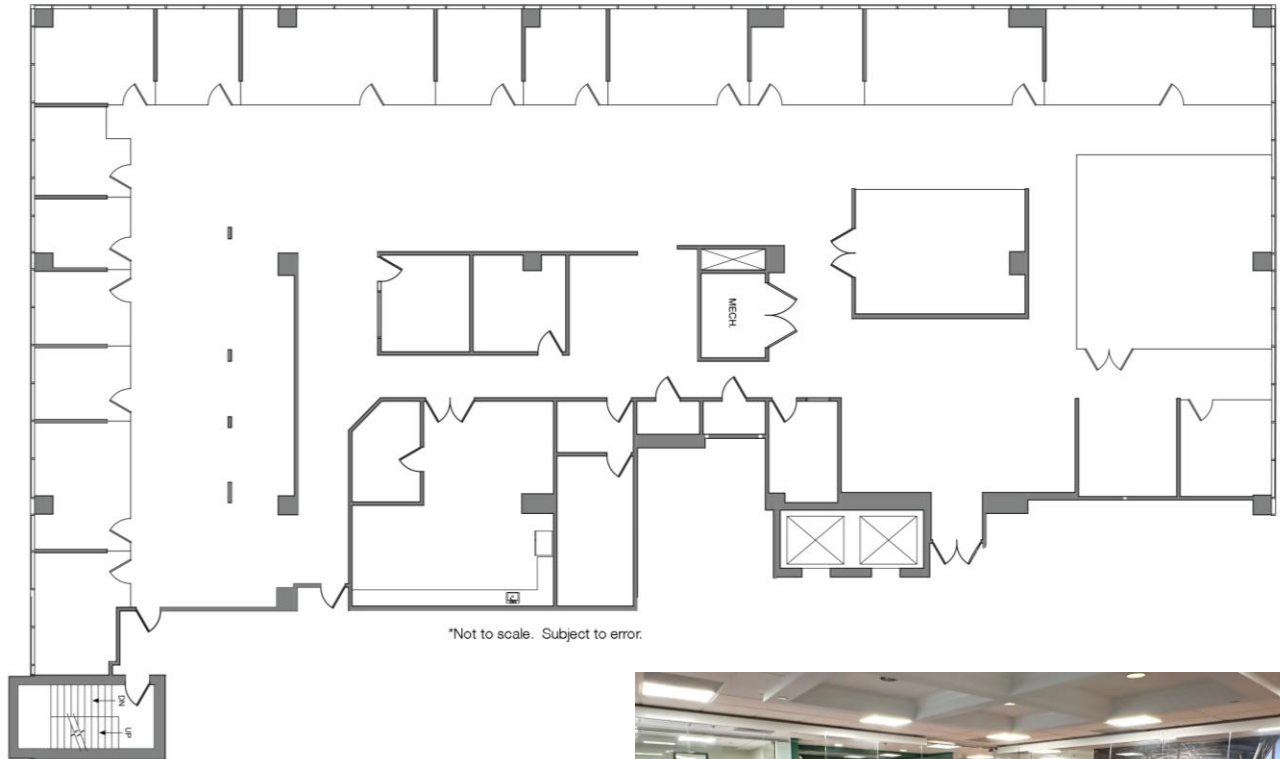
For More Information:

Jason Sundook, SIOR & Patrick Almand

561 471 8000 | www.mhcreal.com

FOR LEASE: CENTREPOINT PLAZA

Best Corporate HQ Value | Ready When You Are



Suite 300 ±12,017 SF

Beautifully finished and sprawling office space.

- Double-door entry off elevator lobby, near restrooms
- Glass-walled conference room and perimeter offices
- Flexible, open workspace
- Large breakroom with full kitchen
- High-end finishes including wood floors and glass accents
- Building signage available for qualified tenants



CALL TODAY

 **561 471 8000**

Patrick Almand, Associate
443 370 8665 | palmand@mhcreal.com

Jason Sundook, SIOR
Principal | jsundook@mhcreal.com