

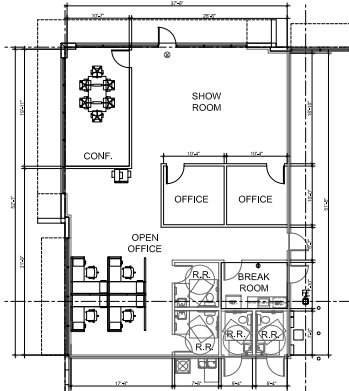
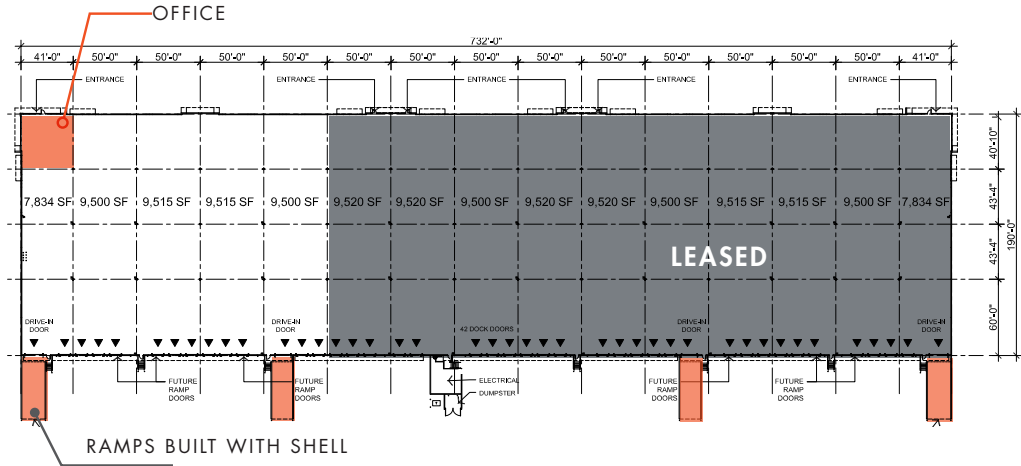
CREWS COMMERCE CENTER

BUILDINGS 1010-1021

30,634 - 45,865 SF AVAILABLE
FOR LEASE IN SOUTH ORLANDO

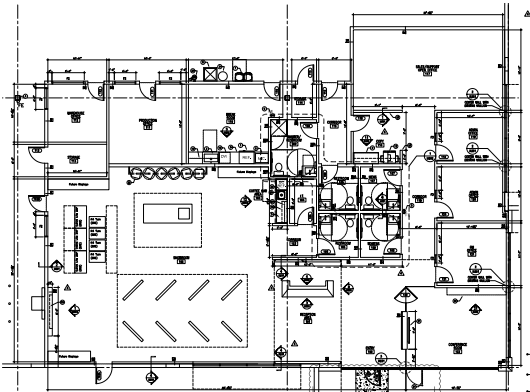
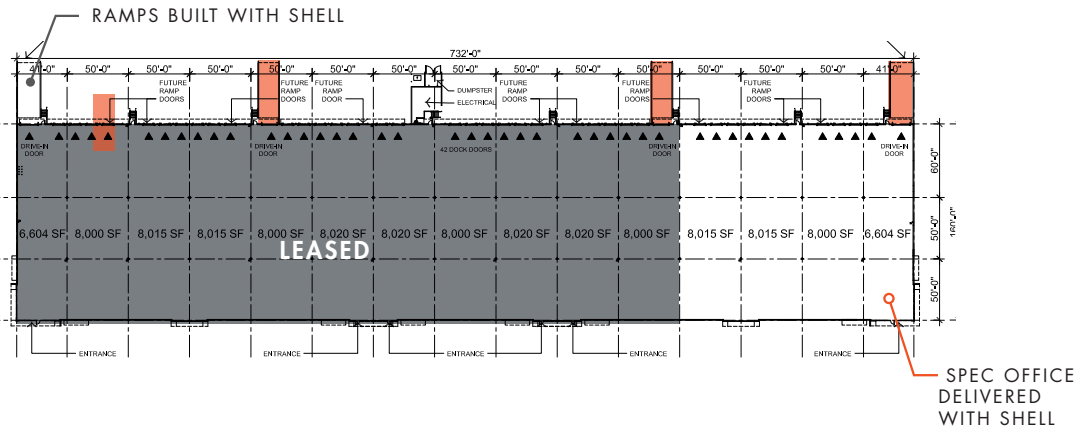
BUILDING 1020 (500)

- TOTAL: 45,865 SF
- DIMENSIONS: 190' x 241'
- OFFICE: 2,061 SF
- CLEAR: 30'6"
- COLUMNS: 50' x 50' typical
- DOORS: 12
- RAMPS: 2
- COURT DEPTH: 180'



BUILDING 1010 (600)

- TOTAL: 30,634
- DIMENSIONS: 160' x 191'
- OFFICE: 4,866
- CLEAR: 28'
- COLUMNS: 50' x 50' typical
- DOORS: 10
- RAMP: 1
- COURT DEPTH: 180'



LANDSTREET RD

SR 528 - BEACHLINE EXPRESSWAY

FLORIDA TURNPIKE

CONSULATE DR

SITE ACCESS

FRONTAGE & USABILITY

**FROM YOUR TRUCK
COURT TO THE
FLORIDA TURNPIKE
IN ONE MINUTE**

TAMPA 1.5 HOURS
JACKSONVILLE 2 HOURS
MIAMI 3.5 HOURS
ATLANTA 6 HOURS

DIRECT ORANGE
BLOSSOM TRAIL
ACCESS

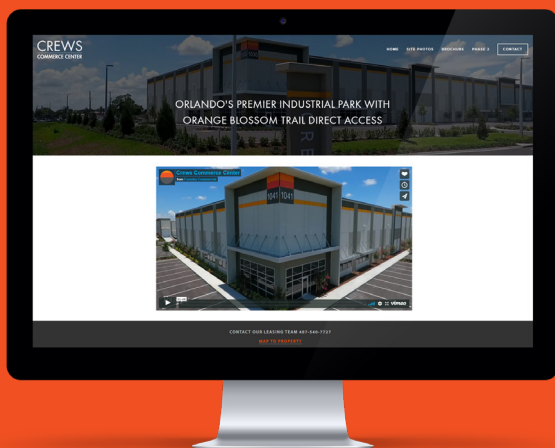
ORANGE BLOSSOM TRAIL (SR 441)



TWO TAFT VINELAND
ACCESS POINTS

TAFT VINELAND RD

CREWS COMMERCE CENTER



Find updated photos, aerial videos of the
site, and more:

FOUNDRYCOMMERCIAL.COM

TAKE A TOUR TODAY:

JUSTIN RUBY

Leasing | 407.865.0311

Justin.Ruby@foundrycommercial.com

JOEY WOODMAN

Leasing | 407.748.5888

Joey.Woodman@foundrycommercial.com

TRAVIS HAMMOND

Leasing | 407.401.1707

Travis.Hammond@foundrycommercial.com

A DEVELOPMENT BY:



FOUNDRY COMMERCIAL

420 S Orange Ave, Suite 400

Orlando, FL 32801

Although the information contained herein was provided by sources believed to be reliable, Foundry Commercial makes no representation, expressed or implied, as to its accuracy and said information is subject to errors, omissions or changes.