

FOR LEASE

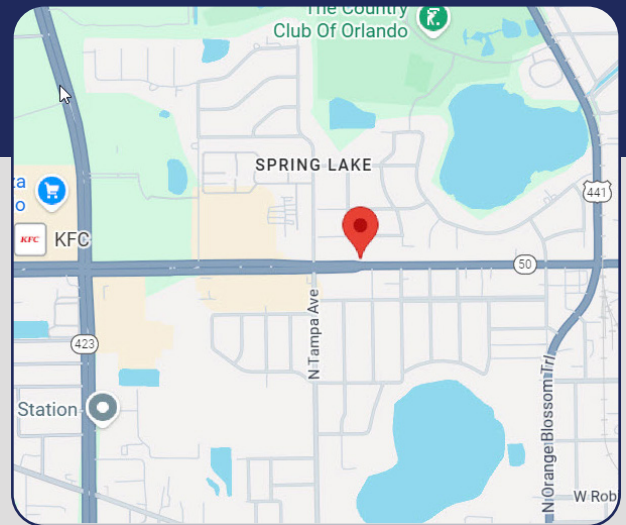


OFFICE SPACE

1805 W Colonial Drive, Orlando, FL 32804

3,616 SF IN SUITE A
754 SF IN SUITE B-2

- > Suite A has 10'+ ceilings, new paint, and is ready for tenant approved flooring
- > Suite B-2 is 2-story, has new flooring and paint, and is move-in ready
- > Both suites have private direct entry, private restrooms, 24-hour access, and dedicated air-conditioning
- > Great access on Colonial Drive as well as Country Lane
- > **SUITE A - \$6,500.00/month**
- > **SUITE B-2 - \$1,400.00/month**



Bill Bywater, CCIM

D 407.206.5736

O 407.206.7300

bill@bywater.com

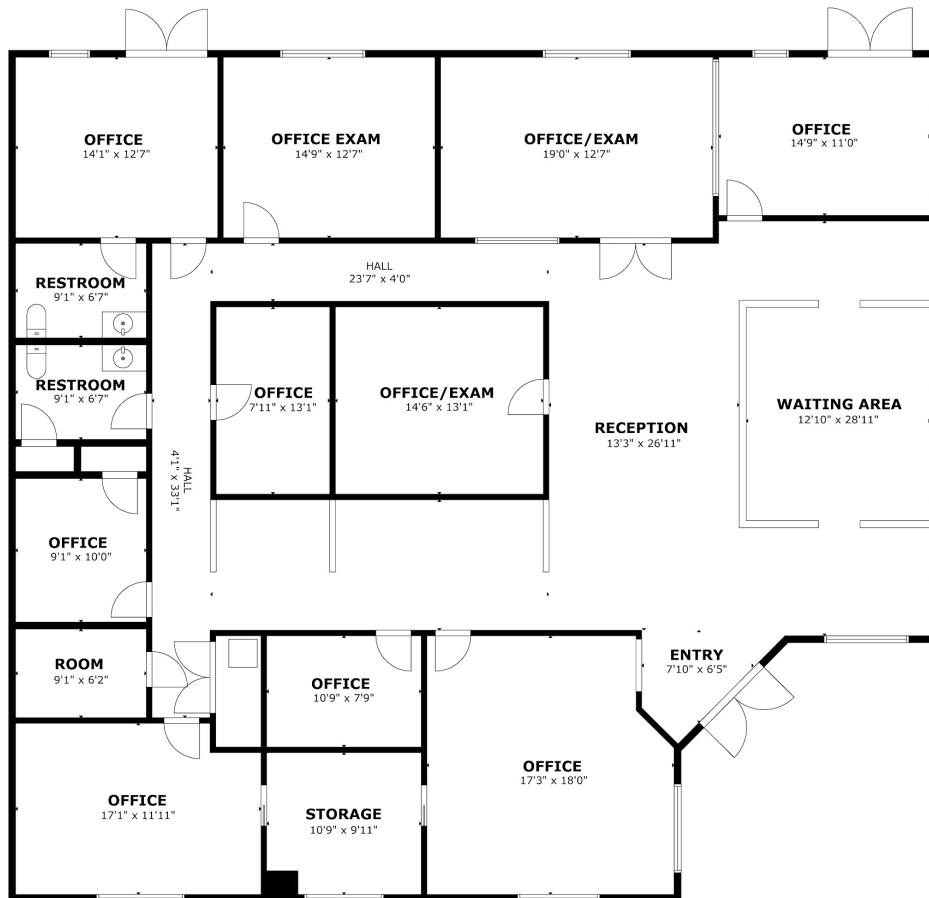


1209 Edgewater Drive
Suite 100
Orlando, FL 32804
407.206.7300 Main
www.bywater.com

OFFICE SPACE

1805 W Colonial Drive, Orlando, FL 32804

SUITE A - 3,616 SF



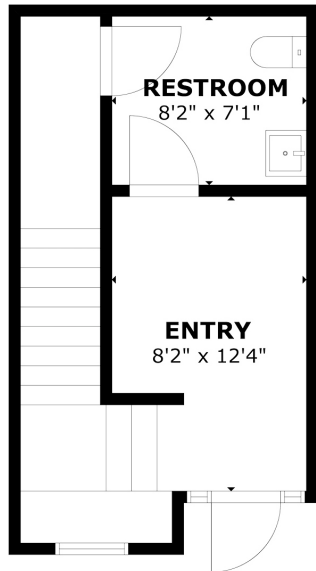
1209 Edgewater Drive, Suite 100 | Orlando, FL 32804 | 407.206.7300 | www.bywater.com

The information contained herein was obtained from sources deemed reliable and is assumed to be correct. It is not guaranteed by The Bywater Company.

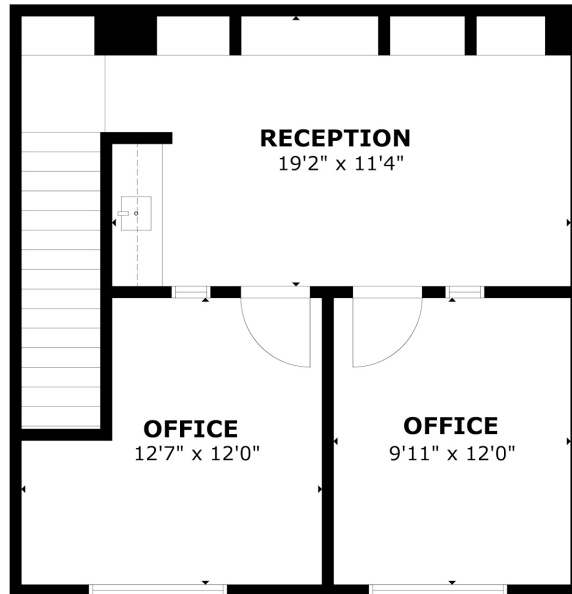
OFFICE SPACE

1805 W Colonial Drive, Orlando, FL 32804

SUITE B-2 - 754 SF



1ST FLOOR



2ND FLOOR



1209 Edgewater Drive, Suite 100 | Orlando, FL 32804 | 407.206.7300 | www.bywater.com

The information contained herein was obtained from sources deemed reliable and is assumed to be correct. It is not guaranteed by The Bywater Company.