

FOR SALE
\$7,595,000

±56,244 SF Industrial Warehouse | 3601 SE Dixie Hwy, Stuart, FL 34997

WITHAM AIRFIELD

St. Lucie River



Presented By:

NAI Southcoast

Douglas Legler

Principal | Broker Associate
+1 772 405 7778
douglas@naisouthcoast.com

Casey Combs

Broker Associate
+1 772 285 8769
ccombs@naisouthcoast.com

NAI Southcoast | 100 SW Albany Avenue, 2nd Floor, Stuart, FL 34994 | O: 772.286.6292 | naisouthcoast.com



Property Features

Building Type: Industrial/Warehouse

Building Size: 56,244 SF

Acres: 2.68 Acres

Year Built: 1975

Sale Price: \$7,595,000

Daily Traffic: 14,000 AADT on NW Dixie Highway

Loading: Dock High Doors: (2) 6'x8'
Grade Level Doors: (2) 16'8"x16'8" and (1) 12'x14'

Property Overview

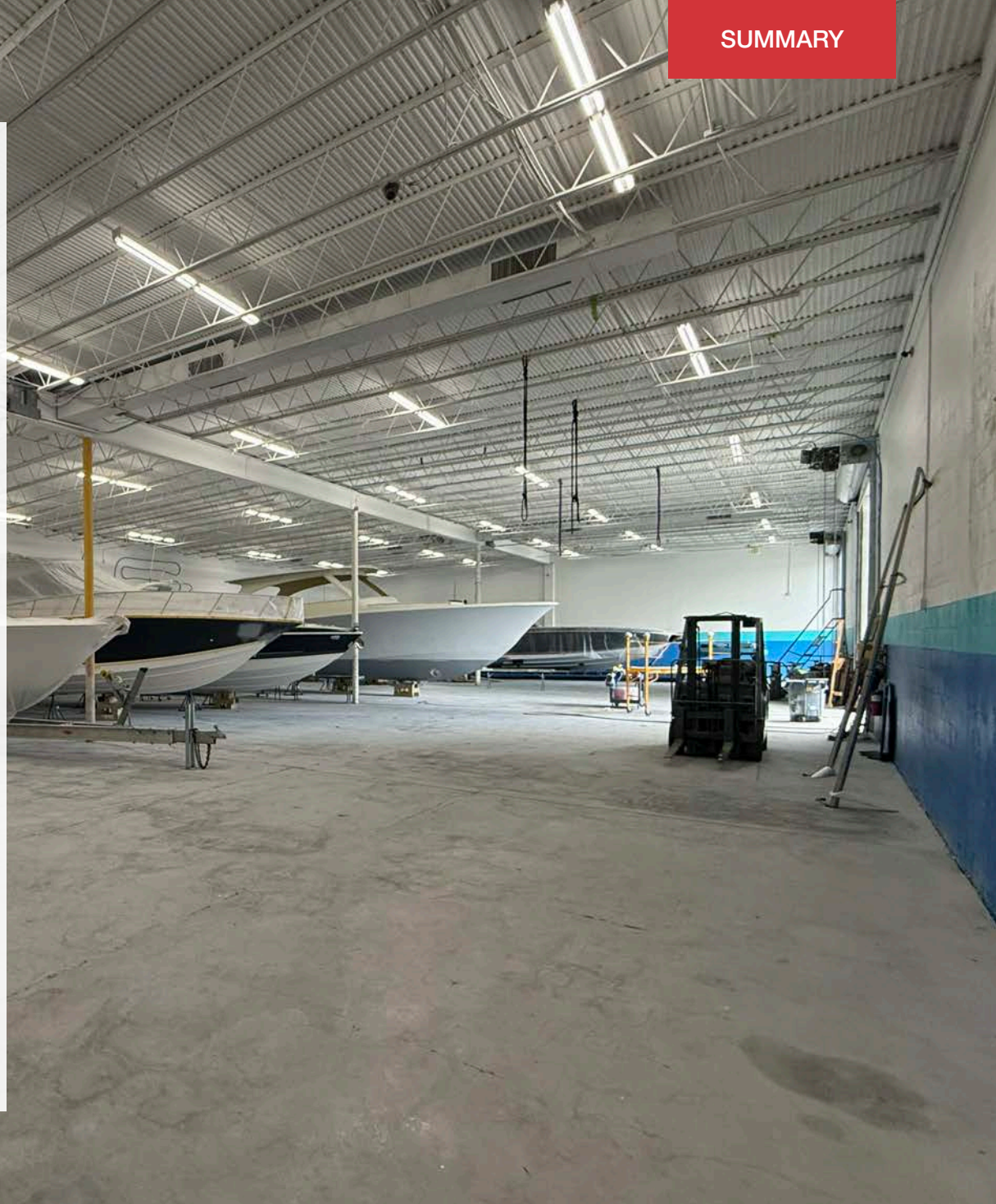
This concrete block industrial building is functional with plenty of bulk space, dock-high and grade level loading bays plus fenced yard space.

52 foot wide and 22 foot deep covered truck well with 3 loading stalls allowing cover from the weather while loading.

All space is 100% air-conditioned with LED lighting. The property has street access on three sides for efficient use. Additional roll-up doors and parking may be added.

Near a plentiful labor and a skilled workforce.

Easy access to US Hwy 1, I-95, and the Florida Turnpike makes this property ideal to serve the Treasure Coast and beyond.



PROPERTY
BOUNDARY

SE JEFFERSON ST

SE DIXIE HWY

14,000 AADT

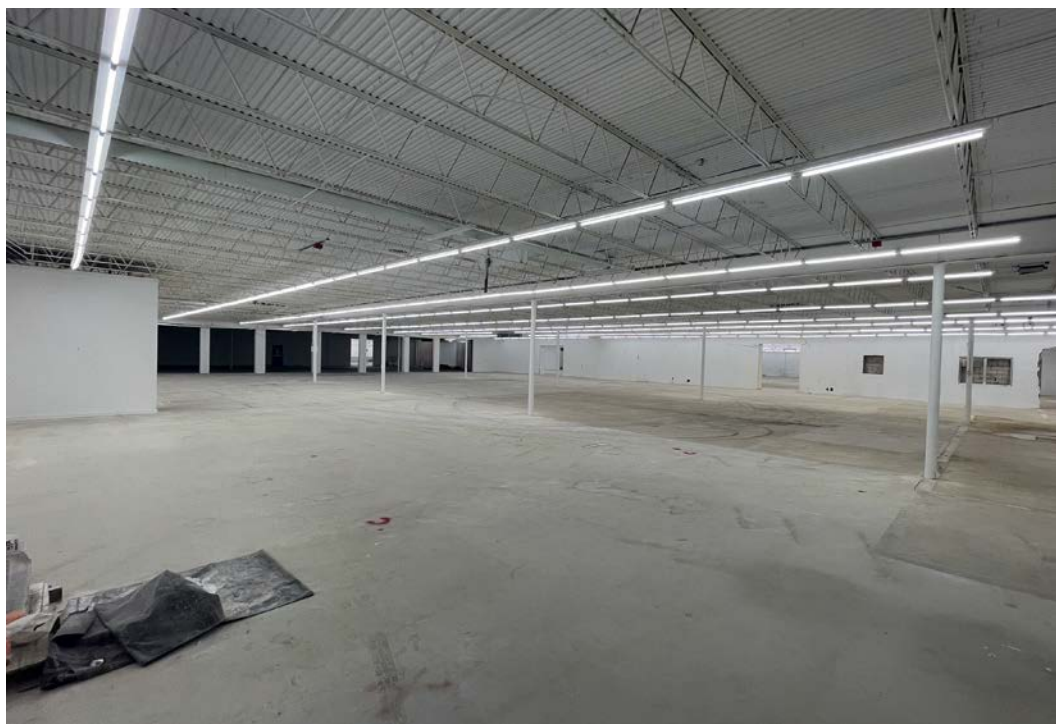


±56,244 SF INDUSTRIAL WAREHOUSE | 3601 SE Dixie Hwy, Stuart, FL 34997

NAISouthcoast

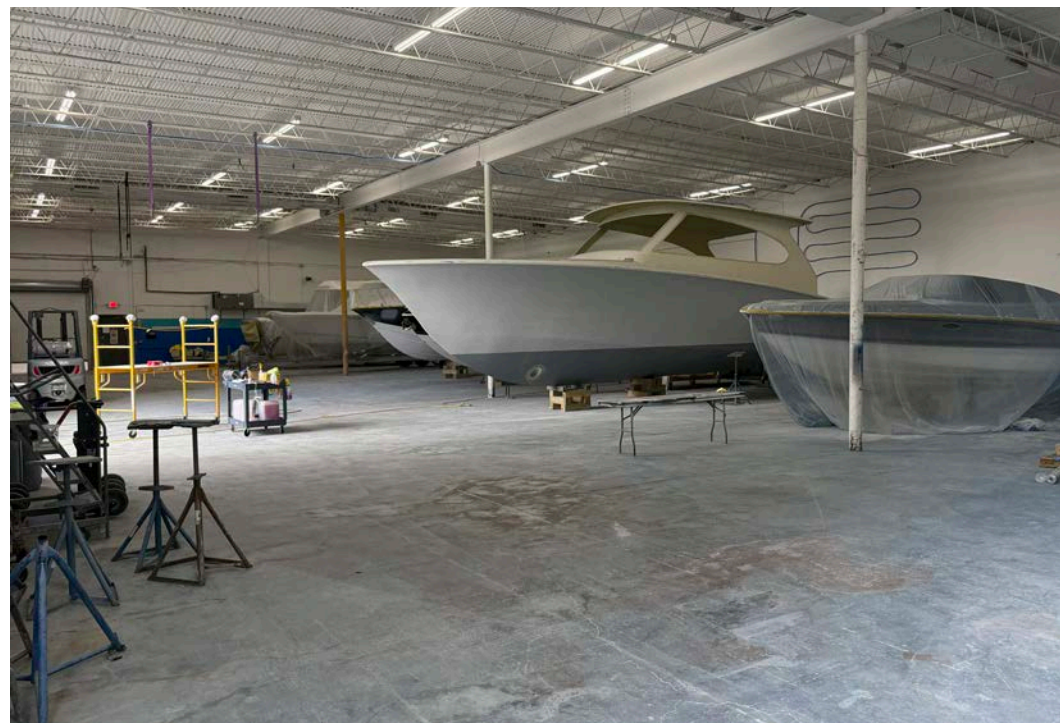
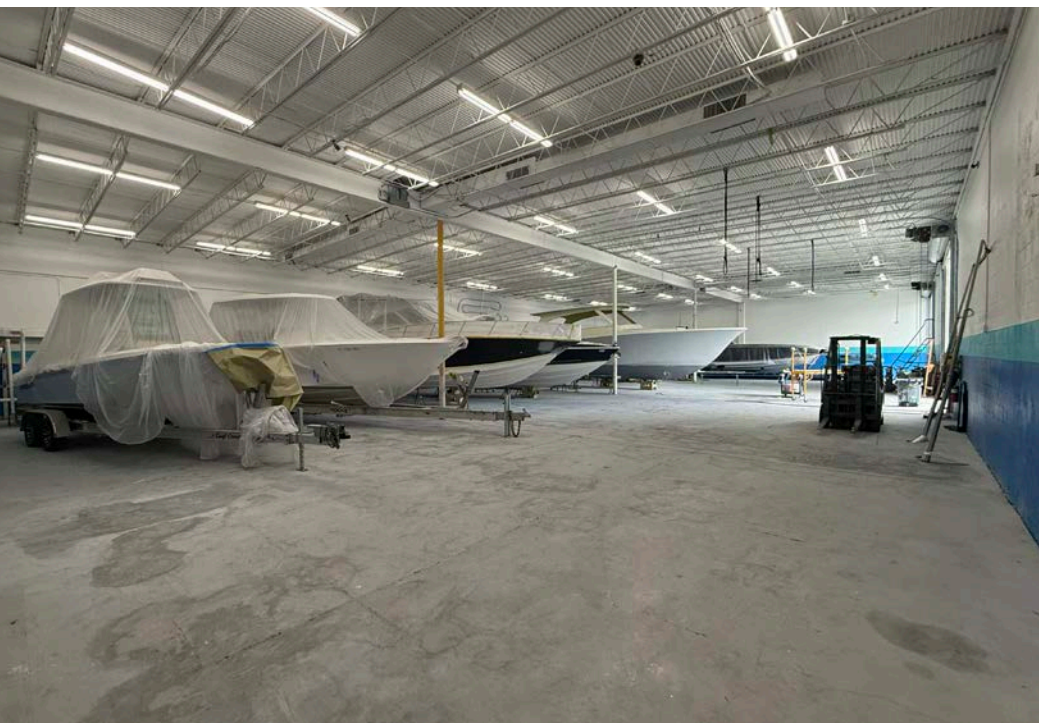


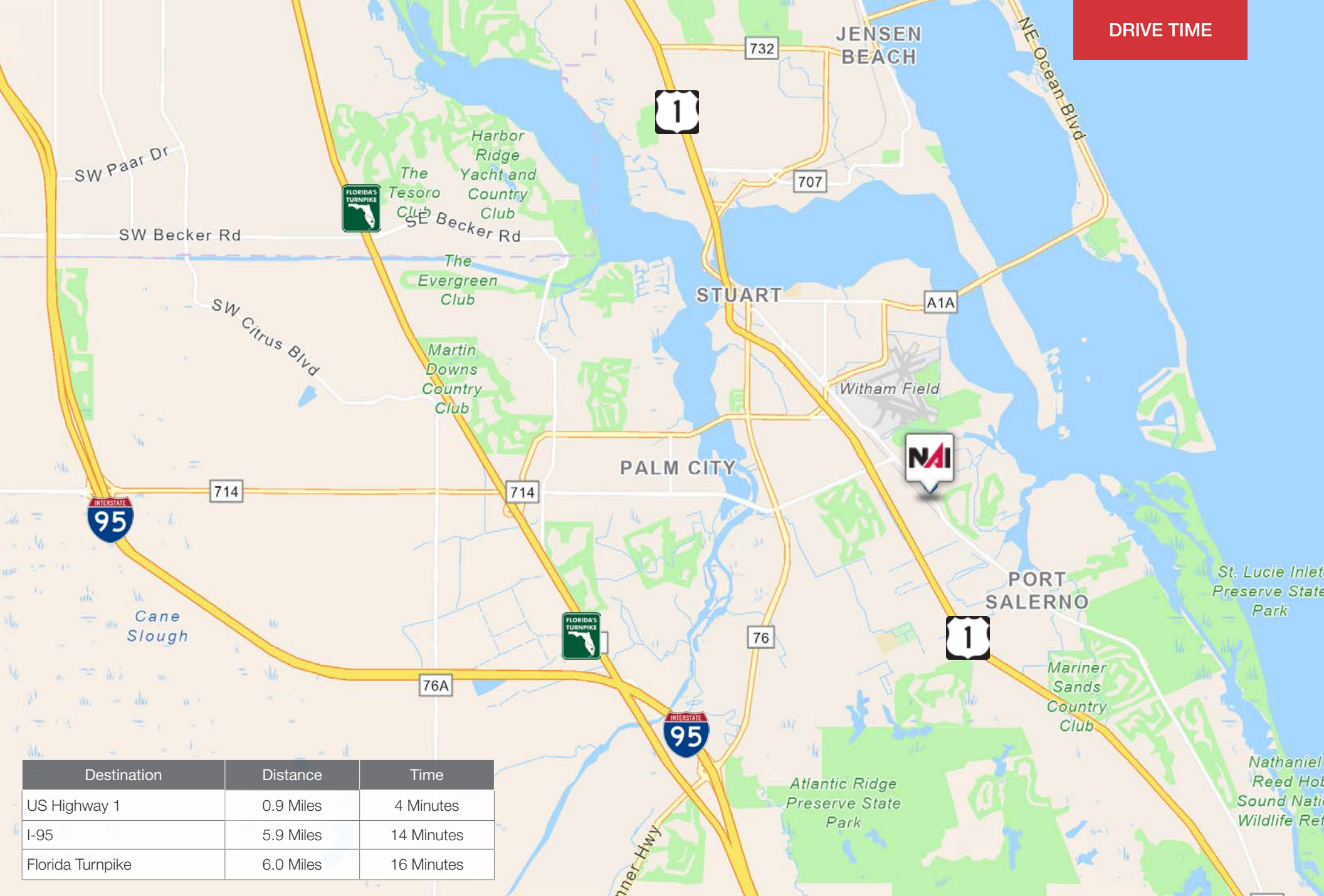




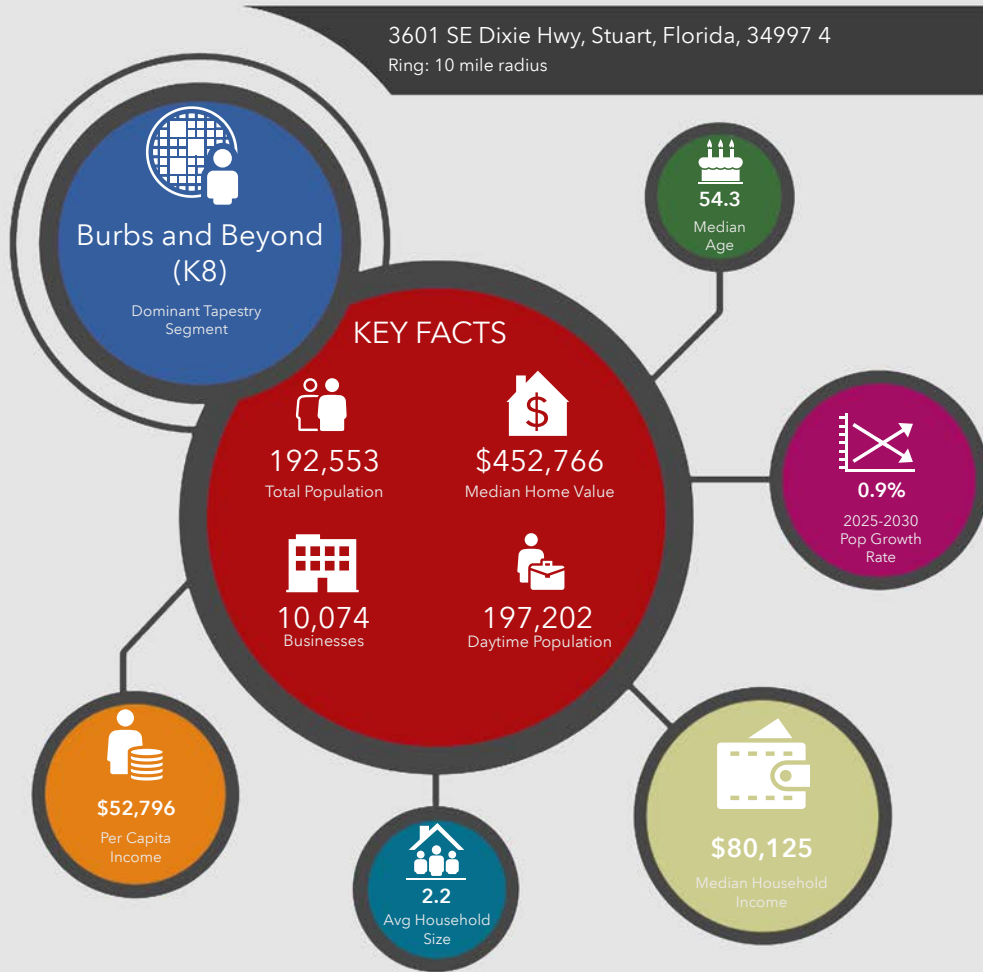


INTERIOR
PHOTOS

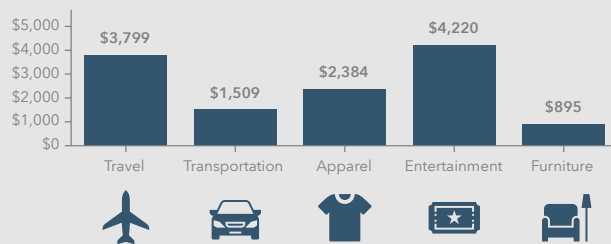




3601 SE Dixie Hwy, Stuart, Florida, 34997 4
Ring: 10 mile radius



KEY SPENDING FACTS



NAI Southcoast
COMMERCIAL REAL ESTATE SERVICES, WORLDWIDE

Source: This infographic contains data provided by Esri (2025, 2030), Esri-Data Axle (2025), Esri-U.S. BLS (2025).

© 2025 Esri

Spending facts are average annual dollars per household

Population

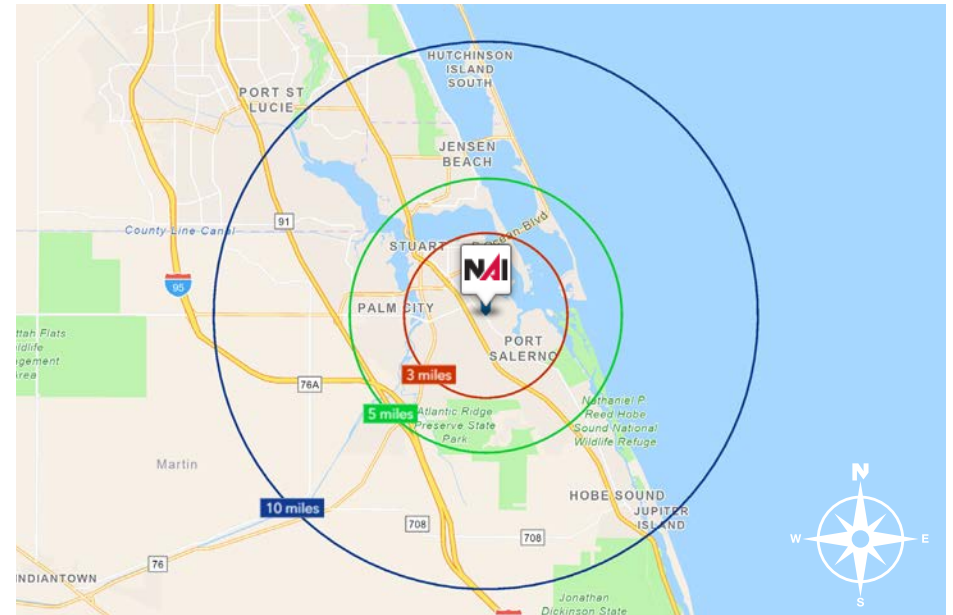
3 Mile:	53,648
5 Mile:	96,230
10 Mile:	192,553

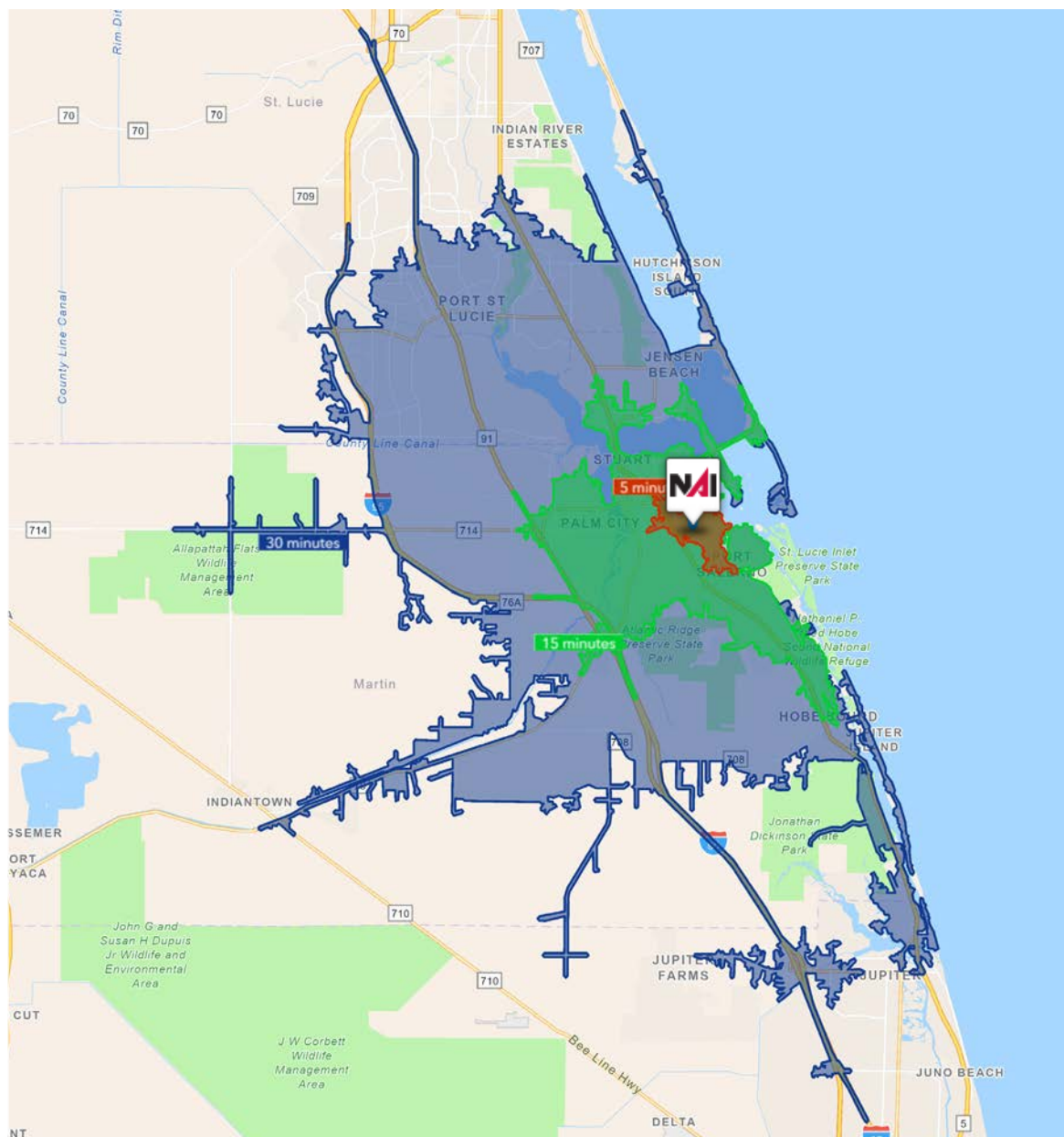
Average Household Income

3 Mile:	\$98,898
5 Mile:	\$115,632
10 Mile:	\$118,009

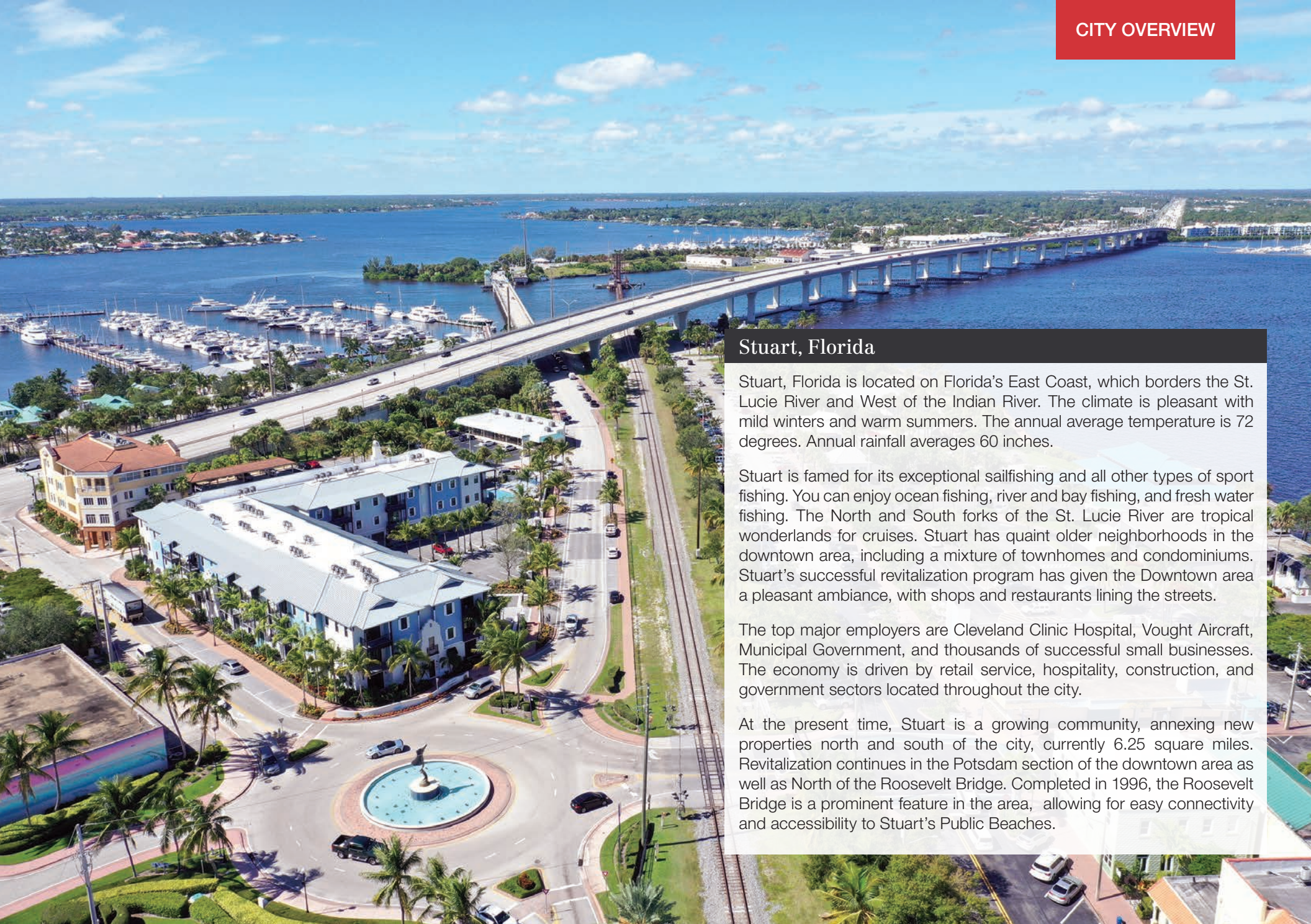
Median Age

3 Mile:	51.9
5 Mile:	55.3
10 Mile:	54.3





5 Minutes	15 Minutes	30 Minutes
7,473 2010 Population	82,855 2010 Population	261,593 2010 Population
8,279 2025 Population	92,219 2025 Population	317,145 2025 Population
10.7% 2010-2025 Population Growth	11.3% 2010-2025 Population Growth	21.2% 2010-2025 Population Growth
-% 2025-2030 (Annual) Est. Population Growth	0.27% 2025-2030 (Annual) Est. Population Growth	1.46% 2025-2030 (Annual) Est. Population Growth
40.9 2025 Median Age	53.7 2025 Median Age	49.4 2025 Median Age
\$102,607 Average Household Income	\$110,845 Average Household Income	\$113,308 Average Household Income
35.4% Percentage with Associates Degree or Better	48.2% Percentage with Associates Degree or Better	46.0% Percentage with Associates Degree or Better
44.5% Percentage in White Collar Profession	60.5% Percentage in White Collar Profession	59.2% Percentage in White Collar Profession



Stuart, Florida

Stuart, Florida is located on Florida's East Coast, which borders the St. Lucie River and West of the Indian River. The climate is pleasant with mild winters and warm summers. The annual average temperature is 72 degrees. Annual rainfall averages 60 inches.

Stuart is famed for its exceptional sailfishing and all other types of sport fishing. You can enjoy ocean fishing, river and bay fishing, and fresh water fishing. The North and South forks of the St. Lucie River are tropical wonderlands for cruises. Stuart has quaint older neighborhoods in the downtown area, including a mixture of townhomes and condominiums. Stuart's successful revitalization program has given the Downtown area a pleasant ambiance, with shops and restaurants lining the streets.

The top major employers are Cleveland Clinic Hospital, Vought Aircraft, Municipal Government, and thousands of successful small businesses. The economy is driven by retail service, hospitality, construction, and government sectors located throughout the city.

At the present time, Stuart is a growing community, annexing new properties north and south of the city, currently 6.25 square miles. Revitalization continues in the Potsdam section of the downtown area as well as North of the Roosevelt Bridge. Completed in 1996, the Roosevelt Bridge is a prominent feature in the area, allowing for easy connectivity and accessibility to Stuart's Public Beaches.

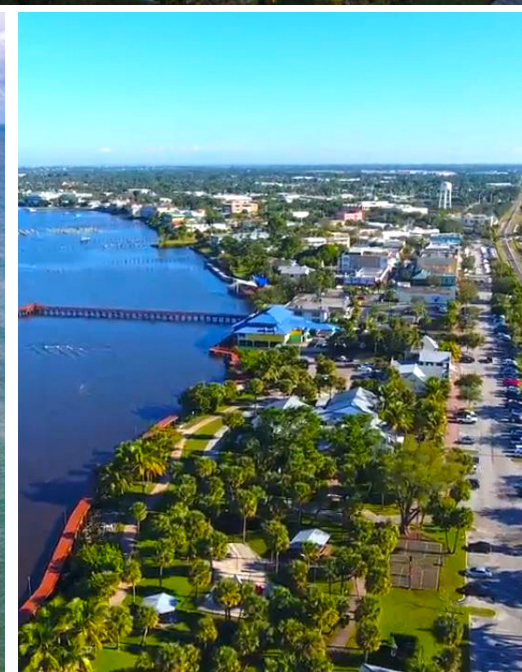
Martin County, Florida

The cities that make up Martin County include Jensen Beach/Rio, Stuart/ Sewall's Point, Hutchinson Island, Hobe Sound, Jupiter/ Tequesta, Palm City, Port Salerno and Indiantown. Martin County is a wonderful place to visit and live, with beaches, golf, fishing and boating. The County boasts arts, quaint downtowns with shops, gourmet dining, galleries, museums, historic places, festivals and more.

Martin County is for...

The golf enthusiast... Martin County is home to over 35 world-class golf courses all within a 15-mile radius. The sun worshiper... The County offers its visitors and residents alike some of the finest beaches on the east coast. The discriminating arts shopper... More than 20 galleries participate in a monthly First Thursday gallery night. Many of these galleries are in the historic downtowns of Stuart, Jensen Beach, Port Salerno and Hobe Sound. The music lover... The historic Lyric Theatre offers a wide array of first-class talent nearly 300 days a year... This acoustically amazing theatre features concerts for all music lovers, from classical to rock and roll, and theatrical performances by local and national talent.

Mark your calendars for a plethora of events to look forward to in Martin County, Florida. The Stuart Air Show, Stuart Boat Show, ArtsFest, and the Martin County Fair are just some of the many events taking place throughout the year. The Treasure Coast Children's Museum, located at Indian Riverside Park, is a great place for kids and families, offering a water play area, fishing, and a riverfront view. Often, there are events in the park including concerts, orchid shows, and more. Indian Riverside Park also features the Maritime and Yachting Museum. Hutchinson Island is home to the Elliott Museum which celebrates the genius of innovation, creativity and the historical events of Martin County. Named after the prolific inventor Sterling Elliott, the museum hosts permanent exhibits showcasing Model A Trucks, early transportation, the history of Stuart and its surrounding regions, and baseball memorabilia. For the scientifically minded and curious kids, the Florida Oceanographic Coastal Center offers fun opportunities to learn about our local ecosystem.





Douglas Legler

Principal | Broker Associate

+1 772 405 7778
douglas@naisouthcoast.com



Casey Combs

Broker Associate

+1 772 285 8769
ccombs@naisouthcoast.com

±56,244 SF Industrial Warehouse

3601 SE Dixie Hwy, Stuart, FL 34997

FOR SALE

\$7,595,000