

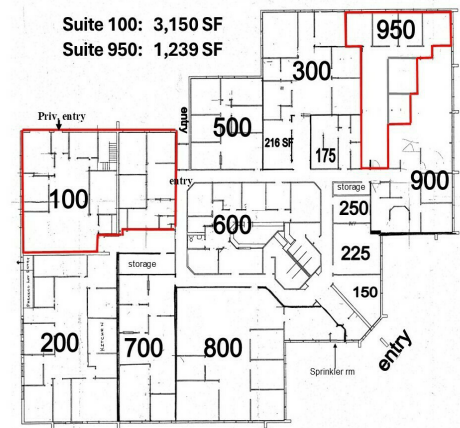
# 333 Commerce Dr. #100 & #950

Crystal Lake, IL 60014

## For Lease

MLS #12442798

OFFICE



OFFICE 1,239 - 3,150 SF

\$1,755.00 - \$5,220.00 PER MONTH (GROSS)

### OFFICE SUITES AVAILABLE 1,239 SF and 3,150 SF

**SUITE 100:** 3,150 SF featuring 7 private offices, conference room, reception and waiting area, kitchen, open clerical and large storage room. Two entrances – one interior through common hallway and one private exterior for employees. Gross lease price is \$5,220/mo. (\$19.88 psf)

**SUITE 950:** 1,239 SF featuring 4 private offices, conference room, and waiting area. Gross lease price is \$1,755/mo (\$17 psf)

Gross monthly rent includes the tenant's share of the real estate taxes and all common area maintenance costs (including utilities – except for Internet and phone).

Common hallways and two separate bathrooms. Front and rear parking lots with ample spaces located at the front and rear of the one story multi-tenant building.

Other tenants include several medical and counseling practices, a US congress person, staffing agency, and a computer consulting firm.

### Specifications

Building Size:	20,600 SF
Year Built:	1985
HVAC System:	GFA/ Central Air
Electrical:	100 amp
Sprinklers:	No
Washrooms:	Common
Ceiling Height:	9 ft
Parking:	2 Lots 80 Spaces
Sewer/Water:	City
Zoning:	O
Utilities:	Included
CAM & Taxes	Included
PIN #:	14-32-177-012

[CLICK HERE TO VIEW OUR WEBSITE](#)

No warranty or representation is made as to the accuracy of the foregoing information. Terms of sale or lease and availability are subject to change or withdrawal without notice. This document is for information purposes only. No offer of sub-agency is being made.



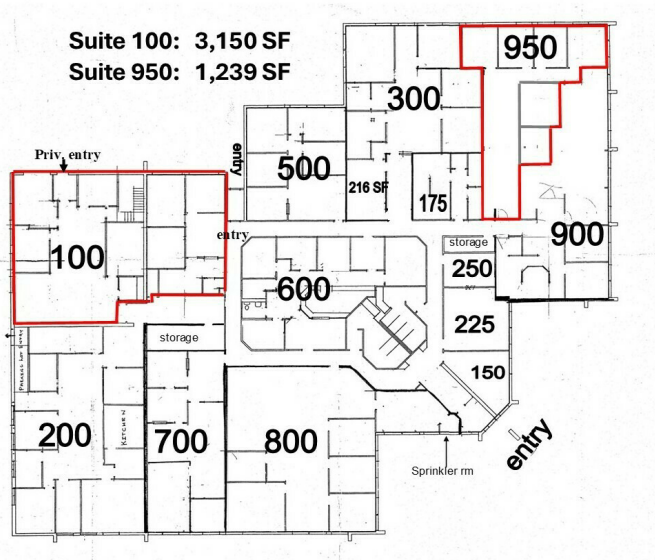
Senior Broker  
**Michael Deacon**  
MichaelD@PremierCommercialRealty.com  
O: 847.854.2300 x28 C: 815.814.6500

# 333 Commerce Dr. #100 & #950

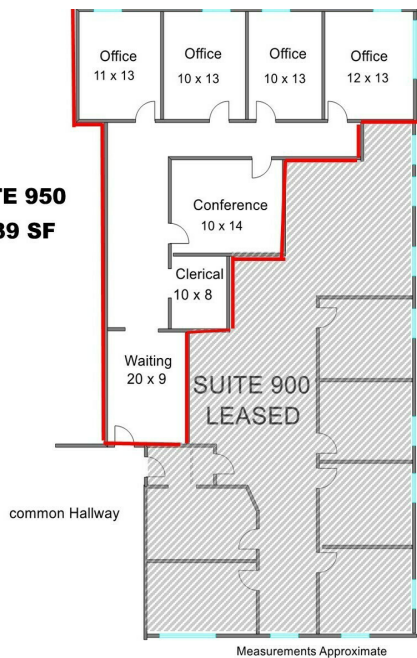
Crystal Lake, IL 60014

## For Lease

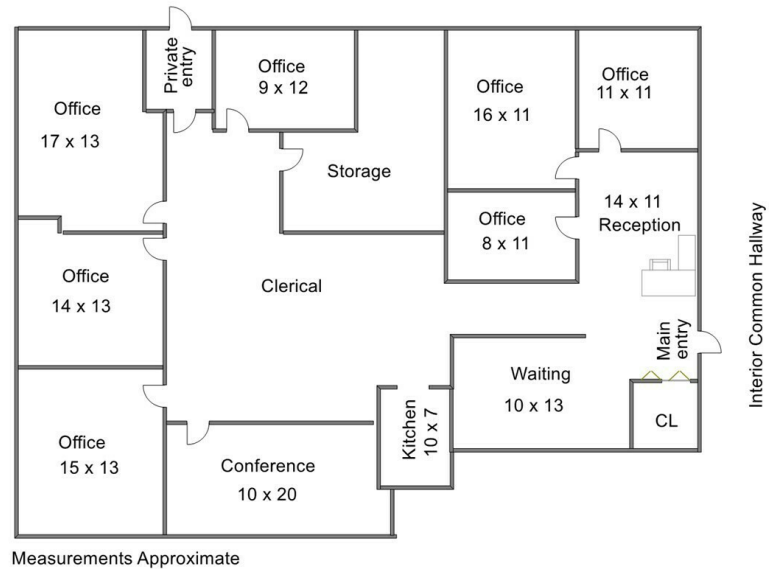
OFFICE



**SUITE 950**  
**1,239 SF**



**SUITE 100 3,150 SF**



[CLICK HERE TO VIEW OUR WEBSITE](#)

No warranty or representation is made as to the accuracy of the foregoing information. Terms of sale or lease and availability are subject to change or withdrawal without notice. This document is for information purposes only. No offer of sub-agency is being made.



[www.PremierCommercialRealty.com](http://www.PremierCommercialRealty.com) | 847.854.2300 | 9225 S. Route 31, Lake in the Hills, IL 60156

Senior Broker  
**Michael Deacon**  
[MichaelD@PremierCommercialRealty.com](mailto:MichaelD@PremierCommercialRealty.com)  
O: 847.854.2300 x28 C: 815.814.6500

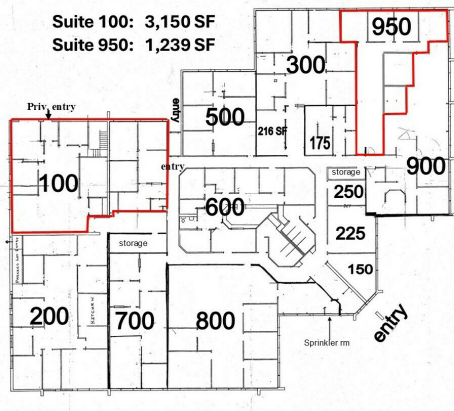


## 333 Commerce Dr. #100 & #950

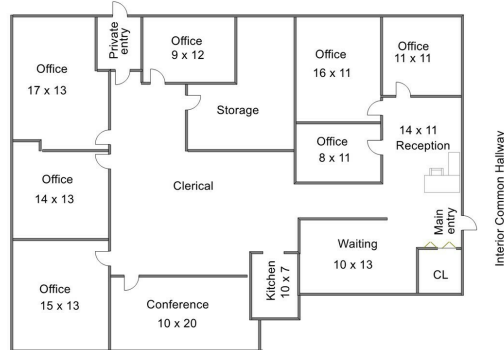
# Crystal Lake, IL 60014

# For Lease

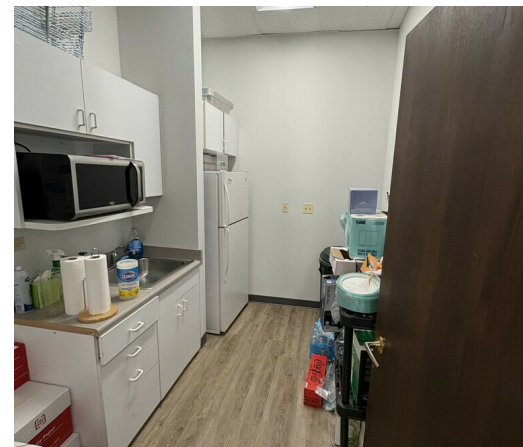
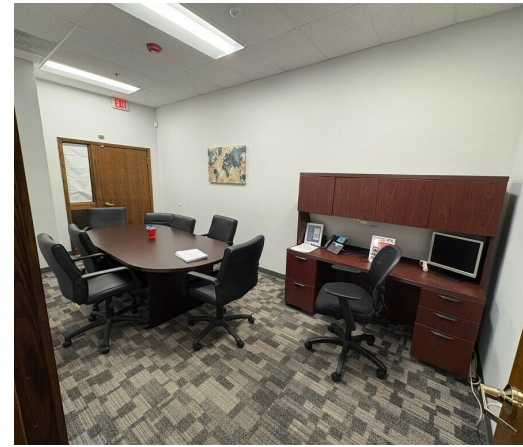
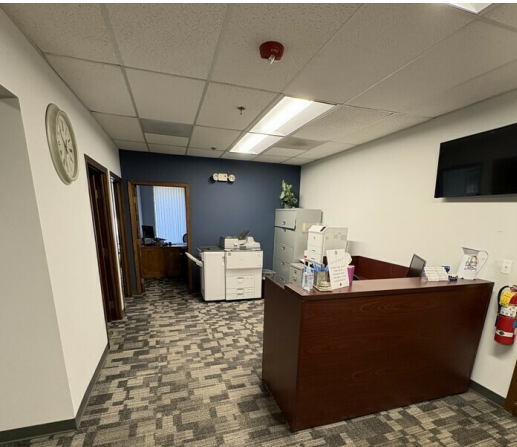
OFFICE



SUITE 100 3,150 SF



Measurements Approximate



**CLICK HERE TO VIEW OUR WEBSITE**

*No warranty or representation is made as to the accuracy of the foregoing information. Terms of sale or lease and availability are subject to change or withdrawal without notice. This document is for information purposes only. No offer of sub-agency is being made.*



## Senior Broker

**Michael Deacon**

MichaelD@PremierCommercialRealty.com

O: 847.854.2300 x28 C: 815.814.6500

www.PremierCommercialRealty.com | 847.854.2300 | 9225 S. Route 31, Lake in the Hills, IL 60156

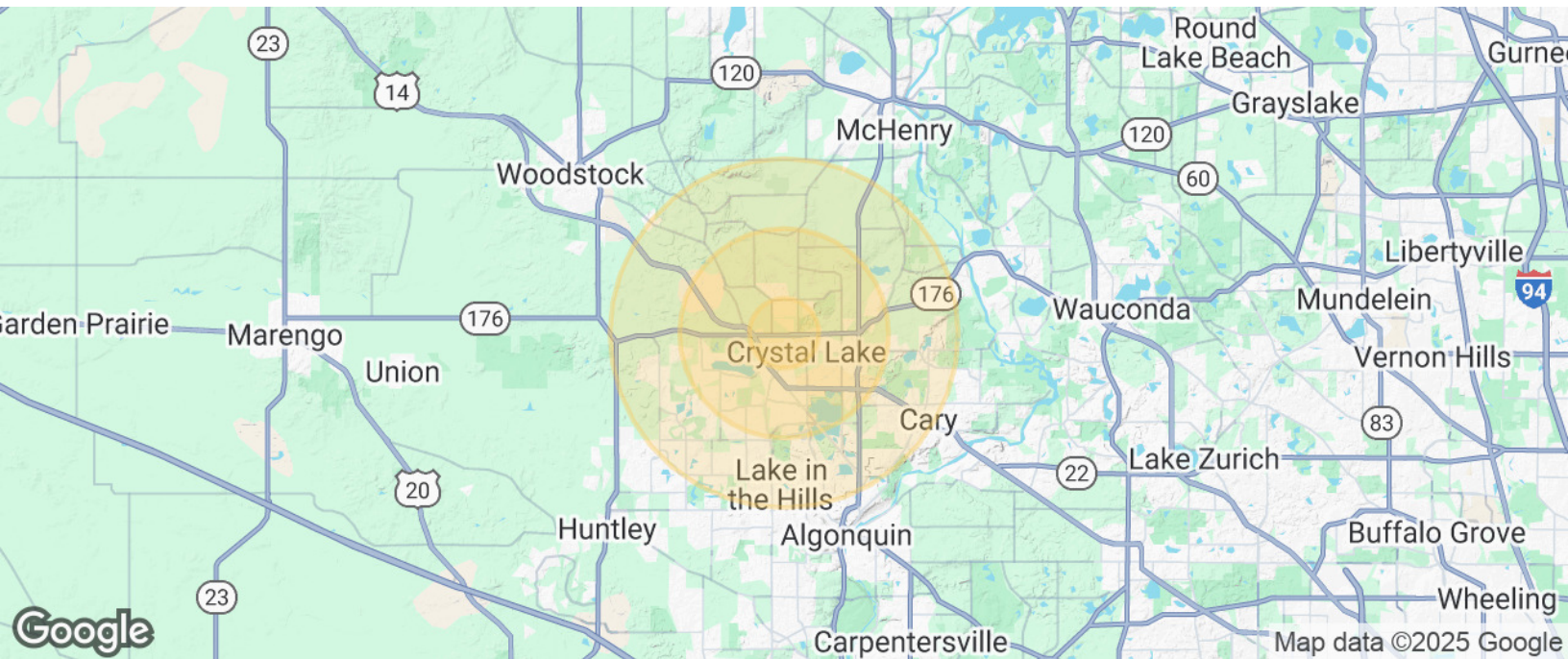


# 333 Commerce Dr. #100 & #950

Crystal Lake, IL 60014

## For Lease

OFFICE



Population	1 Mile	3 Miles	5 Miles
Total Population	7,862	40,431	93,256
Average Age	41	41	40
Average Age (Male)	40	40	39
Average Age (Female)	42	42	41

Households & Income	1 Mile	3 Miles	5 Miles
Total Households	2,935	15,078	33,750
# of Persons per HH	2.7	2.7	2.8
Average HH Income	\$137,490	\$131,063	\$136,630
Average House Value	\$329,248	\$333,187	\$335,338

Demographics data derived from AlphaMap

[CLICK HERE TO VIEW OUR WEBSITE](#)

No warranty or representation is made as to the accuracy of the foregoing information. Terms of sale or lease and availability are subject to change or withdrawal without notice. This document is for information purposes only. No offer of sub-agency is being made.



Senior Broker  
**Michael Deacon**  
MichaelD@PremierCommercialRealty.com  
O: 847.854.2300 x28 C: 815.814.6500