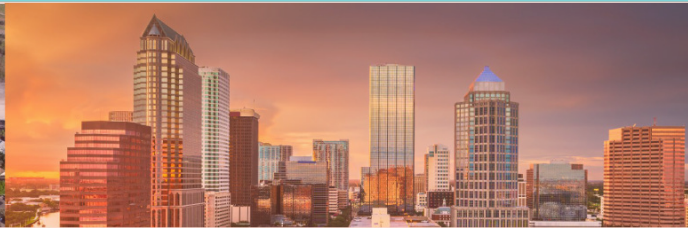


We know this land.



Eshenbaugh
LAND COMPANY

The Dirt Dog



304 S. WILLOW AVENUE

TAMPA, FL 33606

813.287.8787

www.thedirtdog.com

Property Description



PROPERTY DESCRIPTION

The offering consists of 5.98 acres positioned at the southeast corner of Cortaro Drive and Upper Creek Drive within the Sun City area of Hillsborough County. The site benefits from off-site retention and excellent visibility and convenient access, with frontage on both Cortaro Drive and Upper Creek Drive.

The site is zoned PD (73-0186) within The Villages of Cypress Creek. Under this designation, the property is permitted for uses consistent with the Commercial Intensive (CI) zoning district, allowing for a broad range of medical, commercial, office, and retail uses. These entitlements offer flexibility and support a variety of development concepts.

Given its location within a growing commercial corridor, its favorable zoning, and its development-ready physical characteristics, the property is well suited for a wide range of medical, professional, and commercial uses.

LOCATION DESCRIPTION

The property is strategically located at the southeast corner of Cortaro Drive and Upper Creek Drive within The Villages of Cypress Creek in Sun City Center—one of the most established and rapidly growing 55+ and mixed-use corridors in South Hillsborough County. The immediate area benefits from strong demographics, a large concentration of active adult communities, and a steady influx of residential development.

The site sits less than a mile east of I-75, two miles west of US Highway 301, and just north of State Road 674, the major east-west and north-south corridors that serve Sun City Center, Ruskin, Wimauma, and the broader Southshore market. Traffic volumes along SR-674 exceed 30,000 vehicles per day, creating a strong commercial environment anchored by medical providers, national retailers, assisted living facilities, and regional service businesses.

PRICE

\$4,300,000

Aerial- Eastern Facing



Aerial- Western Facing



Parcel Split



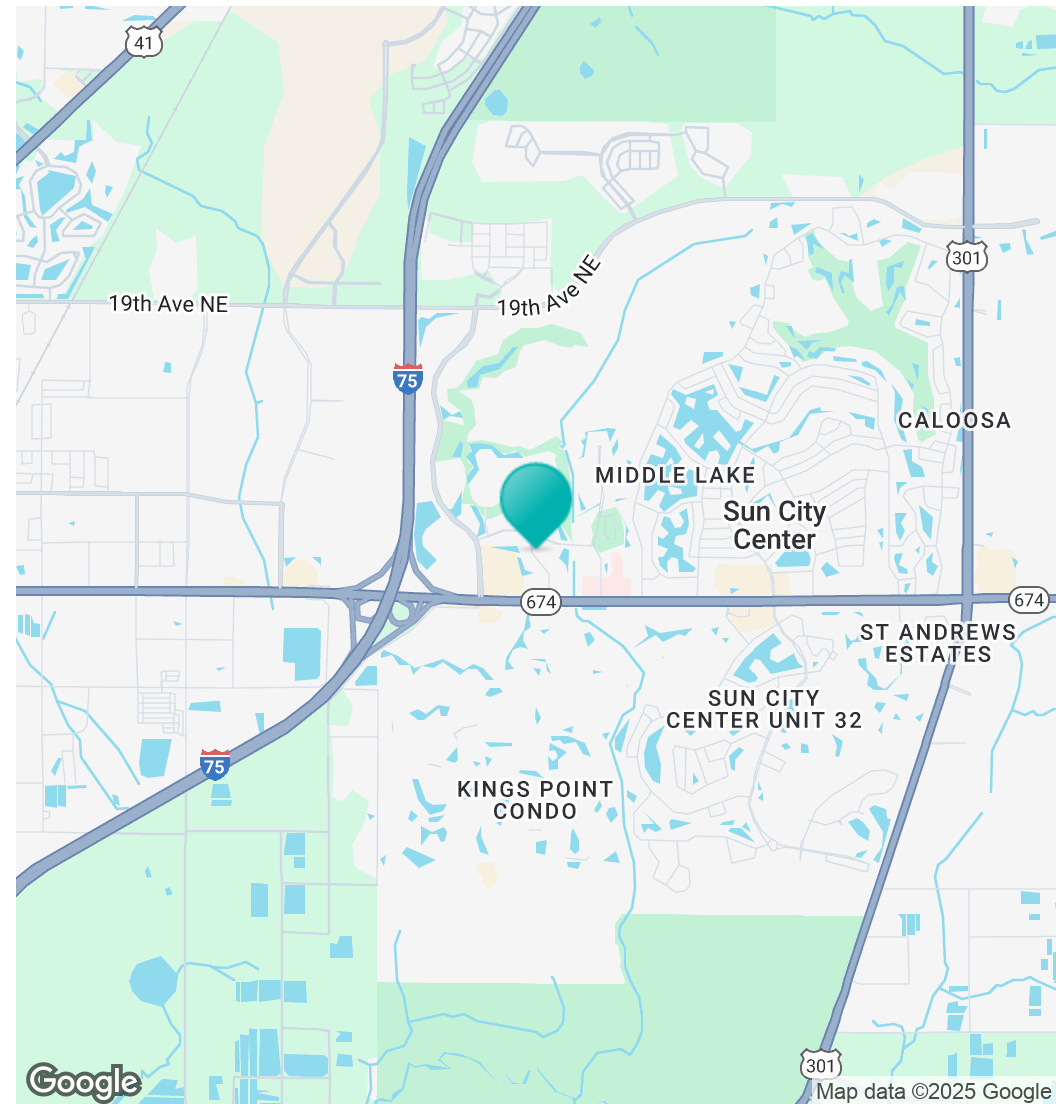
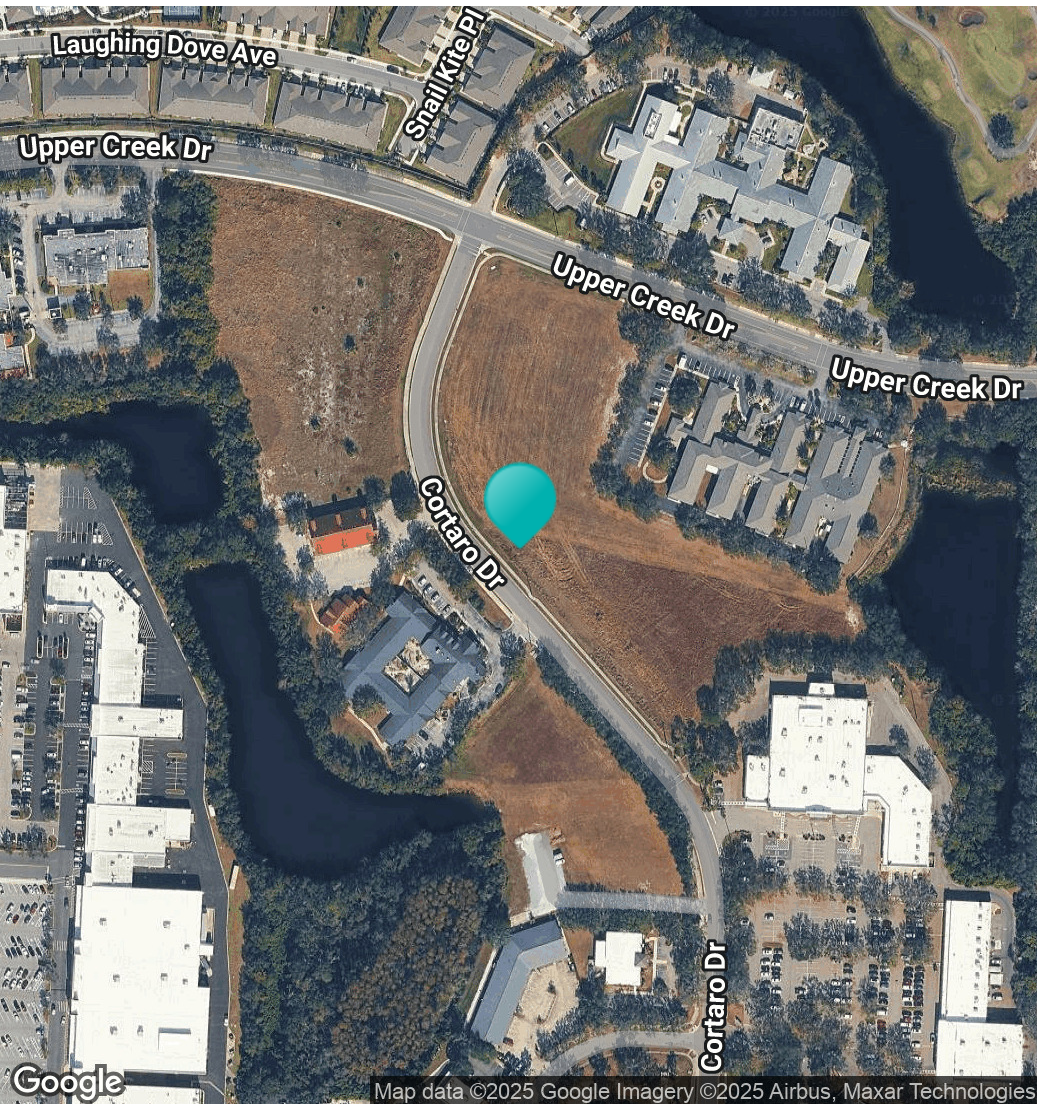
Additional Photos



Drone Video



Location Maps



Demographics Map & Report

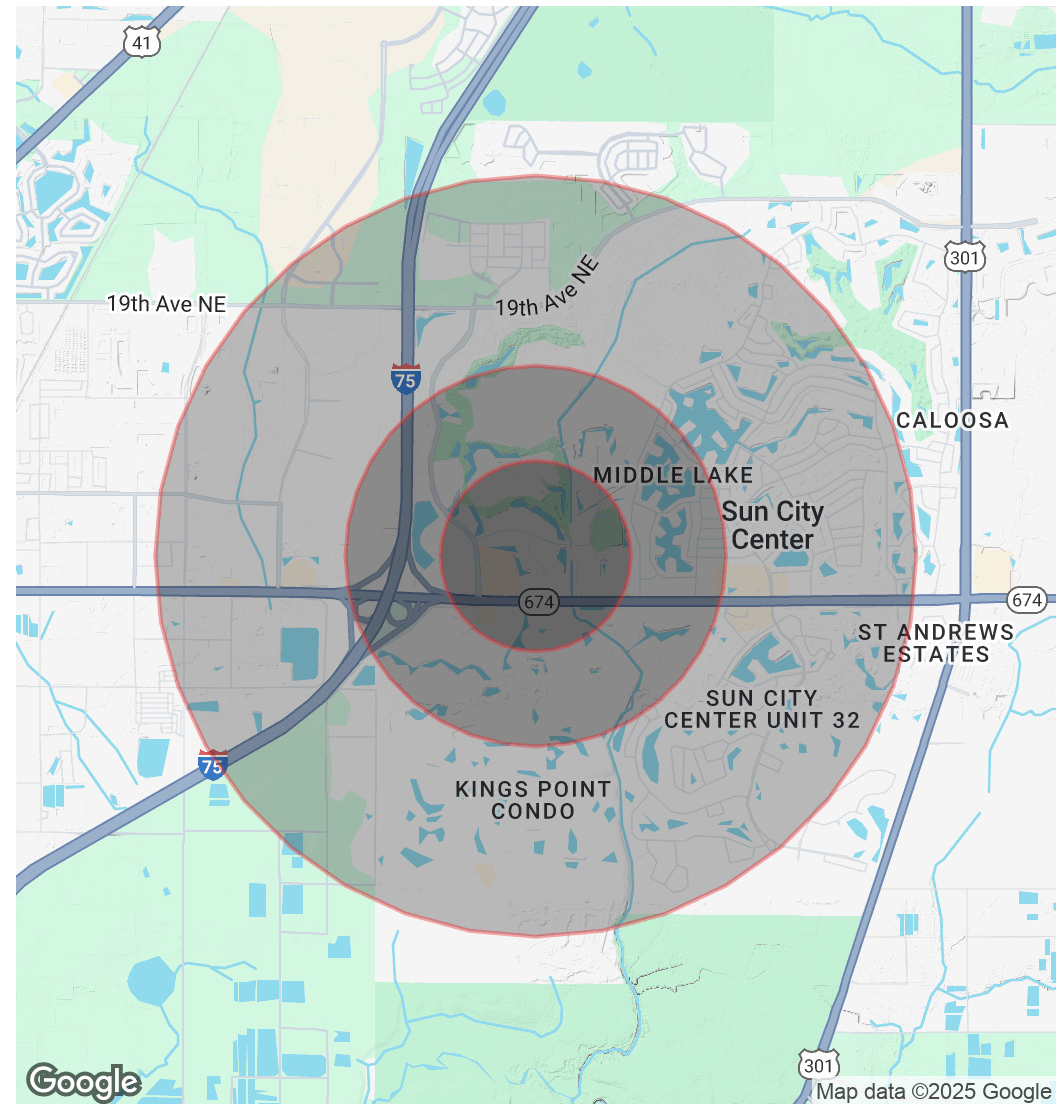
POPULATION

| | 0.5 MILES | 1 MILE | 2 MILES |
|----------------------|-----------|--------|---------|
| Total Population | 1,648 | 5,467 | 21,528 |
| Average Age | 73 | 73 | 68 |
| Average Age (Male) | 71 | 73 | 67 |
| Average Age (Female) | 74 | 74 | 68 |

HOUSEHOLDS & INCOME

| | 0.5 MILES | 1 MILE | 2 MILES |
|---------------------|-----------|-----------|-----------|
| Total Households | 641 | 2,744 | 11,221 |
| # of Persons per HH | 2.6 | 2 | 1.9 |
| Average HH Income | \$83,586 | \$71,902 | \$80,444 |
| Average House Value | \$386,785 | \$309,754 | \$291,046 |

Demographics data derived from AlphaMap





Your Advisors



J. Michael Strahan, ALC, CCIM, MAB
Senior Advisor/Partner
813.287.8787 x105
michael@thedirtdog.com

Questions | Give us a call or drop us an email

Eshenbaugh
LAND COMPANY

The Dirt Dog

www.thedirtdog.com



Confidentiality & Disclaimer

All materials and information received or derived from Eshenbaugh Land Company, LLC its directors, officers, agents, advisors, affiliates and/or any third party sources are provided without representation or warranty as to completeness, veracity, or accuracy, condition of the property, compliance or lack of compliance with applicable governmental requirements, developability or suitability, financial performance of the property, projected financial performance of the property for any party's intended use or any and all other matters.

Neither Eshenbaugh Land Company, LLC its directors, officers, agents, advisors, or affiliates makes any representation or warranty, express or implied, as to accuracy or completeness of the any materials or information provided, derived, or received. Materials and information from any source, whether written or verbal, that may be furnished for review are not a substitute for a party's active conduct of its own due diligence to determine these and other matters of significance to such party. Eshenbaugh Land Company, LLC will not investigate or verify any such matters or conduct due diligence for a party unless otherwise agreed in writing.

EACH PARTY SHALL CONDUCT ITS OWN INDEPENDENT INVESTIGATION AND DUE DILIGENCE.

Any party contemplating or under contract or in escrow for a transaction is urged to verify all information and to conduct their own inspections and investigations including through appropriate third party independent professionals selected by such party. All financial data should be verified by the party including by obtaining and reading applicable documents and reports and consulting appropriate independent professionals. Eshenbaugh Land Company, LLC makes no warranties and/or representations

regarding the veracity, completeness, or relevance of any financial data or assumptions. Eshenbaugh Land Company, LLC does not serve as a financial advisor to any party regarding any proposed transaction. All data and assumptions regarding financial performance, including that used for financial modeling purposes, may differ from actual data or performance. Any estimates of market rents and/or projected rents that may be provided to a party do not necessarily mean that rents can be established at or increased to that level. Parties must evaluate any applicable contractual and governmental limitations as well as market conditions, vacancy factors and other issues in order to determine rents from or for the property.

Legal questions should be discussed by the party with an attorney. Tax questions should be discussed by the party with a certified public accountant or tax attorney. Title questions should be discussed by the party with a title officer or attorney. Questions regarding the condition of the property and whether the property complies with applicable governmental requirements should be discussed by the party with appropriate engineers, architects, contractors, other consultants and governmental agencies. All properties and services are marketed by Eshenbaugh Land Company, LLC in compliance with all applicable fair housing and equal opportunity laws.

Eshenbaugh Land Company is a licensed real estate brokerage firm in Florida and William A. Eshenbaugh is the broker of record.