



LISTING DATA

Available SF: Suite 325 | 2,191 SF
Suite 340 | 6,536 SF

Clear Height: 17.5' - 20.5'

Zoning: IND-1/IND-5 (Orange County)

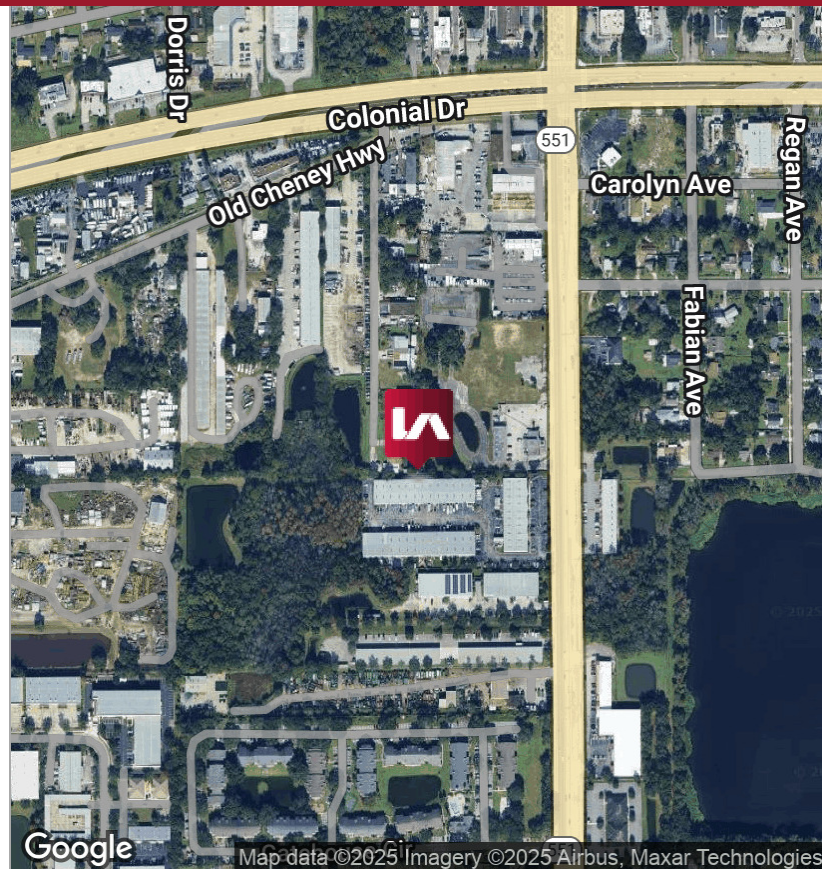
Loading: Front

Parking Ratio: 2.3/1,000 SF

Comments: Goldenrod Business Center is comprised of 3 Industrial/Flex buildings totaling 78,736 SF located in east central Orlando with convenient access to SR-50, SR-408, and SR-417. The project is professionally owned and managed making it an ideal location for years to come.

ECONOMIC DATA

Lease Rate: Call For Info



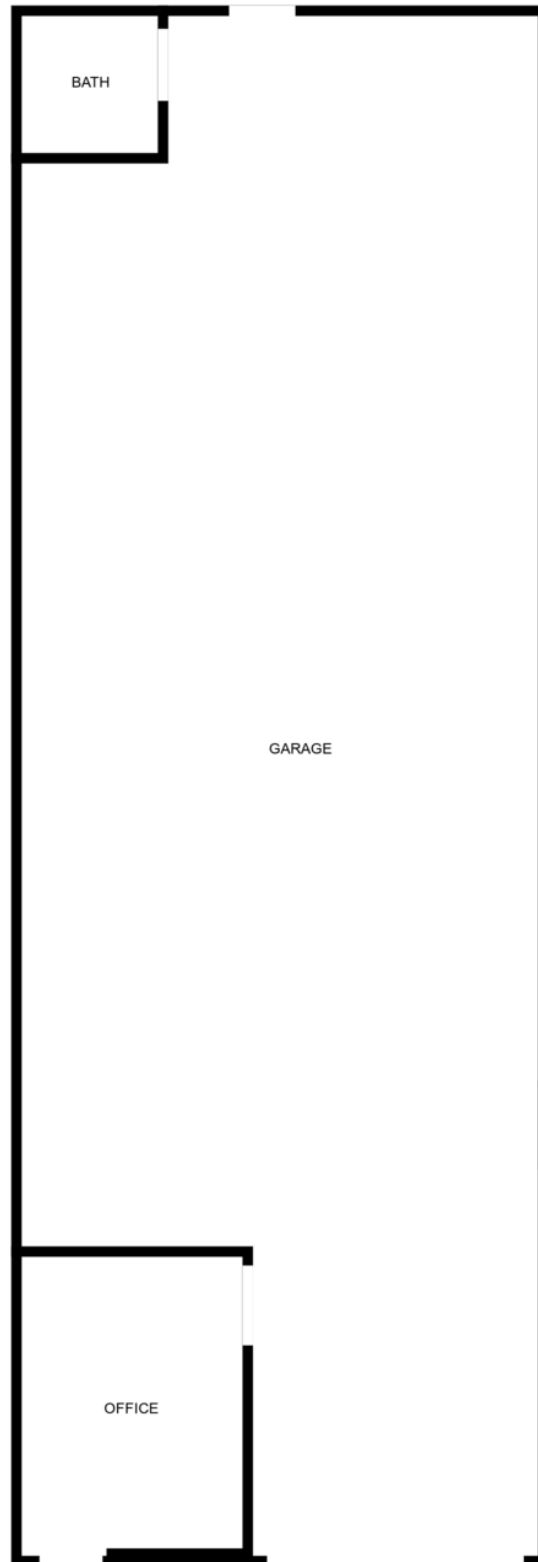


LEASE INFORMATION

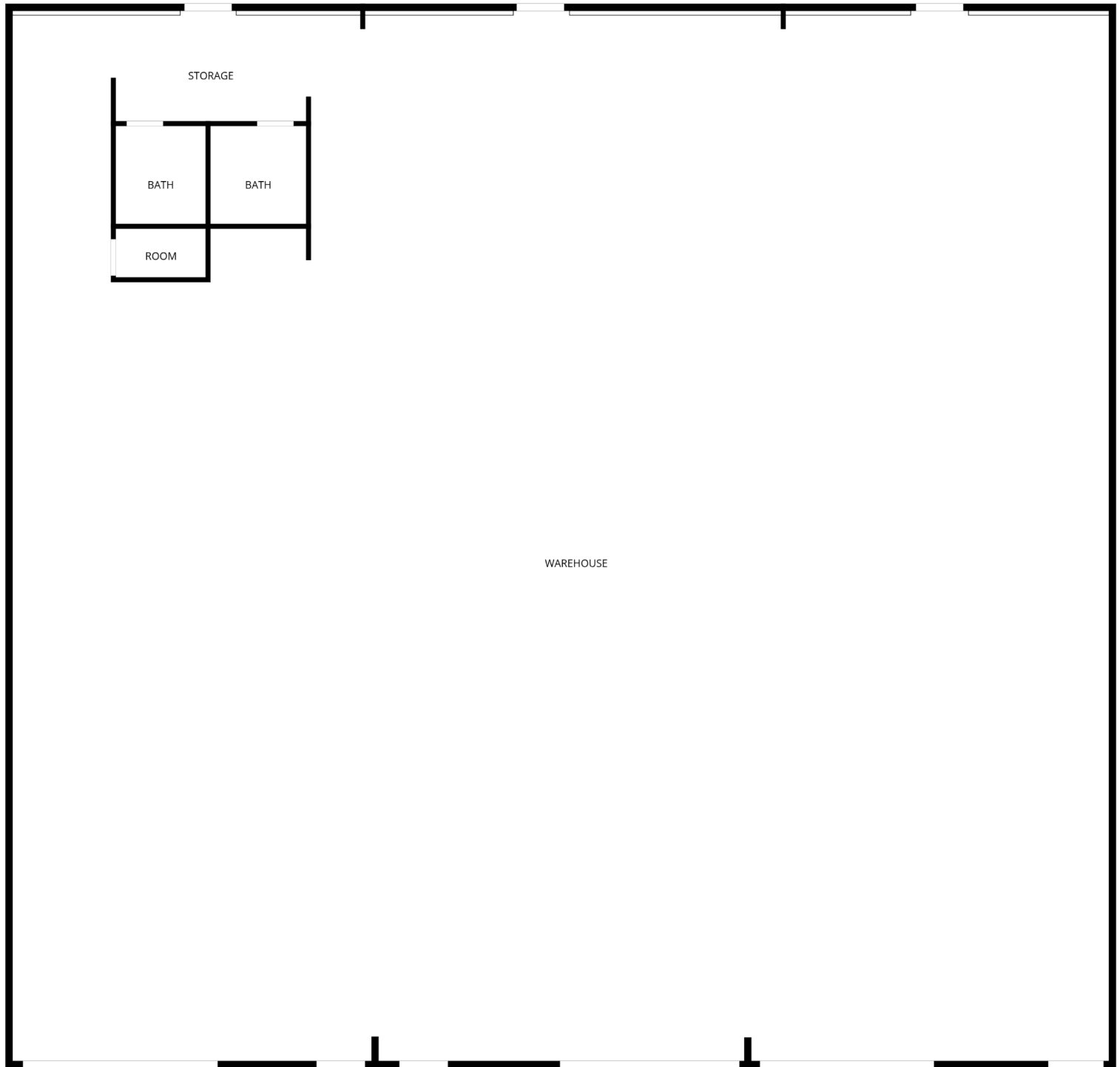
Lease Type:	NNN	Lease Term:	Negotiable
Total Space:	2,191 - 6,536 SF	Lease Rate:	Call For Info

AVAILABLE SPACES

SUITE	TENANT	SIZE (SF)	LEASE TYPE	LEASE RATE	DESCRIPTION
325	Available	2,191 SF	NNN	Call For Info	256 SF Office and One 12' x 14' Grade Level Door
340	Available	6,536 SF	NNN	Call For Info	400 SF Office and Three (3) 12' x 14' Grade Level Doors



SUITE 325 | 2,191 SF



SUITE 340 | 6,536 SF

FLOOR PLAN CREATED BY CUBICASA APP. MEASUREMENTS DEEMED HIGHLY RELIABLE BUT NOT GUARANTEED.