

# FOR LEASE



6819 Massachusetts Ave. | New Port Richey, FL 34653

1,115 SF | \$1,254/month

- Positioned on a well-traveled 4-lane roadway with excellent visibility and signage opportunities
- Welcoming covered porch with ramp accessibility provides an inviting entry way that enhances curb appeal
- Natural light & spacious interior includes large reception area with fire place, three private offices, storage closets, collaborative open workspace and a full kitchen with high tops ideal for employee engagement
- Original hardwood floors where classic charm meets durability, adding warmth and character throughout the space
- Exceptional parking ratio of 8 spaces per 1,000 SF - ideal for staff and client convenience
- Bus stop directly in front of the building for easy commuter access
- Well-suited for professional services, medical practices, or boutique agencies

## Office Space for Lease

**Danielle M. Ruiz**  
Vice President  
Cell: (727) 222-9869  
[druiz@cap-realty.com](mailto:druiz@cap-realty.com)

Visit us @ [www.cap-realty.com](http://www.cap-realty.com)



**COMMERCIAL ASSET  
PARTNERS**



# SPACIOUS INTERIOR

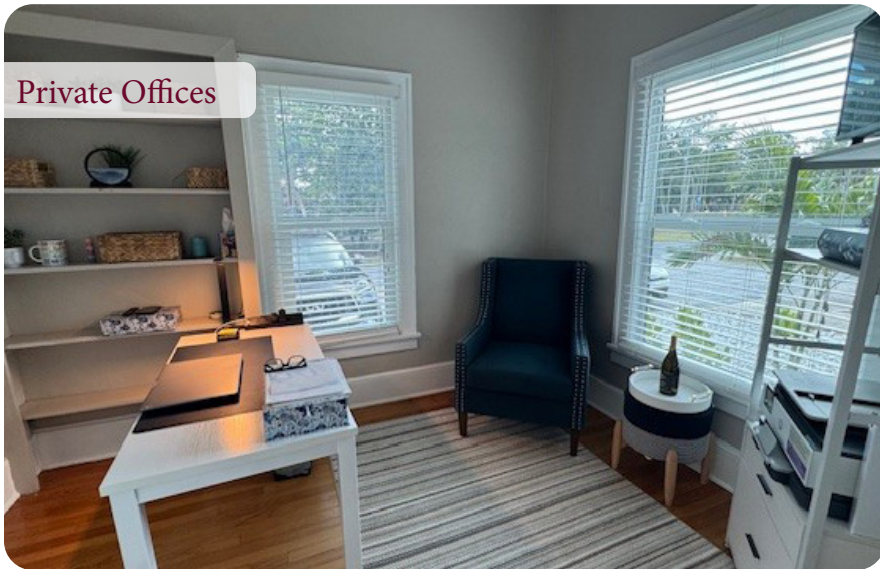
Collaborative Space



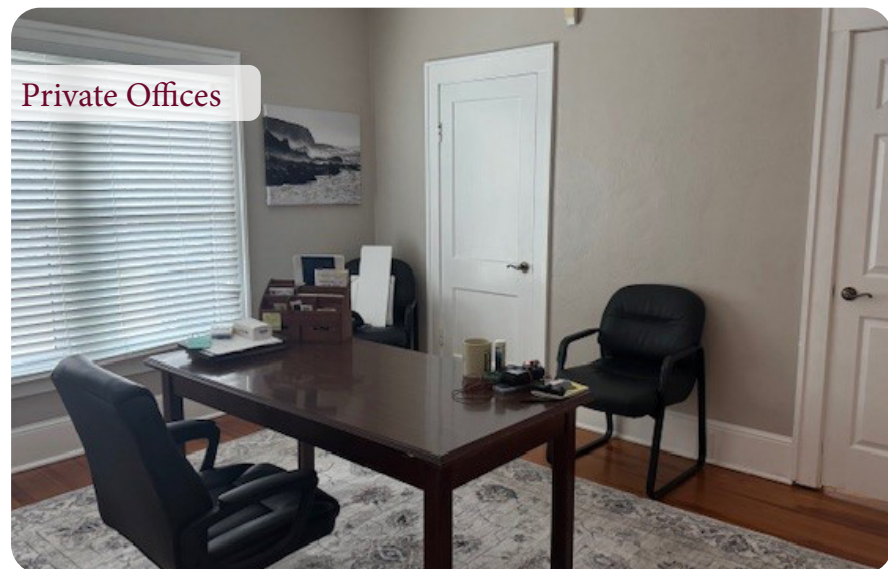
Reception



Private Offices



Private Offices



6819 MASSACHUSETTS AVE | FOR LEASE



# ENTRY POINTS AND INTERIOR FEATURES



Front Porch



Rear Office Entry



Rear Entrance



Breakroom



Storage Space

6819 MASSACHUSETTS AVE | FOR LEASE





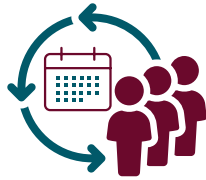
# COMMERCIAL ASSET PARTNERS

## DEMOGRAPHICS



8.4%

Population Growth



45

Median Age



189,948

Population



\$64,926

Average HH Income



6819 MASSACHUSETTS AVE | FOR LEASE

CAP-Realty.com

(727) 376-4900

This information is believed to be accurate, Broker is not responsible for misstatements of fact, errors or omissions, prior sale, change of price, terms or withdrawal from market without notice. Buyer and/or tenants shall verify all Information.



COMMERCIAL ASSET  
PARTNERS