



SPACE AVAILABLE FOR LEASE



189 S Orange Ave
1900-1970, Orlando,
FL 32801

Pricing:
\$28/SF
MODIFIED GROSS



ALPHA
EQUITY
REALTY & MANAGEMENT

PROPERTY HIGHLIGHTS:

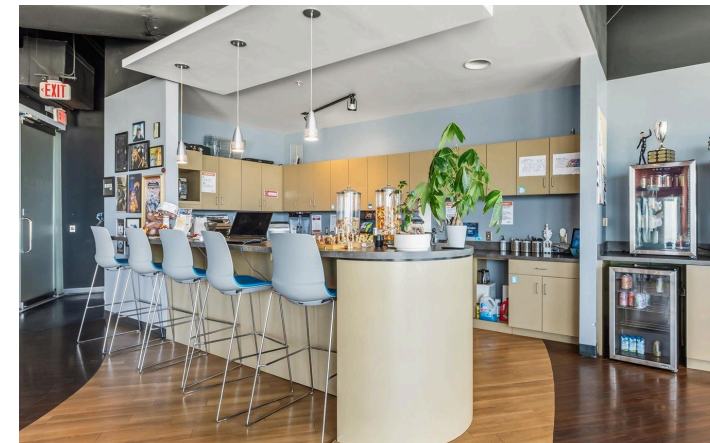
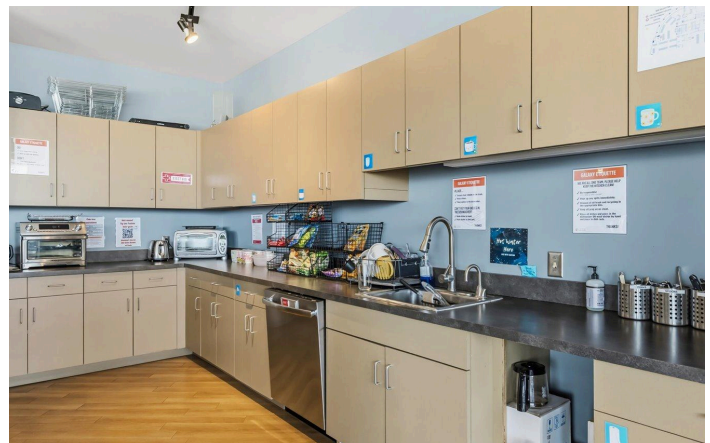
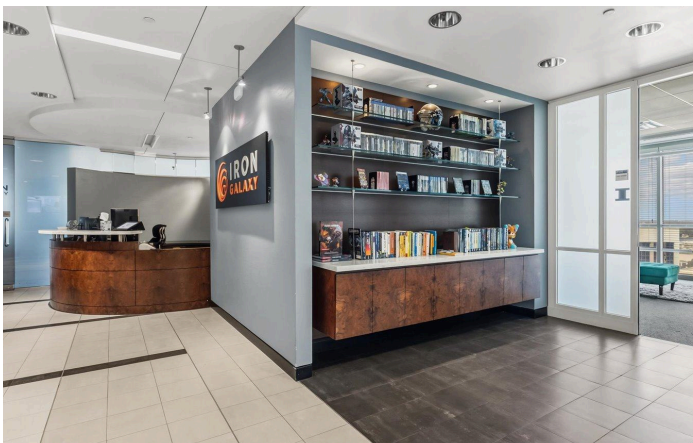
- α Premium Class A finishes with floor-to-ceiling glass
- α Multiple private balconies with skyline views
- α ±19,032 RSF, Efficient central-core layout for flexible demising
- α Modern elevator lobby and secure access
- α Covered parking available onsite
- α Walkable to Amway Center, Kia Center, and downtown dining



Mac Jaffer: 516-554-5775
Tati K: 407-668-8534
leasing@alphaacq.com

189 S Orange Avenue Unit 1900-1970
Orlando, Florida 32801

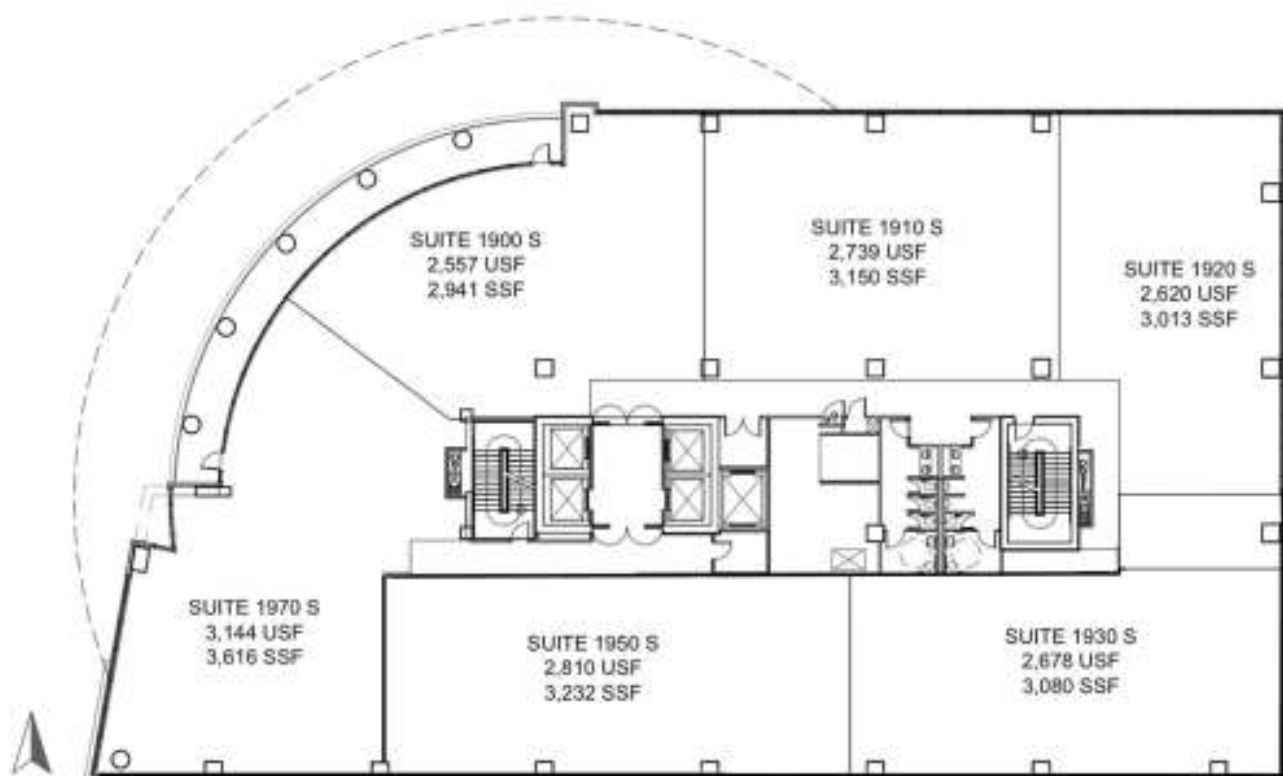
Alpha Equity does not represent or warranty the accuracy of the information contained herein. Such information has been given to Alpha Equity by the owner of the property or obtained from other sources deemed reliable. Alpha Equity has no reason to doubt its accuracy, but does not guarantee it. The reviewers(s) of this document is encouraged to perform their own research for their own purposes to verify the dependability of the information being reviewed. All information should be verified by reviewer(s) prior to purchase or lease. Unless otherwise noted, the property is being offered as-is, where is, with all faults.



Mac Jaffer: 516-554-5775
Tati K: 407-668-8534
leasing@alphaacq.com

189 S Orange Avenue Unit 1900-1970
Orlando, Florida 32801

Alpha Equity does not represent or warranty the accuracy of the information contained herein. Such information has been given to Alpha Equity by the owner of the property or obtained from other sources deemed reliable. Alpha Equity has no reason to doubt its accuracy, but does not guarantee it. The reviewers(s) of this document is encouraged to perform their own research for their own purposes to verify the dependability of the information being reviewed. All information should be verified by reviewer(s) prior to purchase or lease. Unless otherwise noted, the property is being offered as-is, where is, with all faults.



Virtual Tour

<https://my.matterport.com/show/?m=oSeS3DcmyFb>

Mac Jaffer: 516-554-5775
Tati K: 407-668-8534
leasing@alphaacq.com

189 S Orange Avenue Unit 1900-1970
Orlando, Florida 32801

Alpha Equity does not represent or warranty the accuracy of the information contained herein. Such information has been given to Alpha Equity by the owner of the property or obtained from other sources deemed reliable. Alpha Equity has no reason to doubt its accuracy, but does not guarantee it. The reviewers(s) of this document is encouraged to perform their own research for their own purposes to verify the dependability of the information being reviewed. All information should be verified by reviewer(s) prior to purchase or lease. Unless otherwise noted, the property is being offered as-is, where is, with all faults.

**189 S Orange Avenue Unit #1900-1970
Orlando, Florida 32801**



**Alpha Equity Realty & Management
1525 International Parkway,
Unit #4071, Lake Mary FL 32746
www.recfl.com**



**MAC JAFFER
516-554-5775**

**TATI K
407-668-8534**

leasing@alphaacq.com