

OFFICE SPACE FOR LEASE

615 E. Colonial Drive, Orlando, FL 32802

Contact: Wm. Brady McGill, CPM
Executive Vice President

E: Brady@FCPG.com
P: 407.872.0177 ext. 129

For Lease: \$28.50 / RSF, Full Service

Move-In Ready Multilevel Suite Available:

Suite 615: ± 9,360 RSF

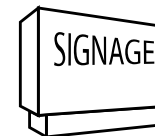
9,360 RSF multilevel suite located directly along East Colonial Drive with high AADT of 48,500, with ± 196 ft frontage

Conveniently situated 5 minutes from the Downtown Orlando Business District with easy access to I-4 & SR 408

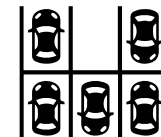
Monument & building signage available along East Colonial Drive

50 shared parking spaces with additional street-side parking

Walking distance to Lazy Moon and Lineage Coffee and close proximity from the Mills & 50 restaurant corridor



**MONUMENT
SIGNAGE
AVAILABLE**



**SHARED
PARKING LOT**



**LARGE CONERENCE
ROOM**



■ 615 E. Colonial Dr., Orlando, FL 32803 ■ Phone: 407.872.0209 ■ www.FCPG.com ■

Information furnished regarding the subject property is believed to be accurate, but no guarantee or representation is made. References to square footage are approximate. This offering is subject to errors, omissions, prior sale or lease or withdrawal without notice. ©2025 First Capital Property Group, Licensed Real Estate Brokers & Managers.

LOCATION

Average Annual Daily Trips

2024

East Colonial Drive	48,500
N Mills Ave	26,500

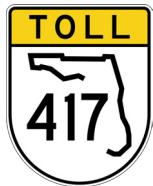
Drive Times & Traffic Counts



2 minutes (0.7 miles)



5 minutes (1.5 miles)



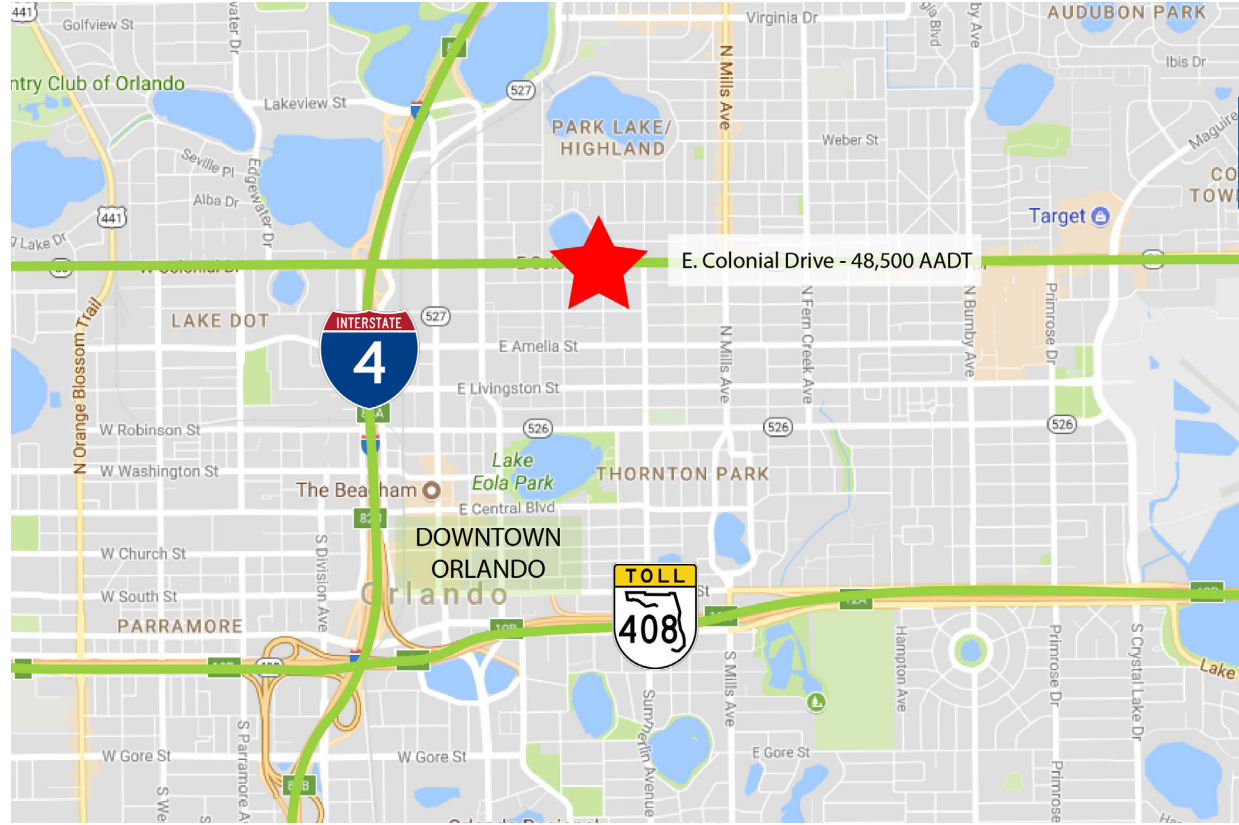
11 minutes (6.6 miles)



13 minutes (11.2 miles)



Less than 1.2 miles



DEMOGRAPHICS

2025

1 Mile

3 Miles

5 Miles



Total Population

20,985

108,727

292,645



Total Households

12,366

52,492

125,330



Average HH Income

\$140,721

\$136,131

\$115,705

615 E. Colonial Dr., Orlando, FL 32803 Phone: 407.872.0209 www.FCPG.com

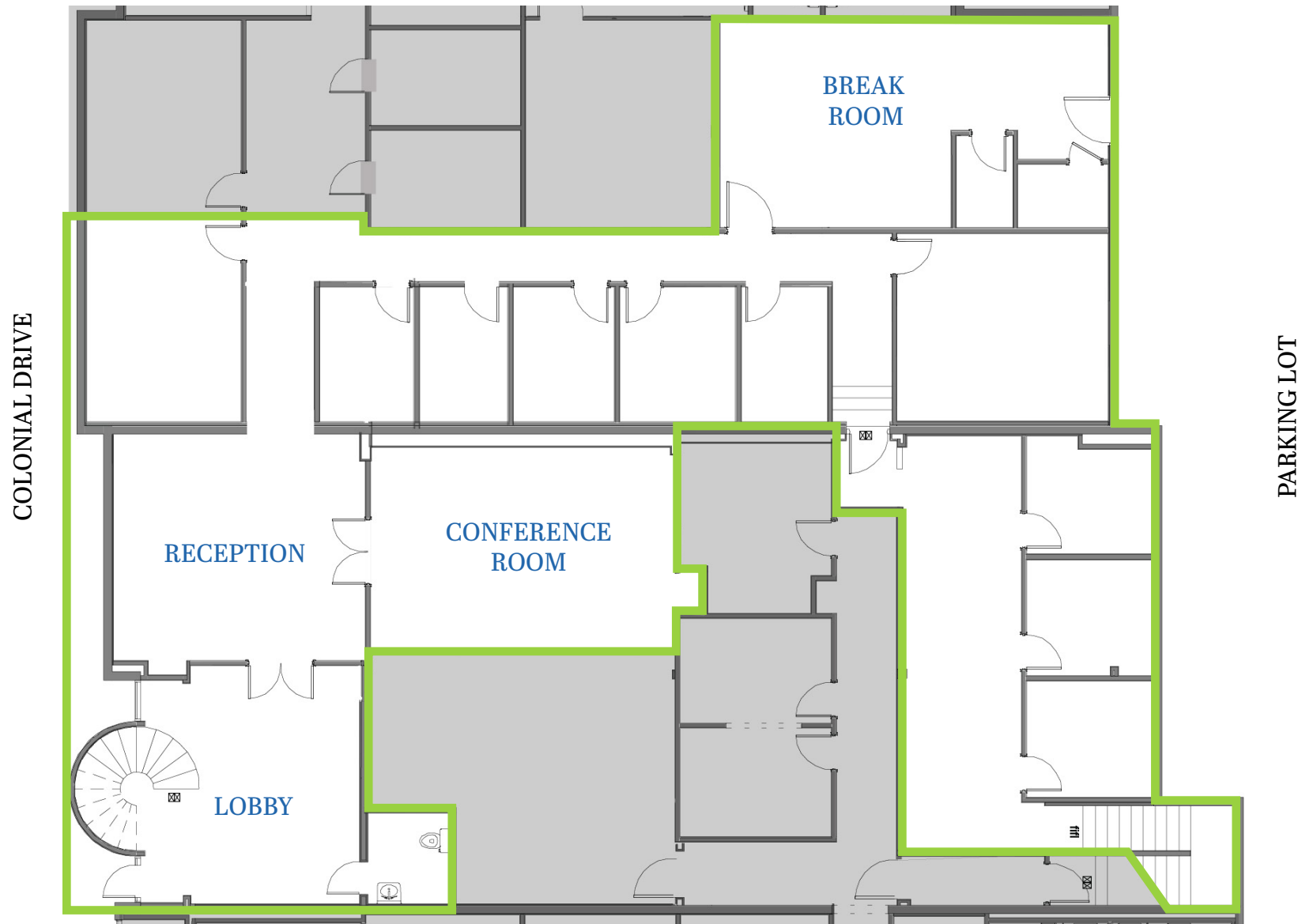
Information furnished regarding the subject property is believed to be accurate, but no guarantee or representation is made. References to square footage are approximate. This offering is subject to errors, omissions, prior sale or lease or withdrawal without notice. ©2025 First Capital Property Group, Licensed Real Estate Brokers & Managers.



FIRST CAPITAL
Property Group

Commercial Real Estate Services

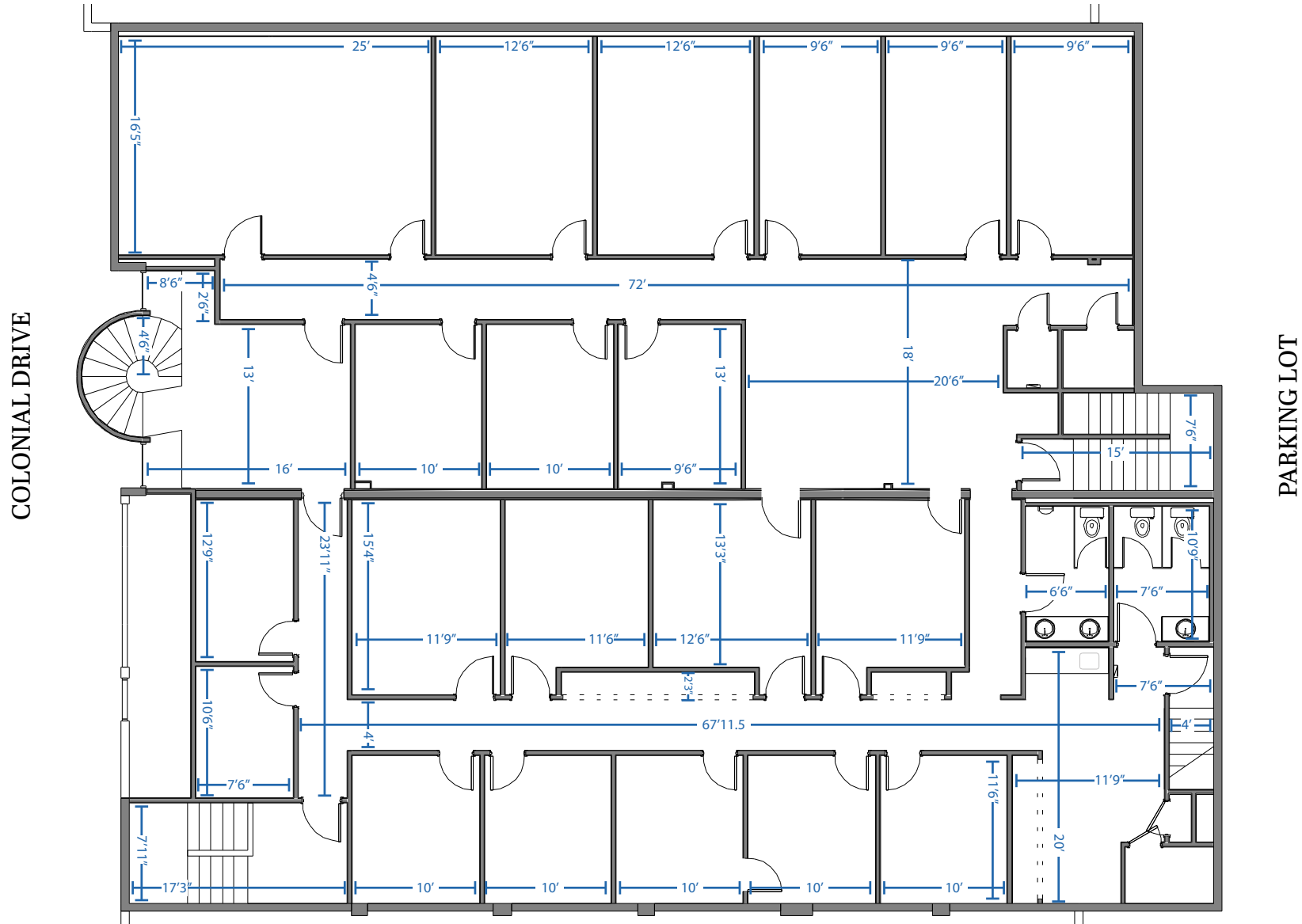
1ST FLOOR FLOORPLAN



■ 615 E. Colonial Dr., Orlando, FL 32803 ■ Phone: 407.872.0209 ■ www.FCPG.com ■

Information furnished regarding the subject property is believed to be accurate, but no guarantee or representation is made. References to square footage are approximate. This offering is subject to errors, omissions, prior sale or lease or withdrawal without notice. ©2025 First Capital Property Group, Licensed Real Estate Brokers & Managers.

2ND FLOOR FLOORPLAN



■ 615 E. Colonial Dr., Orlando, FL 32803 ■ Phone: 407.872.0209 ■ www.FCPG.com ■

Information furnished regarding the subject property is believed to be accurate, but no guarantee or representation is made. References to square footage are approximate. This offering is subject to errors, omissions, prior sale or lease or withdrawal without notice. ©2025 First Capital Property Group, Licensed Real Estate Brokers & Managers.