

ORIOLE LOGISTICS CENTER

16671, 16681, & 16691 ORIOLE ROAD
FORT MYERS, FLORIDA 33912

**WINTER
2025
DELIVERY!**



[Click to View
Property Video](#)



 **LEE &
ASSOCIATES**
COMMERCIAL REAL ESTATE SERVICES

Lee-FL.com
[in](#) [f](#) [t](#) [@](#)

 **Capital Partners**

ORIOLE LOGISTICS CENTER



PROPERTY FACTS - BUILDING 1

Address	16671 Oriole Road, Fort Myers, FL 33912		
Lease Rate	Negotiable	Column Spacing	50' x 50' w/60' Speed Bay (or Dock Bay)
Number of Buildings	One (1)	Building Depth	160'
Remaining Space	136,000 SF	Minimum Size	24,000 SF
Year Built	2025	Sprinkler	ESFR
Clear Height	28'	Zoning	MPD (Mixed-Use Planned Development)

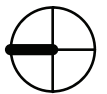
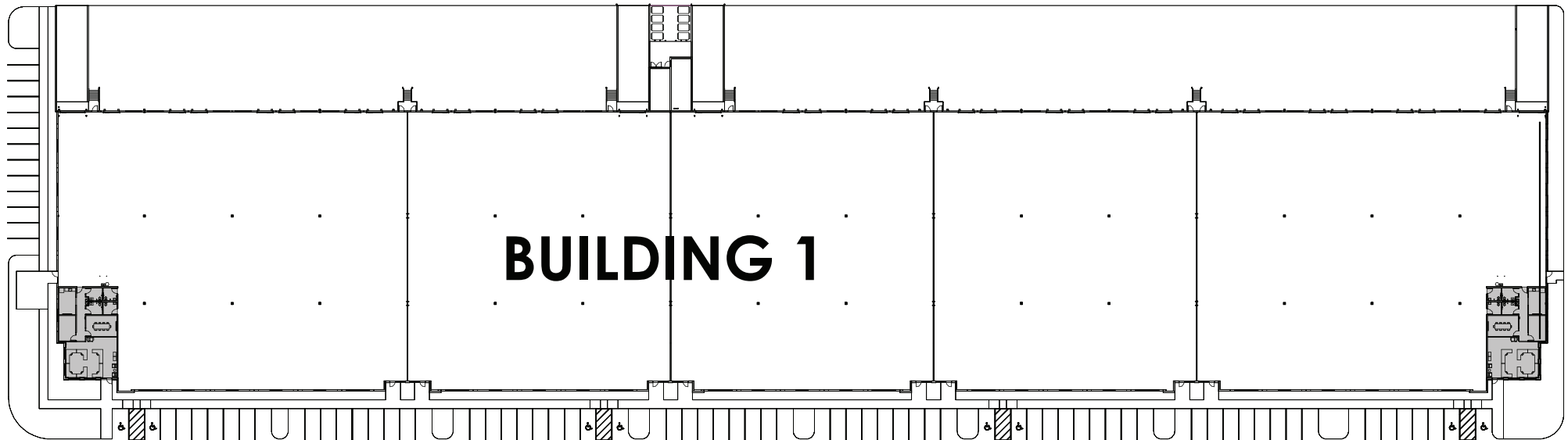
PROPERTY FACTS - BUILDINGS 2 & 3

Address	16681 & 16691 Oriole Road, Fort Myers, FL 33912		
Lease Rate	Negotiable	Column Spacing	50' x 60'
Number of Buildings	Two (2)	Building Depth	180'
Remaining Space	153,000 SF	Minimum Size	27,000 SF
Year Built	2025	Sprinkler	ESFR
Clear Height	32'	Zoning	MPD (Mixed-Use Planned Development)

OVERALL SITE PLAN



Floor Plan
BUILDING 1
16671 Oriole Road



BUILDING 1 SPECIFICATIONS

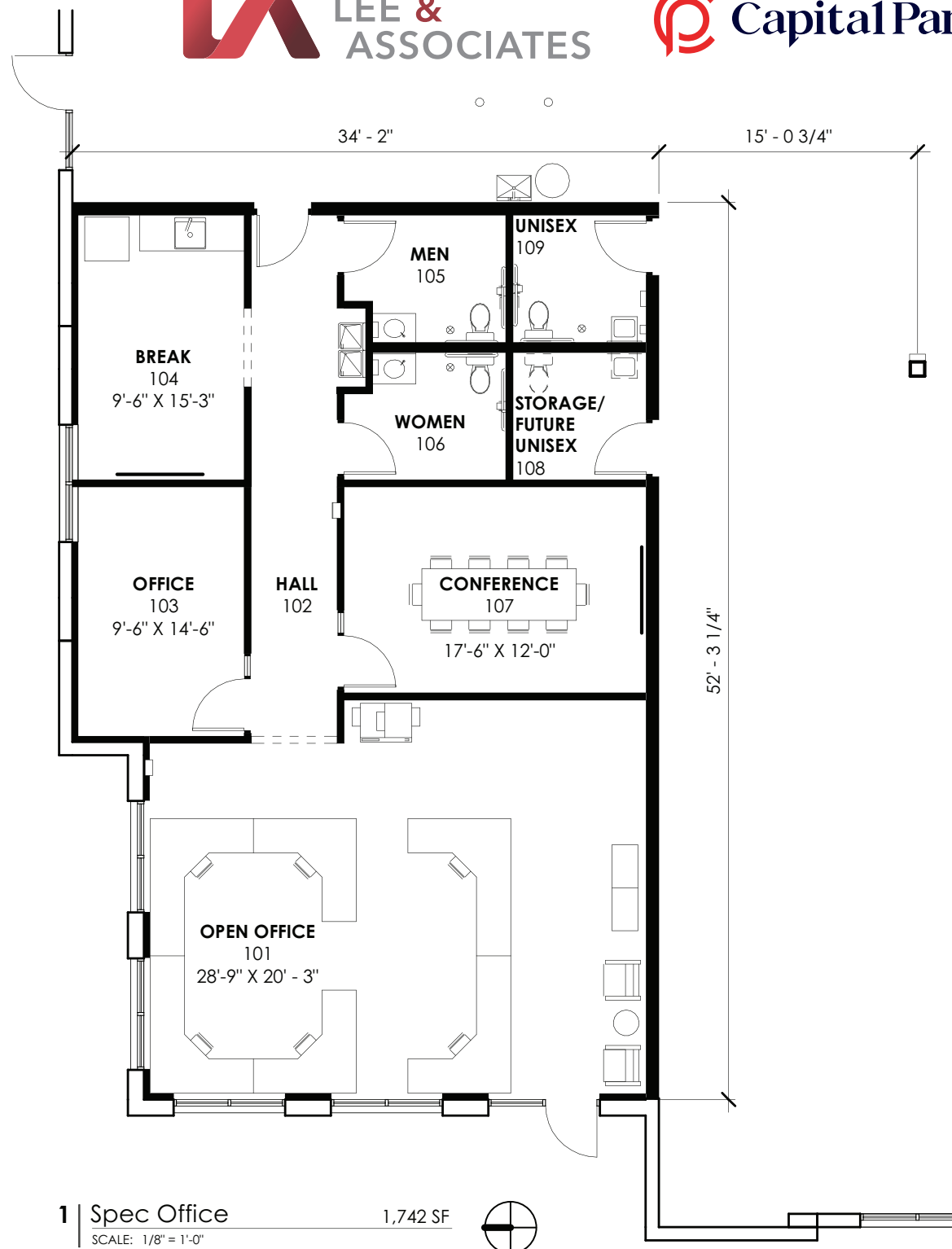
136,000 SF Total
Twenty-Eight (28) Dock Doors
Four (4) Drive-In Doors Via Ramps
28' Clear Height
160' x 850'
176 Parking Spaces

Office Plan
BUILDING 1
16671 Oriole Road



BUILDING 1

Office Detail
1,742 SF

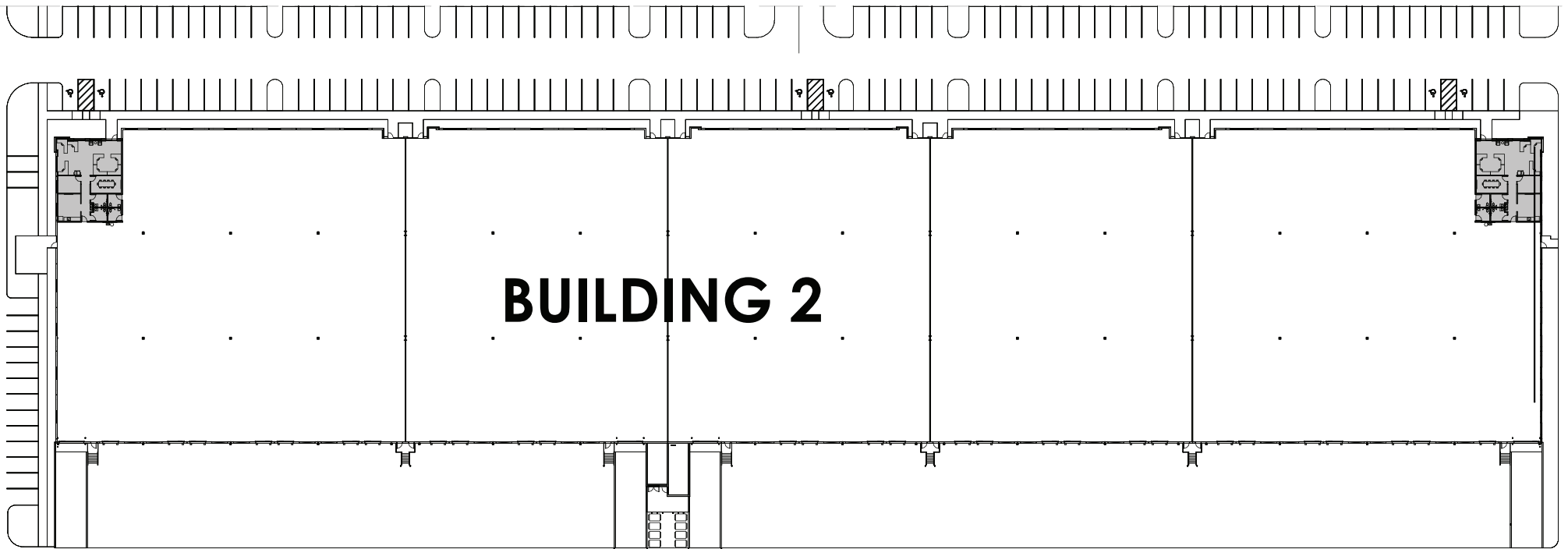


1 | Spec Office

1,742 SF

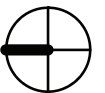
SCALE: 1/8" = 1'-0"

Floor Plan
BUILDING 2
16681 Oriole Road



BUILDING 2 SPECIFICATIONS

153,000 SF Total
Twenty-Eight (28) Dock Doors
Four (4) Drive-In Doors Via Ramps
32' Clear Height
180' x 850'
202 Parking Spaces



Office Plan

BUILDING 2

16681 Oriole Road



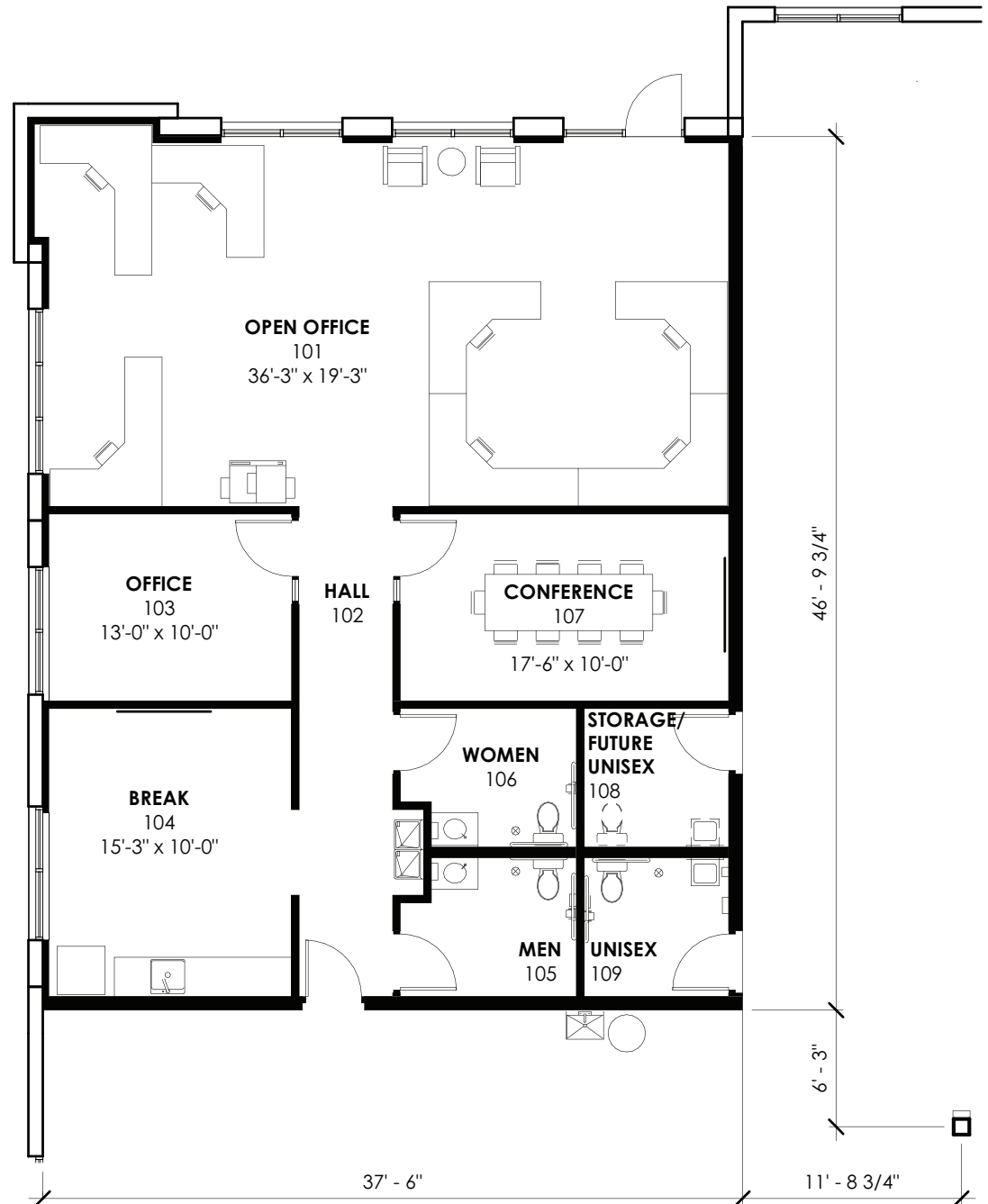
LEE &
ASSOCIATES



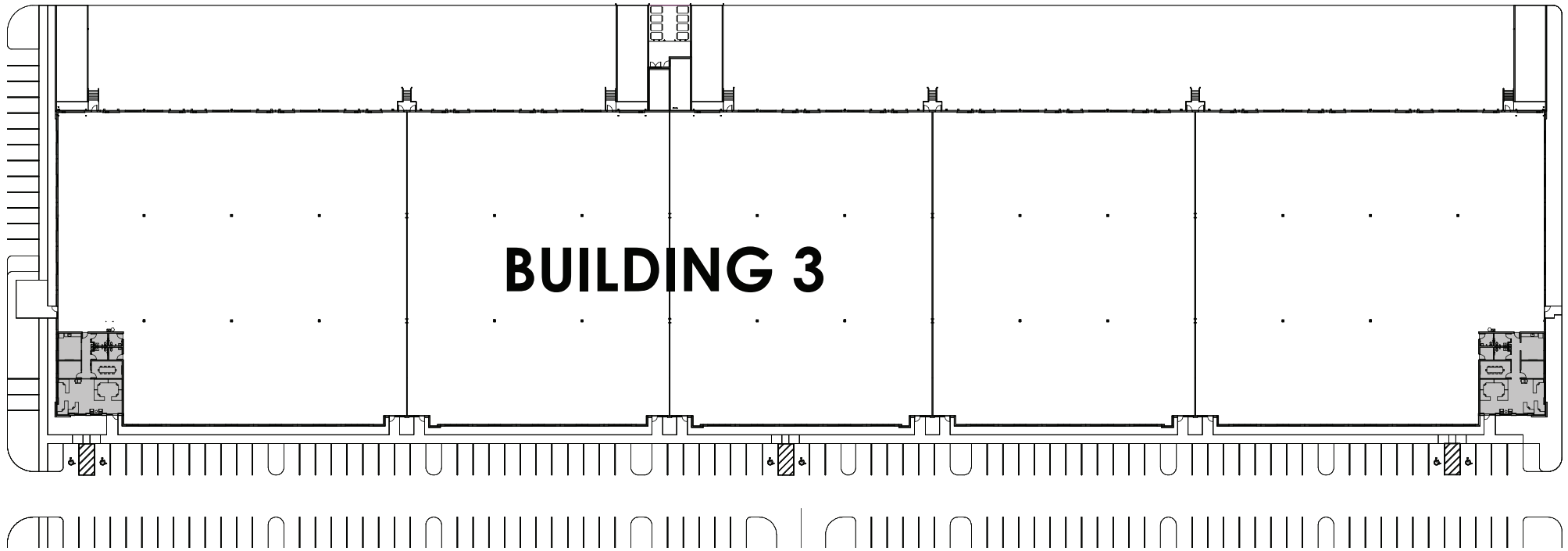
Capital Partners

BUILDING 2

Office Detail
1,810 SF



Floor Plan
BUILDING 3
16691 Oriole Road



BUILDING 3 SPECIFICATIONS

153,000 SF Total
Twenty-Eight (28) Dock Doors
Four (4) Drive-In Doors Via Ramps
32' Clear Height
180' x 850'
202 Parking Spaces

**BUILD-TO-SUIT
OPPORTUNITIES
AVAILABLE!**



Office Plan
BUILDING 3
16691 Oriole Road

BUILDING 3

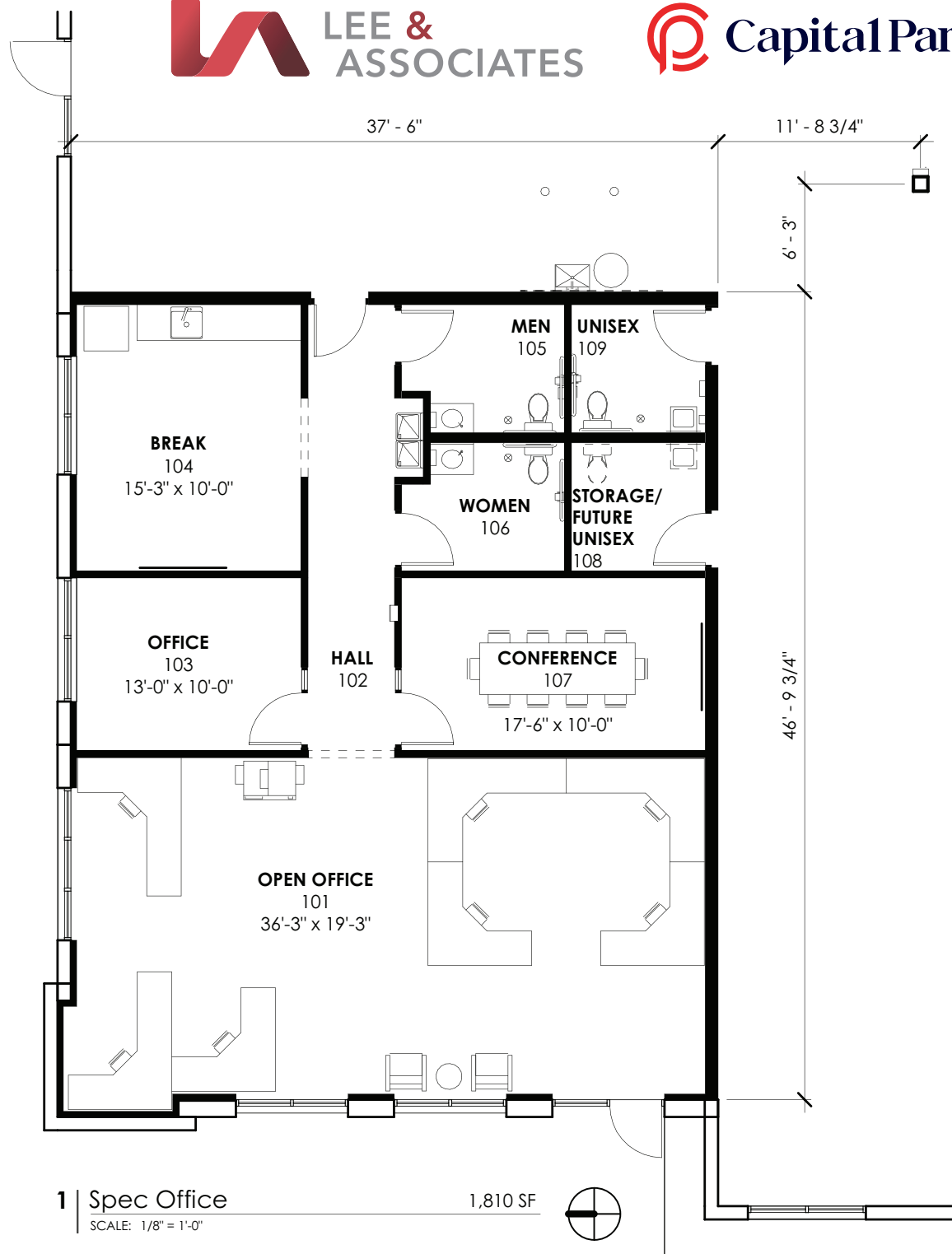
Office Detail
1,810 SF



LEE &
ASSOCIATES



Capital Partners



Current
CONSTRUCTION
Status



As of
November 12, 2025

LOCATION AERIAL



Terminal Access Rd

Treeline Ave

Alico Rd

Three Oaks Pkwy

Oriole Rd

Lee Rd

Domestic Ave

128

75

GULF COAST
TOWN CENTER



PRESENTED BY



COMMERCIAL REAL ESTATE SERVICES



Capital Partners is an industry-leading, Minneapolis-based, commercial real estate developer, investor, and operator. For nearly three decades, Capital Partners has acquired, developed, and managed more than \$1.5 billion of institutional quality industrial property totaling more than 14 million square feet. Capital Partners' investment platform includes ownership of industrial assets, development, asset management, property management services, and full in-house accounting services.



BOB JOHNSTON, SIOR
PRINCIPAL
(239) 210-7601
BJOHNSTON@LEE-ASSOCIATES.COM



JERRY MESSONNIER, SIOR
PRINCIPAL
(239) 210-7610
JMESSONNIER@LEE-ASSOCIATES.COM



FRANK V. MARTONE
VICE PRESIDENT
(239) 210-7605
FMARTONE@LEE-ASSOCIATES.COM

LEE & ASSOCIATES | NAPLES - FT. MYERS

LEE-FL.COM

FORT MYERS, FL 33966



The information and details contained herein have been obtained from third-party sources believed to be reliable, however, Lee & Associates has not independently verified its accuracy. Lee & Associates makes no representations, guarantees, or express or implied warranties of any kind regarding the accuracy or completeness of the information and details provided herein, including but not limited to, the implied warranty of suitability and fitness for a particular purpose. Interested parties should perform their own due diligence regarding the accuracy of the information. The information provided herein, including any sale or lease terms, is being provided subject to errors, omissions, changes of price or conditions, prior sale or lease, and withdrawal without notice. Third-party data sources: CoStar Group, Inc. and Lee Proprietary Data. © Copyright 2019 Lee & Associates all rights reserved.